



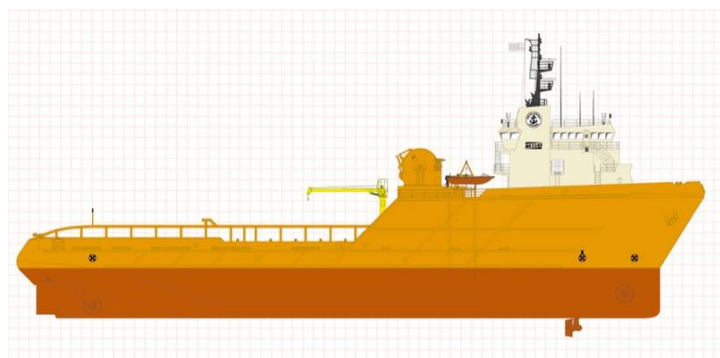
SEABOATS

MARINE BROKERS WITH A GLOBAL APPROACH

AUSTRALIA - BULGARIA - INDIA - INDONESIA - ITALY - MALAYSIA - NEW ZEALAND - PANAMA - PHILIPPINES - SINGAPORE - SPAIN - UK - USA - VENEZUELA - VIETNAM

sales@seaboats.net - www.seaboats.net

276ft AHTSV



Listing ID - 3432

Description 276ft AHTSV

Date 1999

Launched

Length 84.12m (276ft)

Beam 18.29m (60ft)

Draft 8.38m (27ft 6in)

Location USA

Broker John Kearns
john.kearns@seaboatsbrokers.com
+64 21 400 805

Hull: 171

Vessel Type: AHTS - Anchor Handling Supply Vessel

Vessel Class: Tug Supply and Anchor Handling Vessel

Year Built: 1999

Shipyard: North American Shipbuilding

LOA: 84.12m (276ft)

Beam: 18.29m (60ft)

Draft: 8.38m (27ft 6in)

Draft (Normal Operation): 19 ft. (5.79 m)

Draft (Minimum Operation): 15 ft. (4.57 m)

Draft (Loadline): 23 ft. (7.01 m)

Clear Deck: 141 ft. x 50 ft. (43 m x 15.24 m)

Cargo Deck Area: 7,050 sq. ft. (655 sq. m)

Deck Cargo Capacity: 1,350 LT (1,371.66 MT)

Deadweight Tonnage: 4,612 LT (4,686 MT)

CLASSIFICATION

ABS: Star A1 (Unrestricted Ocean Services)

ABS: Star AMS

ABS: Circle E

ABS: DPS-2

USCG: Subchapter L (OSV)

SOLAS

MARPOL

CAPACITIES

Fuel Oil: 406,182 gals. (1,537.57 cu. m)

Ballast: 356,210 gals. (1,348.4 cu. m)

Potable Water: 30,666 gals. (116.08 cu. m)

Dry Bulk: 9,850 cu. ft. @ 80 psi (278.9 cu. m @ 5.5 bars)

Liquid Mud: 5,426 barrels (807 cu. m)

SPECIAL FEATURES

Tuggers; Two (2) x 15 MT

Ship Motion: Two (2) Passive Type Anti-Roll Tanks

Ship Motion: Bilge Keels

Positioning; DP 2

Cranes: Two (2) x 5 Tons @ 30 ft. radius-fixed boom

A-Frame: 350-Ton (equipped to handle)

MACHINERY

Main Engines: Two (2) 3616 CAT Diesels, 15,200 BHP

Propulsion: Two (2) x 4,000 mm dia. C.P. in nozzles

Bow Thrusters: One (1) 1,500 HP Tunnel

Bow Thrusters; One (1) 1,200 HP Drop-Down Azimuthing

Stern Thrusters: One (1) 1,500 HP Tunnel

Generators: Three (3) x 500 kW

Generators: One (1) x 300 kW emergency

TOWING AND ANCHOR HANDLING (DECK EQUIPMENT)

Winches: Brattvaag 4-Drum Waterfall

Tow Drums: Two (2) x 1,800 m of 96 mm wire x 500 MT

Anchor Handling Drums: Two (2) x 1,800 m of 96 mm wire x 500 MT

Tow Pins: Two (2) x 300 MT

Shark Jaws: Two (2) x 700 MT

Stern Rollers: Two (2) 10 ft. x 12 ft.

Chain Lockers: Two (2) x 3 in. or 3.25 in. chain

Storage Reels: Two (2) x 1,600 m of 8 in. dia. synthetic rope

LIFE SAVING EQUIPMENT

Life Rafts: Six (6) x 20-Man Inflatable Life Rafts

Rescue Boat/Craft: One (1) x Rescue Boat

Rescue Basket: One (1) x Rescue Basket

Other gear as required by authorities

ELECTRONICS

LRIT

3x MRU

3x Wind Trackers

2x DGPS Units

VSAT System

AIS Unit

2x Furuno Radars

4x Video Monitors

Raytheon GPS

Furuno Video Sounder

2x Call DSC Controllers

2x Sea VHF Radios

Seator Radio Telex Monitor

JRC Inmarsat-C

Sailor Watch Receiver

Seawatch Watch Receiver

Omnitracs Boat Tracs

Sea SSB (Single Sideband Radio)

JRC Navtex

2x Standard Horizon VHF Radios

3x Gyro Compasses

Magnetic Compass

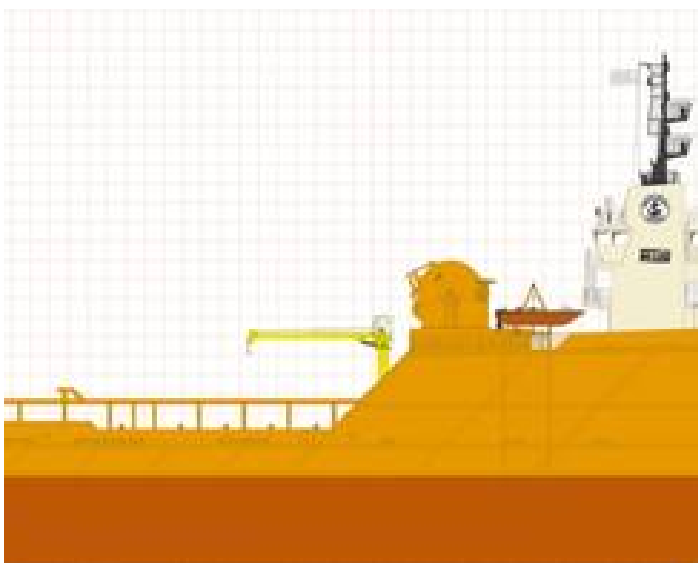
Marine Technologies DP 2 System

Fan Beam

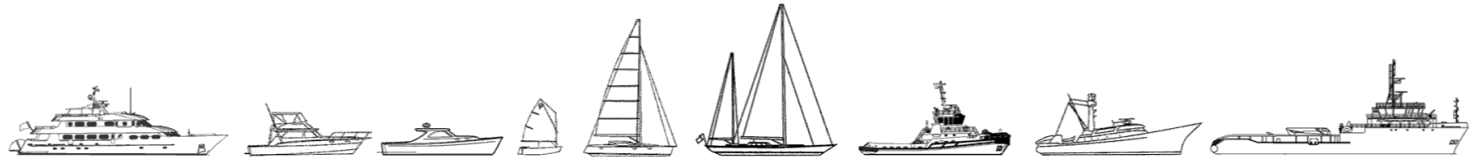
Rada Scan

3x VRU

ACCOMMODATIONS: 41



The details of all vessels are offered in good faith but we cannot guarantee or warrant the accuracy of this information nor warrant the condition of the vessel. Any buyer should instruct their agents, or their surveyors, to investigate such details as the buyer desires validated. This vessel is offered subject to sale, price change, location or withdrawal without notice.



AUSTRALIA - BULGARIA - INDIA - INDONESIA - ITALY - MALAYSIA - NEW ZEALAND - PANAMA - PHILIPPINES - SINGAPORE - SPAIN - UK - USA - VENEZUELA - VIETNAM