



SEABOATS

MARINE BROKERS WITH A GLOBAL APPROACH

AUSTRALIA - BULGARIA - INDIA - INDONESIA - ITALY - MALAYSIA - NEW ZEALAND - PANAMA - PHILIPPINES - SINGAPORE - SPAIN - UK - USA - VENEZUELA - VIETNAM

sales@seaboats.net - www.seaboats.net

29.65m Fisheries Research / Diving / Hydrographic Survey Vessel



Listing ID - 3446

Description	29.65m Fisheries Research / Diving / Hydrographic Survey Vessel
Date Launched	1967
Length	29.65m (97ft)
Beam	7m (22ft 11in)
Draft	3.9m (12ft 9in)
Broker	Richard Pierrepont richard.pierrepont@seaboatsbrokers.com +44 7798 607 323
Price	EUR 250,000

"Princess Madog" is an Original British Government Marine Survey Ship.

Flag: British, MCA Class

Built: Steel, 1967 by Ramsey Ship Building Company, United Kingdom- Converted for ROV operations etc. etc.

GMDSS A1 + A2 - Certified for 12 Passengers and Crew

Newly Painted and has had a minor refit (2021)

Dimensions:

LOA: 29.65m

Width: 7.00m

Draft 3.30M to 3.90m

Tonnage:

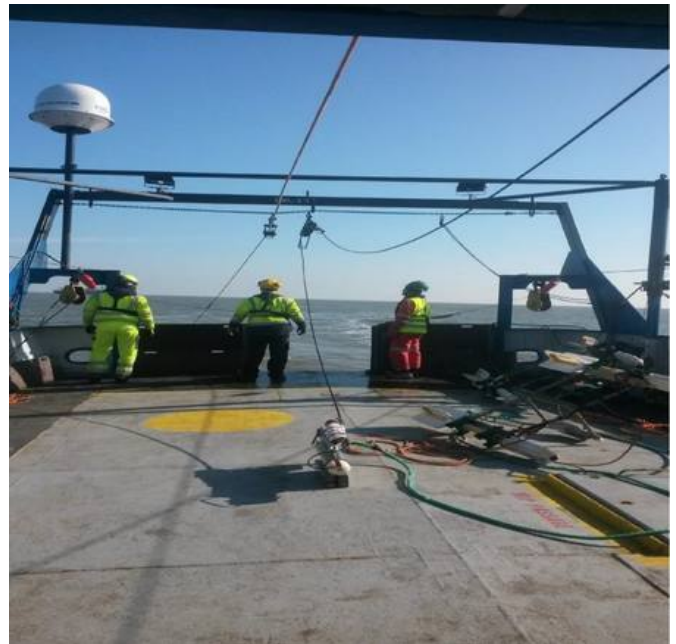
GT: 185

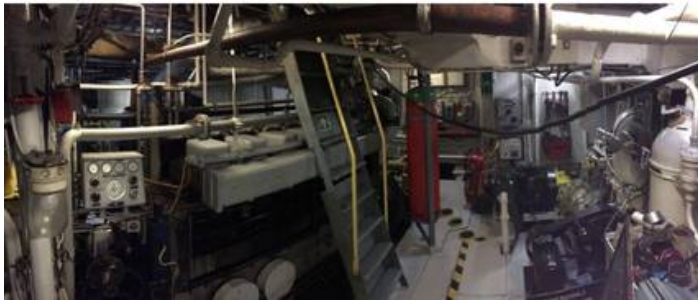
NT: 55

Engine Room: 800 HP LISTER BLACKSTON low speed main engine - 4- Blade Controllable Pitch Propeller.
- 1 x Deutz 200 Amp. auxiliary engine + hydraulic pump 130 l./min. 240 bar
Auxiliary Engine - 1 x Back-Up hydraulic station 70 l./min. 200 bar - 1 x Back-Up hydraulic pump

Other Details

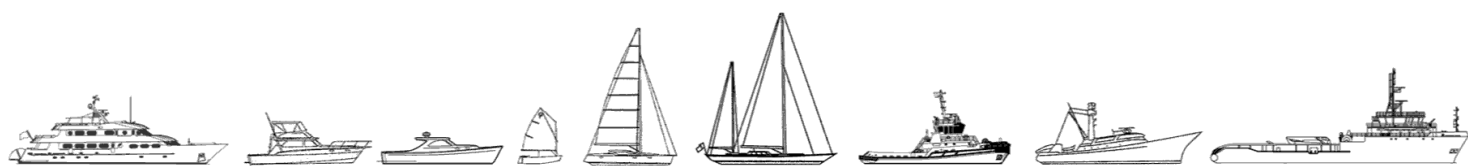
Cargo capacity: 10 cbm Cargo hold
Cruising speed: 10 knots Deck
GPS Positioned Detailed Bottom Survey Facility
2 X 10 Meter Extendable Side Booms
5 X Independent Remotely Operated Towing Winches for Sonar Arrays.
Central Independent Facility for Side Scan Sonar Towing and Recovery Winch.
1 X 10 Ton 14 Metre Reach Crane for Equipment Deployment and Recovery.
Large Open Low Freeboard Aft Work Deck.
Special Diver's Ladder.
Aft Gantry
Fully Equipped main Deck Work Shop.
Airconditioned Surveyors Room with 6 Spacious Work Stations Clear Vision to Aft Deck and Stern Overboard.
Remote Controls to 5 Sonar Winches.
Commercial Grade Catering Facility.
Male And Female Shower/ Toilet Facilities.
Accommodation for 12 Persons and Crew.
Satellite Communication.
4 Point Mooring System.
Bow Truster And Controllable Pitch Propeller.
Extremely Stable In Heavy Weather.
The Vessel can be easily be repurposed for
Pollution Control and Environmental Clean Up Operations.







The details of all vessels are offered in good faith but we cannot guarantee or warrant the accuracy of this information nor warrant the condition of the vessel. Any buyer should instruct their agents, or their surveyors, to investigate such details as the buyer desires validated. This vessel is offered subject to sale, price change, location or withdrawal without notice.



AUSTRALIA - BULGARIA - INDIA - INDONESIA - ITALY - MALAYSIA - NEW ZEALAND - PANAMA - PHILIPPINES - SINGAPORE - SPAIN - UK - USA - VENEZUELA - VIETNAM