



SEABOATS

MARINE BROKERS WITH A GLOBAL APPROACH

AUSTRALIA - BULGARIA - INDIA - INDONESIA - ITALY - MALAYSIA - NEW ZEALAND - PANAMA - PHILIPPINES - SINGAPORE - SPAIN - UK - USA - VENEZUELA - VIETNAM

sales@seaboats.net - www.seaboats.net

28.8m Harbour / Coastal Tug



Listing ID - 3627

Description 28.8m Harbour / Coastal Tug

Date 1984

Launched

Length 28.8m (94ft 5in)

Beam 9m (29ft 6in)

Draft 5.45m (17ft 10in)

Note 29T Bollard Pull

Location New Plymouth, New Zealand

Broker John Kearns
john.kearns@seaboatsbrokers.com
+64 21 400 805

Description

Vessel Type: Harbour / Coastal Tug, Lloyds +100A1 Tug

Builder: Sims Engineering, Dunedin New Zealand

Year Built: 1984

LOA: 28.8m

Beam: 9m

Draft: 5.45m

GRT: 283T

Displacement (Departure): 480T

Deadweight: 95T

Performance

Bollard Pull: 29Tonnes

Sea Speed: 10kts

Tank Capacities

Fuel Capacity: 56,430 litres

Fresh Water Capacity: 29,200 litres

Fire Fighting Foam – AFFF: 14,000 litres

Waste Oil And Bilge Water: 2200 litres

Machinery

Main Engines: 2 x Cat 3512 860kW at 1600rpm

Propellers: 2 x Liaaen (Rolls Royce) Azimuthing Controllable Pitch Thrusters

Generators: 2 x Cat 3306 50HZ @ 1500 RPM, 3 Phase, 138kva, 110kw

General Service Pumps: 2 x Desmi 80-70-175 30-80m³/hr

Sewage Treatment: Hamworthy STO 10person

Oily Water Separation: Comyn 0.25m³/hr

Engine room Fire Protection: FM200

Deck Equipment

Towing Winch: Sims Hydraulic 55T Brake holding, @bare drum , Freewheel capable.

15T haul, 75m/min line speed

Aft Tugger Winch: Sims Hydraulic 2T

Towing Arrangement

HARBOUR: 180m x 88mm SSR1200 Main Line. 15m x 41mm Amsteel Blue Pennant

Windlass: Sims Hydraulic 3T single Gypsy, Wire Drum , Drum End

Anchor/Cable: 2 x Hall Pattern 480kg / 1 x 19U2 x 11shackle Stbd, 28mm wire Port

Towing Hook: 30T capacity with remote quick release

Staple: Fixed with Stainless/steel lining

Deck Crane: Unic A500 - 1000kg @2m, rigged with wire winch

Fire Fighting

Total Capacity: 22,000litres/min

Pumps: 2 x Mather & Platt - 630m³/hr - Main Engine Driven

Monitors: 2 x Manual Operated, 1 x Hydraulic remote operated

Foam Induction: In Line proportioners - 6%

Navigation and Communication

1 x Furuno RDP-149 NavNet VX2 combined Radar/Plotter

1 x Standard Horizon Eclipse DSC VHF Transceiver

1 x Motorola DM4601e VHF Transceiver

1 x Furuno GP-32 GPS/WAAS Receiver

1 x Simrad Weather Station

1 x Furuno Navigator AIS Transponder

1 x Wagner MK4 Autopilot

1 x Wagner Course Alarm Unit

1 x Sontec Surecom Series II Intercom

1 x Autronica Fire Monitoring System

1 x Monitoring & Control Alarm Panel

1 x Saura Keiki Seisakusho 150mm Magnetic Compass

Accommodation/LSA Equipment

General: LSA and Certificate for 9 Persons

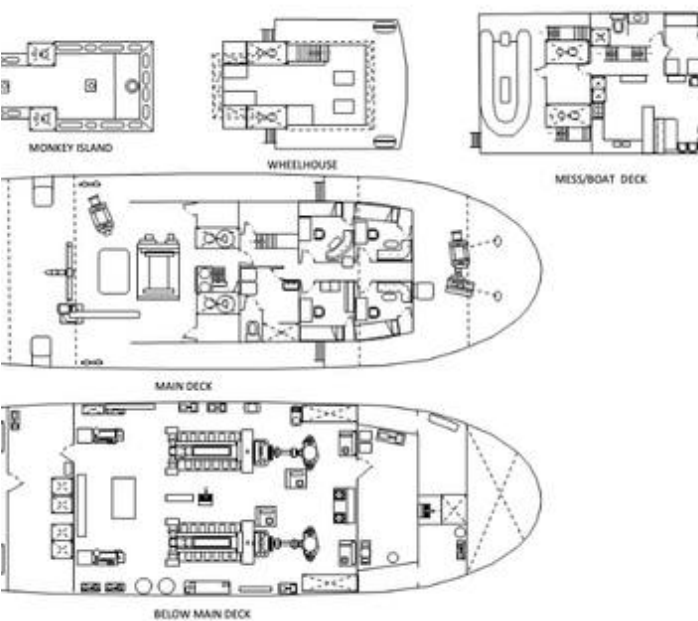
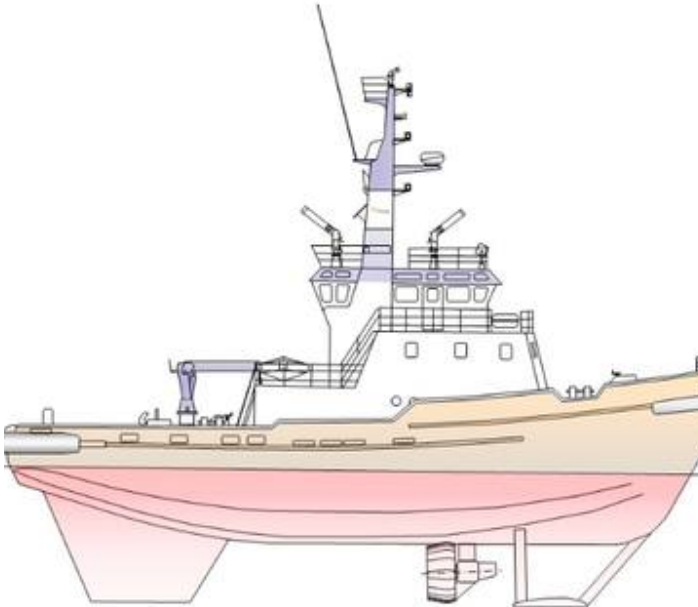
Cabins: 4 X 2 Berth, 1 x 1 berth - Air Conditioned

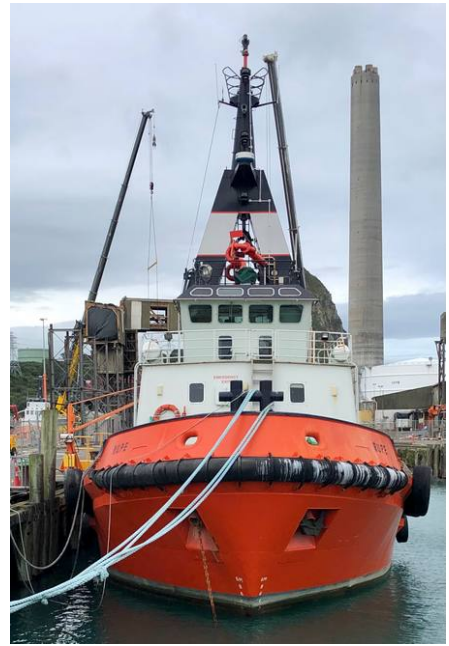
Liferafts: 2 x RFD 10 man SOLAS B

Workboat

Hull/Motor: NAIAD Aluminium Rigid hull Inflatable/30hp Outboard



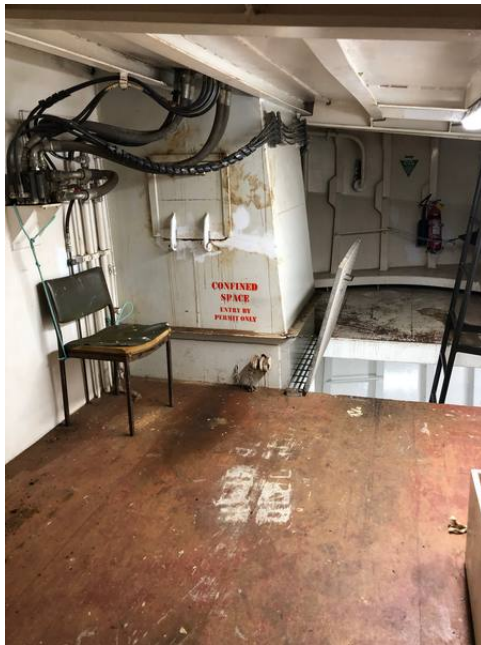












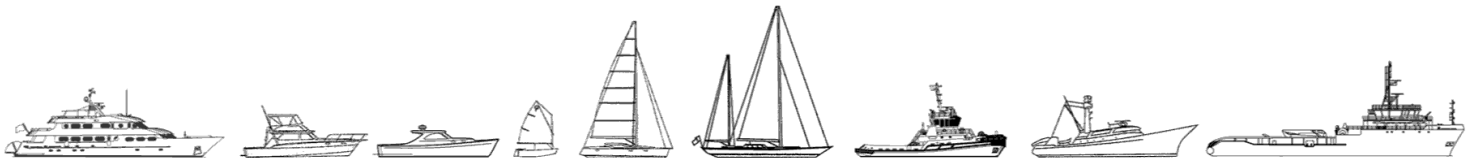








The details of all vessels are offered in good faith but we cannot guarantee or warrant the accuracy of this information nor warrant the condition of the vessel. Any buyer should instruct their agents, or their surveyors, to investigate such details as the buyer desires validated. This vessel is offered subject to sale, price change, location or withdrawal without notice.



AUSTRALIA - BULGARIA - INDIA - INDONESIA - ITALY - MALAYSIA - NEW ZEALAND - PANAMA - PHILIPPINES - SINGAPORE - SPAIN - UK - USA - VENEZUELA - VIETNAM