



SEABOATS

MARINE BROKERS WITH A GLOBAL APPROACH

AUSTRALIA - BULGARIA - INDIA - INDONESIA - ITALY - MALAYSIA - NEW ZEALAND - PANAMA - PHILIPPINES - SINGAPORE - SPAIN - UK - USA - VENEZUELA - VIETNAM

sales@seaboats.net - www.seaboats.net

NEW BUILD - 27.29m Superyacht L88



Listing ID - 3649

Description NEW BUILD - 27.29m Superyacht L88

Date Launched Built to Order

Length 27.29m (89ft 53in)

Beam 6.60 m (6.90 m) / 21ft 65in (22ft 64in)

Draft 1.80 m (5ft 90in)

Location Thailand

Broker Clive Bennett
clive.bennett@seaboatsbrokers.com
+64 27 494 9799

Price POA

Philosophy

Ladenstein Yacht is founded on the simple principle to go the extra mile for each client. It always starts with listening to the ideas of the clients and to take them with us by every process in order to create something extraordinary.

By doing this, we are able to give each Ladenstein Yacht an own fingerprint and each client a unique home on the sea.

Ladenstein

Many owners have a clear vision if they start dreaming of their own yacht but when the process starts they have to settle for less because many shipyards are only designed for mass-production.

We, as shipyard believe it is not the right way to diminish your vision - we want to embrace it, by listening to your ideas and taking the time to build the ship after your conceptions. Whatever preference you have, we try to adapt to them.

Depending on your wish, you can work together with our in-house designer or choose your preferred designer.

The 88

With our new 88, we want to offer our clients more! Compare to other yachts the Ladenstein 88 provides one of the largest flying bridges with 63 sqm that can ideally be used for cocktails parties or for relaxing sunbaths time with the family.

More Privacy

The contemporary design of the new Ladenstein 88 offers more than 75 sqm of public and private space on Main Deck thanks to the 2 ½ deck arrangement.

Sun Deck

63sqm full of entertainment

With the 88, Ladenstein offers one of the biggest Sun Deck in this class. The spacious layout provides ample spaces for steering, relaxing, and dining. A fully equipped Teppanyaki bar, a generous Alfresco dining table, Jacuzzi and a big exterior glass shower dome.

Panorama Cockpit

Multipurpose on 21sqm

Big Alfresco dining table, a versatile sofa for dining and sunbathing and perfectly integrated mooring & storage solutions are setting new standards. The freestanding sunbathing sofa and the unique glass veranda creates lightness and generosity. Cockpit and the Beach Club are merging into one big relaxing area to enjoy family and friends.

Beach Club

21 sqm bath platform

The Beach Club with his large sea level terraces offers a three-way sea access for relaxing, swimming and easy tender docking. The versatile Beach Club can accommodate 1 Jet tender (approx. 409cm) & 1 Jet Ski approx. 331cm.

Combined with the 21 sqm multipurpose cockpit it creates a beautiful space well suited for relaxing, sport and entertainment.

Foredeck

With different kinds of entertainment possibilities and the best view of the sea, the foredeck counts to the favorite places on the yacht. Enjoy the beauty of the ocean while sitting next to the glass balcony, or find your inner balance on our yoga spot in the middle of the foredeck.

With one movement, the spot will be transformed into a sports area, such as playing golf or using the integrated treadmill. A multifunctional place perfect for doing the things you love!

The steering seats can be set either in Steering mode or Living mode. In Steering mode, floor and steering seats can be elevated and together with the wing stations it helps to manoeuvre the yacht safely in the sea and into the harbor

Main Characteristics

Model: Ladenstein 88

Builder: Ladenstein Yachts Co., Ltd.

Exterior Styling & Concept: Ing. Markus Ladenstein

Interior Designer: Ing. Markus Ladenstein

Length o. a.: 27.29 m (89ft 53in)
Beam o. a.: 6.60 m (6.90 m) / 21ft 65in (22ft 64in)
Draft: 1.80 m (5ft 90in)

Displacement Lightship: 69.00 t (152,120 lbs)

Construction: GRP

Fuel Tank 10,000 l + 2,000 l (Long Range) / 2,642 Us Gallon + 528 Us Gallon (Long Range)

Fresh Water Tank: 2,000 l (528 Us Gallon)

Black Water Tank: 600 l (158 Us Gallon)

Accommodation

Owner & Guests Accommodation: 8 Persons in 4 Cabins

Crew Accommodation: 1 Captain and 2 Crew in 2 Cabins and 2 Bathrooms

Main Machinery and Performance

Main Engines: 2 x MAN V8 – 1300 Hp / 2 x MAN V12 – 1800 Hp / 2 x MAN V12 – 2000 Hp

Max. Speed: 18 kts / 26 kts / 29 kts

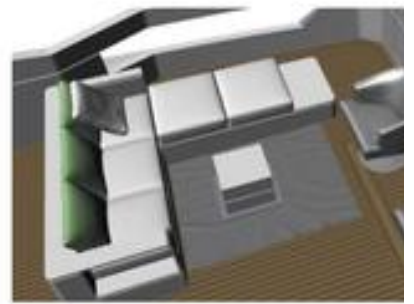
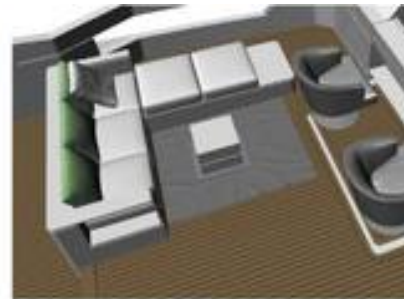
Cruising Speed 15 kts / 23 kts / 26 kts

Long Range Cruise @ 10 Kts: up to 1,600 Nm

Generator Standard: 2 x Genset 27 KW







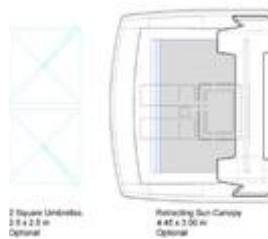
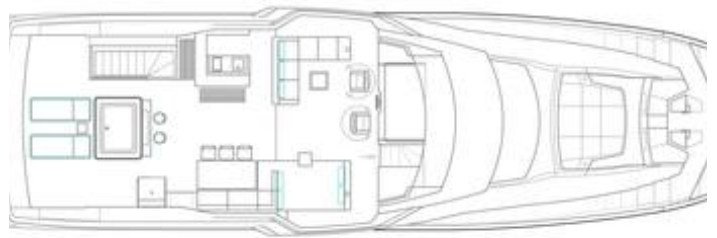




CLASSIC



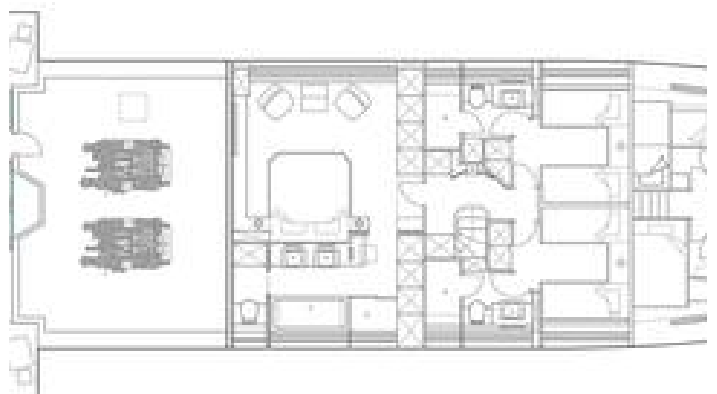
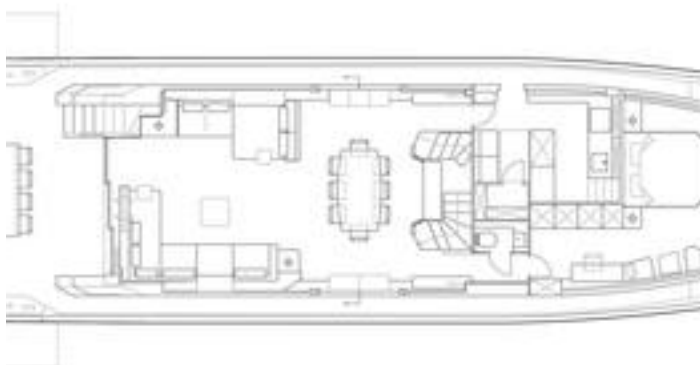
G BRIDGE



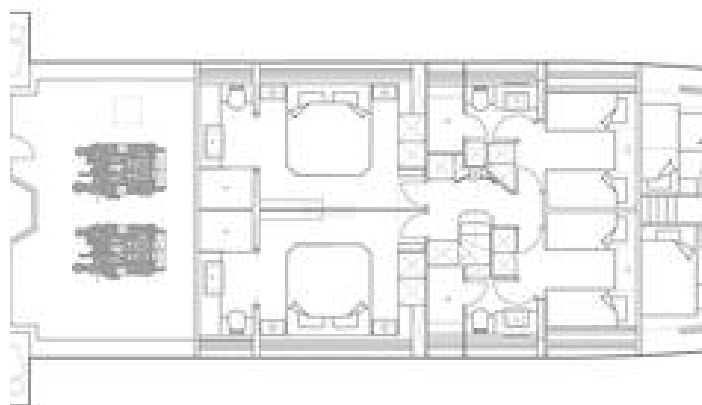
2 Square Umbrellas
2.0 x 2.0 m
Optional

Retracting Sun Canopy
4.45 x 3.50 m
Optional

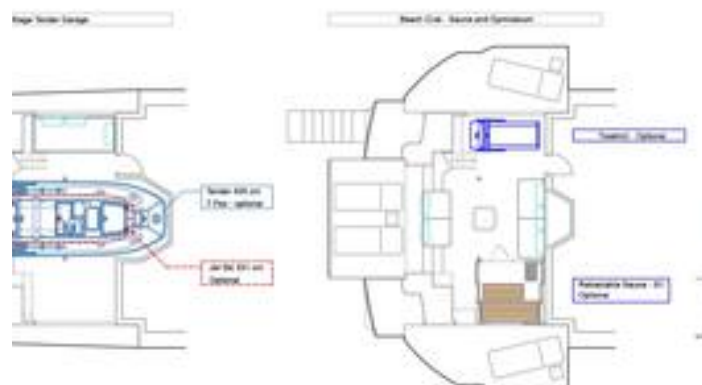
W 4 CABINS



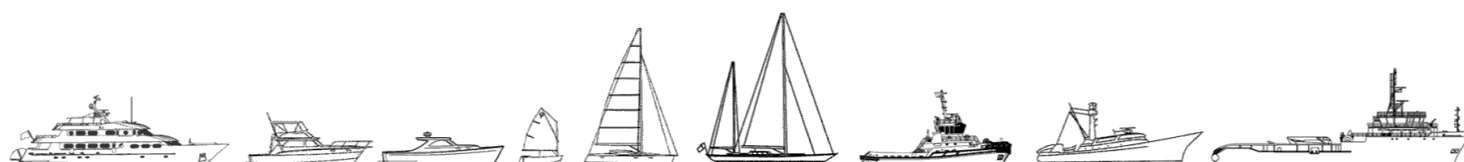
K 5 CABINS



DECK TENDER GARAGE



The details of all vessels are offered in good faith but we cannot guarantee or warrant the accuracy of this information nor warrant the condition of the vessel. Any buyer should instruct their agents, or their surveyors, to investigate such details as the buyer desires validated. This vessel is offered subject to sale, price change, location or withdrawal without notice.



AUSTRALIA - BULGARIA - INDIA - INDONESIA - ITALY - MALAYSIA - NEW ZEALAND - PANAMA - PHILIPPINES - SINGAPORE - SPAIN - UK - USA - VENEZUELA - VIETNAM