



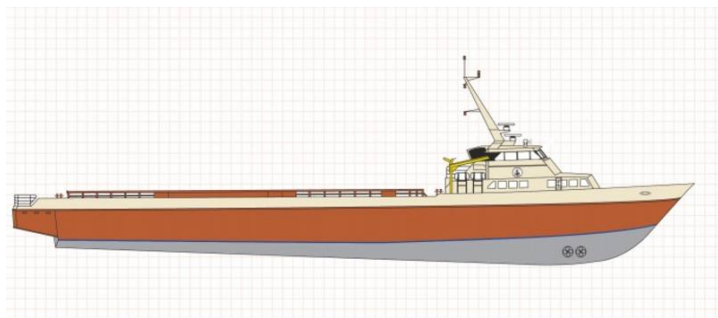
SEABOATS

MARINE BROKERS WITH A GLOBAL APPROACH

AUSTRALIA - BULGARIA - INDIA - INDONESIA - ITALY - MALAYSIA - NEW ZEALAND - PANAMA - PHILIPPINES - SINGAPORE - SPAIN - UK - USA - VENEZUELA - VIETNAM

sales@seaboats.net - www.seaboats.net

190ft Fast Supply Vessel



Listing ID - 3673

Description	190ft Fast Supply Vessel
Date Launched	2013
Length	59.13m (190ft)
Beam	9.14m (30ft)
Draft	4.27m (14ft)
Location	USA
Broker	John Kearns john.kearns@seaboatsbrokers.com +64 21 400 805
Price	POA

Registration

Hull: 1324

Type: Fast Supply

Shipyard: Breaux Brothers Enterprises

Dimensions

Dimensions: 190 ft. x 30 ft. x 14 ft. (59.13m x 9.14 m x 4.27 m)

Clear Deck: 132 ft. x 24ft. 6 in. (40.23m x 7.62m)

Clear Deck Area: 3, 234 sq. ft. (40.23m x 7.62m)

Deck Cargo Capacity: 380 LT (386.10 MT)

Deadweight Tonnage: 450 LT (457.22 MT)

Capacities

Fuel Oil: 34, 000 gals. (128.7 m3)

Ballast: 62, 000 gals. (234.7 m³)
Potable Water: 900 gals. (3.41 m³)
Lube Oil: 350 gal. (1.32 m³)

Machinery

Main Engines: Four (4) 3512C-HD CAT Diesels, 7, 240 BHP
Auxiliary Engine: One (1) CAT C9, 503 BHP
Bow Thrusters: Two (2) 200 HP Thrustmaster 3077200 AL tunnels
Speed: 28 knots
Generators: Two (2) x 80 kW

Special Features

Positioning: DP 2
Steering and Controls: Four (4) IMS 5 HP Electro / Hydraulic
Steering and Controls: Steering units, three (3) stations
Firefighting: 2 monitors @ 6, 000 GPM each

Life Saving Equipment

Life Rafts: Four (4) x 25-Man inflatable life rafts
Personal rescue davit
Other gear as required by authorities

Electronics

Electronics Package: Two (2) Furuno FAR-2117 Radars, Furuno GP150D DGPS Navigator, Furuno FA150 AIS Transponder, Furuno FM-8800S VHF Radiotelephone, SEA 235 SSB Radio, Icom IC-M504 VHF Radio, Depth Recorder, Furuno NX700P Navtex Receiver, Color Video Sounder, RLB-32 EPIRB, Furuno LH3000 Loud Hailer, Two (2) Furuno GC10 Gyro Converters, Marine Technologies DP 2 Integrated Vessel Control System

Classification

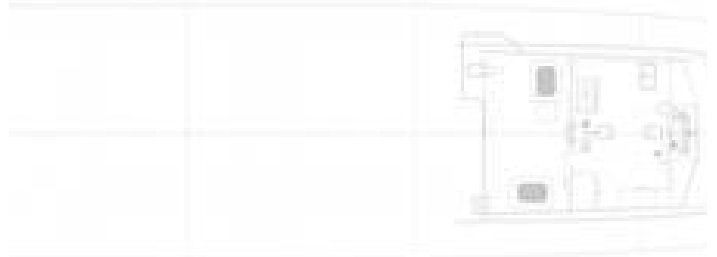
ABS: A1 class
ABS: Loadline
ABS: AMS (HSC Crewboat)
ABS: DP-2
ABS: FiFi
USCG

Accommodations

Accommodations: 12
Passengers: 53



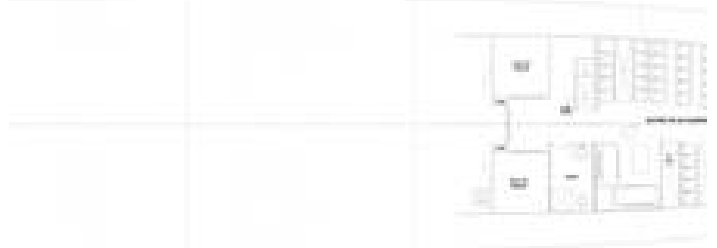
Main Deck



Upper Deck and Main Deck

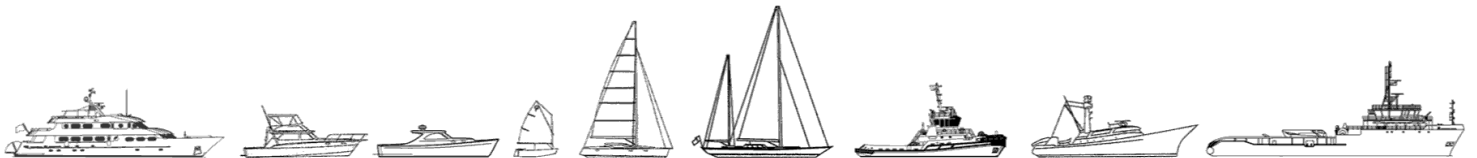


Lower Deck



Engine Room

The details of all vessels are offered in good faith but we cannot guarantee or warrant the accuracy of this information nor warrant the condition of the vessel. Any buyer should instruct their agents, or their surveyors, to investigate such details as the buyer desires validated. This vessel is offered subject to sale, price change, location or withdrawal without notice.



AUSTRALIA - BULGARIA - INDIA - INDONESIA - ITALY - MALAYSIA - NEW ZEALAND - PANAMA - PHILIPPINES - SINGAPORE - SPAIN - UK - USA - VENEZUELA - VIETNAM