



SEABOATS

MARINE BROKERS WITH A GLOBAL APPROACH

AUSTRALIA - BULGARIA - INDIA - INDONESIA - ITALY - MALAYSIA - NEW ZEALAND - PANAMA - PHILIPPINES - SINGAPORE - SPAIN - UK - USA - VENEZUELA - VIETNAM

sales@seaboats.net - www.seaboats.net

101.5m RoRo Cargo Vessel



Listing ID - 3685

Description	101.5m RoRo Cargo Vessel
Date Launched	1980
Length	101.50m (333ft)
Beam	16.56m (54ft 3in)
Draft	6.10m (20ft)
Note	Deutz Engine
Location	Mediterranean
Broker	Franklin Taylor franklin.taylor@seaboatsbrokers.com +64 27 276 5383
Price	USD 3 Million

Type of Ship: RoRo Cargo

Flag: Panama

Port of Register: Panama

LOA: 101.50m

LBP: 90m

Summer Draft: 6.10m

Breadth: 16.56m

Depth: 11m

Lightship: 2195 t

Average Speed: 14 knots

Net Tonnage: 1425 t

Deadweight: 3734

Main Engine: Barreras - Deutz RBV 12m 540 5700HP

GMDSS Area: A1+A2+A3

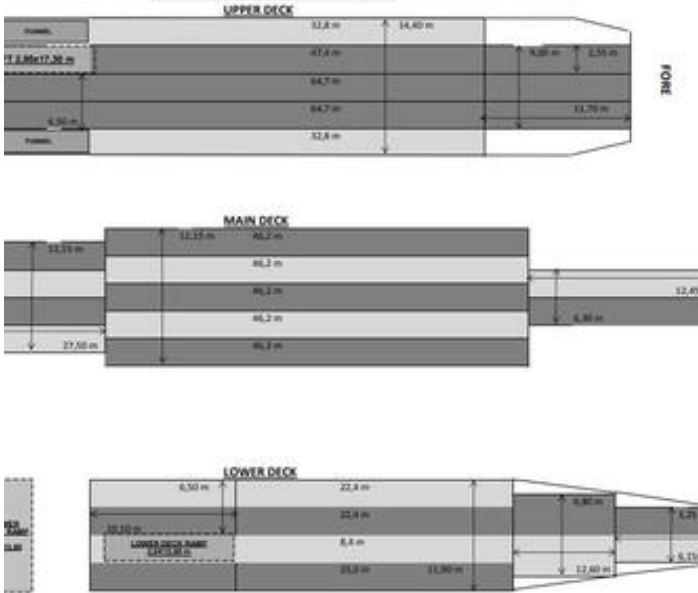
Combustible Main Engine: 8.5 MT IFO 24 H

Combustible Generator in Port/At Anchor: 1200LT D/O 24 H

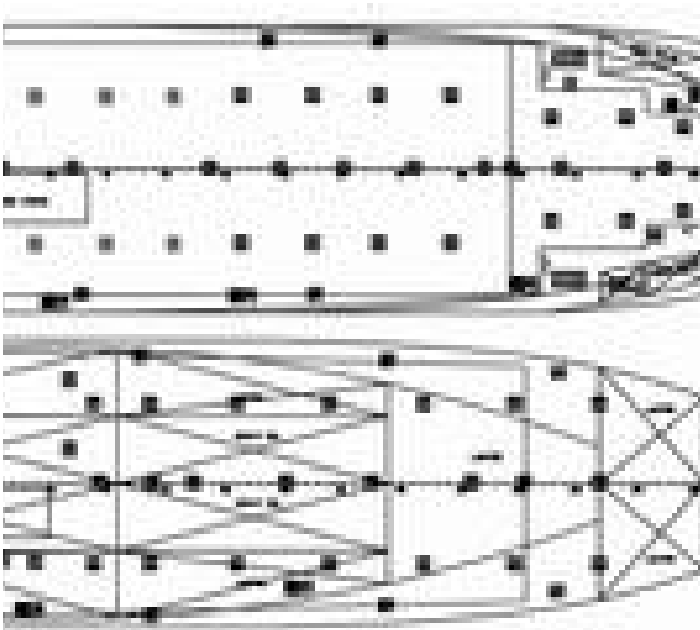
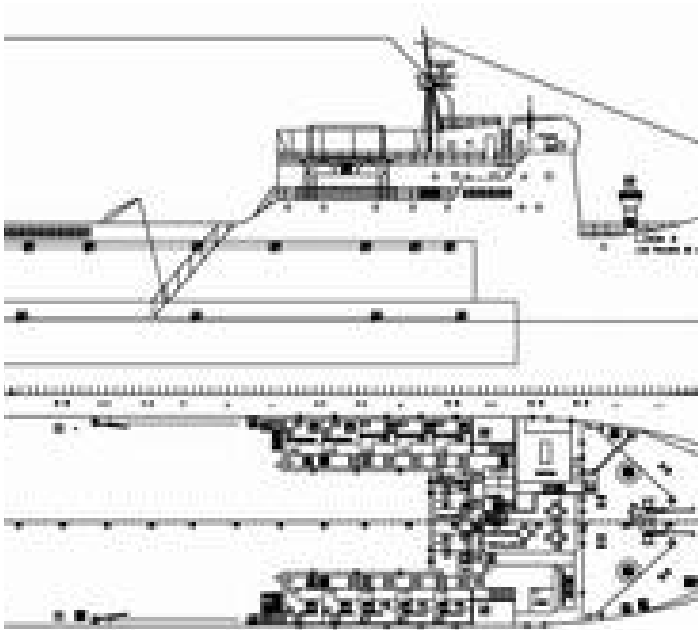
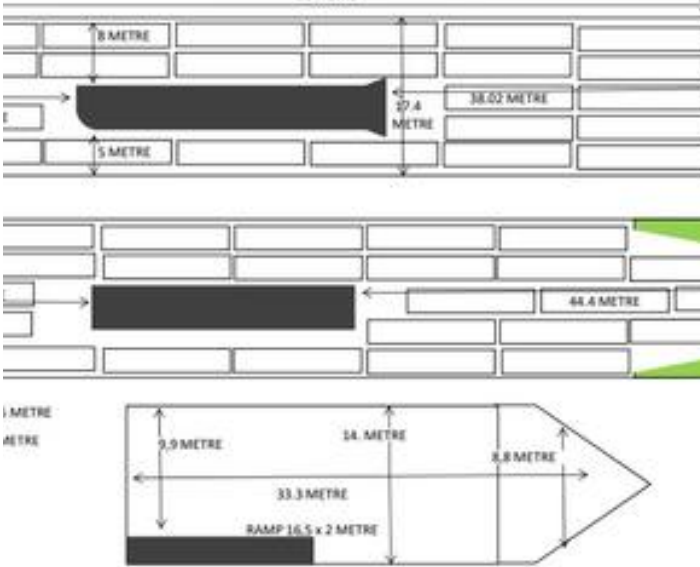




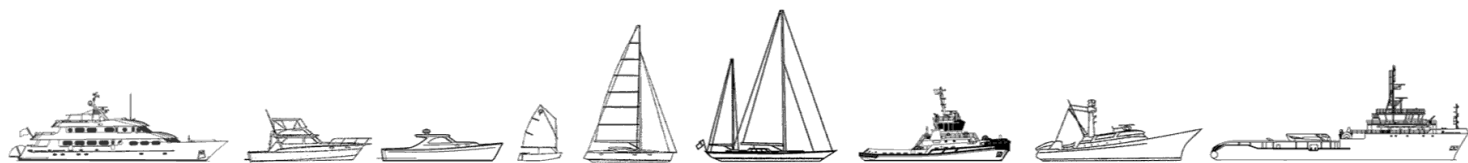
M/V LION A LINEMETER



MV TIGER A CARGO LOADING PLAN
90 METRE



The details of all vessels are offered in good faith but we cannot guarantee or warrant the accuracy of this information nor warrant the condition of the vessel. Any buyer should instruct their agents, or their surveyors, to investigate such details as the buyer desires validated. This vessel is offered subject to sale, price change, location or withdrawal without notice.



AUSTRALIA - BULGARIA - INDIA - INDONESIA - ITALY - MALAYSIA - NEW ZEALAND - PANAMA - PHILIPPINES - SINGAPORE - SPAIN - UK - USA - VENEZUELA - VIETNAM