



SEABOATS

MARINE BROKERS WITH A GLOBAL APPROACH

AUSTRALIA - BULGARIA - INDIA - INDONESIA - ITALY - MALAYSIA - NEW ZEALAND - PANAMA - PHILIPPINES - SINGAPORE - SPAIN - UK - USA - VENEZUELA - VIETNAM

sales@seaboats.net - www.seaboats.net

SOLD - 34.55m Passenger Ferry



Listing ID - 3713

Description	34.55m Passenger Ferry
Date Launched	2012
Length	34.55m (113ft 4in)
Beam	8m (26ft 2in)
Draft	2.16m (7ft 1in)
Note	268.87T
Location	Papua, New Guinea
Broker	Peter Cookson peter.cookson@seaboatsbrokers.com +61 429 543 180
Price	POA

Port of Registry: Port Moresby

Type of Ship: Passenger Ferry (NSCU Class 1C VSL)

GMDSS Sea Area: N/A

Trading Area: Fly River and adjacent coastal areas of PNG

Class Notation: LRS + 10DA1 SSC Passenger Mono G3 + LMC

LOA: 34.55m

L.B.P.: 31m

Breadth (Moulded): 8m

Depth (Moulded): 3.45m

Height from keel to highest point

Gross Tonnage ITC '69: 265T

Net Tonnage: 85T

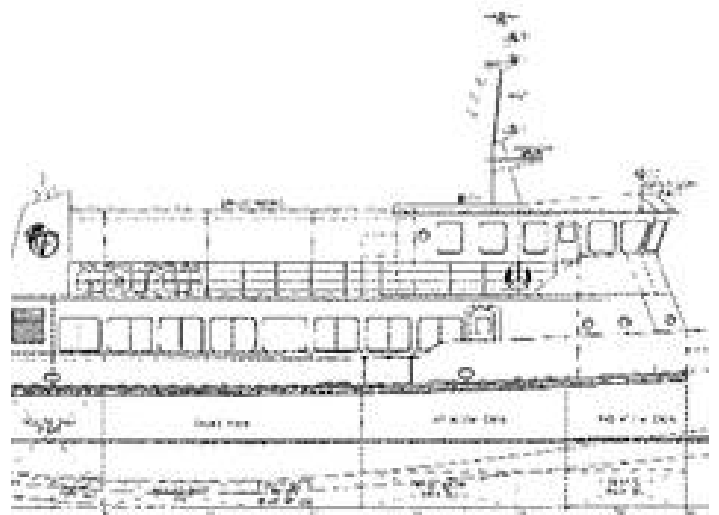
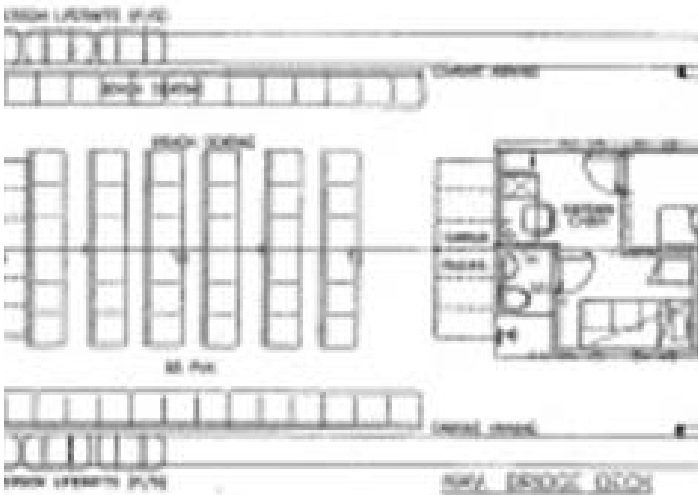
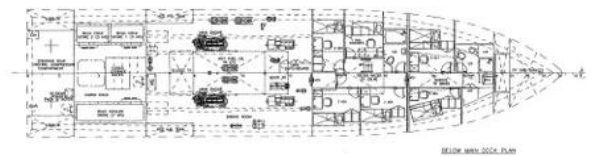
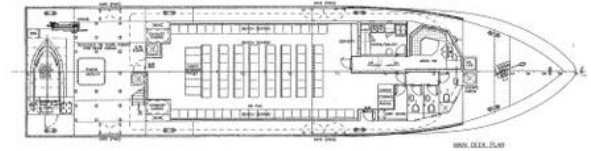
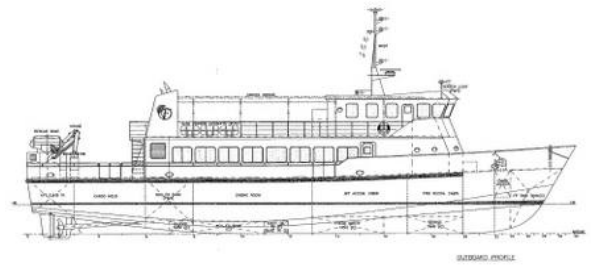
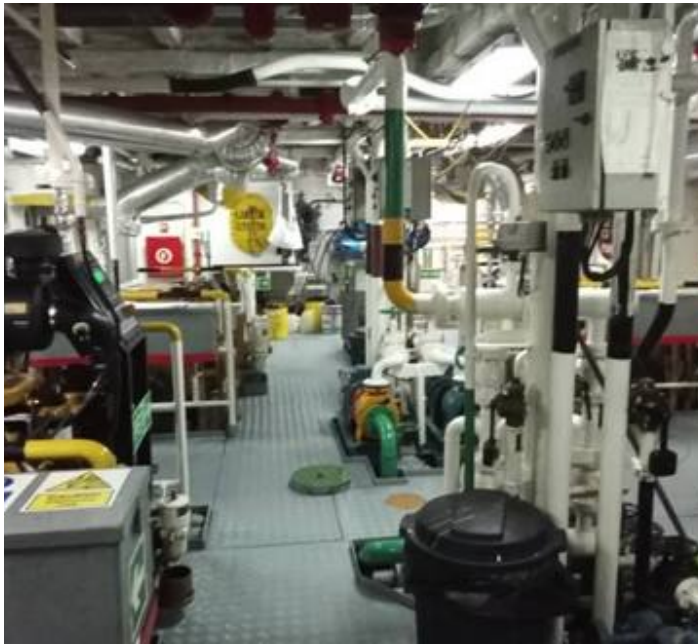
Deadweight (DWT): 80T
Summer Draft: 2.16m
Summer Displacement: 268.87T
Lightship Draft: 1.77m
Lightship Displacement: 187.63T
Deadweight: 58.87T
Builders & Place of Build: Sarawak Slipways
Date Keel Laid: Miri Sarawak
Date Launched: 27.04.2011
Year Built: 18.03.2012

Type and Number of Main Engines: 2 x Caterpillar C18 ACERT
Main Propulsion Power: 2 x 353 kW @1800 RPM 2
Number of Propellers: 2
Type and Number of Generating Engines: 2 x Caterpillar C4.4
Generating Engine Power: 2 x 60 kwe
Cranes: PALPINGER PK 4501M SWL 8T
Service Speed: 12 KTS @1500 RPM
Compliment: 10 crews
Ballast: 24.38t
Fuel Oil: 15.8t
Fresh Water: 10.98t

Certified for 150 passengers and 12 crew







The details of all vessels are offered in good faith but we cannot guarantee or warrant the accuracy of this information nor warrant the condition of the vessel. Any buyer should instruct their agents, or their surveyors, to investigate such details as the buyer desires validated. This vessel is offered subject to sale, price change, location or withdrawal without notice.

