



SEABOATS

MARINE BROKERS WITH A GLOBAL APPROACH

AUSTRALIA - BULGARIA - INDIA - INDONESIA - ITALY - MALAYSIA - NEW ZEALAND - PANAMA - PHILIPPINES - SINGAPORE - SPAIN - UK - USA - VENEZUELA - VIETNAM

sales@seaboats.net - www.seaboats.net

282ft Steel Deck Cargo Barge



Listing ID - 3772

Description	282ft Steel Deck Cargo Barge
Date Launched	2007
Length	89.95m (282ft)
Beam	27.43m (90ft)
Draft	4.573m (15ft)
Location	Singapore
Broker	Franklin Taylor franklin.taylor@seaboatsbrokers.com +64 27 276 5383
Price	USD 1.35million

Year Built/ Registry: 2007 / Singapore

Classification: ABS + A1 Tank Barge

Principal Dimensions

LOA: 89.95m (282ft)

Beam: 27.43m (90ft)

Depth: 5.49m (18ft)

Draft: 4.573m (15ft)

Deadweight: Approx. 7,700T

Deck Loading: 15T/m²

HULL SCANTLING

Deck Plating: 18mm

Bottom Plating: 14mm

Side Shell Plating: 14mm

Tanks: 30 Ballastable through manholes on deck.

BULKHEADS

2 longitudinal b/h thickness 10mm

9 transverse b/h plating thickness 10mm

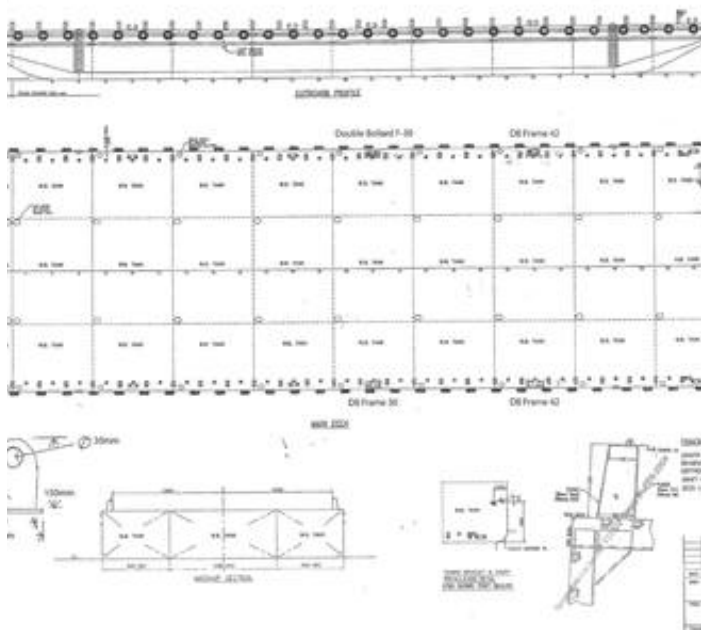
OUTFITTING

1 x 2200 kg anchor with hand winch.

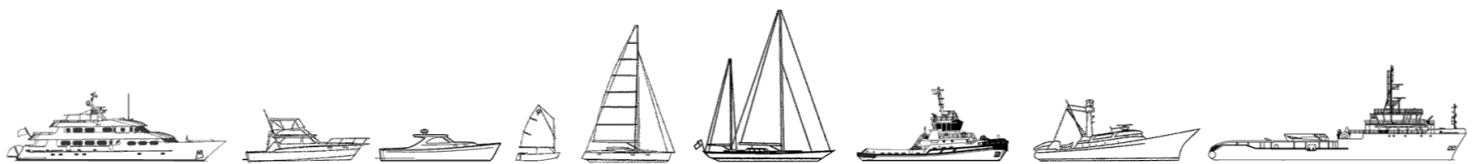
6 sets double bitt bollards at bow and 2 sets at stem all fitted with chafing chains.

58 heavy duty tire fenders.

30 manholes on deck one for each tank with recess type in cargo area.



The details of all vessels are offered in good faith but we cannot guarantee or warrant the accuracy of this information nor warrant the condition of the vessel. Any buyer should instruct their agents, or their surveyors, to investigate such details as the buyer desires validated. This vessel is offered subject to sale, price change, location or withdrawal without notice.



AUSTRALIA - BULGARIA - INDIA - INDONESIA - ITALY - MALAYSIA - NEW ZEALAND - PANAMA - PHILIPPINES - SINGAPORE - SPAIN - UK - USA - VENEZUELA - VIETNAM