



# SEABOATS

MARINE BROKERS WITH A GLOBAL APPROACH

AUSTRALIA - BULGARIA - INDIA - INDONESIA - ITALY - MALAYSIA - NEW ZEALAND - PANAMA - PHILIPPINES - SINGAPORE - SPAIN - UK - USA - VENEZUELA - VIETNAM

[sales@seaboats.net](mailto:sales@seaboats.net) - [www.seaboats.net](http://www.seaboats.net)

## 46m Utility Supply Vessel



### Listing ID - 3884

#### Description 46m Utility Supply Vessel

**Date Launched** The vessel is still under construction. Full construction can be completed within 8 months after signing contract

**Length** 46m (150ft 11in)

**Beam** 15m (49ft 2in)

**Draft** 3.5m (11ft 5in)

**Location** Indonesia

**Broker** Franklin Taylor  
[franklin.taylor@seaboatsbrokers.com](mailto:franklin.taylor@seaboatsbrokers.com)  
+64 27 276 5383

**Price** US\$ 5.2M

**Price Notes** Full construction can be completed within 8 months after signing contract

LOA: 46m

Breadth: 15m

Ship Height: 4.85m

Draft: 3.5m

Speed Design: 12.5 knots

Hull: Steel Plate RINA Class Grade A

Deck Space Area: 300 M2

#### Accommodations

Bed Room: 15 rooms Total: 45 pax

Clinic: 1 room

Mess Room: Capacity 20 persons  
Recreations Room: Capacity 18 persons  
Meeting Room: 1 room  
Laundry Room: 2 rooms  
Dry Store: 14 M3  
Freezer: 12 M3  
Chiller: 12 M3

### **Main Engine**

Engine: 3 units

1. Type and Merk: Marine Engine / Merk Catterpillar type C32 1000 Hp RPM  
Propeller Type: Fix Pitch Propeller c/w Kortnozzel
2. Type and Merk: Marine Engine Merk Catterpillar type C2 1000 hp RPM  
Propeller Type: Fix Pitch Propeller c/w Kortnozzel
3. Type and Merk: Marine Engine / Caterpillar 3512 2000 Hp Rp. 1800 Rpm  
Propeller: Azimuth Propeller 360 Dec

### **Fuel Monitoring System**

Jumlah: 3 unit

Type: Tracking report fuel monitoring system

Engine: 3-unit main engine, 3-unit auxiliary engine

### **Auxiliary Engine**

Jumlah 2 unit

I. Engine Type and Merk: Catterpillar 3408

HP: 300 kW @ 1500 Rpm

Type: Marine engine type

Generator Merk: Marelli

Capacity: 180 KVA, 380 V 50 Hz 3phz

### **Navigation and Communication System Tools**

Radar Furuno 48 Mile: 1 unit

Radar VHF Furuno: 3 units

Radio SSB: 1 unit

DGPS: 1 unit

Emergency Compass: 1 unit

Gyro Compass: 1 unit

Auto Pilot: 1 unit

Navtex Dan Printer: 1 unit

Echosounder Dan Recorder: 1 unit

GPS Furuno type GP 50: 1 unit

Wind Indicator: 1 unit

GMDSS System (Inmarsat C): 1 unit

Radar ARPA: 1 unit

Clinometer: 1 unit

Barometer: 1 unit

Public Addresser: 1 unit

Internal Communication: 1 unit

VHF Portable Radio: 6 units

UHF Portable Radio: 4 units

AIS: 1 unit

### **Thruster**

Bow Thruster: 2 units x 3 tons cap

BT No.1

Driven: Diesel Engine Detroid 300 p @2100 Rpm

BT No.2

Diameter Propeller: Diesel Engine Detroid 300 Bhp @2100 RPM

Engine type and Merk: Catterpillar 3408

HP: 300 Kw @ 1500 Rpm

Type: Marine engine type

Generator Merk: Marelli

Capacity: 180 KVA, 380 V 50 Hz 3phz

### **Port Genset**

Engine Type and Merk: Catterpillar

HP: 150 Kw @ 1500 Rpm

Generator Merk and Type: Marelli

Capacity: 74 KVA 380 Volt 50 HZ 3 Phz

### **Emergency Generator**

Jumlah: 1unit

Engine: Catterpillar 3412

HP: 550 BHP

Generator: Catterpillar

Capacity: 400 KVA, 380V 50 HZ 3 Ph

### **Pump-Pump Cargo**

Water Maker

Jumlah: 1 unit

Capacity: 5 m<sup>3</sup>/day

Air Conditions

Jumlah: 1 unit (Central)

Fresh Water Cargo Tranf Pump

Jumlah: 2 units

Cap: 60 M<sup>3</sup>/hr @ 50 mtr Head

Daya: 60 kW 380 Volt 3 Ph

Fuel Oil Transfer Cargo Pump

Jumlah: 2 units

Cap: 60 M<sup>3</sup>/hr @ 50 m head

Daya: 60 kW 380 Volt

### **Safety Equipment**

Rescue Boat: 1 unit (capacity 6 pax) C/W Motor Engine 35 Hp

Inflatable Life Raft: 4 unit @ capacity 25 pax

Lifejacket: 75 pcs (all bunks, E/R control room, bridge, and additional box)

EEBD: 6 units

With Smoke & Light: 2 units

Lifebuoy with Light: 2 units

Lifebuoy with Line: 4 units

Work Vest: 8 units

Emergency Lights: All room, including escape route

Pyrotechnic Appliance: 1 set (12 parachute signals, 8 hand flares, 2 smoke signals & line throwing)

SART: 2 units

EPIRB: 1 unit

Two Way Radio Apparatus: 3 units

Para Guard Stretcher: 1 unit

First Aid Room: 1 room

First Aid Kit: 6 units (on each level on the rescue boat)

Eye Wash Station: 2 units

Rescue Zone: 2 units at each side

Clear View Screen: 4 units (after and forward control station)

### **Fire Fighting & Protection System**

Fire Alarm System: 1 set (smoke and heat detector)

CO2 System: 16 Cyl CO2 @45 kg (covered engine room)

General Alarm System: Sound and Light

Sprinkle System: All room (kecauli engine room dan bridge) additional

Water Mist Sprinkle System: Engine room

Fire Protections Vessel: Around vessel structure

Fire Hydrant: Capt 35 M3/hr (From GS Pump) 12-point hydrant stations

External Fire Pump: 2 unit @ Cap 1200 M3

Type: Diesel engine driven fire pump

Engine: Caterpillar type 3508 1200 Bhp @ 1800 Rpm

Pump: Merk Sigmuno Pulso meter pump, England

Head: 102 m

Hydro Test: 25.5 bars

Fire Monitor (Water/foam/mix): 4 units (2-unit electrical rotations system and 2-unit manual rotations system)

Fixed Emergency Fire Pump: 1 unit (connected to hydrant)

Fireman Outfit: 2 units (with dedicated communication device)

Breathing Apparatus: 2 units

Portable Fire Extinguisher: 1 set (dry powder, CO2, and foam)

### **Deck Equipment**

Tugger Winch: 1 unit (Cap 10 tons)

Capstan: 2 units (Cap 3 tons)

Deck Crane Cargo: 1 unit (Caps 5 tons @ 12m)

David Crane: 1 unit (Capt 2 tons @ 8m)

Stern Roller: 1 unit Dia 2m x 6m

Railing Cargo with Fairleads: 1 on each side, also as deck barricade

### **Anchoring Equipment**

Anchor Winch: 1 unit, electro hydraulic cap 25 tons

Anchor Each: 1500 kg preach side

Dia Chain: 30mm

Chain Shackle Port: 12 shackles

Chain Shackle Starboard: 12 shackles

### **Steering System**

Hydraulic Power Pack: Electric Hydraulic c/w 2 joystick (Fwd and Aft control)

Emergency Steering Pump: Hydraulic hand pump

### **Pollution Prevention**

Oil Spray Boom: 2 unit (on each side)

Oil Water Separator: 1 unit (with an automatic monitoring 15 ppm & stopping device)

SOPEP Kit: 1 set

Sewage Treatment: 1 unit (5 M3)

Garbage Compactor: 1 unit

Exhaust Emission Control: 1 unit

### **Additional Equipment**

Towing winch

Shark jaw

Deck crane

Tugger winch

A. Frame

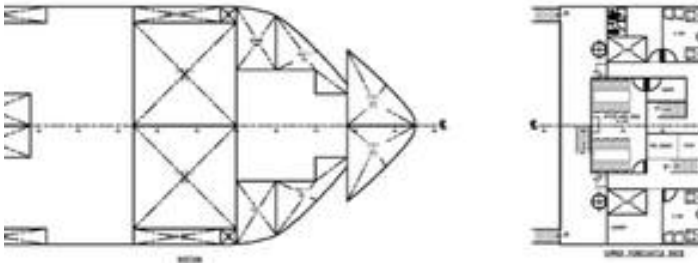
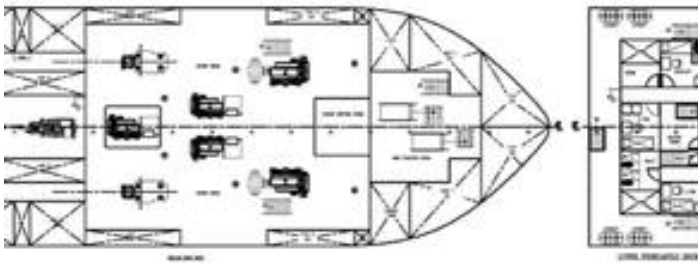
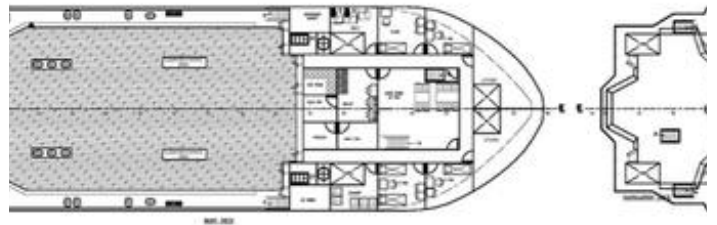
### **Fendering System**

Tire Fender: Around vessel c/w tire fender

Pipe Fender: On each side of the vessel

Bow Pusher: Covering with hard wood





The details of all vessels are offered in good faith but we cannot guarantee or warrant the accuracy of this information nor warrant the condition of the vessel. Any buyer should instruct their agents, or their surveyors, to investigate such details as the buyer desires validated. This vessel is offered subject to sale, price change, location or withdrawal without notice.

