



SEABOATS

MARINE BROKERS WITH A GLOBAL APPROACH

AUSTRALIA - BULGARIA - INDIA - INDONESIA - ITALY - MALAYSIA - NEW ZEALAND - PANAMA - PHILIPPINES - SINGAPORE - SPAIN - UK - USA - VENEZUELA - VIETNAM

sales@seaboats.net - www.seaboats.net

SOLD - 26.7m ASD Harbour Tug



Listing ID - 3886

Description 26.7m ASD Harbour Tug

Date 1982

Launched

Length 26.7m (87ft 7in)

Beam 7.6m (24ft 11in)

Draft 2.4m (7ft 10in)

Location Gisborne, New Zealand

Broker John Kearns
john.kearns@seaboatsbrokers.com
+64 21 400 805

Price POA

26.7m ASD Harbour Tug, built 1982 at Kanagawa Dockyard, Kobe, Japan. Powered by twin Niigata 6L 22LX Diesel engines producing 1650 kW at 900 RPM and 26 tonne bollard pull with twin aft mounted Niigata ZP-1A "ZPeller" Azimuth propulsion units with aft direction skeg keel. Two Yanmar 4KDLX auxiliary generators providing 75 kVA. Fuel capacity 22.66 m³. Accommodation for 5 crew.

VESSEL SPECIFICATION

Builder: Kanagawa Dockyard Co. Ltd, Japan

Built: 1982

LOA: 26.70 m

Beam: 7.60 m

Draft: 2.40 m

Bollard Pull: 26 ton

GRT: 160 ton

NT: 48

PERFORMANCE

Bollard Pull: 26 tonne

Speed: 10 knots

MAIN ENGINES

Main Engine: 2 x Niigata 6L 22LX

Output: 825 kW @ 900 rpm

No of Cylinders: 6

Bore: 220 mm

Stroke: 290 mm

PROPULSION UNITS

Make: 2 x Niigata ZP-1A Z-Peller Azimuth Thrusters

Input shaft rpm: 900 rpm

Propeller rpm: 341 rpm

Reduction: 2.641: 1

Slipping Control Range: 50 – 330 rpm at engine idling speed (400 rpm)

Propeller: 4 Blade, Fixed Pitch, Kaplan type with Kort Nozzle

Diameter: 1720 mm

MAIN GENERATORS

Engines: 2 X Yanmar, 4KDLX, Marine Diesels, 116 kW @ 1500 rpm

Generator: 2 X Taiyo-Electric FB28C, 75 kVA 225 V AC, 60HZ @ 1800 rpm

Main Air compressor: 2 X Tanabe compressors, LHC-33, 22 m³ /hr

Air Reservoirs: 2 X 200 L @ 30 kg / cm²

Heat exchangers are provided for:

Main Engine Cooling Water x 2

Main Engine Lube Oil x 2

Z-Peller Hydraulic Oil x 2

Z-Peller Lube Oil x 2

Hydraulic Power pack Oil x 1

Fresh Water Generator x 2

TANK CAPACITIES

Fuel Oil: 22.66 m³ (2 tanks)

Lube Oil: 4.07 m³

Fresh Water: 13.04 m³

ELECTRONICS

Radar: JRC JMA 306MII Marine Radar

Chart Plotter: Raymarine eS7x Hybridtouch Multi-function Chart Plotter

Autopilot: Robertson AP9 Mk 3 Autopilot

Echo Sounder: Furuno FCV-295 Colour Sounder

VHF-DSC Radiotelephone: Uniden Polaris DSC VHF

VHF-DSC: Uniden Solara DSC Marine Radio

Magnetic Reflector Compass: Lilley & Gillie

EPIRB: GME Accusat MT 603G406 MHz

Manual Control Searchlight: Sunlux 300C

ACCOMMODATION

5 berths in single and shared cabins

Galley and mess area.



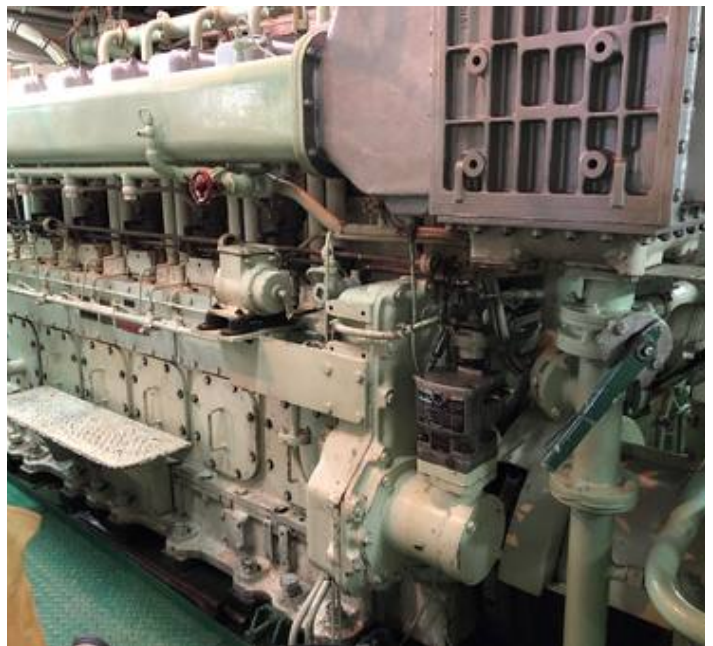




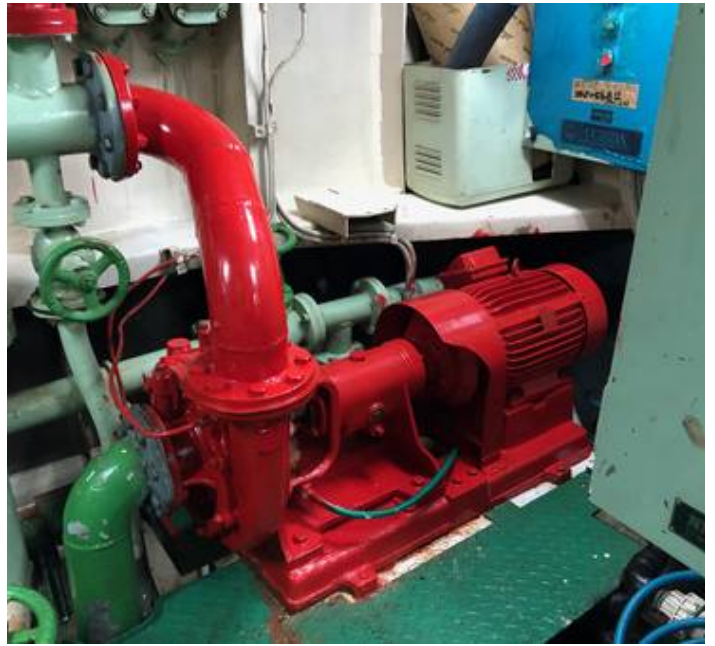
















The details of all vessels are offered in good faith but we cannot guarantee or warrant the accuracy of this information nor warrant the condition of the vessel. Any buyer should instruct their agents, or their surveyors, to investigate such details as the buyer desires validated. This vessel is offered subject to sale, price change, location or withdrawal without notice.



