



SEABOATS

MARINE BROKERS WITH A GLOBAL APPROACH

AUSTRALIA - BULGARIA - INDIA - INDONESIA - ITALY - MALAYSIA - NEW ZEALAND - PANAMA - PHILIPPINES - SINGAPORE - SPAIN - UK - USA - VENEZUELA - VIETNAM

sales@seaboats.net - www.seaboats.net

48m 150t Crane Vessel (Heavy Lift) & Diving Support



Listing ID - 3894

Description 48m 150t Crane Vessel (Heavy Lift) & Diving Support

Date 1985

Launched

Length 47.6m (156ft 2in)

Beam 17m (55ft 9in)

Draft 3m (9ft 10in)

Location West Africa

Broker Richard Pierrepont
richard.pierrepont@seaboatsbrokers.com
+44 7798 607 323

Date Built: 1985

LOA: 47.6m

LPP: 45m

Beam: 17m

Draft Operational: 2.8m

Draft (Max): 3m

Light Ship Draft: 0.75m

Flag: Panamanian

Class: PMDS

Gross Tonnage: 658 Mt

Net Tonnage: 197 Mt

Deadweight: 1060 Mt

Max Speed: 9 Knots

Service Speed: 7-8 knots

Deck Cargo Space: 400 m2

Deck Loading: 10 MT/m²

Accommodation : 50 Persons (Fully air-conditioned)

Power: 2* 650 HP (Niigata)

Fuel Consumption: 2.5 T / Day

F.W Maker: up to 16 T / Day

Machinery Container with electric and diesel driven Compressors, UW-Welding and Hydraulic Powerpack

Crane: 150T and 34.5m Boom

6* point mooring

Propulsion and Machinery

Main Engines

Make: 2 x Niigata Ironworks Co. (Diesel)

Model: 6mg /L/ 18 CX

STBD Engine: S/N 17452

PORT Engine: S/N 17453

Cylinders: 6

Rated Power: 1300PS

HP: 650

Rated Speed: 950 rpm

Propellers: 2 x fixed pitch with 4 wings (diameter 1.7m)

Engine Clutches

Model: MGN 486

Clutch Operating: 17-20 kg/cm²

Lube Oil: 2-4 kg/cm²

Main Pump: 20 l/min

Standby Pump: 50 l/min

Pressure: 20 kg/cm²

PORT Clutch: No. 4861079, S03549000

STBD Clutch: No. 4861078, S03548000

Auxiliary Engines

Engines: CATERPILLAR – D348 CAT

Engine 1: S/N 36J2022

Engine 2: S/N 36J2015

HP: 480

RPM: 1500

Max Altitude: 1400

Main Generators

Model: 2 X Perkins 1300 series (1306C-E87TAG6), synchronised (installed in 2013)

Capacity: 2 x 250 KVA, 220V/400V, 50Hz (Optimum power output 350KVA)

Emergency Generator

Make: Perkins

Rated Power: 125 KVA

Poop deck providing alternative (or emergency) power for general purpose use and when in port. 1 X Atlas Copco LP Compressor delivering 311cfm at 12Bar

2 x Lincoln Welding Generators (Optional)

Cooling Sea Water Pumps

Bilge Pump – No 83251

GS Pump, bore 80mm, type SM, capacity 25m³/h, total head 26m
RPM 1800, power 5.5kw, manufacturer: Ishikura Pump Meg Co Ltd

Fire pump – No 83252

GS pump, bore 80mm, type SM, capacity 25m³/h, total head 25m
RPM 1800, power 5.5kw, manufacturer: Ishikura Pump Meg Co Ltd

Crane cooling pump – No 83253

GS pump, bore 80mm, type SM, capacity 25m³/h, total head 25m
RPM 1800, power 5.5kw, manufacturer: Ishikura Pump Meg Co Ltd

Cooling SW pump for A/E 1

Ajax – Elite; size E65-20-A20C; serial no. 33987 – 2C imp. Dia 214/F
manufacturer: KSB Aja Pumps PTY Ltd, Australia

Cooling SW pump for A/E 2

Ajax – Elite; size E65-20-A20C; serial no. 2002/004 Imp. Dia
manufacturer: KSB Aja Pumps PTY Ltd, Australia

Pre Lube Oil Pump for Main Engines

BORE 50m/m, type HMG, capacity 10m³/h, RPM 1200, head 20M, power 2.2kw, no. 83242, manufacturer: Ishikura Pump MFG Ltd

F.O. Transfer Pump

BORE 25 m/m, type HMG, capacity 3m³/h, RPM 1200, head 20M, power 0.75kw, no. 83257, manufacturer: Ishikura Pump MFG Ltd

Motor Compressor

No 58-30252, SKH-2ME, RPM 1550, capacity 10.5 m³/h, max P – 30kg/cm²

Deck Motor Compressor

Atlas Copco XA146 with 320cfm/12ltr/sec @8bar, weight 1.8t

Governors

A/E no.1 governor

Type WOODWARD UG8; designation A8520-314; governor RPM 1100-1550; serial no. 1345211 Speed motor: type V-10R V115 Hz60/DC; No Z0427488; RPM 3 INSA; Toro OZ IN 24

A/E no. 2 governor

Type WOODWARD UG8; designation A8520-314; governor RPM 1100-1550; serial no. 1390456 Speed motor: type V-10R V115 Hz60/DC; No Z0427374; RPM 3 INSA; Toro OZ IN

M/E governors

DIESEL KIKI – PHD6-PC 105856-2350 STBD Eng. Ser. No. 34612222

PORT Eng. Ser. No. 34812438

Oil SAE 20-40

Gov. speed 400-2000 RPM Change oil – every 3000 h

Mooring System

The vessel has a 6-point mooring system with 3.7 ton Delta Flipper anchors.

Winch: Single Drum

Make: APOA 7R Hydraulic

Manufacturer: Daido Heavy Machinery Co.

Rated Capacity: 12000 kg f.

Rated Speed: 10/12 m/min

Wire: each 3000ft of 32mm dia.

Hydraulic Pump for Winches: Daido Heavy Machinery Co, type A-7-0010 approx. 0012A

Video Monitoring System

Bridge monitored remote payout & load meters

Camford communications linked throughout

Safety Equipment

The vessel is outfitted with safety equipment to comply with the safety requirements as set out in the vessel safety plan in accordance with SOLAS.

The vessel is equipped with one rescue boat capable of accommodating 8 people and 8 liferafts (self-righting/with self-contained air support system/fire protected) with the capacity to accommodate 200 people as well as 12 life buoys and 112 life jackets.

Rescue boat launching and recovery arrangements: Davit, radial type, 2 Tons / Winch, electric motor, 2Tons

Line throwing appliances with 4 rockets and lines – COMET (loc. wheel house)

12 rockets parachute flares – KORYO (loc. wheel house)

Fire Fighting

8 smoke detectors (TYCO), located on bridge, Capt. deck, poop deck, mess room, engine room & other

Fire alarm (C-TECH alarm bell), located on bridge, Capt. deck, poop deck, mess room, engine room & other

Control panel on bridge, alarm is automatically activated if fire signal not acknowledged in 2 minutes

Fixed CO2 firefighting systems complete with T100 Marine Controller Fire Monitoring Systems.

Fire hydrants and extinguishers according to specifications.

A comprehensive H2S and LEL detection is installed, comprising of 4 deck-mounted sensors, with remote monitors on the bridge.

Bridge Navigation and Communications Systems

VHF Sailor: 2 sets

SSB ICOM: 3 sets

GMDSS: Area A1, A2 and A3 (International)

9 GHz Radar: Furuno FAR2817

9 GHz Radar Transponder: TAIYU MUSEN TBR600A (3 sets)

Second Radar: ICOM MR1200

ATA: Furuno FAR2817

Magnetic Compass: Daiko Keiki

Gyro Compass: Anschutz Kiel Standard ST-06

GPS Chart Plotter: GARMIN (MAP 4008)

GPS Chart Plotter: SAMYUNG (NAVIS 3000)

BNW AS: Samyung BNW50

Echo Sounder: dual digital and paper

Satellite E.P.I.R.B.: COSPAS-SARSAT

A.I.S. as required for ISPS: COMNAV X3 Class A

LRIT: SATAMATICS SAT201i

Speed and distance measuring device through the water

Echo Sounding Device: HONDEX HE-770

Rudder angle indicator: TOYO KEIL

Propeller revolution indicator

Telephone to Emergency Steering Position: PANASONIC

General Emergency Alarm System: Bridge, accommodation, alleyways, stores & engine room

Public Address Systems: Speakers in accommodation, alleyways, mess room, galley, main deck & engine room

Navigation Lights: Fore masthead/Main masthead/Port side/Stb side/Stern/Anchors # 1 & 2/NUC

Signaling Apparatus

Day Light Signaling Lamp: ALDIS lamp (loc. Bridge)

Forecastle Bell: Bronze (loc. F'ctle)

Ship's Whistle: electric (loc. Bridge top)

Weather fax / Navtex

INMARSAT 'C' Satellite System

Camford Hard ware communication systems to Bridge, Crane, Dive Control, ROV/Survey Control, Project Office and Engine Room.

100 Mb Ethernet LAN connecting offices, bridge and owner / client cabins.

Internet access via SAT DSL (3Mbps)

WLAN up to 20km radius from the vessel can be provided.

Satellite Data/Communications System

Tank Capacities

Marine Gas Oil: 65T

Potable Water: 120T

Water Ballast: 374T

Lube Oil: 1000L

Fuel Consumption

Cruising Mode: 2.5T/day

On Anchor Pattern: 0.6T/day

Lube Oil: 16L/day (avg)

Water Maker

Water Maker: Selmar-Atlantic-SW700, serial no. 3051

EL. Supply: 400V, 50Hz 3-phase

Consumption: 15A

Working Pressure: 850psi-60bar

Water Temperature: 1-46C

Automatic Shutdown: 1000psi-70bar

Filtration: 3x5x20"spun polypropylene

Max Silt Density Index: 5

NTU Max: 1

PH Value: 2-11

Chlorine Tolerance: 0.1 ppm

Typical Salt Reject: 99.1%

Fresh Water Production: Up to 16 Tons/Day

Max Feed Water Input Rate: 2600L/H

Minimum Required Input Pressure: 1 bar

Membrane Containers: Fiber glass

Flushing System: Manual

Sewage Treatment Plant

Certified Hamworthy Super Trident-8

Modular Accommodation Units

Modular accommodation units can be added subject to Client requirements.

150ton Main Crane (Rigged for 120ton)

Model: SKK-1700DT-AS, Total Rotating System, Shikoku Kenki Co LTD, Kochi, Japan

Main Engine: Yanmar Diesel Engine 1 x 6LAAL-DTN-1

Rated Power: 470PS

Cylinders: 6

RPM: 1800

Engine Clutch: NIIGATA CONVERTER CO LTD, Model TDCIN 11-26045, ser. No. TY1126056

Air Compressor: Small sized reciprocating, type GN J5-3, 39kg/cm², 58mmx2x98mm, 3.7kw, 875 RPM

MEJI AIR COMPRESSOR MFG CO LTD, OSAKA JAPAN

Air Bottle: SKK – 900 DTA, No x 42884

Crane Wires Diam: Main SWR D/A 38,35mm, Aux SWR D/A 37,79 mm, Boom D/A 28,75 mm

Boom Length: No. 1: 33.5 meters

Hook Capacity: No. 1: 120 Tons @ 8.3 m

Working Radius: No. 1: 8.3 to 23.1 m

Hoist Speed: No. 1: 0-6m/min

Lowering Speed: No. 1: 6m/min

Wire Rope: No. 1: 36mm dia. 8 Falls

Whip Line: 34.5 meters

Whip Line: 30 Tons

Whip Line: 9.2 to 25.9 m

Whip Line: 0-25m/min

Whip Line: 0-25m/min

Whip Line: 28mm dia, 2 Falls

Tugger Winches: 3 x 2.0T each

(Optional 2 x 5.0T additional if required)

On Board Surface Supplied Air Dive System

SMS Air/Mixed Gas Dive system can be made available according to Client / Project requirements. The system comprises of three units all housed in 20ft ISO containers, dimensions being L x W x H = 5900 x 2330 x 2380 mm.

DDC-Dive Control Container

60" Air Dive Chamber ADC 2011/101

Built: 2011

Built by: Shreeji Engineering

Inspected by: M/S Bureau Veritas

Rules Code: ASME SEC. VIII DIV. 1-1ED 2008

P.P. No.: SWE-SE-001

Capacity: 6762L

MFG. Sr. No.: SE-757

Content Fluid: Air

Material of Construction: SS316

Design Pressure: 135/1.055 kg/cm² (g)

Radiography: 100%

Corrosion Allowance: 1mm

Heat Treatment: NIL

Test Pressure: 212 kg/cm² (g)

Weight Empty: 2860 kg

Full of Water: 9622 kg

Dive Control

Dive Panel: Three Diver Air/Mixed Gas

Video Systems: Hat mounted – 2 systems, All remotable, Hand Held System (option), Remote from ROV/survey desk, Chamber Monitoring System

Communications Systems: Three Diver, Camford Comms remotable, VHF base station & hand held units

Thuraya phone system

Gas Analysis: Divers & Chamber

Burning/Welding: Remote control

IMCA Medical Kit: 2 x BA sets, Chamber Drench and fire suppressant system

Computer Systems: Project laptop, net-workable

Machinery Container

Diving Compressor No: 1 – Diesel

Bauer HP Compressor

Manufacturer: Norfolk Virginia USA

Date of Manufacture: 05/2002

Model No: K10-D/A

Block no: B/5610/01

S/N: 024532

Max Pressure: ~5000 PSIG

Capacity: 8.5 CFM

Charge rate: 10.2 CFM

Motor: 10 HP

Diving Compressor No. 2 – Electric/3 phase L&W

(Lenhardt & Wagner) HP Compressor

Manufacturer: Germany

Date of Manufacture: 2012

Model No: LW 570E

S/N: 61281110

Max Pressure: 225 bar Charging

Capacity: 20.1 cfm Power: 15 kW

Speed: 1060 rpm

Machinery

Hydraulic Power Pack x 2 Welding/Cutting machine x 1

Firefighting sprinkler system

All spares and ancillary equipment

Non-Containerized Units

Diving Compressor No. 3 - Diesel

L&W (Lenhardt & Wagner) HP Compressor

Manufacturer: Germany

Date of Manufacture: 2005

Model No: LW 450D

S/N: 2716/8/03

Max Pressure: 225

Charging Capacity: 15.9 cfm

Power: 11 kW

Speed: 980 rpm

Workshop/Rigging/Tools Container

Workshop unit containing all ancillary equipment, spare parts, equipment specific tools, project tools & rigging. Additional equipment includes scuba replacement packs, digital hand held camera systems and a full range of underwater tools depending on Client/Project requirements.

Diving Ancillary Equipment

5 X KMB 27 Helmets

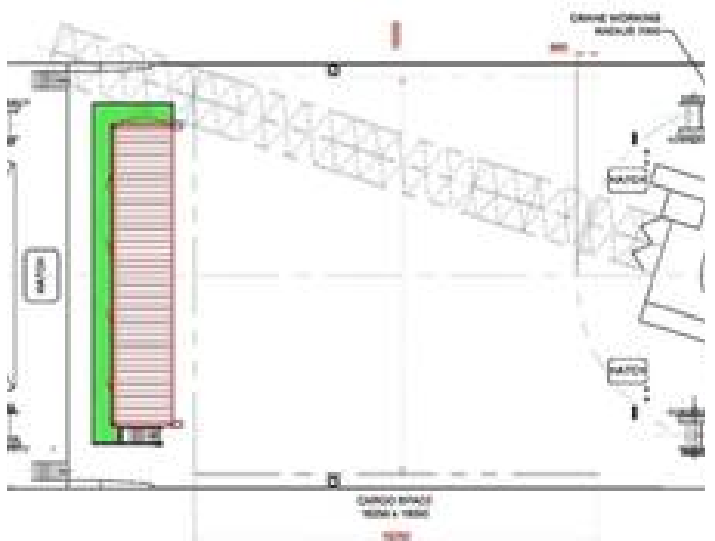
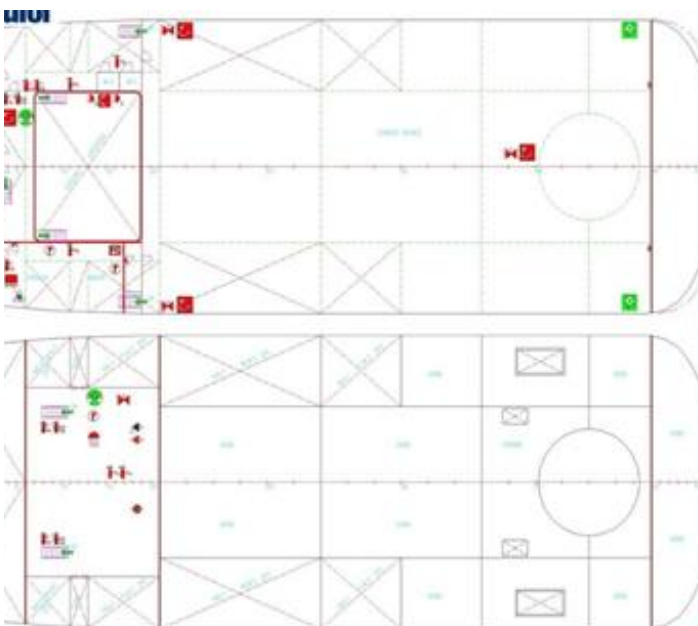
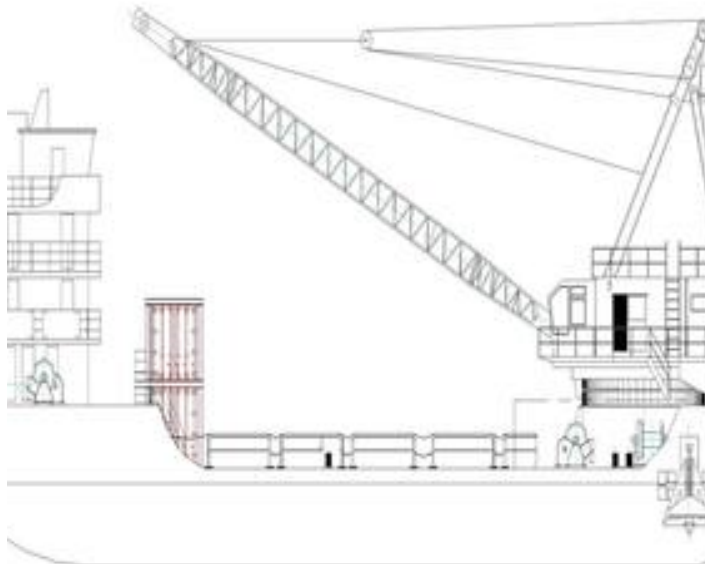
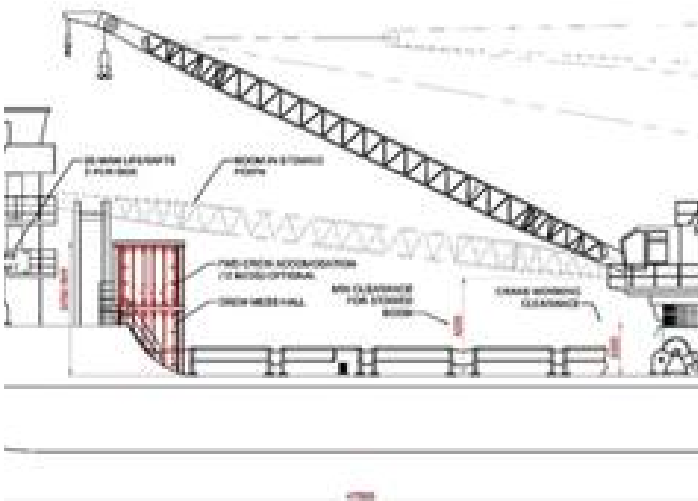
6 X KMB 18 Band Masks

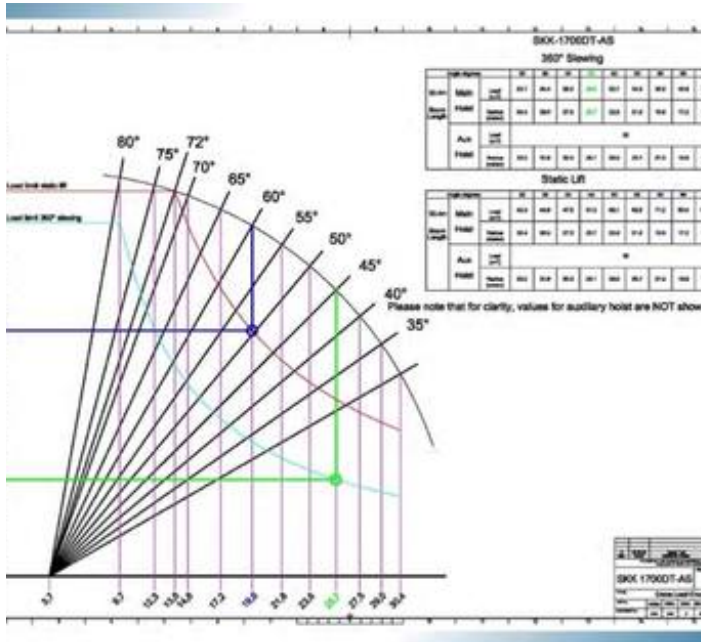
3 X 300 m Jacques Diving Hoses

2 X 150 m Jacques Diving Hose

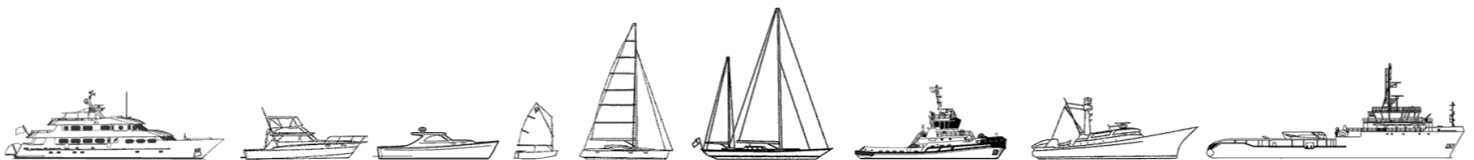








The details of all vessels are offered in good faith but we cannot guarantee or warrant the accuracy of this information nor warrant the condition of the vessel. Any buyer should instruct their agents, or their surveyors, to investigate such details as the buyer desires validated. This vessel is offered subject to sale, price change, location or withdrawal without notice.



AUSTRALIA - BULGARIA - INDIA - INDONESIA - ITALY - MALAYSIA - NEW ZEALAND - PANAMA - PHILIPPINES - SINGAPORE - SPAIN - UK - USA - VENEZUELA - VIETNAM