



SEA BOATS

MARINE BROKERS WITH A GLOBAL APPROACH

AUSTRALIA - BULGARIA - INDIA - INDONESIA - ITALY - MALAYSIA - NEW ZEALAND - PANAMA - PHILIPPINES - SINGAPORE - SPAIN - UK - USA - VENEZUELA - VIETNAM

sales@seaboats.net - www.seaboats.net

NEW BUILD - 6m Alloy RIB



Listing ID - 3961

Description	Aluminum RIB
Date Launched	Built to order, 6 weeks build time
Length	6m (19ft 8in)
Beam	2.6m (8ft 6in)
Draft	0.3m (11in)
Location	ex factory, China
Broker	Giuseppe Filippone giuseppe.filippone@seaboatsbrokers.com +39 329 886 8343
Price	from USD 11,500

Based in China Colton Yachts is an experienced builder of rigid inflatable boats of alloy or composite construction. They have an extensive catalog of models for both professional and recreational use that SeaBoats are proud to market all over the globe.

Models range from 6 to 9.5 mt. and are characterized by good quality, engineering and performance. All at a very competitive price.

BB 600 is the smallest alloy model. Built to be strong and reliable this rib is a perfect choice if you require a safe and versatile platform, able to perform in all sea-conditions. BB 600 can easily be trailered and the shipyard can arrange delivery anywhere at reasonable costs.

Standard features include

Deep “V” powder-coated aluminium hull with self-bailing cockpit, doubled drains, transom extensions, motor well, bow locker, keel guard

Lifting eyes

6 chambers Hypalon buoyancy tubes

comfortable passenger seats

spacious deck with an antislip surface

high capacity of fuel tank

Two paddles, high-efficiency foot pump

Repair kit and manual

BB-600 has a payload of 1255 Kg, with a capacity of 12 passengers. Power is single outboard, up to 280 Hp maximum.

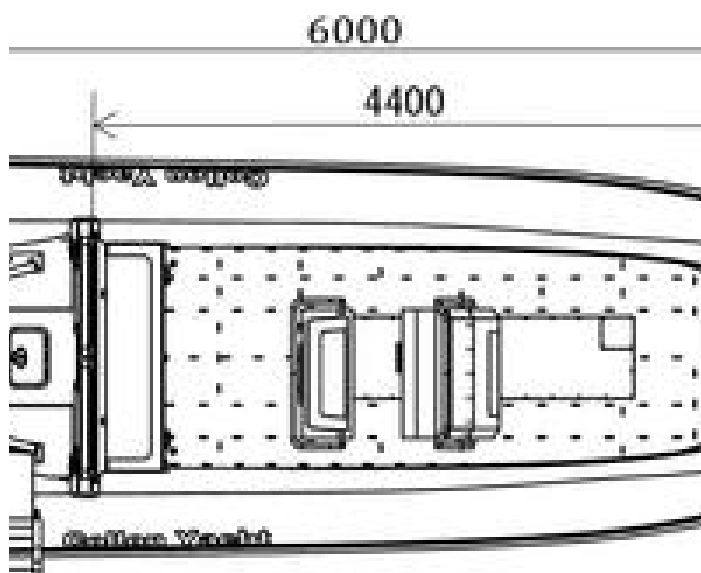
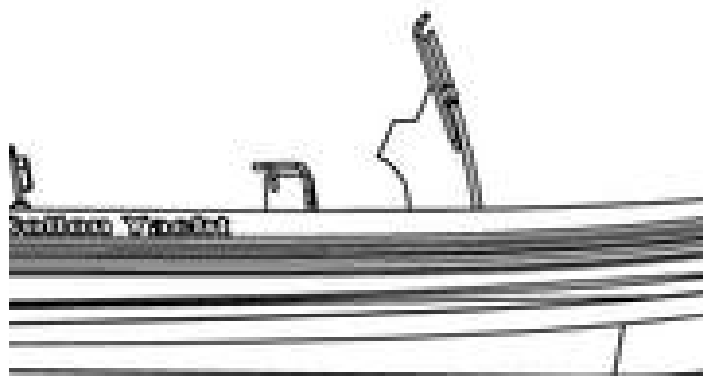
Standard Equipment :

- Taiwan hypalon or ORCA hypalon
- Integrated strong inside keel
- Lockable double bow lockers with cushion
- Integrated transom supports
- 130L Integrated built in fuel tank
- Middle console with front seat with cushion
- Middle seat with cushion
- Rear seat with cushion
- Safety valves
- Self-draining valve
- Bollard
- Lifting points and towing eyes
- Lifting handles
- Heavy duty rubbing strake
- Bilge pump
- Aluminum roll bar with lights
- Black anti-Slip EVA pad
- Full length keel guard
- Foot pump, oars, repair kit

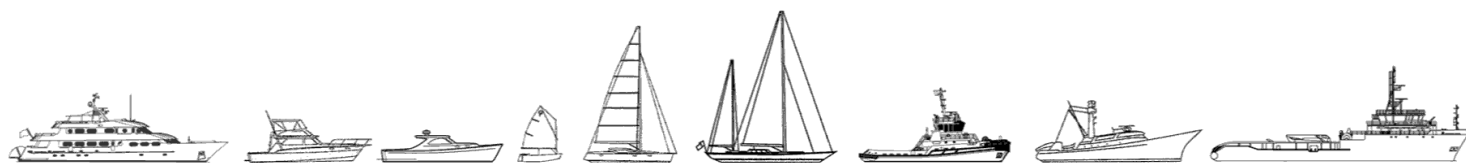
Optional Equipment :

- Foldable ladder
- Ladder on roll bar
- Boat trailer
- T-top canopy
- Rear platform
- Boat overall cover
- Hydraulic steering system
- 65L live fish well
- Electric pump
- Thick EVA pad(8mm)
- Shower system
- Seat cushion with double lines





The details of all vessels are offered in good faith but we cannot guarantee or warrant the accuracy of this information nor warrant the condition of the vessel. Any buyer should instruct their agents, or their surveyors, to investigate such details as the buyer desires validated. This vessel is offered subject to sale, price change, location or withdrawal without notice.



AUSTRALIA - BULGARIA - INDIA - INDONESIA - ITALY - MALAYSIA - NEW ZEALAND - PANAMA - PHILIPPINES - SINGAPORE - SPAIN - UK - USA - VENEZUELA - VIETNAM