



# SEABOATS

MARINE BROKERS WITH A GLOBAL APPROACH

AUSTRALIA - BULGARIA - INDIA - INDONESIA - ITALY - MALAYSIA - NEW ZEALAND - PANAMA - PHILIPPINES - SINGAPORE - SPAIN - UK - USA - VENEZUELA - VIETNAM

[sales@seaboats.net](mailto:sales@seaboats.net) - [www.seaboats.net](http://www.seaboats.net)

## 500T Crane Barge



### Listing ID - 3963

**Description** 500T Crane barge

**Date** 2021

**Launched**

**Length** 64.65m (212ft 1in)

**Beam** 24.5m (80ft 4in)

**Draft** 2.45m (8ft)

**Location** China

**Broker** Franklin Taylor  
[franklin.taylor@seaboatsbrokers.com](mailto:franklin.taylor@seaboatsbrokers.com)  
+64 27 276 5383

**Price** USD 7.6 million

Built: 2021

LOA: 64.65m

Beam: 24.5m

Depth: 4.9m

Draft: 2.45m

Crane Boom Length: 78m

Main Hook Length: 66m

### **Engine**

Self-sail Main Engine an Qing CSSC: Anqing-Daihatsu / Japan Daihatsu tech) Diesel engine

Power: 1050HP + 1050HP (2 units)

Max Self-sailing Ability: 12 knots

### **Accommodation**

20 beds

### **Crane**

160-kilowatt variable frequency motor\*5

2 aux. hooks

2 main hooks and 1 aux. hook

Main Hook: 2 units

Aux. Hook: 1 unit

### **Main Hook 250t\*2**

Arm Angle 75°

Work Radius(m): 17

Lift Capacity(t): 500

Hoisting height from water surface to under hook(m): 65.75

Arm Angle 70°

Work Radius(m): 22.5

Lift Capacity(t): 400

Hoisting height from water surface to under hook(m): 64

Arm Angle 65°

Work Radius(m): 27.9

Lift Capacity(t): 380

Hoisting height from water surface to under hook(m): 61.8

Arm Angle 60°

Work Radius(m): 33

Lift Capacity(t): 340

Hoisting height from water surface to under hook(m): 59

Arm Angle 55°

Work Radius(m): 38

Lift Capacity(t): 300

Hoisting height from water surface to under hook(m): 56

Arm Angle 50°

Work Radius(m): 42.4

Lift Capacity(t): 240

Hoisting height from water surface to under hook(m): 52.5

Arm Angle 45°

Work Radius(m): 47

Lift Capacity(t): 170

Hoisting height from water surface to under hook(m): 48.6

Arm Angle 40°

Work Radius(m): 50.5

Lift Capacity(t): 130

Hoisting height from water surface to under hook(m): 44.4

Arm Angle 35°

Work Radius(m): 54

Lift Capacity(t): 100

Hoisting height from water surface to under hook(m): 39.8

Arm Angle 30°

Work Radius(m): 57

Lift Capacity(t): 85

Hoisting height from water surface to under hook(m): 35

Arm Angle 25°

Work Radius(m): 60

Lift Capacity(t): 70

Hoisting height from water surface to under hook(m): 30

Arm Angle 20°

Work Radius(m): 62

Lift Capacity(t): 65

Hoisting height from water surface to under hook(m): 24.6

Arm Angle 15°

Work Radius(m): 63.7

Lift Capacity(t): 60

Hoisting height from water surface to under hook(m): 19

Arm Angle 10°

Work Radius(m): 65

Lift Capacity(t): 50

Hoisting height from water surface to under hook(m): 13.5

#### **Aux. Hook 150t\*1**

Arm Angle 75°

Work Radius(m): 20

Lift Capacity(t):150

Hoisting height from water surface to under hook(m): 79.3

Arm Angle 70°

Work Radius(m): 26.6

Lift Capacity(t): 120

Hoisting height from water surface to under hook(m): 77.3

Arm Angle 65°

Work Radius(m): 33

Lift Capacity(t): 120

Hoisting height from water surface to under hook(m): 74.7

Arm Angle 60°

Work Radius(m): 39

Lift Capacity(t): 110

Hoisting height from water surface to under hook(m): 71.5

Arm Angle 55°

Work Radius(m): 44.7

Lift Capacity(t): 110

Hoisting height from water surface to under hook(m): 68

Arm Angle 50°

Work Radius(m): 50

Lift Capacity(t): 100

Hoisting height from water surface to under hook(m): 63.7

Arm Angle 45°

Work Radius(m): 55

Lift Capacity(t): 80

Hoisting height from water surface to under hook(m): 59

Arm Angle 40°

Work Radius(m): 60

Lift Capacity(t): 60

Hoisting height from water surface to under hook(m): 54

Arm Angle 35°

Work Radius(m): 64

Lift Capacity(t): 50

Hoisting height from water surface to under hook(m): 48.7

Arm Angle 30°

Work Radius(m): 67.5

Lift Capacity(t): 40

Hoisting height from water surface to under hook(m): 43

Arm Angle 25°

Work Radius(m): 70.7

Lift Capacity(t): 25

Hoisting height from water surface to under hook(m): 37

Arm Angle 20°

Work Radius(m): 73

Lift Capacity(t): 20

Hoisting height from water surface to under hook(m): 30.6

Arm Angle 15°

Work Radius(m): 75

Lift Capacity(t): 15

Hoisting height from water surface to under hook(m): 24

Arm Angle 10°

Work Radius(m): 77

Lift Capacity(t): 10

Hoisting height from water surface to under hook(m): 17.5

The slewing bearing diameter of crane is 9m.

The starting point of the boom is 7 m from the bow.

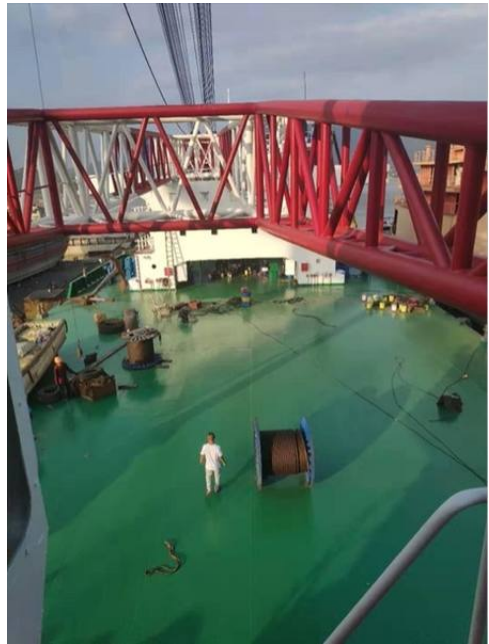
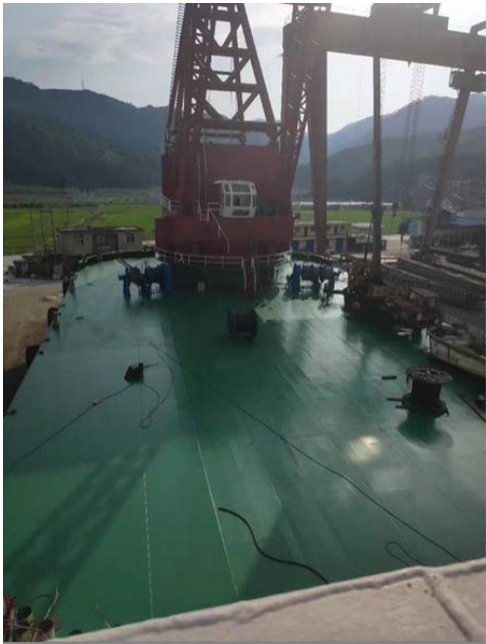
It is 7.5m away from the ship's side.

The starting point of the boom is 6.5m from the deck.

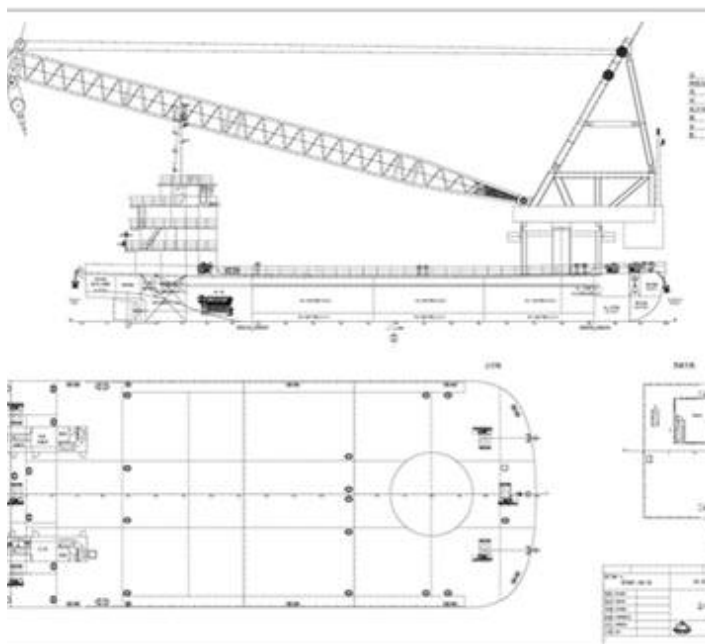
AUX. HOOK length 78 m, main hook length 66 M











The details of all vessels are offered in good faith but we cannot guarantee or warrant the accuracy of this information nor warrant the condition of the vessel. Any buyer should instruct their agents, or their surveyors, to investigate such details as the buyer desires validated. This vessel is offered subject to sale, price change, location or withdrawal without notice.



AUSTRALIA - BULGARIA - INDIA - INDONESIA - ITALY - MALAYSIA - NEW ZEALAND - PANAMA - PHILIPPINES - SINGAPORE - SPAIN - UK - USA - VENEZUELA - VIETNAM