



SEABOATS

MARINE BROKERS WITH A GLOBAL APPROACH

AUSTRALIA - BULGARIA - INDIA - INDONESIA - ITALY - MALAYSIA - NEW ZEALAND - PANAMA - PHILIPPINES - SINGAPORE - SPAIN - UK - USA - VENEZUELA - VIETNAM

sales@seaboats.net - www.seaboats.net

109.69m Multifunctional LCT Transport Barge



Listing ID - 3969

Description 109.69m Multifunctional LCT Transport Barge

Date Launched 2022

Length 109.69m (359ft 10in)

Beam 22m (72ft 2in)

Draft 4.5m (14ft 9in)

Note 9184.700t

Location China

Broker Franklin Taylor
franklin.taylor@seaboatsbrokers.com
+64 27 276 5383

Price USD 3.6 million

276TEU
Built: 2022
Class: China ZC
Flag: China
LOA: 109.69m
LWL: 106.51m
LPP: 104.22m
Width: 22m
Deep: 6.25m
Beam: 22m
Depth: 6.25m
Light Draft: 3.214m

Loaded Draft: 4.5m
Loaded Displacement: 9184.700t
Light Displacement: 2266.796t
Gross Tonnage: 3960
Net Tonnage: 2217
Max Full Load Capacity: 9000t
Main Engine: NINGBO CSI diesel engines two units 1103+1103kw
Max Self Sail Speed: 13kn/h
Speed: 12kn
From the upper deck edge to the first deck edge: 3m
From the first deck to the captain's deck: 3m
Captain's deck to driving deck: 2.40m
Flying deck to compass deck: 2.40m
Upper deck to canopy deck: 2.90m
The rest are built on beam arches: 0.20m

Capacity

Fresh Water Tank (left)
Rib: FR144 FR156
Net volume (m ³): 67.64

Fresh Water Tank (right): FR144 FR156
Rib: FR144 FR156
Net volume (m ³): 67.64

Diesel Tank
Serial Number: 1
Cabin Name: Diesel tank (left)
Rib: FR43 FR52
Net volume (m ³): 34.72

Serial Number: 2
Cabin Name: Diesel tank (left)
Rib: FR43 FR52
Net volume (m ³): 34.72

Serial Number: 3
Cabin Name: Diesel daily cabin (left)
Rib: FR43 FR46
Net volume (m ³): 7.36

Serial Number: 4
Cabin Name: Diesel daily cabin (right)
Rib: FR43 FR46
Net volume (m ³): 7.36

Ballast Water Tank
Serial Number: 1
Cabin Name: Tail ballast tank (left, right)
Rib: FR2 FR23

Net volume (m ³): 499.66×2

Serial Number: 2

Cabin Name: NO.1Bottom ballast tank(left, right)

Rib: FR113 FR144

Net volume (m ³): 207.21/208.06

Serial Number: 3

Cabin Name: NO.2Bottom ballast tank(left, right)

Rib: FR93 FR113

Net volume (m ³): 145.35×2

Serial Number: 4

Cabin Name: NO.3Bottom ballast tank(left, right)

Rib: FR73 FR93

Net volume (m ³): 145.35×2

Serial Number: 5

Cabin Name: NO.4Bottom ballast tank(left, right)

Rib: FR43 FR73

Net volume (m ³): 217.90×2

Serial Number: 6

Cabin Name: First ballast tank

Rib: FR156 First

Net volume (m ³): 296.81

Serial Number: 7

Cabin Name: NO.1regulating water tank(left, right)

Rib: FR113 FR144

Net volume (m ³): 713.64×2

Serial Number: 8

Cabin Name: NO.2regulating water tank(left, right)

Rib: FR93 FR113

Net volume (m ³): 492.09×2

Serial Number: 9

Cabin Name: NO.3regulating water tank(left, right)

Rib: FR73 FR93

Net volume (m ³): 492.09×2

Serial Number: 10

Cabin Name: NO.4regulating water tank(left, right)

Rib: FR43 FR73

Net volume (m ³): 666.04×2

Other Cabins

Serial Number: 1

Cabin Name: Domestic sewage storage tank

Rib: FR46 FR49
Net volume (m 3): 3.70

Serial Number: 2
Cabin Name: Domestic sewage storage cabinet
Rib: FR152+0.180 FR155+0.380
Net volume (m 3): 9.60

Serial Number: 3
Cabin Name: Residual oil tank
Rib: FR40 FR43
Net volume (m 3): 2.55

Serial Number: 4
Cabin Name: Dirty oil tank
Rib: FR40 FR43
Net volume (m 3): 7.64

Serial Number: 5
Cabin Name: Main engine oil circulation tank(left, right)
Rib: FR33 FR37
Net volume (m 3): 2.41×2

Serial Number: 6
Cabin Name: Main engine oil storage tank
Rib: FR30 FR35
Net volume (m 3): 7.27

Power Unit

Host
Model and Quantity: G6300ZC6B 2 units
Rated Power and Speed: 1103kWx500r/min

Thrusters
Paddle type and number of blades: MAU type 4 leaves
Spin Towards: External rotation
Straight Path: 3.05m
Material: Cu3
Connection with propeller shaft: Flat key connection

Gearbox Model: GWC42.45

Main Generator Set
Genset Model and Quantity: CCFJ200J-Y 2 sets
Diesel Model: WP12CD235E201
Output Power and Speed: 235kW×1500r/min
Generator Model: SB-HW4(.D)-200
Rated Power: 200kW

Parking Diesel Generator Sets

Genset Model and Quantity: CCFJ64J-Y 1 set
Diesel Model: WP4CD100E200
Output Power and Speed: 90kWx1500r/min
Generator Model: SB-HW4.(D)-64
Rated Power: 64kW

Accommodation

Crew Quota: 12 people

Aggregate Spacing

Rib Spacing

Tail-FR8: 600mm

FR8-FR144: 640mm

FR144-first: 600mm

Longitudinal Spacing

Double Bottom and Upper Deck: 615mm

Side and Longitudinal Walls: 625/530mm

Spacing of Deck Girder

Deck Stringer: 1230/2460mm

Spacing between side keels

Side Keel: 1230/2460mm

Equipment

Rudder Blade

Number of Rudder Blades: 2 individual

Single Rudder Area: 7.62

Aspect Ratio: 1.50

Balance Ratio: 0.227

Tiller

The diameter of the rudder stock at the tiller is 150mm;

The diameter of the rudder stock at the lower rudder bearing is 170mm;

Servo

The ship adopts 1 hydraulic fork type hydraulic steering gear; nominal torque: 125kN-m; steering angle: $\pm 35^\circ$

Life-saving Equipment

2 Lifeboats: for 12 people

Rescue Boat: 1

2 Self-supporting Formal Inflatable Life Rafts: for 12 people and 2 rope ladders for boarding; there are 6 people throwing inflatable life rafts on the starboard side of the upper deck at the stern (6 person) 1, and take 1 rope ladder.

Life Jackets: 21

Life Jacket Light: 21

Thermal Immersion Suit per person: 14 pieces

Lifebuoys: 10

Self-igniting Light: 3

Buoyant Lifeline: 2

Light and Smoke Signal: 2
Rope Throwers: 4 portable
Pyrotechnic signal equipment
Rocket Parachute Flame Signals: 12
Two-way VHF radiotelephones for life rafts: 3

Fire-Fighting Equipment

Fire Hydrant: 19
Hose Box: 19
Hose and water gun
Fire Extinguisher
Carbon Dioxide Cylinders: 1 set
Firefighter Equipment: 2
EEBD: 7 sets

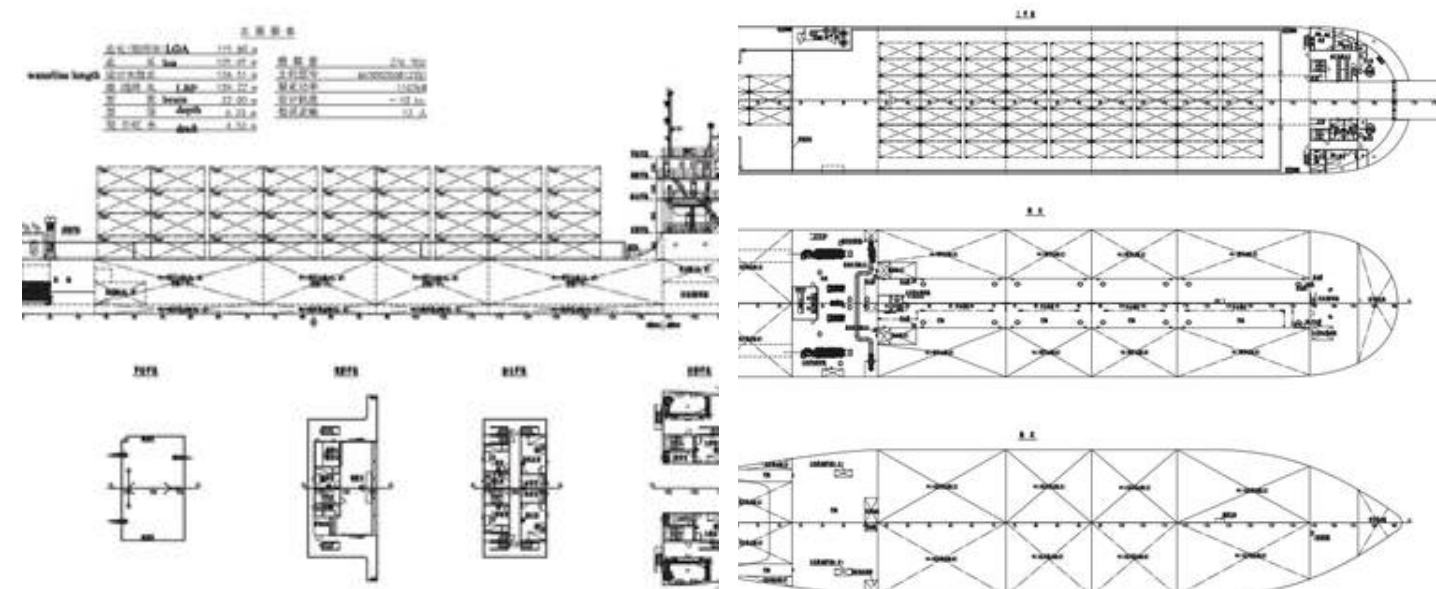
Construction

Metal door
Metal windows
Hatch covers and manhole covers
Cabin outfitting part

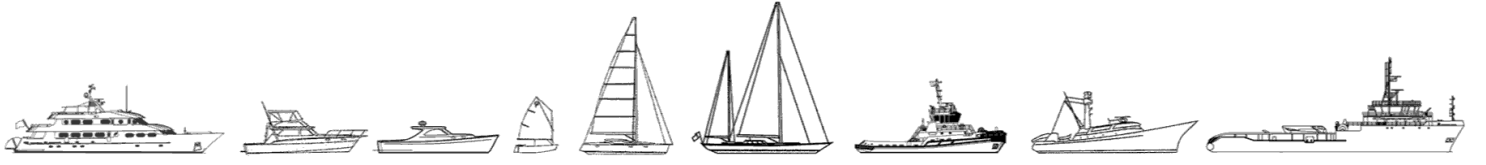
Mechanical Equipment List

Host 1 Model: G6300ZC6B
High elastic coupling
Marine reduction gearbox
Main diesel generator set
Parking diesel generator sets
Bilge fire main pump
Ballast pump
Emergency fire pump set
Main engine seawater backup pump
Main engine oil backup pump
Gearbox oil backup pump
Diesel transfer pump
Sump oil transfer pump
Domestic sewage crushing pump
Bilge jet pump
Oil sewage separator
Domestic sewage treatment device
Oil strainer
Stationary
Whistle and miscellaneous air cylinders
Air compressor (air cooling)
Assembled fresh water pressure tank
Assembled seawater pressure tank
Electric heating hot water tank
Pneumatic quick closing valve control box
Foam fire extinguisher
Dry powder fire extinguisher
Large foam fire extinguisher

- Potable air foam gun
- Cabin emergency escape breathing apparatus
- Turntable vise
- Straight grinder
- Bench drill press
- Chain Hoist
- Dry silencer
- Marine flange cast steel sea valve
- Marine flange cast steel gate valve
- Suction coarse water filter
- Marine flange cast steel sea valve
- Marine flange cast steel gate valve
- Suction coarse water filter
- Shaft accessories
- Hydraulic steering gear



The details of all vessels are offered in good faith but we cannot guarantee or warrant the accuracy of this information nor warrant the condition of the vessel. Any buyer should instruct their agents, or their surveyors, to investigate such details as the buyer desires validated. This vessel is offered subject to sale, price change, location or withdrawal without notice.



AUSTRALIA - BULGARIA - INDIA - INDONESIA - ITALY - MALAYSIA - NEW ZEALAND - PANAMA - PHILIPPINES - SINGAPORE - SPAIN - UK - USA - VENEZUELA - VIETNAM