



SEABOATS

MARINE BROKERS WITH A GLOBAL APPROACH

AUSTRALIA - BULGARIA - INDIA - INDONESIA - ITALY - MALAYSIA - NEW ZEALAND - PANAMA - PHILIPPINES - SINGAPORE - SPAIN - UK - USA - VENEZUELA - VIETNAM

sales@seaboats.net - www.seaboats.net

28.85m Offshore Tug / Supply Ship For Charter



Listing ID - 4024

Description	28.85m Offshore Tug / Supply Ship For Charter
Date Launched	1992
Length	28.85m
Beam	8.70m
Draft	4.70m
Broker	Richard Pierrepont richard.pierrepont@seaboatsbrokers.com +44 7798 607 323
Price	POA

Built: 1992, Spain

Hull material: Steel

Flag: Spain

Class Society and Notation: RINA FIFI Tug Unr. Nav.

PRINCIPLE DIMENSIONS

Length Overall: 28.85m

Breadth: 8.70m

Draft: 4.70m

GT: 265 tons

MACHINERY & PROPULSION

Total power output: 2727 bhp

Main Engine: 1 x Bergen Kmr9

Main Propulsion System: Single screw

Propellers: 1
Speed maximum: 12.5 knots
Speed cruising: 10.5 knots

CARGO AND TANKS CAPACITIES

Deck Cargo (tons): 40
Deck Area: 60 m²
Fuel tanks capacity: 152 m³
Fresh Water tanks capacity: 24 m³

ADDITIONAL INFORMATION

OTHER DETAILS

Deck cargo: 40 tons - Dangerous Goods
Bollard pull: 43 Tons
Lubricant oil: 11 m³
Navigation area A1+A2+A3

WORK EQUIPMENT

Crane / Hydraulic crane 2800 kg at 2.0 m / 750 kg at 7,0 m
1 towing hook and stern roller for anchor handling operations
Towing winch / Double hydraulic towing winch drums with 650 m of steel wire – diameter 44 mm

ACCOMMODATION

Berth: 4 cabins x 2 persons; 2 cabins x 1 persons

MACHINERY

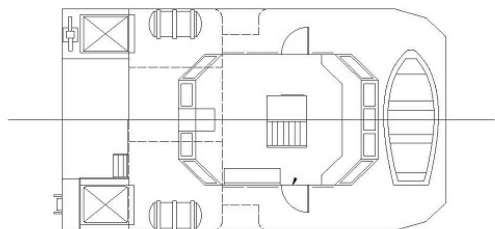
Auxiliaries: 2 Pegasso 90 kv each; 1 Iveco 220 HP hydraulic system.
Steering and propulsion system:
Mobil nozzle with variable pitch propeller and flap rudder system
Bow thruster / 250 CV
Manoeuvring control positions / aft and forward (bridge)
Water Treatment / 3000 liters/24 h
Gasoil:
1 pump of 10 m³/h at 20 m height and
1 pump of 60 m³/h at 50 m height
Fresh water pump: 1 pump of 60 m³ / h at 50 m height

FIRE FIGHTING SYSTEM

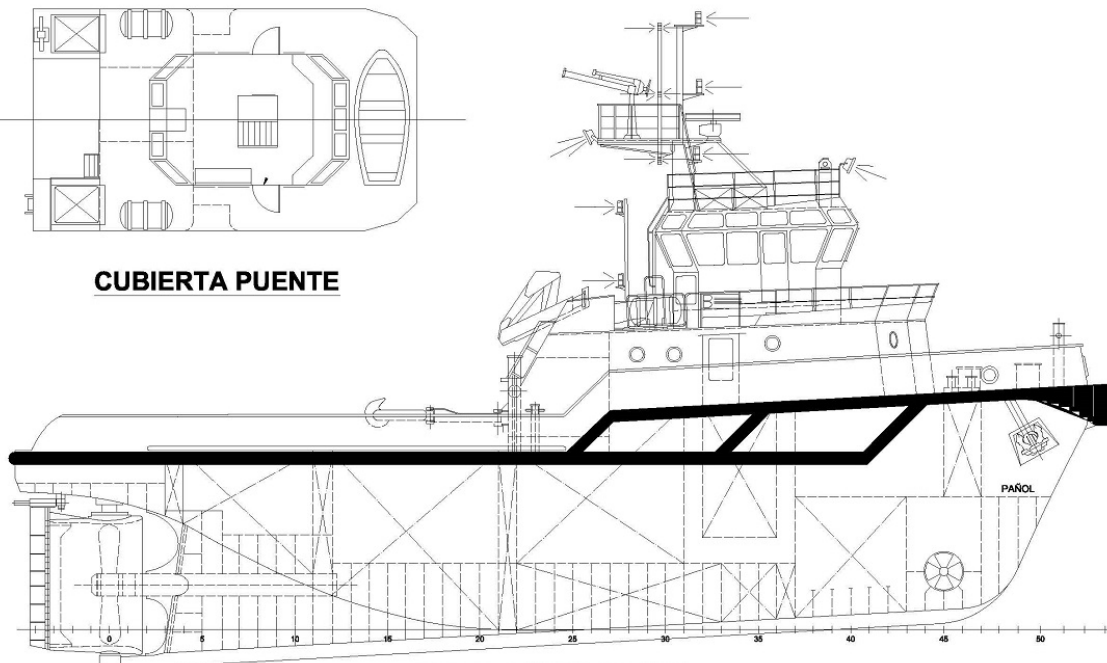
1 pump 800 m³/h at 140 m
Pressure: 7 bars
Monitors 2 monitors
Water spray system forecastle Yes

LIFE SAVING EQUIPMENT

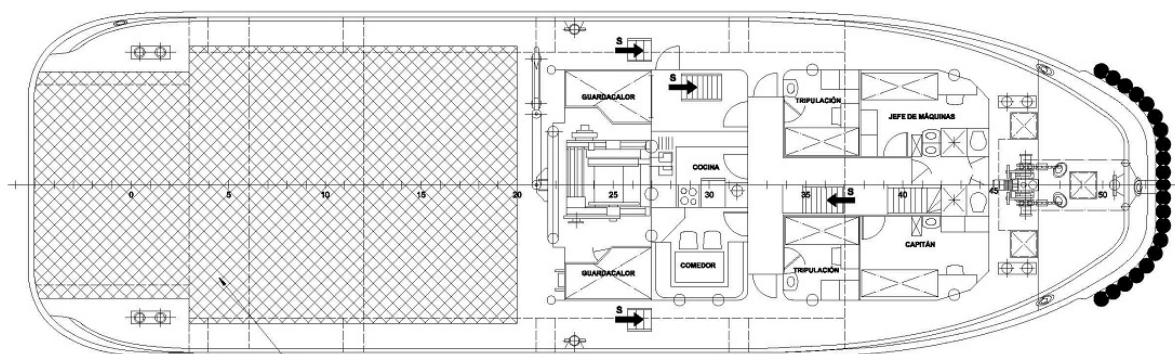
Rescue boat: Duarry Solas SR 5. 15 HP
12 x Life jacket
8 x Survival suit
Life Raft: 2 Viking 8 persons each



CUBIERTA PUENTE

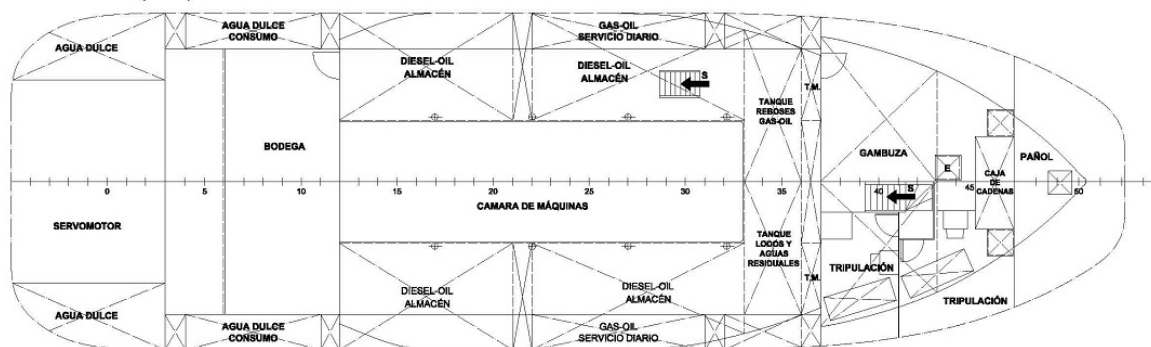


VISTA LONGITUDINAL

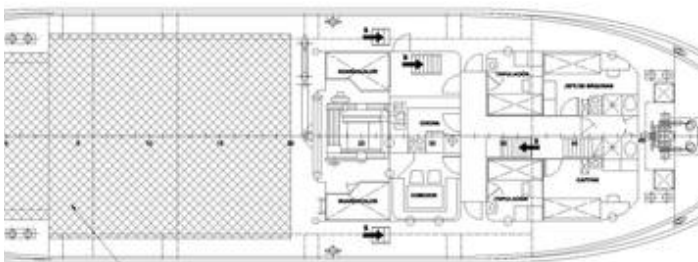
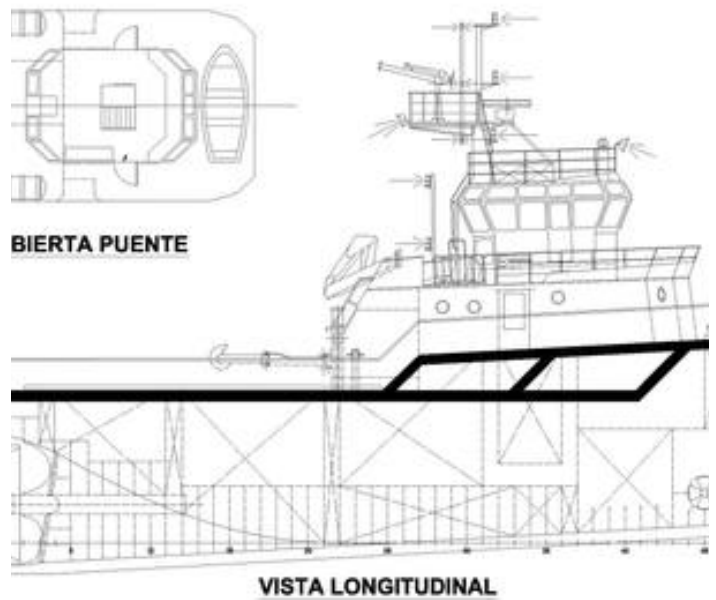


CUBIERTA PRINCIPAL

ZONA PARA ESTIBA DE LA CUBERTADA
(84 m²)

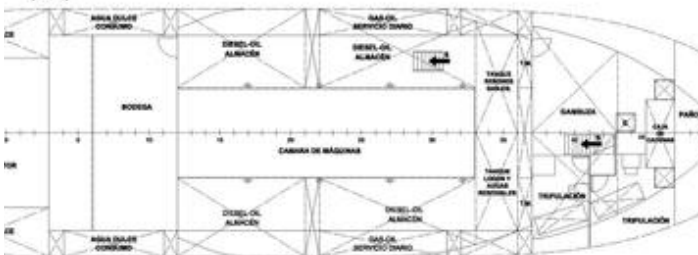


DOBLE FONDO



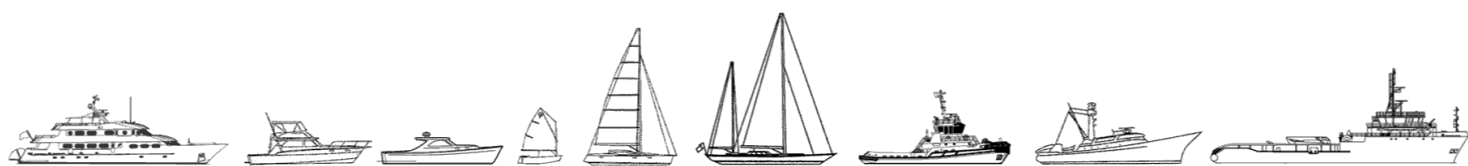
CUBIERTA PRINCIPAL

LA ESTIBA DE LA CUBIERTA
(54 m²)



DOBLE FONDO

The details of all vessels are offered in good faith but we cannot guarantee or warrant the accuracy of this information nor warrant the condition of the vessel. Any buyer should instruct their agents, or their surveyors, to investigate such details as the buyer desires validated. This vessel is offered subject to sale, price change, location or withdrawal without notice.



AUSTRALIA - BULGARIA - INDIA - INDONESIA - ITALY - MALAYSIA - NEW ZEALAND - PANAMA - PHILIPPINES - SINGAPORE - SPAIN - UK - USA - VENEZUELA - VIETNAM