



SEABOATS

MARINE BROKERS WITH A GLOBAL APPROACH

AUSTRALIA - BULGARIA - INDIA - INDONESIA - ITALY - MALAYSIA - NEW ZEALAND - PANAMA - PHILIPPINES - SINGAPORE - SPAIN - UK - USA - VENEZUELA - VIETNAM

sales@seaboats.net - www.seaboats.net

SOLD - 25m Multi Cat



Listing ID - 4067

Description 25m Multicat

Date 2017

Launched

Length 25m (82ft)

Beam 9.8m (32ft)

Draft 2.3m (7ft 6in)

Location Istanbul , Turkey

Broker John Kearns
john.kearns@seaboatsbrokers.com
+64 21 400 805

25m Multi Cat built 2017 in Turkey to Bureau Veritas class with *Hull * Mach Tug/Special Service, Work Boat Coastal Area notation. Powered by twin Caterpillar C18 ACERT engines developing 715 hp each, driving two fixed pitch propellers in nozzles and providing 20 TBP.

Designed to undertake multiple roles, including towing, anchor handling, harbour maintenance, marine construction and dredge support. High capacity knuckle boom crane, 20 t A Frame, 20 t double drum towing winch, towing pins and bow and stern rollers. Fully air conditioned accommodation including crew mess, galley and 3 cabins for six persons.

Main Particulars

Length Overall: 25m

Breadth, moulded: 9.8m

Depth: 3.4m

Draft: 2.3m

GT (ITC 69): 198

Deck Load: 200 tonnes

Free Deck Area: 110 m²

Deck Strength: 5 t/m²

Performance

Speed: 10 knots

Bollard Pull: 20 TBP

Machinery

Main Engine: 2x CAT C18 Acert 715 BHP @ 2100 RPM (1430 BHP total)

Gearboxes: 2x ZF W650 with 5.138:1 reduction

Generators: 2x Perkins 6TWGM/1006, Stamford UCM 274 H 110 kW

Propellers: 2x Fixed Pitch Propellers in nozzles

Bow thruster: YMV 55 kW

Deck Equipment

Knuckle Crane: Orhun Mak, 140 ton/m, 45 t @ 3m, 5 t @ 18m

Towing Winch: YMV, Double Drum 20 tons

A-Frame: YMV 20 tons

Tow Pin: DATA DTP 8H 52 tonne @ 15 degrees

Tow Hook: DATA DTH 30-60 SWL 300KN

2x Stern and Bow Rollers

2x Capstan/Anchor Windlass

Tank Capacities

Fuel: 68 m³

Service Tanks: 8.75 m³

Fresh Water: 62 m³

Oily Water Tank: 25 m³

Ballast Tanks: 68 m³

Sewage: 11.8 m³

Sludge: 3.52 m³

Waste Oil: 3.52 m³

Pumps

Primary Diesel Transfer Pump: 40 m³/hr @ 20m head

Secondary Diesel Transfer Pump: 10 m³/hr @ 20m head

Fresh Water Transfer Pump: 50 m³/hr @ 20m head

Electronics

2 x Raymarine C127 Multi-Function 12" LCD Displays

1 x Raymarine 48 mile Radar

1 x Raymarine RayStar 130 GPS Receiver

1 x Raymarine Depth Transducer

1 x Icom IC-M423 DSC Class D VHF Transceiver

1 x JRC NCR-333 Navtex

1 x Bridge Watch Alarm System

1 x Kannard Auto GPS EPIRB

1 x Zenitel ETB-5 Intercom

2 x Icom IC-M35 Handheld VHF Radios

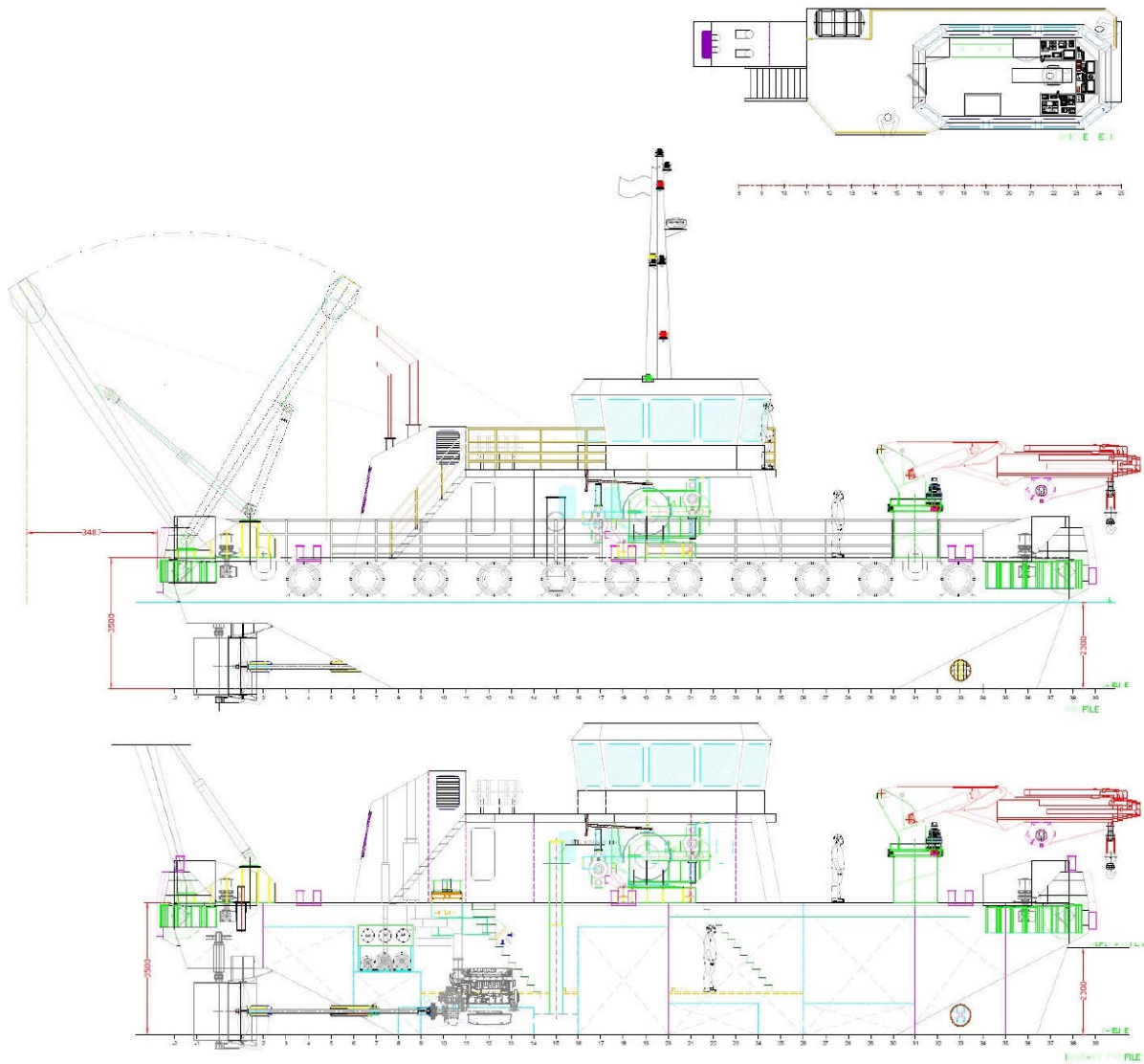
Accommodation:

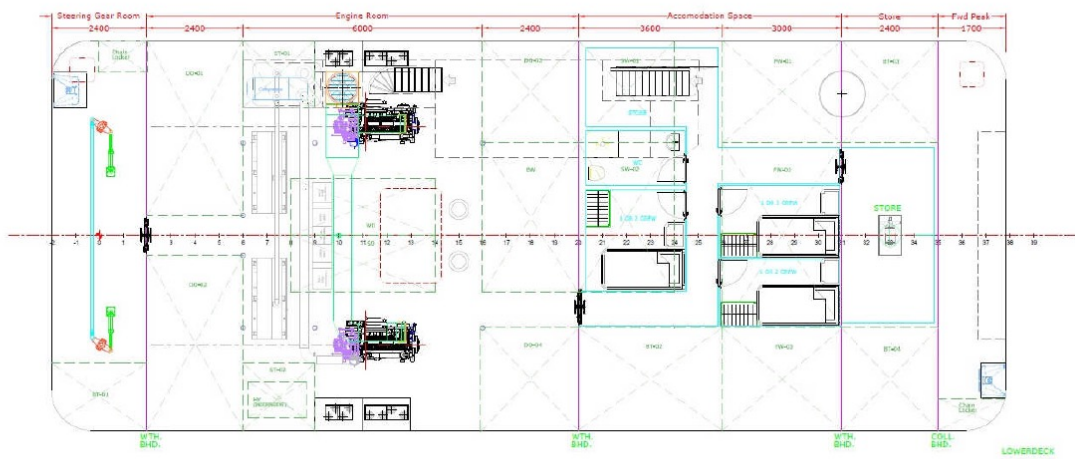
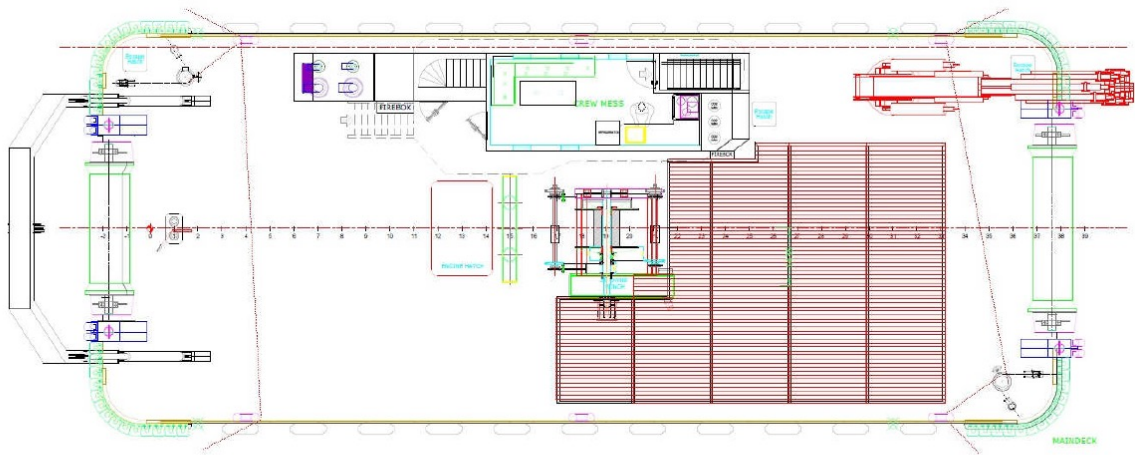
Fully air-conditioned

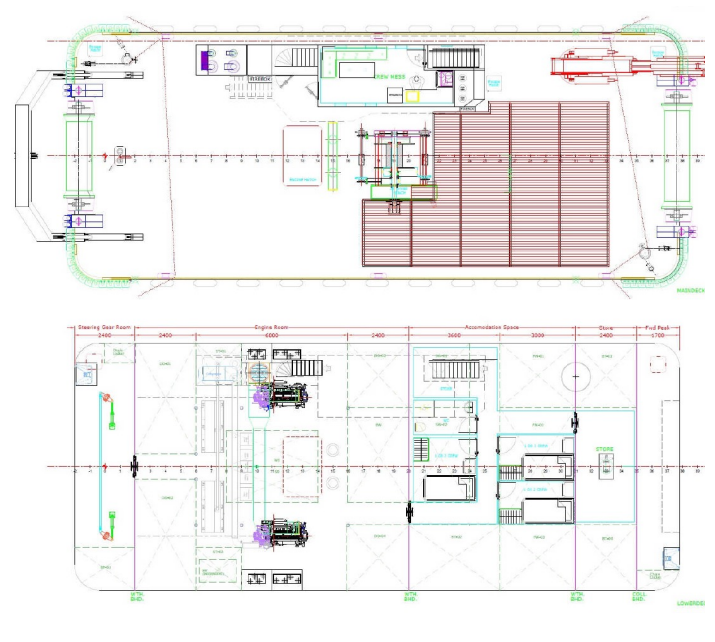
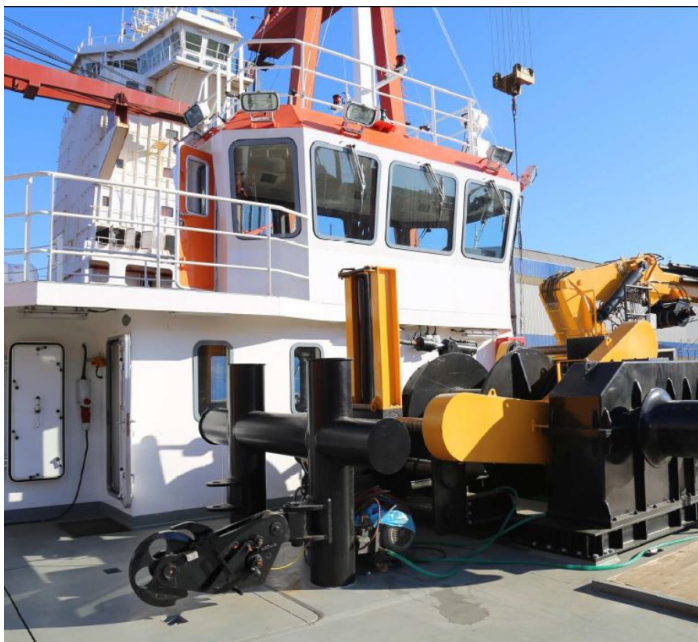
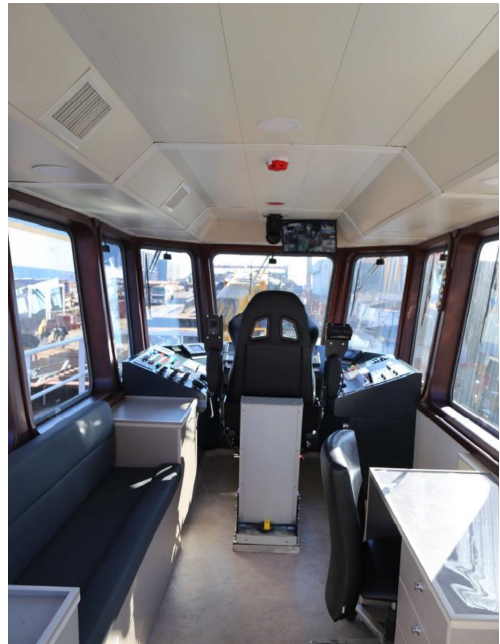
6 Persons in 3 cabins

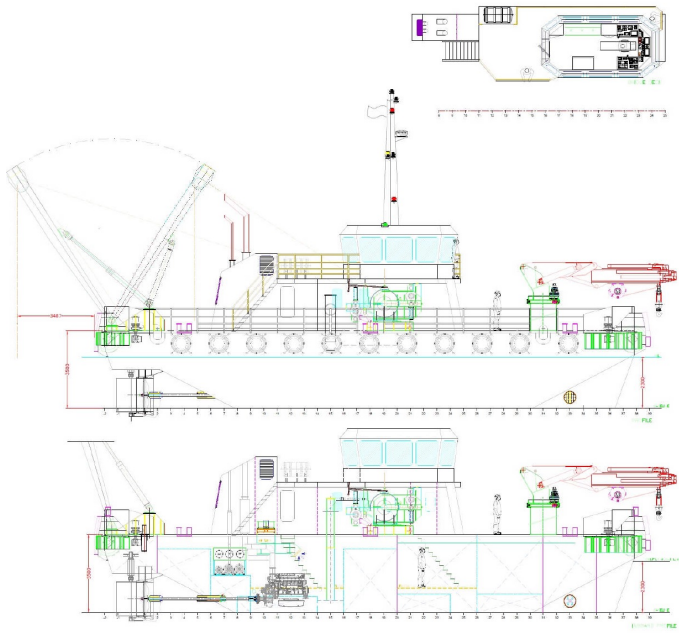
Crew Mess

Galley

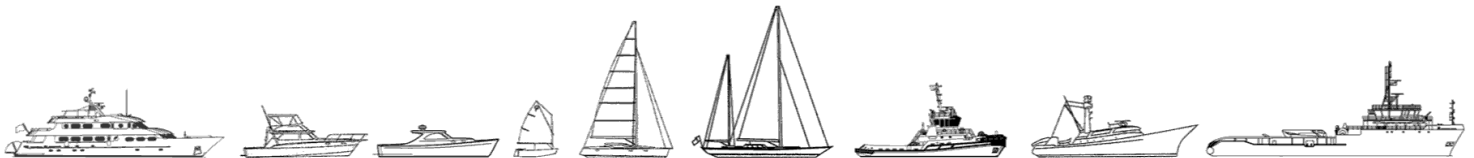








The details of all vessels are offered in good faith but we cannot guarantee or warrant the accuracy of this information nor warrant the condition of the vessel. Any buyer should instruct their agents, or their surveyors, to investigate such details as the buyer desires validated. This vessel is offered subject to sale, price change, location or withdrawal without notice.



AUSTRALIA - BULGARIA - INDIA - INDONESIA - ITALY - MALAYSIA - NEW ZEALAND - PANAMA - PHILIPPINES - SINGAPORE - SPAIN - UK - USA - VENEZUELA - VIETNAM