



# SEABOATS

MARINE BROKERS WITH A GLOBAL APPROACH

AUSTRALIA - BULGARIA - INDIA - INDONESIA - ITALY - MALAYSIA - NEW ZEALAND - PANAMA - PHILIPPINES - SINGAPORE - SPAIN - UK - USA - VENEZUELA - VIETNAM

[sales@seaboats.net](mailto:sales@seaboats.net) - [www.seaboats.net](http://www.seaboats.net)

## NEW BUILD - 13.3m High Speed Patrol Boat



### Listing ID - 406742

**Description** 13.3m High Speed Patrol Boat

**Date** BUILT TO ORDER

**Launched**

**Length** 13.325m

**Beam** 4.00m

**Draft** 1.70m

**Note** 12T approx.

**Location** ex Factory, China

**Broker** Geoff Fraser  
[geoff.fraser@seaboats.net](mailto:geoff.fraser@seaboats.net)  
+64 21 61 222 5

**Price** POA

### DESIGN PURPOSE

This high speed patrol/military boat is designed for below multi-mission/purposes:

- Anti-piracy, anti- smuggling and anti-drug trafficking operations.
- Search and Rescue operation in inland, offshore and coastal areas.
- Fishery protection, intercepting and patrol in and around ports and coastal areas.
- Disaster Relief operations.
- Patrol in inshore and offshore area.
- Surveillance.

## TECHNICAL DATA

LOA: 13.325m

Mold Length: 12.0m

Beam (max): 4.0m

Depth: 1.70 m

Draft: ^0.7 m

Displacement (Full Load): ^12 tonnes

Hull Material: FRP (Kevlar + Vinyl ester)

Boat Type: mono-hull deep-V form

Passenger Capacity: 6-8 persons

Cruising Range: 250 nautical miles

Mas Speed: 40 knots

Stern Drive: 2 X HJ364

## **Power System**

Engine: 2X MAN R6-730/537KW

Flexible Shaft Control Unit

Hydraulic Control System

Engine Speed Indicator

Oil Pressure Gauge

Water Thermometer

Voltmeter

Ammeter

Fuel Consumption Indicator

## **Anchor Gear**

Tiller Telltale

Anchor Gear

Electronic Anchor

Electrical Windlass

Maxwell High Holding Power Anchor

### **Towing & Mooring Units**

Stainless Steel Mooring Unit

Mooring Cleat

Ridding Bitt

Side Chock

Three Standard Braided Polyester Nylon Rope

### **Control System**

Main Bridge

Steering Wheel

Electric Flexible Shaft Control Unit

Hydraulic System

HJ Propulsion Control Unit

### **Survival & Fire Fighting Apparatus**

Lifeline

Life Vest

Parachute Distress Rocket Signal

Red Hand Flare

Orange Smoke Signal

### **Cabin Insulation System**

Extra-fine Glass Wool Thermal-protective Coating

Fire-proof Insulation Spacer Layer

### **Deck Fitting Features**

Deck Fittings

Stainless Steel Railing

Flagpole

stern light Pole

Stainless Steel Handrail

Weather-tight Back/Side Door

Engine Cabin Shutter

Wheelhouse Multi-functional Skylight

Galley/Toilet Multi-functional Skylight

Crew Lounge Multi-functional Skylight

### **Cabin Features**

Bridge

chart Table

Tool Box

Twin Soft Damping Seat: 5

Single Bed in Rest room: 2

Bed Stand

Cabinet

Dish Washing Pool

induction cooker

Patented Toilet Device

### **Electrical & Electric System**

Generator

Distribution Panel

Air Conditioner

Sea Water Pump

Sea Water Filter

Pump Controller

Fan-coil Unit

Cabin Heat Insulation

### **Lighting System**

Cabin Lighting: LED Lamp

Instrument Lighting

Engine-room Lighting: LED Lamp

### **Communication System**

VHF Wireless Telephone

Walkie-talkie

Internal & External Broadcast System

### **Navigation System**

Radar

Magnetic Compass

Military Binoculars

## **GENERAL ARRANGEMENT**

### **Side View**



KB 1330\_GA1.jpg

Main Deck

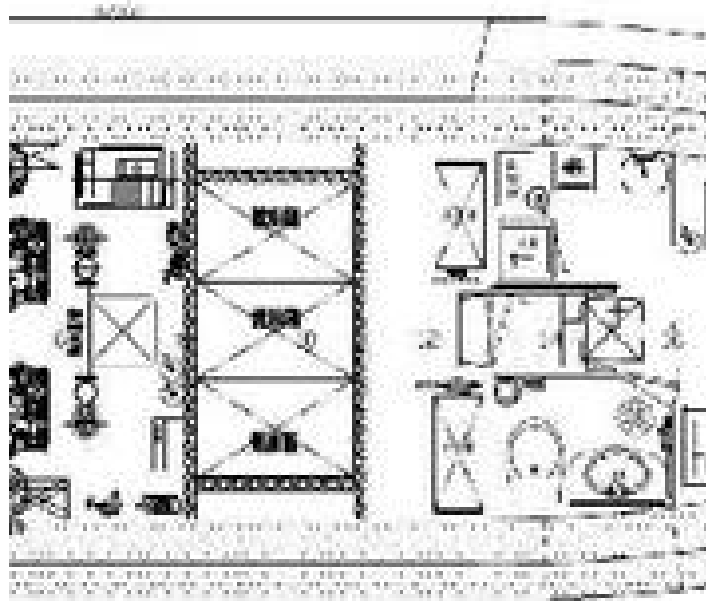
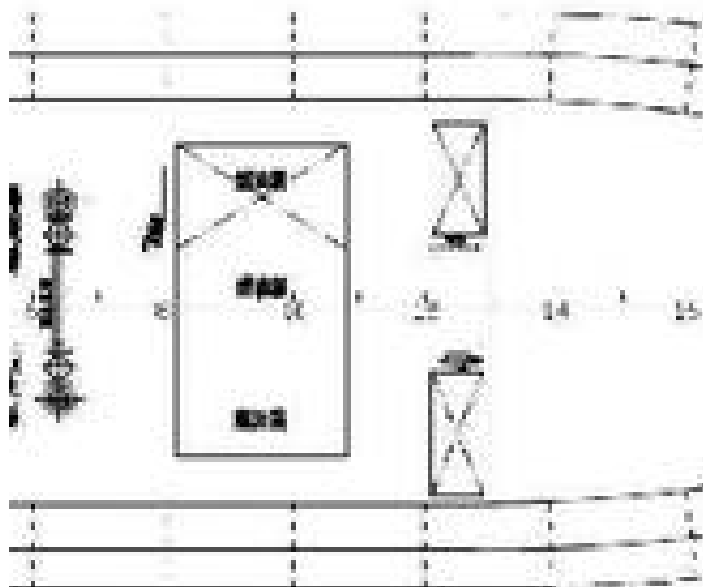
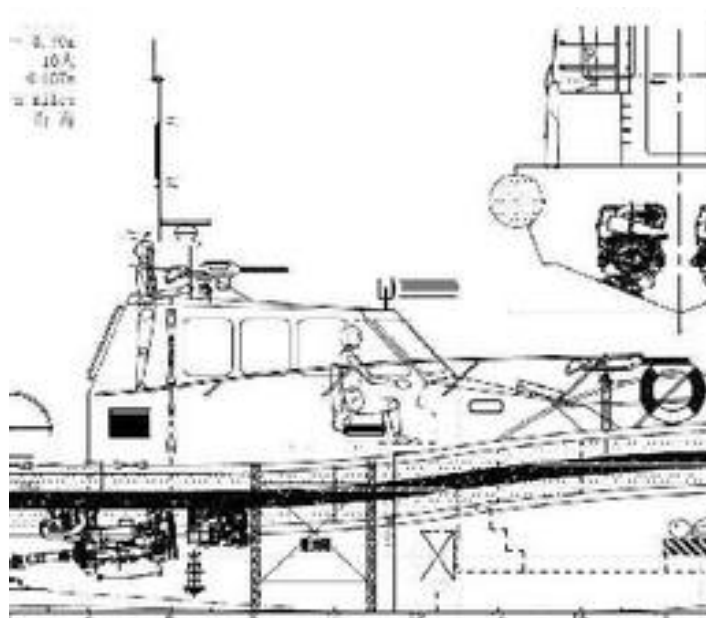


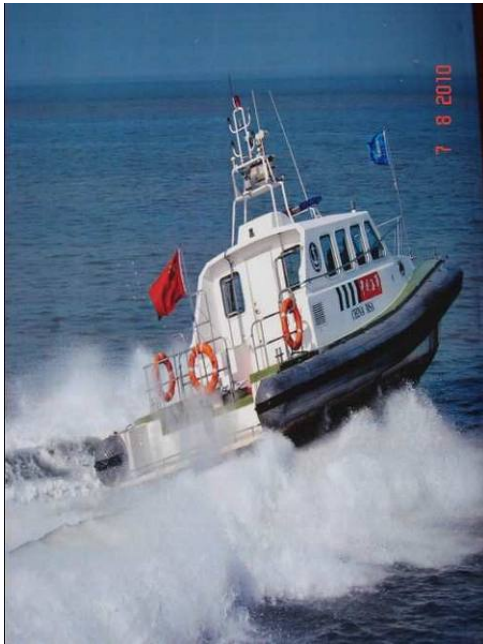
KB 1330\_GA2.jpg

Lower Deck

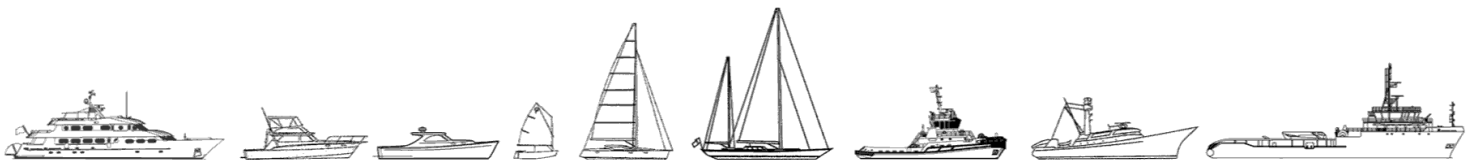


KB 1330\_GA3.jpg





The details of all vessels are offered in good faith but we cannot guarantee or warrant the accuracy of this information nor warrant the condition of the vessel. Any buyer should instruct their agents, or their surveyors, to investigate such details as the buyer desires validated. This vessel is offered subject to sale, price change, location or withdrawal without notice.



AUSTRALIA - BULGARIA - INDIA - INDONESIA - ITALY - MALAYSIA - NEW ZEALAND - PANAMA - PHILIPPINES - SINGAPORE - SPAIN - UK - USA - VENEZUELA - VIETNAM