



SEABOATS

MARINE BROKERS WITH A GLOBAL APPROACH

AUSTRALIA - BULGARIA - INDIA - INDONESIA - ITALY - MALAYSIA - NEW ZEALAND - PANAMA - PHILIPPINES - SINGAPORE - SPAIN - UK - USA - VENEZUELA - VIETNAM

sales@seaboats.net - www.seaboats.net

NEW 9.2m Oil Spill Response Workboat



Listing ID - 4091

Description Oil Spill Response Workboat

Date 2017

Launched

Length 9.2m (30ft 2in)

Beam 3m (9ft 10in)

Draft 0.8 (2ft 7in)

Location Portugal

Broker Richard Pierrepont
richard.pierrepont@seaboatsbrokers.com
+44 7798 607 323

Price 330,000 EUR

Designed and developed by engineering teams from Portugal, England, USA and Norway and built at Peniche Shipyard.

This is the first workboat the company has produced for oil spill response.

It is a special workboat, equipped with a controllable pitch propeller (CPP). This system can deliver high-speed and also to the required Bollard Pull to tow oil containment booms (up to 3 ton)

The workboat was built to achieve much lower noise and vibration levels.

Type of Vessel: Oil Spill Response Workboat

Classification: comply with DNV High Speed Light Craft rules

Port of registry: Peniche

Flag: Portuguese

Owner: SWB

Designer: Filipe Duarte

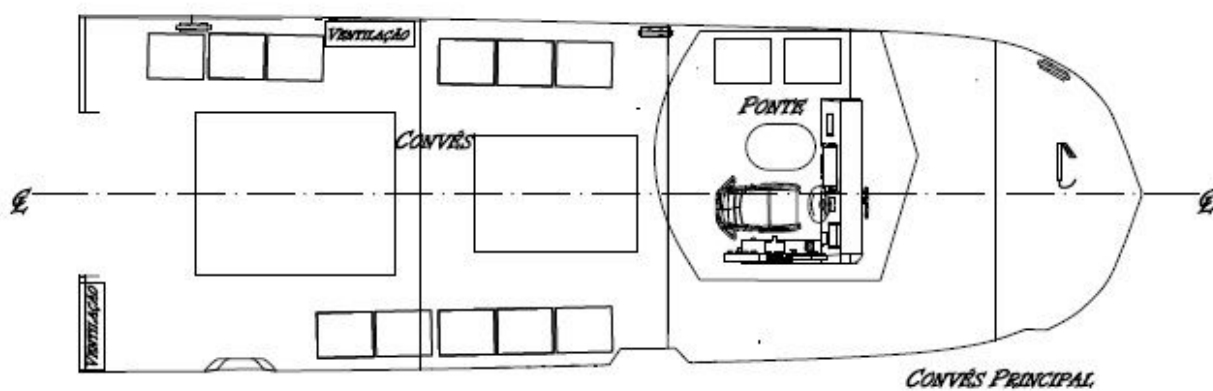
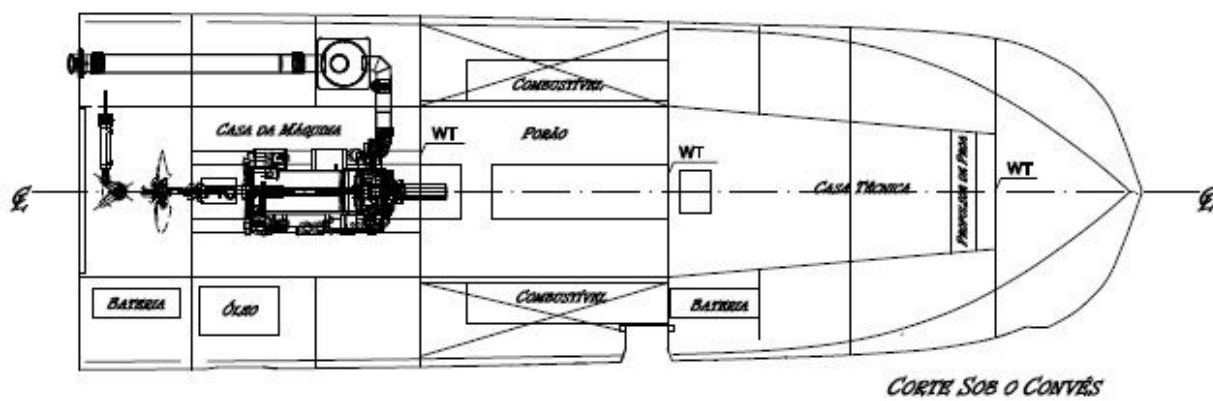
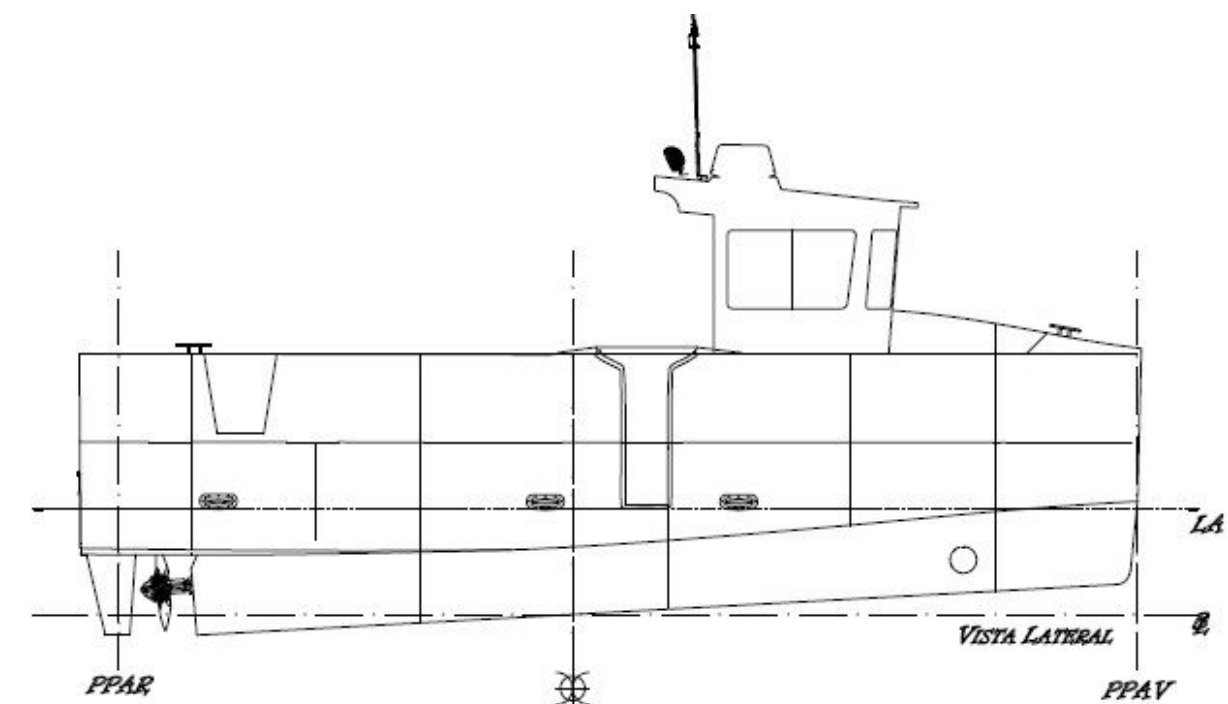
CAD software: Rhinoceros

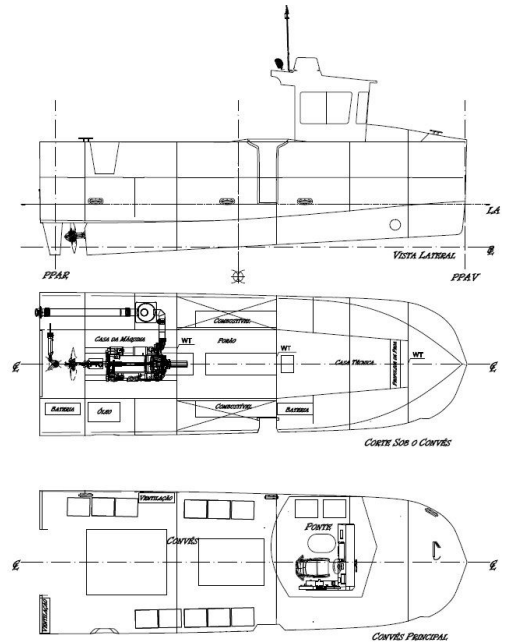
Builder:SWB
Hull construction material:Composites (Glass/Carbon Fiber)
Superstructure construction material: (Glass)
Deck construction material: (Glass/Carbon Fiber)
Length overall:9,2m
Length waterline:2,95m
Length between perpendiculars:8,84
Beam:3m
Draught:0,8m
Depth:1,4m
Displacement: 9ton (full load)
Main engine/s: Volvo D6 370hp
Gearbox: ZFHS80IVE
Propulsion:CPP
Side thruster/s: SH160/215T-U10
Steering system: Proportional
Maximum speed: up to 20 knots
Cruising speed: 12 knots
Range:250nm
Batteries:Victron AGM

Electronics supplied by:Raymarine
Radar/s: Raymarine RD418D
Depth sounder/s: B744V
Radio/s: RAY50
Autopilot: Raymarine T70162 P70R - ACU-400
GPS: Raymarine RS130
Plotters: Raymarine eS97 GPS
Alarm system/s:Auto Marine Dijoser

Paints/coatings:International (Polyurethane)
Windows:Houdinidi Lite Clamp
Seating:Scott Seat with Suspension and flip-up seats
Interior designer:Luís Ribeiro

Fuel capacity:670l
Crew:1
Passengers:11





The details of all vessels are offered in good faith but we cannot guarantee or warrant the accuracy of this information nor warrant the condition of the vessel. Any buyer should instruct their agents, or their surveyors, to investigate such details as the buyer desires validated. This vessel is offered subject to sale, price change, location or withdrawal without notice.

