



# SEA BOATS

MARINE BROKERS WITH A GLOBAL APPROACH

AUSTRALIA - BULGARIA - INDIA - INDONESIA - ITALY - MALAYSIA - NEW ZEALAND - PANAMA - PHILIPPINES - SINGAPORE - SPAIN - UK - USA - VENEZUELA - VIETNAM

[sales@seaboats.net](mailto:sales@seaboats.net) - [www.seaboats.net](http://www.seaboats.net)

## NEW BUILD - Houseboat HB 39



### Listing ID - 4118

**Description** NEW BUILD - Houseboat HB 39

**Date** Built to Order

**Launched**

**Length** 11.98m (39ft 3in)

**Beam** 4.5m (14ft 9in)

**Location** ex factory, Poland

**Broker** Richard Pierrepont  
[richard.pierrepont@seaboatsbrokers.com](mailto:richard.pierrepont@seaboatsbrokers.com)  
+44 7798 607 323

**Price** POA

The **HOLIDAY BOAT** production facility is staffed by a group of experienced specialist who design and create technologically advanced commercial catamarans. Our vessels' design reaches far into the future, it is ageless and safe to use by our clients and their guests. Our catamarans are the only vessels of its kind to positively respond to waves that exceed 0.7 m.

### The highest quality of materials

We use only the highest grade materials to build our catamarans to guarantee many years of durability and safety for users. At the same time it is luxury that is on our minds. Sofas are made of a specialist marine-class leatherette and water resistant plywood. The bar counter tops are made of "Stargate" granite. Glazing is made of polymethacrylate. The glazing is fitted with UV and IR filters thanks to which the vessel interior does not get heated by the solar radiation in the summer.

### International experience

Our products have been approved for sale in all of the European Union countries, they meet all the necessary standards, and have been awarded various certificates and prizes. All of the above has turned the Holiday Boat into a

brand recognisable not only in Poland but in Europe as well

## **DESIGN PROCESS**

Our catamarans boast significant transverse stability. While sailing one of the hulls is lifted above the water surface which in turn reduces hydrodynamic resistance and helps generate higher velocity than single-hull vessels of comparable size. Lack of keel reduces draughts which renders sailing on shallow waters possible. Twin-hull vessels are more resistant to capsize.

## **Personalised approach**

We provide every customer personalised attention which translates into the highest quality of service. We value opportunity to develop, therefore we approach every project individually to enable us at Holiday Boat meet expectations of every customer.

## **Long-standing experience**

We have been in the business of designing and building of catamarans for a number of years. We gain experience every single day. And that makes us a team of professionals passionate about sailing, particularly on catamarans.

## **Details**

Area: 93 sq.m.

On Board 6 kW Power generator (option)

Automatic Heating

Automatic Air-conditioning (option)

Automatic Ventilation

Two Bedrooms (3 bedrooms option)

Combined kitchen - living area

Bathroom

Teak Composite Floors

Triple - glazing with aluminum frames

Burglar - proof reflex grey glass

## **The Houseboat Specification**

Length: 11.98m

Width: 4.5m

Height: 4.0m

Height Inside the cabin: 2.3m

Area: 93,00 sqm

Lounge

Kitchen

Anchor

Alu-hull weight max: 2.5t

Draught: 0.55m

Displacement: 10t

## **Containers / Tanks**

Fuel: 250 L

Water: 400 L

Grey Water: 300 L

Septic Tank: 400 L

Electric Engine: 107 HP (option)

Petrol Engine: 40 - 80 HP (option)

All tanks have indicator and fill up detector

-plastic water tank with valves - 75L

-aluminum septic tank with valves - 400L

-plastic fuel tank with valves - 140L

### **Systems on the houseboat**

Main Batteries: 360 Ah

Battery Charger: 40 A

Electrical System: 24 V / 230V

Socket for on-land power supply: 230 V

Automatic Electric Bilge Pumps

Automatic Electric Water Pumps

Toilet with a container

External Signal Lights

Interior Lights

Fuel System

Water System

Toilet System

Heating System

### **Other Equipment**

Furniture

Rails Inox

Umbrella (option)

Sunde (Option)

Manual Lift Anchor

Microwave Oven

Oven

Fridge - Freezer (49 L)

Dishwasher (option)

Boiler 60 L / 1200 Watts

Wash Basin with faucet

Electrical Ventilation

TV 32"

Audio and Video System

Solar System (Option)

### **Life - Rescue Equipment**

Two Life - Rings with Light Buoy

Life Jacket 8 pcs

12red Flares

### **Sundeck**

Inside Floor - waterproof laminated plywood + composite hpl teak

Diamond aluminium roof

Laminated steering cockpit with connection and junction box, lights panel (white led light, colour led lights)

Sound Panel (9x speaker, Radio)

### **Monitoring System**

4x camera with move detectors + recorder

### **Power Feed**

Preparation to outboard engine installation - 150hp, steering wheel  
Hotel battery, Start battery, Charging system  
Backup Camera

### **Sanitary**

Central heating system installation  
Cold water installation, with water pump and water level indicator  
Toilet water installation, with water pump and water level indicator  
Sewage Tank System, with pump and waste level indicator  
Toilet: WC, running water, wash-bowl  
Fridge running water, sink, bar  
Heating system and cooling system (option)

Our catamaran is equipped with a sun deck which comes with seats to enable the passengers appreciate the views even more. As the only company in Europe we boast a certificate which permits 25 persons on a 12 m vessel which makes it a fantastic venue for special occasion and business events.

### **Catamaran also in winter**

No need to wait for summer to organise a cruise on our catamaran. On board the vessel is 6 kW heating system. That means that with the external temperature of 0 degrees Celsius the temperature inside the cabin can reach up to 25 degrees Celsius.

### **Comfort of sailing**

We've made sure that comfort of sailing on our vessels is at the highest level. We offer, among other elements, the following: sound-proof partition walls, professional sound system, LED and laser discotheque lighting, remote-controlled colour night lights - both in the cabin and on the sides. On our vessels one may prepare and serve meals.

### **Electric Drive**

Since 2011 we have been designing and building catamarans equipped with electric drives. It is an excellent alternative to combustion-engine drives. A very small exhaust fume emission, significant noise reduction and lower costs are only a few from a long list of advantages of this type of drive.

### **Learn more**

The hybrid part of the drive may be charged from solar panels or power generators. Detailed information are available from your local dealer.

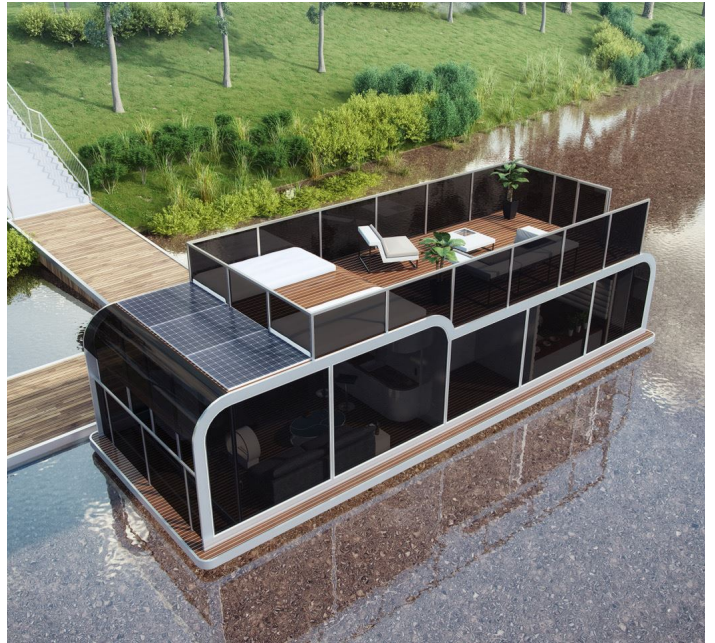
### **Hybrid Catamaran**

For the past six years we have been specialising in hybrid catamarans - they combine two types of drive to move one catamaran. Most frequently a hybrid drive is a combination of a combustion engine and an electric motor. The engine and motor are capable of working alternately or simultaneously - depending on the user's preferences. The advantage of hybrid systems consists in decreased fuel consumption, lower emission of exhaust fumes and noise.

### **Learn More**

The hybrid part of the drive may be charged from solar panels or power generators. Detailed information are available from your local dealer.









The details of all vessels are offered in good faith but we cannot guarantee or warrant the accuracy of this information nor warrant the condition of the vessel. Any buyer should instruct their agents, or their surveyors, to investigate such details as the buyer desires validated. This vessel is offered subject to sale, price change, location or withdrawal without notice.



