



SEABOATS

MARINE BROKERS WITH A GLOBAL APPROACH

AUSTRALIA - BULGARIA - INDIA - INDONESIA - ITALY - MALAYSIA - NEW ZEALAND - PANAMA - PHILIPPINES - SINGAPORE - SPAIN - UK - USA - VENEZUELA - VIETNAM

sales@seaboats.net - www.seaboats.net

NEW BUILD - 40m Raptor Offshore Patrol Vessel.



Listing ID - 4155

Description NEW BUILD - 40m Raptor Offshore Patrol Vessel

Date Launched Built to Order

Length 40.4m (132ft 6in)

Beam 7.9m (25ft 11in)

Draft 1.7m (5ft 6in)

Location ex Shipyard, Singapore

Broker John Kearns
john.kearns@seaboatsbrokers.com
+64 21 400 805

Price POA

40m Raptor Offshore Patrol Vessel built to Lloyds Classification to +100A1 SSC, MONO, PATROL, G4, MCH notation on a well proven 3rd Generation hull platform.

Triple Cummins KTA50 developing 1342 kw/1800hp @ 1900 RPM each and providing a service speed of 28 knots @ 85% MCR at 30 DWT. Ballistic protected to NIJ level III Nato standard including the Bridge and Main deck cabin sides and fwd/aft bulkheads from deck level to top of windows. Five Weapon stations are provided for owner supplied and installed weapons. An aft deployment RHIB ramp shall be constructed integral to the vessels transom for RHIB deployment (RHIB not included).

Air-conditioned accommodation for up to 26 crew members.

DIMENSIONS

Length overall: 40.4 metres

Beam (Max) Moulded: 7.90 metres

Hull Baseline Design Draft (approx.): 1.7 metres
Propeller Draft (approx.): 1.9 metresGRT: Below 500 GT

TANK CAPACITIESFuel Oil: 60,000 litres
Fresh Water: 30,000 litres
Black/Grey Water: 500 litres

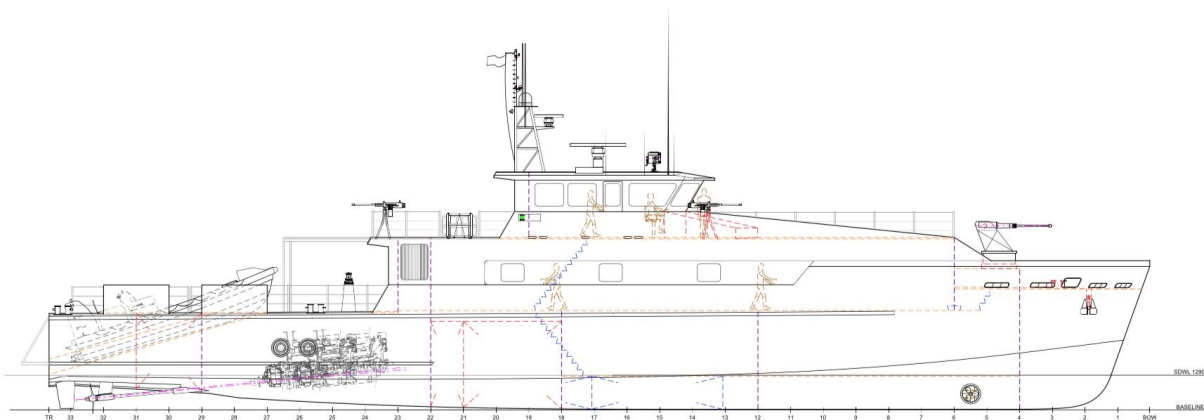
PROPULSION SYSTEM

Main Propulsion Engines: 3 x Cummins KTA50 at 1342 kw (1800hp) @ 1900 RPM
Propulsion: 3 x Fixed Pitch Propellers
Generators: 3 x Cummins 6BT5.9 at 80ekW, 415V/50Hz
Bowthruster: 1 x 60kw Electric tunnel thruster

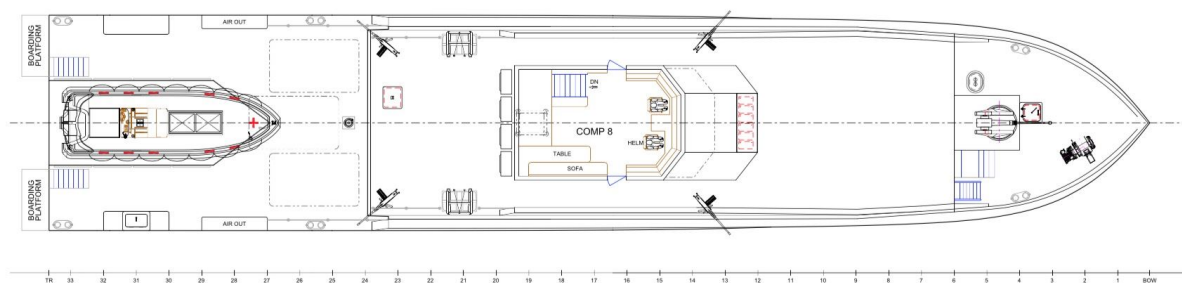
PERFORMANCEService Speed: 28.0 knots @ 85% MCR at 30 DWTE
External air: -10 C to + 35 C (80% relative humidity)
Internal air: +20 C to + 25 C (50% relative humidity)
Machinery space: Max 45 C
Sea water: 0 C to 32 C

ACCOMMODATIONS

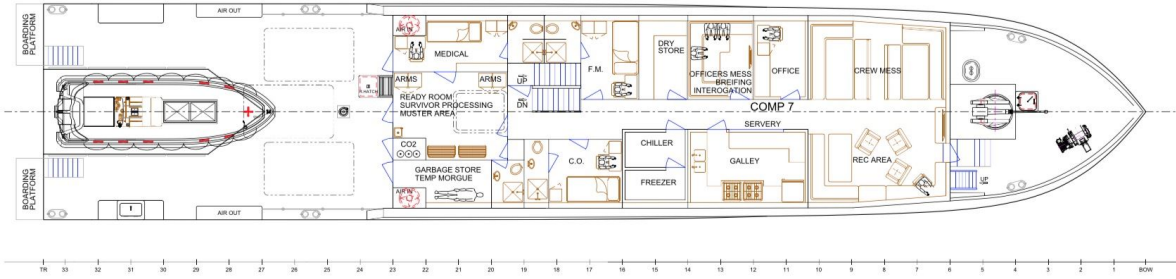
Crew: 26 Persons



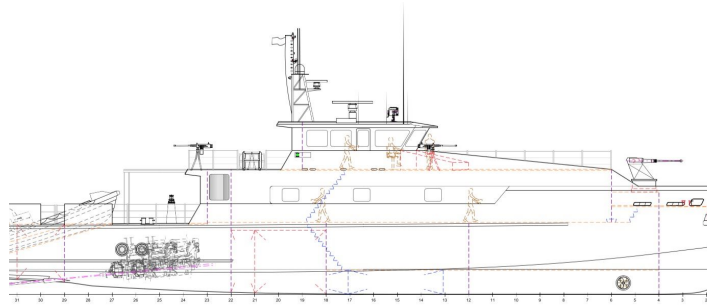
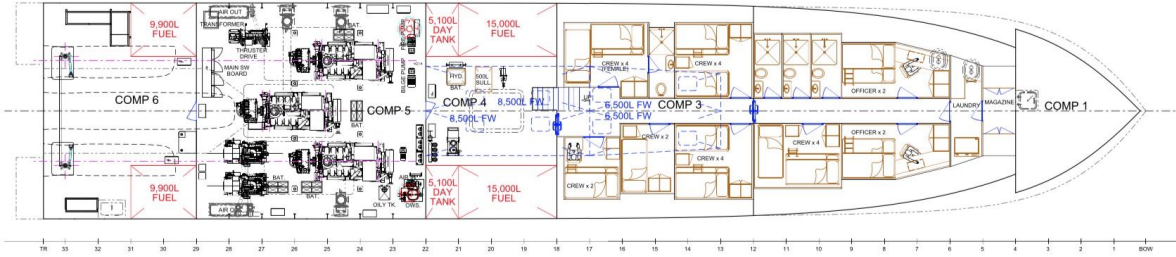
BRIDGE DECK PLAN



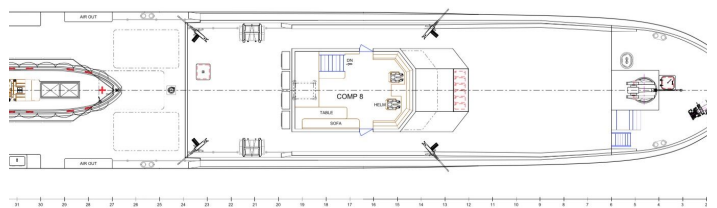
MAIN DECK PLAN



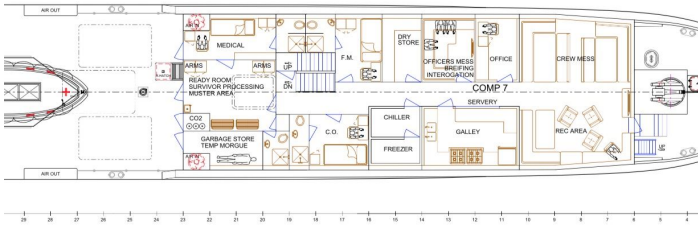
LOWER DECK PLAN



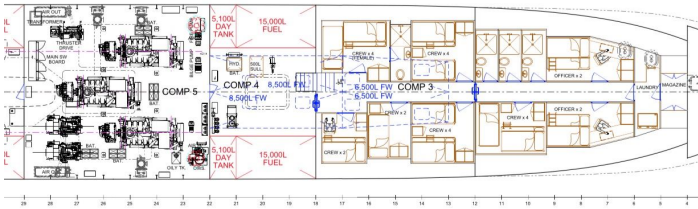
BRIDGE DE



MAIL



LOWEI



The details of all vessels are offered in good faith but we cannot guarantee or warrant the accuracy of this information nor warrant the condition of the vessel. Any buyer should instruct their agents, or their surveyors, to investigate such details as the buyer desires validated. This vessel is offered subject to sale, price change, location or withdrawal without notice.

