



SEABOATS

MARINE BROKERS WITH A GLOBAL APPROACH

AUSTRALIA - BULGARIA - INDIA - INDONESIA - ITALY - MALAYSIA - NEW ZEALAND - PANAMA - PHILIPPINES - SINGAPORE - SPAIN - UK - USA - VENEZUELA - VIETNAM

sales@seaboats.net - www.seaboats.net

BRAND NEW - 7000t Deck Barge



Listing ID - 4170

Description 7000t Deck Barge

Date 2022

Launched

Length 108.2m (354ft 11in)

Beam 20.5m (67ft 3in)

Draft 4.22m (13ft 10in)

Broker Franklin Taylor
franklin.taylor@seaboatsbrokers.com
+64 27 276 5383

Price USD 4.5million

Built: 2022

Classification Society: CCS

LOA: 108.2m

LWL: 102.10m

LBP: 100.60m

Beam: 20.5m

Draft: 4.22m

Depth: 5.8m

Upper deck sideline to first floor deck sideline: 3m

First floor deck to captain's deck: 3m

Captain's deck to driving deck: 2.40m

Driving deck to compass deck: 2.40m

Upper deck to top deck: 3m

Beam arches on the rest: 0.15m

GT: 2993

NT: 1676

DWT: 5160T

Max Loading: 7000T

This ship is a domestic offshore deck transport ship. This ship is mainly used to transport large prefabricated parts, pipes, piles and other large cargoes, and also used to transport bulk cargoes, all of which are non-combustible cargoes. The design load of the cargo deck is 10t/m². The ship's designed navigation area is an offshore navigation area. The ship is equipped with 5 watertight transverse bulkheads, which are located at the #3, #16, #31, #143, #151 frame positions. Stern ballast water tank, steering gear room, engine room, NO.5~NO.1 side ballast water tank and bottom ballast water tank, emergency fire pump room and fresh water tank (left and right), and fore tip tank are arranged in sequence The water tank and the first empty tank. There are three deckhouses above the first floor. Between each deck there is an enclosed enclosed main stairway, and there are inclined stairs for access outdoors.

Ship Type

The ship is made of steel, continuous single deck with bow, steel plate welded stern post with bulbous bow, stern frame bottom frame, bilge keel on the port and starboard bilge, two marine diesel engines are driven by a gearbox to drive fixed-pitch propellers. Twin-engine, twin-propeller, twin-rudder and stern ship. There are three deckhouses on the upper deck of the first floor. The ship is equipped with a diesel engine with limited power device.

Engine

Main Engine: Weichai 1500HP+1500HP

Main Propulsion Device: Host CW8200ZC-110 2 units

Gearbox: JD1500A 5.5:1

Speed: 8.5kn

The main engine runs at 90% rated power and has 5% sea wind and wave margin

Propeller

Fixed pitch propeller

Paddle type and number of blades: MAU type 5 leaves

Rotation: External rotation

Diameter: 2.85m

Material: Cu1 Manganese Bronze

Connection with propeller shaft: Flat key connection

Genset

Main Generator Set

Generator set model and quantity: CCFJ150J-Y 2 groups

Diesel Engine Model: WP10CD200E200

Output Power and Speed: 182kW×1500r/min

Generator Model: SB-HW4.D-150

Rated Power: 150 kW

Park Diesel Generator Sets

Generator set model and quantity: CCFJ50J-Y 1 group

Diesel Engine Model: WP4CD66E200

Output Power and Speed: 60kW×1500r/min

Generator Model: SB-HW4.D-50

Rated Power: 50 kW

Emergency Diesel Generator Set

Generator set model and quantity: CCFJ75J-Y 1 group

Diesel Engine Model: TD226B-6CD
Output Power and Speed: 90kW×1500r/min
Generator Model: SB-HW4(. D)-75
Rated Power: 75 kW

Ventilation System

The engine room of this ship is selected as a mechanical ventilation system according to calculations. Two sets are installed on the starboard side of the upper deck #22-#25 away from the midship 7850 and 9250. CZ-75A axial flow fan (flow rate: 21000 m³/h, total pressure: 350 Pa), one of which is reversible, and the structural ducts are all made of steel plate Welded, the ceiling-mounted air ducts in the engine room are made of galvanized sheet steel.

Capacity

Light Water tank

Serial Number: 1

Cabin Name: Fresh water tank (left)

Rib Position: FR143~FR151

Net Volume (m³): 28.32

Serial Number: 2

Cabin Name: Fresh water tank (right)

Rib Position: FR143~FR151

Net Volume (m³): 28.32

Firewood Oil tank

Serial Number: 1

Cabin Name: NO.1 diesel cabin

Rib Position: FR37~FR43

Net Volume (m³): 34.72

Serial Number: 2

Cabin Name: NO.2 diesel cabin

Rib Position: FR43~FR5

Net Volume (m³): 40.50

Serial Number: 3

Cabin Name: Diesel daily use cabinet (left)

Rib Position: FR29+0.075~FR30+0.435

Net Volume (m³): 4.50

Serial Number: 4

Cabin Name: Diesel daily use cabinet (right)

Rib Position: FR29+0.075~FR30+0.435

Net Volume (m³): 4.50

Pressure Water tank

Serial Number: 1

Cabin Name: Stern ballast tank (left, right)

Rib Position: FR3~FR16

Net Volume (m³): 206.85×2

Serial Number: 2
Cabin Name: NO.1 Bottom ballast tank (left)
Rib Position: FR121~FR143
Net Volume (m³): 59.34

Serial Number: 3
Cabin Name: NO.1 Bottom ballast tank (right)
Rib Position: FR121~FR143
Net Volume (m³): 60.15

Serial Number: 4
Cabin Name: NO.2 Bottom ballast tank (left, right)
Rib Position: FR100~FR121
Net Volume (m³): 111.12×2

Serial Number: 5
Cabin Name: NO.3 Bottom ballast tank (left, right)
Rib Position: FR79~FR100
Net Volume (m³): 127.36×2

Serial Number: 6
Cabin Name: NO.4 Bottom ballast tank (left, right)
Rib Position: FR58~FR79
Net Volume (m³): 127.41×2

Serial Number: 7
Cabin Name: NO.5 Bottom ballast tank (left, right)
Rib Position: FR31~FR58
Net Volume (m³): 155.22×2

Serial Number: 8
Cabin Name: Fore tip tank and ballast tank
Rib Position: FR151~First
Net Volume (m³): 40.12

Serial Number: 9
Cabin Name: NO.1 Side ballast tank (left, right)
Rib Position: FR121~FR143
Net Volume (m³): 300.16×2

Serial Number: 10
Cabin Name: NO.2 Side ballast tank (left, right)
Rib Position: FR100~FR121
Net Volume (m³): 428.14×2

Serial Number: 11
Cabin Name: NO.3 Side ballast tank (left, right)
Rib Position: FR79~FR100
Net Volume (m³): 446.26×2

Serial Number: 12

Cabin Name: NO.4 Side ballast tank (left, right)
Rib Position: FR58~FR79
Net Volume (m 3): 446.29×2

Serial Number: 13
Cabin Name: NO.5 Side ballast tank (left, right)
Rib Position: FR31~FR58
Net Volume (m 3): 561.63×2

Other Cabin

Serial Number: 1
Cabin Name: Domestic sewage storage tank
Rib Position: FR147~FR151
Net Volume (m 3): 13.48

Serial Number: 2
Cabin Name: FR50~FR53 Domestic sewage storage tank
Rib Position: FR50~FR53
Net Volume (m 3): 3.70

Serial Number: 3
Cabin Name: Residual oil tank
Rib Position: FR29~FR31
Net Volume (m 3): 3.88

Serial Number: 4
Cabin Name: Tail cooling water tank (Left,right)
Rib Position: FR3~FR8
Net Volume (m 3): 11.53×2

Serial Number: 5
Cabin Name: Dirty oil tank
Rib Position: FR29~FR31
Net Volume (m 3): 3.88

Serial Number: 6
Cabin Name: Oil storage cabinet
Rib Position: FR29+0.075~FR30+0.435
Net Volume (m 3): 1.14

Accommodation

Crew Quota: 10 people
Kitchen
Dining room
Entertainment area
Three-pipe wheel room
Stairway room
2 crew rooms
Stairway room
Emergency generator room

CO2 room
Toilets
Second-tube wheel room
Third auxiliary room
Reception room
Toilet respectively
Captain's deck
Captain's room and its reception room
Chief Engineer's room and its reception room
Chief Mate's room and its reception room
Bathroom and toilet

Cockpit
From port to starboard
Crew's room
Chart area
Toilet and wheelhouse

Spacing of Frames

Rib Spacing
Tail-FR16: 600mm
FR16-FR151: 640mm
FR151-first: 600mm

Spacing between longitudinal bones
Double Bottom: 615mm
Upper Deck: 615/500mm
Side: 550/600mm
Longitudinal Wall: 550/600mm

Spacing of deck stringers
Deck Stringer: 1230/1845/2460 mm

Spacing between side keels
Side Keel: 1230/1845/2460 mm

Mooring Equipment

Anchor
Anchor chain
Windlass
Tow rope
Mooring ropes

Mooring Accessories

Bollards
Fairleads
Fairlead rollers adopt relevant national standards
The lower deck with bollards
The fairlead is welded to the bulwark plate and reinforced with a bracket

Rudder Equipment

Rudder Blade

Number of rudder blades: 2 individuals

Single rudder area A: 6.40 m²

Aspect Ratio λ : 1.60

Balance Ratio k: 0.25

Life-saving Equipment

Lifeboats: 2 fully enclosed lifeboats with 12 persons on the starboard and starboard sides of the bow deck

Life Jackets: 18

Life Jacket Light: 1

Immersion Suit: 12 pieces

Lifebuoys: 10

Self-lighting Lights: 3

2 Buoyant Lifelines: 2

Lights and Smoke Signals: 2

Rope Throwing Equipment

Portable Rope Throwers: 4

Pyrotechnic Signal Equipment

Rocket Parachute Flame Signals: 12

3 life raft two-way VHF radio telephones

Firefighting Equipment

Fire Hydrant: 19

Hose Boxes: 19

Hose and water gun

The ship is equipped with 7 9L portable foam fire extinguishers

7 spares

15 5kg portable dry powder fire extinguishers

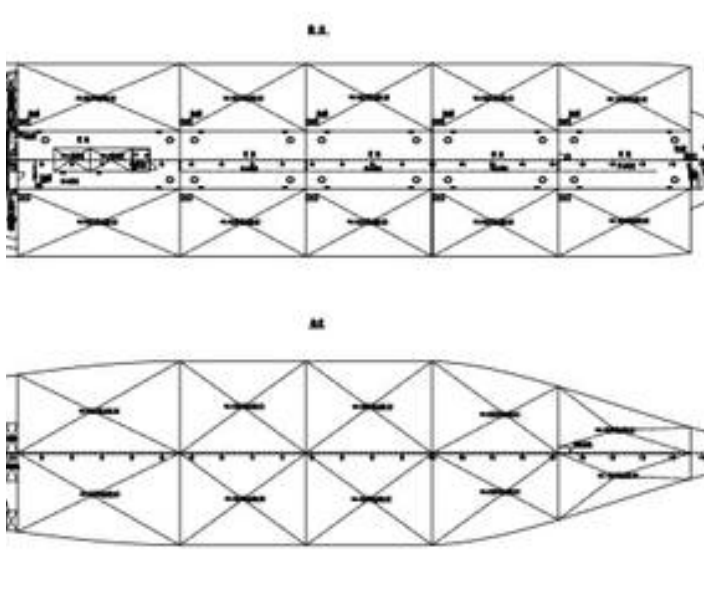
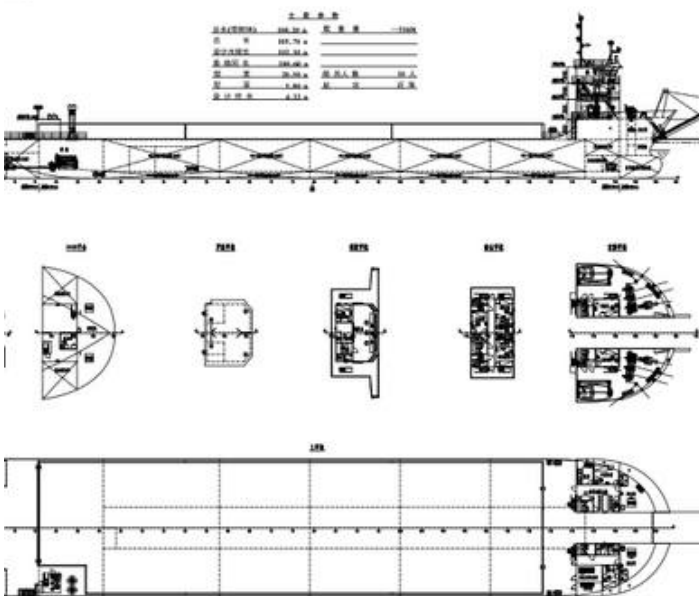
13 spares

The cabin is equipped with 1 portable foam gun device or related spare container, and 1 45L cart-type foam fire extinguisher

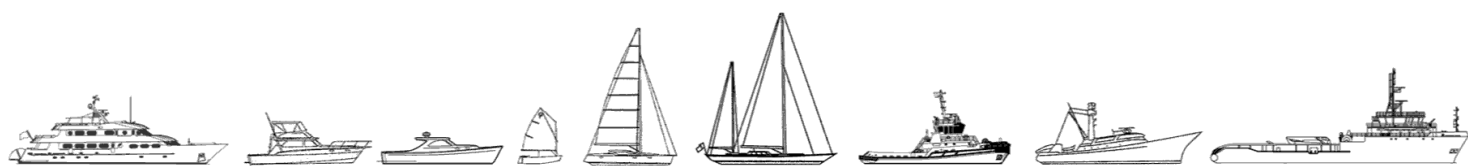
One set of carbon dioxide cylinders

Fireman's Equipment

The ship is equipped with 2 sets of firefighter's equipment, which are equipped with the corresponding configuration required by the code. (5) The ship is equipped with 6 sets of emergency escape breathing devices (EEBD).



The details of all vessels are offered in good faith but we cannot guarantee or warrant the accuracy of this information nor warrant the condition of the vessel. Any buyer should instruct their agents, or their surveyors, to investigate such details as the buyer desires validated. This vessel is offered subject to sale, price change, location or withdrawal without notice.



AUSTRALIA - BULGARIA - INDIA - INDONESIA - ITALY - MALAYSIA - NEW ZEALAND - PANAMA - PHILIPPINES - SINGAPORE - SPAIN - UK - USA - VENEZUELA - VIETNAM