



SEABOATS

MARINE BROKERS WITH A GLOBAL APPROACH

AUSTRALIA - BULGARIA - INDIA - INDONESIA - ITALY - MALAYSIA - NEW ZEALAND - PANAMA - PHILIPPINES - SINGAPORE - SPAIN - UK - USA - VENEZUELA - VIETNAM

sales@seaboats.net - www.seaboats.net

45.5m LCT



Listing ID - 420419

Description 45.5m LCT

Date 2007

Launched

Length 45.50m (149ft 3in)

Beam 10.90m (35ft 9in)

Draft 3.20m (10ft 5in)

Location Malaysia

Broker Peter Cookson
peter.cookson@seaboatsbrokers.com
+61 429 543 180

Price POA

Year Built: 2007

Classification: LR

Official No. / Call Sign: 330861 / 9WHA2

Flag: Malaysia

Available: May 2007

Main Dimension

Length Overall: 45.50m

Beam: 10.90m

Depth: 3.20m

Designed Draft: 2.20m

Max Draft: 2.40m

Tank & Loading Capacity (Approx)

Fresh Water: 449m³*
Long range fuel: 338.00m³*
SW / FW ballast tank: 82.00m³*
Deck Area: 230m²*
Deck Cargo: 330 Tonnes
Deck Strength: 5mt/sqm

Cargo Handling Pump

Fresh Water Pump: 1 x 60m³/hr @ 50m head
Fuel Oil Pump: 1 x 60m³/hr @ 50m head

Performance

Speed: approx 11 knots
Endurance: 30days

Deck Fitting & Machinery

Ramp Door: For beaching
Bow Anchor: 2 x 900kg Stockless anchor with 8 shackles anchor chain
Windlass: 2 x Electro Hydraulic Twin Gypsy c/w hydraulic-electro power pack
Reefer Point: 6 nos.

Machinery

Marine Engine: 2 x CAT 3412
Power: 2 x 720 BHP @ 1800 rpm
Bowthruster: Tunnel type – 3 tons
Propulsion: 2 fixed pitch propellers
Generator: 2 x CUMMINS 6BT5.9D(M), 80Kw 415/3/50

Navigation & Communication

Communication equipments complied with GMDSS for A3 for vessel <500 GRT

Safety and Fire fighting Equipment

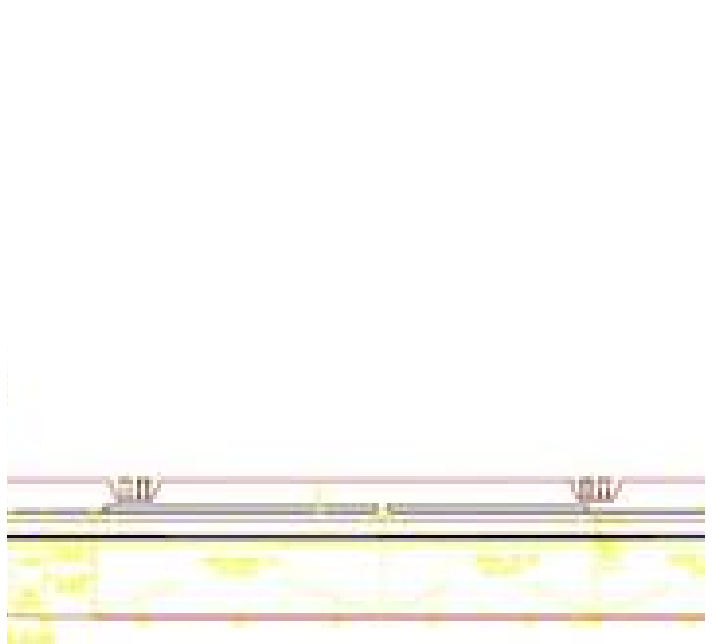
In compliance with SOLAS &/ Class requirement &/ requirement of Flag administration.

Accommodations

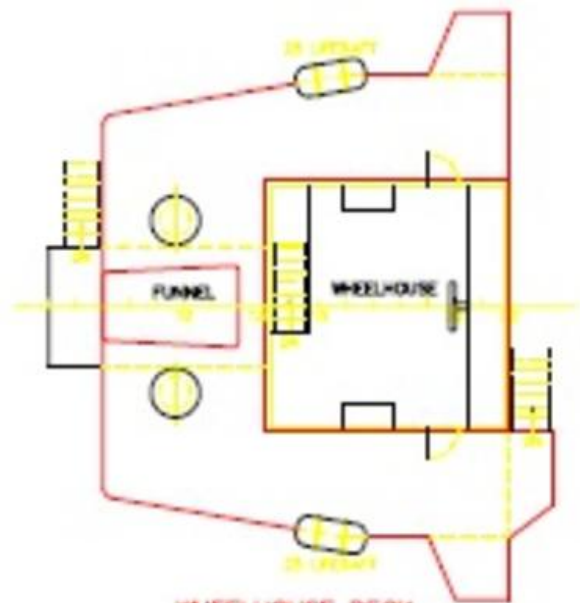
Fully central air conditioned: 22 berth

Others

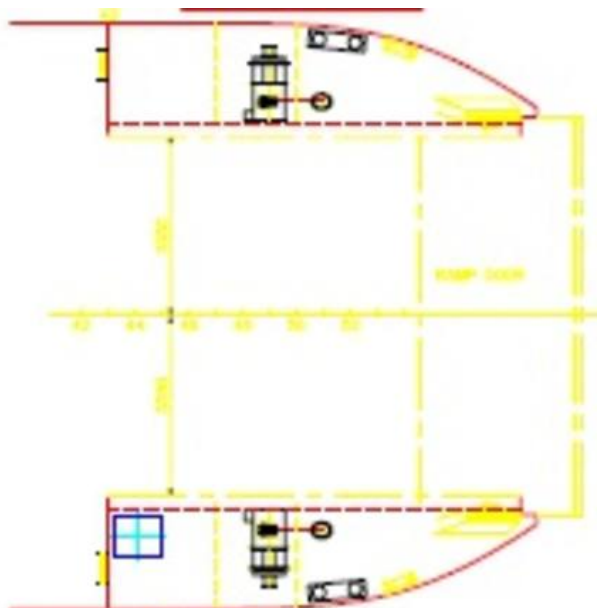
Sewage Treatment Plant: 22 men



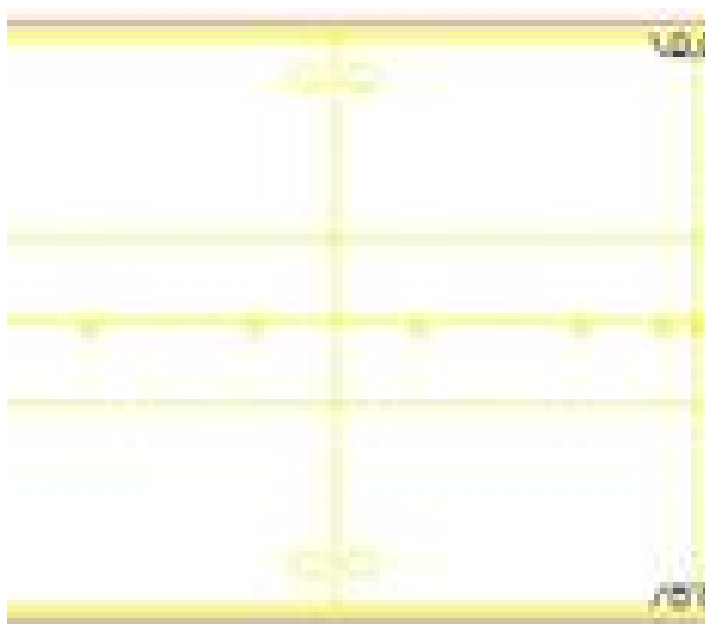
POOP DECK

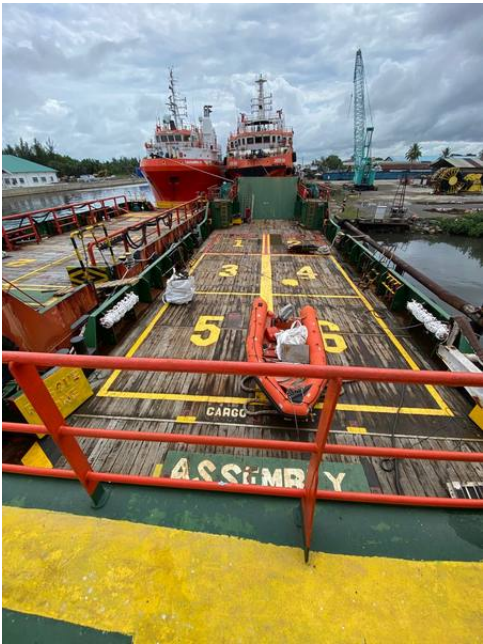


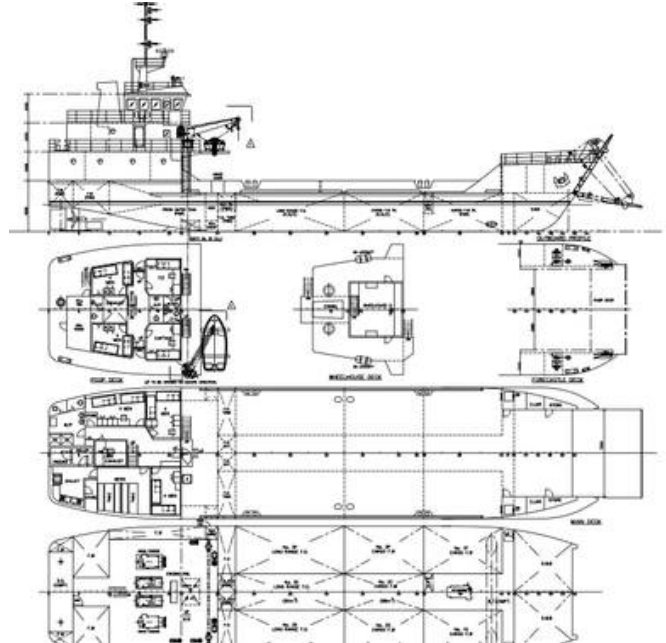
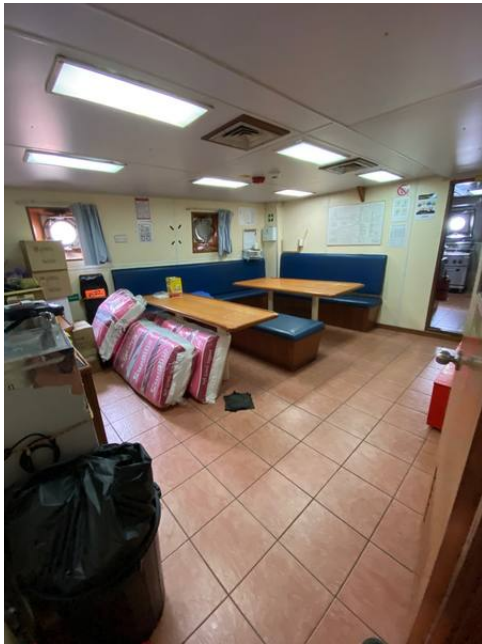
WHEELHOUSE DECK



FORECASTLE DECK







The details of all vessels are offered in good faith but we cannot guarantee or warrant the accuracy of this information nor warrant the condition of the vessel. Any buyer should instruct their agents, or their surveyors, to investigate such details as the buyer desires validated. This vessel is offered subject to sale, price change, location or withdrawal without notice.

