



# SEABOATS

MARINE BROKERS WITH A GLOBAL APPROACH

AUSTRALIA - BULGARIA - INDIA - INDONESIA - ITALY - MALAYSIA - NEW ZEALAND - PANAMA - PHILIPPINES - SINGAPORE - SPAIN - UK - USA - VENEZUELA - VIETNAM

[sales@seaboats.net](mailto:sales@seaboats.net) - [www.seaboats.net](http://www.seaboats.net)

## NEW BUILD - 16m Truckable Barge



### Listing ID - 420486

Description	16m Truckable Barge
Length	16.30m
Beam	7.05m
Draft	1.50m
Location	ex yard, NSW, Australia
Broker	Ivan Colaco <a href="mailto:ivan.colaco@seaboatsbrokers.com">ivan.colaco@seaboatsbrokers.com</a> +61 401 695 814

Price Notes POA

### PRINCIPAL DIMENSIONS:

Length Assembled: 16.30 metres  
Beam Assembled: 7.05 metres  
Beam of Pontoon: 3.20 metres  
Depth moulded: 1.50 metres  
Weight Assembled: Approx 40 tonnes  
Draft Assembled: approx 0.40 metres  
Draft Loaded: approx 1.00 metres  
Deadweight capacity: approx 60 tonnes

### HULL & MATERIALS:

Primary Structure: All steel construction. Min AS GR250. 10mm deck plate. 100x75x8UA transverse beams at 600mm C-C 8mm Bottom and transom. 6mm heads and sides. Primary Longitudinal Girders, bulkheads and pillars to give suitable structure for approx. 25t Excavator loadings. Welding consumables to AS/NZS

Deck IWO Excavator: 40mm Timber hardwood deck sheathing IWO excavator crawler tracks. Housed in steel EA

Excavator Ramps: 2 x Excavator ramp tracks of 6m x 0.75m APD positioned on 50mm diameter end bars by Pontoon crane suitable for a 25t crawler excavator.

Fenders Bollards & Lugs: Tyre lugs positioned APD with seven (7) rubber tyre fenders P&S. Eight (8) double bit bollards Positioned APD. Four (4) x 20pl lifting lugs per pontoon positioned fore & aft. P&S

Hatches: Hatches positioned APD with coamings, hinged lids hasp & eye (padlocking) give access to voids for storage and R&M. Bulkhead Manholes where deck hatches not fitted. Larger aft port deck hatch to allow storage of equipment below and larger bolted flush hatch to starboard to allow fitting and access of equipment below deck if required by customer.

Spuds: Assembled unit consists of two (2) steel spuds of 11.5mtr length. 355 dia x 9mm wt. Three (3) spud positions (moon pools) are inherent to pontoon structure. APD

Preservation: Blasting & priming to appropriate AS, with full Paint system to Jotun specification marine application

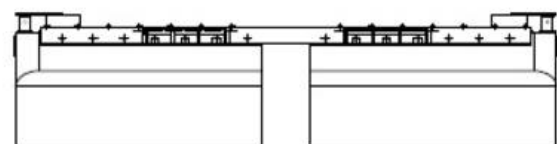
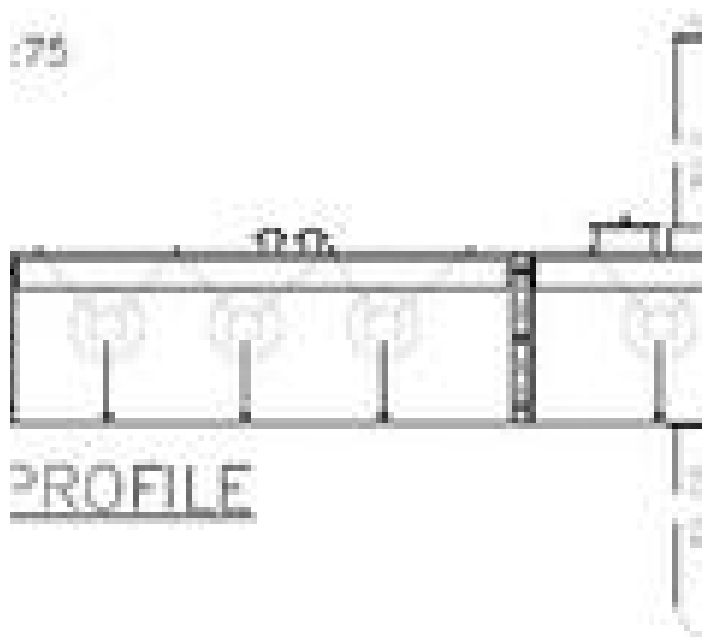
Crane (TBC by Owner): A Palfinger, Hiab or similar suitable marine grade crane is to be fitted port side fwd. Max capacity as per survey requirements for lifting, NSCV stability criteria. Owner requirements for crane capacity TBC for stability check.

#### **SURVEY AND FLAG:**

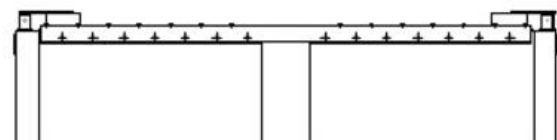
As pontoon is equipped with lifting gear (crane) and Excavator the unit is to be registered with the appropriate state Authority. Structure is designed to NSCV and approved by MSQ accredited designers. Survey to be carried out by an accredited surveyor and issued with a certificate of survey along with approved stability book for the lifting profile. MSQ Class 2D.

#### **DELIVERY & PRICE:**

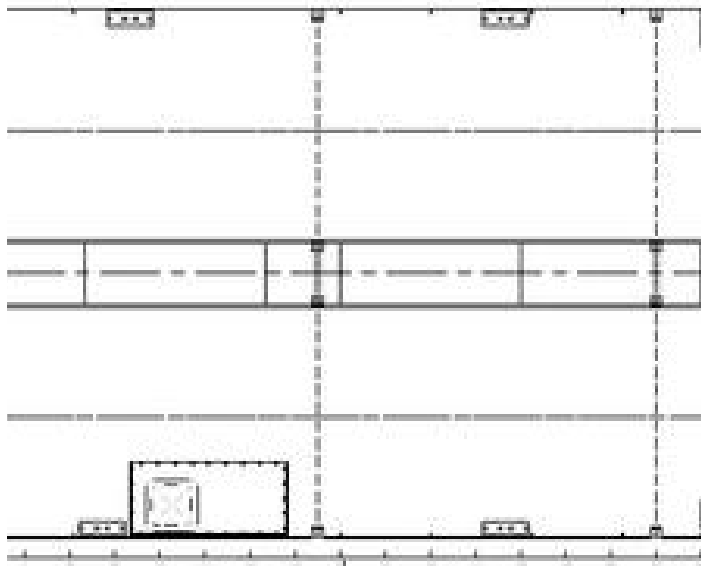
Repositioning costs are to owner's expense. Price includes Design and Survey including crane stability and lifting profile to NSCV Class 2D. It does NOT include registration fees or supply of any crew or operational manuals particular to the customer or required by the local operating Authority which is to the owner's expense. Price does NOT include Crane. Customer requirements for the crane are to be confirmed and stability criteria checked prior. Standard transportable dumb barge has the crane positioned fwd port side and clear of excavator, however pending final choice of crane by Owner and compliance with NSCV stability the crane position may need to be moved.



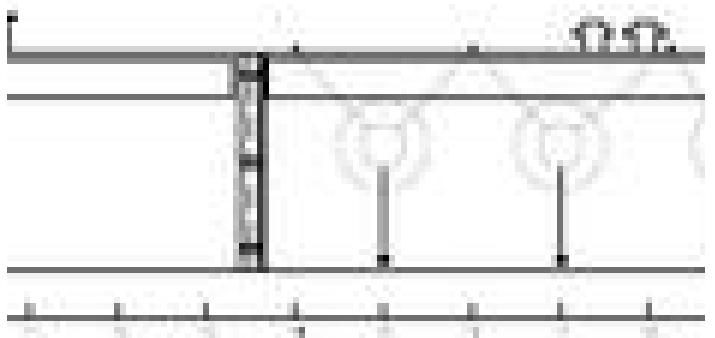
FWD END VIEW  
SCALE: 1:75



AFT END VIEW  
SCALE: 1:75

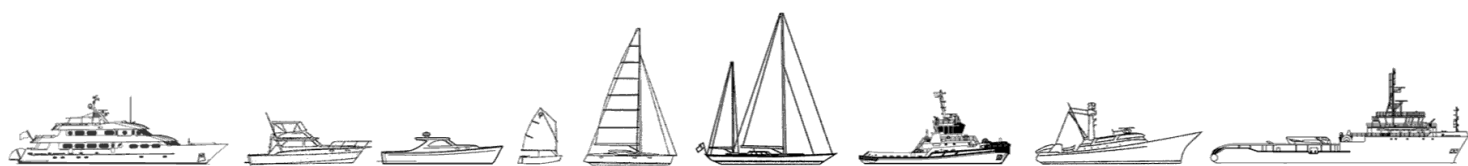


PLAN VIEW



PROFILE  
SCALE: 1:75

The details of all vessels are offered in good faith but we cannot guarantee or warrant the accuracy of this information nor warrant the condition of the vessel. Any buyer should instruct their agents, or their surveyors, to investigate such details as the buyer desires validated. This vessel is offered subject to sale, price change, location or withdrawal without notice.



AUSTRALIA - BULGARIA - INDIA - INDONESIA - ITALY - MALAYSIA - NEW ZEALAND - PANAMA - PHILIPPINES - SINGAPORE - SPAIN - UK - USA - VENEZUELA - VIETNAM