



SEABOATS

MARINE BROKERS WITH A GLOBAL APPROACH

AUSTRALIA - BULGARIA - INDIA - INDONESIA - ITALY - MALAYSIA - NEW ZEALAND - PANAMA - PHILIPPINES - SINGAPORE - SPAIN - UK - USA - VENEZUELA - VIETNAM

sales@seaboats.net - www.seaboats.net

10000T LCT Deck Barge



Listing ID - 4216

Description 10000T LCT Deck Barge

Date 2007

Launched

Length 116m (380ft 6in)

Beam 20m (65ft 7in)

Draft 4.20m (13ft 9in)

Location China

Broker Franklin Taylor

franklin.taylor@seaboatsbrokers.com

+64 27 276 5383

Price USD 4.4 million

This ship is a deck cargo ship driven by stern engine, bulbous bow, double engine, double propeller, double rudder and diesel engine. The ship has a first floor at the bow and four deckhouses at the stern. The stern is a single-deck single-bottom transverse framing structure, the middle main deck is a single-deck longitudinal framing structure, and the bottom 7000mmThe area is a double bottom longitudinal framing structure, the side is a single bottom longitudinal framing structure; the forward deck is a longitudinal framing structure, The bottom of the ship is a horizontal frame structure with a single bottom. This ship is a multi-purpose deck ship, which can transport iron ore, coke and steel structure and so on. When using vehicles to load and unload cargo on and off the ship through the bow ramp, before all cargo loading and unloading is completed and ready to sail, It should be ensured that all loading and unloading vehicles have safely left the ship through the ramp. During the voyage of the ship, no one is allowed loading and unloading vehicles remain in the loading area. At the same time, the ramp is to be lifted and locked with the deckhouse on each side, and there is a corresponding sound in the bridge and light alarm facility. This ship is a sea ship.

Ship Type: Deck Cargo Ship

Classification Society: China Classification Society

Built: 2007

Rebuilt: Aug. 2019

LOA: 116m

LWL: 112.80m

Length between Two Columns: 111m

Upper Deck: 113.88m

Width: 20m

Depth: 6.60m

Draft: 4.20m

Main Deck Beam Arch: 0.20m

Crew: 13

Speed: 8 knots

GT: 4415

NT: 2472

Cabin Capacity

Forepeak Cabin: 167.70m³

NO1 Ballast tank (P/S): 72.40 m³

NO2 Ballast tank (P/S): 190.13m³

NO3 Ballast tank (P/S): 231.42 m³

NO4 Ballast tank (P/S): 207.11 m³

NO5 Ballast tank (P/S): 197.15 m³

NO6 Ballast tank (P/S): 207.01 m³

NO7 Ballast tank (P/S): 202.50m³

Heavy Oil Tank (P/S): 33.64m³

Light Oil Tank (P/S): 35.41m³

NO1 Fresh water tank (P/S): 19.04 m³

NO2 Fresh water tank (P/S): 20.92m³

Propulsion Device

Host Model: G6300ZCB/G6300ZC1B

Rated Power: 750 KW x 2

Rated Speed: 400r/min

Gearbox Model: 45.49

Speed Ratio: 2.467:1

Freeboard

The ship's actual summer freeboard 2416mm, satisfying our country 2011 Statutory Survey of Ships and Offshore Installations Statutory Survey Rules for Sea-going Vessels) and 2012, 2014, 2016, 2018 Annual revision notice to B ship requirements.

Complete Stability

The intact stability of the ship under various typical working conditions satisfies the requirements of our country 2011 Statutory Inspection Regulations for Ships and Offshore Installations (National Statutory Survey Rules for Sea-going Vessels) and 2012, 2014, 2016, 2018 Requirements for deck cargo ships in annual repair notification.

Damage Stability

The ship's damage stability meets the requirements of our country 2011 "Rules for Statutory Inspection of Ships and

Offshore Installations" (Statutory Inspection of Sea-going Vessels inspection rules) and 2012, 2014, 2016, 2018 Requirements for deck cargo ships in annual repair notification.

Layout

Watertight Bulkhead Setting

The whole ship is provided with watertight transverse bulkheads 10 road, located in FR5, 27, 35, 56, 77, 97, 118, 141, 161, 177.

Main Hull Arrangement

Below the main deck: stern - FR5 For the steering gear compartment. FR5-27 for the cabin. FR27-31 Left and right are heavy oil tanks, FR31-35 left and right light oil tanks, empty tanks in the middle. FR35-56 left and right NO7 Ballast water tank with empty tank in the middle. FR56-77 left and right NO6 Ballast water tank with empty tank in the middle. FR77-97 left and right NO5 Ballast water tank with empty tank in the middle. FR97-118 left right is NO4 Ballast water tank with empty tank in the middle. FR118 - 141 left and right NO3 Ballast water tank with empty tank in the middle. FR141 - 159 left and right NO2 Ballast water tank with empty tank in the middle. FR159 - 177 left and right NO1 Ballast water tank, empty and emergency in the middle fire pump room. FR177 - The bow is the forepeak cabin. Below the deck of the first floor: the left and right are the sail cable compartment and the anchor chain compartment.

Deckhouse Layout

Main deckhouse: equipped with tool room, machine repair room, utility room, engine room shed, duty room, toilet, grain storehouse, storage room, storage room, CO2 Room, battery room, stairway, kitchen and dining room.

Poop deck house: equipped with stairway, spare room, toilet, bathroom, chief officer room, first engineer room, second engineer room, third engineer room wheel room and 2 crew room.

Living deck house: equipped with stairway, toilet, bathroom, captain's room, chief engineer's room, second room, third room and 3 between crew room.

Driving deck house: stairway, toilet and driving cab are arranged.

Hull Structure

Structural Form and Welding

The middle deck, side and bottom of this ship are of longitudinal framing type. 3 Road longitudinal wall. Fore and aft and engine room decks are of transverse frame type. Both the bow and stern and the side of the engine room are of transverse framing structure. first and last It adopts a single-layer bottom horizontal skeleton structure. The main members of the hull are to be kept continuous, and reinforcement is to be made in case of unavoidable disconnection. Any strength member, such as When pipelines or cables pass through, manholes or other functions, the size of the openings should meet the requirements of the specification. Outer panels and other strength members. All openings shall have smooth rounded corners, and the bottom box and other openings shall be provided with thickened plates or cladding plates. The water flow holes, ventilation holes, notches where frames pass through the members and the type of structural joints on the ship's members are to be in accordance with the relevant standards. Ready for construction. All welding surfaces should be clean, dry, free of chips, oxides, grease, impurities, and the edge of the plate should be meet specification requirements. Prefabrication and automatic/semi-automatic welding should be used as far as possible for hull construction, flat welding should be used as far as possible for manual welding, and component assembly should be It should not be forced to form to avoid large internal stress and deformation in the component. If the welding groove or the assembly gap is too large, it must be repaired timing, the surveyor's consent is to be obtained. All welds are welded according to the specifications. Before manual back-sealing welding on the back of the welds, the grooves should be planed and whitened. The welds should be thoroughly cleaned and Remove slag, avoid slag inclusions, undercuts, pores and other welding defects, and all fine and rough welds should be polished smooth. Before welding, it is to prove that the chemical composition of the primer has no adverse effect on the welding quality, and report to the surveyor for approval. Welds in

important and critical parts shall be X Light, ultrasonic and other non-destructive testing methods to check the internal quality of welds, In case of defects, it must be repaired, and it should be re-inspected after repairing.

Materials And Structural Dimensions

The structural material of the main hull adopts the marine steel approved by the classification society, unless it is marked as CCS-A grade steel. The deckhouse is of steel structure, the frame type is transverse frame type, the front end, side wall and inner wall of the deckhouse are all vertical. The plate structure type of the straight stiffener.

Outfitting Equipment

Anchoring Equipment

First Anchor: with 2 only Hall anchors, each heavy 1740 Kg.

Anchor Chain: Equipped with Welding Anchor Chain AM2-Ø34 (GB/T 549-1996), long 495 m. (3) Anchor winch: with Ø34 Electric windlass 2 table, left and right 1 tower

Mooring Equipment

Mooring Line: with eight-strand polypropylene cable 4 root, with a diameter of 40mm, each length 170 m

Rudder Equipment

Rudder blade: with streamline balance rudder 2 only, the area of a single rudder blade is 7.5 m², the balance coefficient is 0.28, the thickness ratio is 0.15. The rudder area coefficient is 0.039, the aspect ratio is 1.2.

Servo: with 100 KN.m Swing cylinder hydraulic steering gear 1 Taiwan (dual rudder).

Fire-fighting and Life-saving Equipment

CO2 Fire extinguishing system: engine room CO2 Fire extinguishing system protection.

Fire Equipment:

5kg dry powder fire extinguisher: 2 tools

9 Liter Foam Fire Extinguisher: 20 tools

45 Litre cart-type foam fire extinguisher Portable Foam Gun: 1 tower

5 Kilogram CO2 fire extinguisher: 4 tools

Fire Hose and Water Gun: 15 only

Firefighter Equipment: 2 sets

Life-saving Equipment

Life Jacket (with life jacket light): 17 pieces

Life Jacket: 15 pieces

Lifebuoy with self-igniting light: 4 only

Lifebuoy with lifeline: 6 only

13 Man self-righting throwing life raft: 2 only

13 Human fully enclosed lifeboat (each one of them doubles as a rescue boat): 2 only

Red Light Parachute Signal: 12 pieces

Lifesaving rope thrower: 4 tool

Emergency Escape Breathing Apparatus: 7 tool

Lifebuoy with self-igniting light and smoke signal: 2 only

Ride the rope ladder: 3 departments

6 Man throwing life raft: 1 only

Navigation Signal Equipment

Navigation Equipment

Marine Radar: 1 station

Satellite Navigator: GPS2 sleeve
Tail Shaft Tachometer: 2set
Rain and Snow Remover: 2Only
Rudder Angle Indicator System: 2set
Electric Tachometer: 2set
Echo Sounder: 1set
Standard Magnetic Compass: 1only
Steering Magnetic Compass: 1Only
Sounding Hammer: 1Only
AIS system: 1set
Electronic Chart: 1table
Gyro: 1desk
Autopilot: 1set

Signal Equipment

Anchor Light: 2 lamp
Mast Light: 2 light
Stern Light: 1 lamp
Sidelight: 2 lamp
Signal Light: 6 cup (of which 2 out of control light)
Portable daylight communication flash: 1 cup
Medium Flute: 1 only
Large Clock: 1 only
Large Sphere: 3 only
The Chinese flag (4 No): 4 face
International signal flag (4No): 1set of hand flags 1 vice

Radio Equipment

Medium / high frequency radio station: 1Set
VHF radiotelephone: 1 Sleeve
Nevotes Receiver: 1set
Guard Star Emergency Beacon: 1station
Radar Transponder: 2two-way
VHF radiotelephone for survival craft: 3one
Walkie-talkie: 3Only

Anti-corrosion Device

In addition to brushing with effective paint, the immersed surface of the steel hull of this ship is also provided with anti-corrosion zinc blocks to protect the outer surface of the underwater part of the hull. plate to prevent corrosion, sacrificial anode protection for years 3year.

Restricted Use of Combustible Materials

Enclosures of corridors and stairways, and exposed surfaces of ceilings in living spaces, service spaces (except saunas) and control stations Surfaces, and surfaces and linings in sheltered or inaccessible places in accommodation spaces, service spaces and control stations shall have low flame spread. Paints, varnishes and other finishes used for exposed surfaces should not generate excessive fumes and toxic substances. Deck base coverings used in accommodation spaces, service spaces and control stations are to be resistant to fire at high temperatures approved materials that generate fumes and toxic substances or explosion hazard.

Anti-fouling System

Anti-fouling systems containing biocide organotin compounds should not be applied to this vessel.

Machine Equipment

Host Machine

Model: G6300ZCB/G6300ZC1B

Type: Four-stroke, water-cooled, in-line, direct injection, supercharged intercooling, irreversible change

Rated Power: 750kW

Rated Speed: 400r/min

Bore × Journey: 300mm×380mm

Fuel Consumption: 215g/kW.h

Oil Consumption Rate: 2.18g/kW.h

Start Mode: Compressed air start

Gearbox

Model: GWC45.49

Reduction Ratio: 2.4671:1

High Elastic Coupling

Model: RATO-R2527

Rated Torque: 25kN.m

Gearbox Oil Reserve with a Pump

Model: 2CY-7.5/2.5D

Flow: 7.5m³/h

Pressure: 2.5MPa

Motor Power: 7.5kW

Main Generator Set

Unit Type: CCFJ100JL

Rated Power: 100kW

Diesel Engine

Model: 6135ZCaf

Power: 126kW

Amount of speed: 1500r/min

Fuel consumption: 235g/kW.h

Oil consumption rate: 1.0g/kW.h

Starting method: DC24V starting and pressing compressed air start

Dynamo

Power: 100kW

Voltage: 400V

Frequency: 50Hz

Combination of fuel and exhaust gas boiler

Model: ZYS0.35/50-0.7(Dual machine type)

Fuel Evaporation: 350kg/h

Evaporation of exhaust gas: ~350kg/h

Working Pressure: 0.7MPa

Unit Power: ~3.4kW

Boiler Feed Pump

Model: 25W-70

Type: Horizontal self-priming centrifugal pump

Flow: 0.78~1.8m³/h

Pressure: 1.1~0.52MPa

Motor Power: 3kW

Working Temperature: ≤220°C

Hot wells, atmospheric condensation device

Fuel Supply Unit

Model: KHV(T)U-B11-1.2A

Rated fuel supply: 1.2m³/h

Rated fuel viscosity control range: 9~15Cst

Circulating fuel supply pump power: 2×1.5kW

Machine power: ~3.5kW

Fuel Oil Separator

Model: KYDR203CD-23

Type: Manual slag discharge type

Rated Separation: 1500l/h 1500s

Separation amount of heavy oil: 675l/h

Power: 2.2kW

Oil Separator

Model: KYDR203CD-23

Type: Manual slag discharge type

Rated separation: 1500l/h

Power: 2.2kW

Main Air Compressor

Model: LSHC-40A

Exhaust Volume: 20 m³/h

Pressure: 3.0MPa

Power: 5.5kW

Emergency Air Compressor

Model: LSHC-40A

Displacement: 20m³/h

Pressure: 3.0Mpa

Diesel power (S195): 5.5kW

Start mode: Hand crank

Main Engine Starting Air Bottle

Model: A0.32-3 CB/T493-98

Volume: 320L

Pressure: 3.0MPa

Auxiliary Engine Starting Air Bottle

Model: A0.32-3 CB/T493-98

Volume: 320L
Pressure: 3.0MPa

Miscellaneous Air Bottle

Model: A0.25-1 CB/T493-98
Capacity: 250L
Pressure: 1.0MPa

Air Whistle Buffer Air Bottle

Model: A0.05-1 CB/T493-98
Capacity: 50L
Pressure: 1.0MPa

Pneumatic quick closing control valve box

Cylinder volume: 30L
Working pressure: 1MPa

Heavy Oil Transfer Pump

Model: KCB-200
Type: Gear pump
Displacement: 12m³/h
Head: 0.33Mpa
Power: 4kW

Light Oil Transfer Pump

Model: KCB-55
Type: Gear pump
Displacement: 3.3m³/h
Head: 0.33Mpa
Power: 1.5kW

Oil Transfer Pump

Model: KCB-55
Type: Gear pump
Displacement: 3.3m³/h
Head: 0.33Mpa
Power: 1.5kW

Oil Delivery Backup Pump

Model: CS-32Y
Flow: 2.4 m³/h
Indenter: 0.25 Mpa

Sump Oil Transfer Pump

Model: KCB-55
Type: Gear pump
Displacement: 3.3m³/h
Head: 0.33 Mpa
Power: 1.5kW

Sewage Oil Water Transfer Pump

Model: 50CLZ-4.5A

Type: Vertical self-priming centrifugal pump

Flow: 10 m³/h

Pressure: 0.28 MPa

Motor Power: 3kW

Stern Shaft Oil Pressure Pump

Model: CS-25Y

Flow: 1.92 m³/h

Indenter: 0.25 Mpa

Bilge, Ballast Pump

Model: 125CLZ-23

Type: Vertical self-priming centrifugal pump

Flow: 160 m³/h

Pressure: 0.2MPa

Power: 18.5kW

Fire Pump

Model: CLH80-220B

Type: Vertical heart pump

Flow: 45m³/h

Pressure: 0.48 MPa

Power: 11kW

Emergency Fire Pump

Model: 80CWY-55 flow:60m³/h

Pressure: 0.55MPa

Diesel engine power: 20kW

Start mode: electric start

Cooling method: water cooling (closed cooling)

Fore Peak Bilge Water Jet Pump

Model: CP15-0.3T flow:15m³/h

Working water consumption: 19m³/h

Atmospheric condenser cold But the water pump

Model: CLH65-50-6.5(Z)

Type: Vertical centrifugal pump

Flow: 25m³/h

Pressure: 0.32MPa

Power: 4kW

Cabin Ventilator

Model: CZ-80A

Flow: 27000 m³/h

Full pressure: 530Pa

Power: 7.5kW

Engine Room Exhaust Fan

Model: CZ-70B

Flow: 15000 m³/h

Full pressure: 230Pa

Power: 2.2kW

Fresh water pump set / sanitation Pump set / backup pump Group

Model: 1.5CWX-2A

Flow: 3 m³/h

Pressure: 0.4Mpa

Power: 2.2kW

Fresh water pressure tank Sanitary water pressure cabinet

Model: A0.3 CB455-91

Volume: 300L

Working pressure: 0.4MPa

Steam / Electricity Plus hot water tank

Model: ZDR-0.3

Volume: 0.3m³

Working pressure: 0.4MPa

Heating method: steam/electric heating

Electric heating power: 12kW

Oil Sewage Separator

Model: CYSC-2

Processing power: 2m³/h

Separation effect: ≤15PPM

Matching motor power: 0.75kW

Electric heating power of oil collecting room: 4kW

Oil discharge method: automatic and manual

Domestic sewage treatment device

Model: WCBX-15

Type: Biochemical treatment

Processing power: 15people

Total power: 3.5kW

Carbon dioxide fire extinguishing device

Twenty two bottle(68L) Carbon dioxide cylinder cast valve, check valve, whistle, nozzle, connecting lock switch

Fungus-shaped ventilation head

Model: C800 CB/T295-2000

Fungus-shaped ventilation head

Model: C700 CB/T295-2000

Host sparks off silencer

Model: VTJZ-350

Auxiliary engine spark off silencer

Model: VTJZ-100

Bench Drill

Model: Z406

Maximum Drilling Diameter: 16mm

Motor Power: 0.6kW

Vise

Jaw Width: 150mm

Grinder

Model: S3ST-200

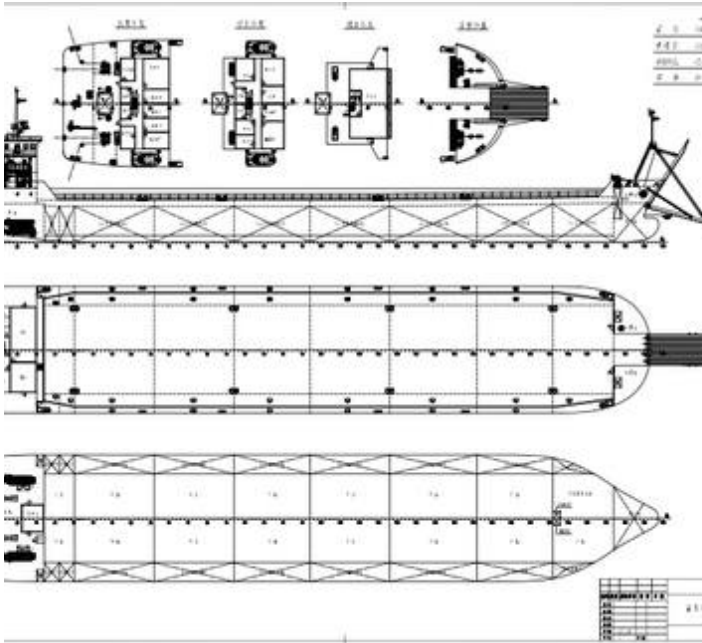
Manual Monorail

Model: WA2

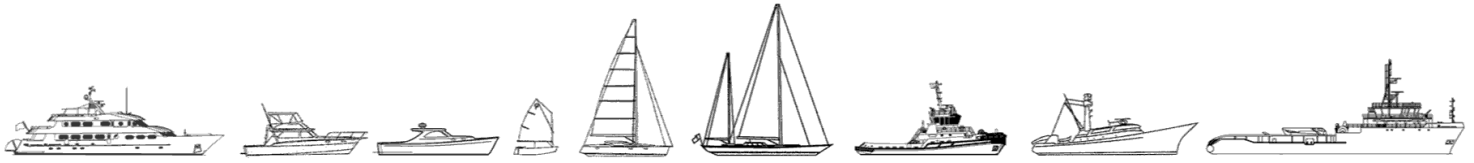
Lifting capacity: 2t

Chain Host

Model: HS2-A



The details of all vessels are offered in good faith but we cannot guarantee or warrant the accuracy of this information nor warrant the condition of the vessel. Any buyer should instruct their agents, or their surveyors, to investigate such details as the buyer desires validated. This vessel is offered subject to sale, price change, location or withdrawal without notice.



AUSTRALIA - BULGARIA - INDIA - INDONESIA - ITALY - MALAYSIA - NEW ZEALAND - PANAMA - PHILIPPINES - SINGAPORE - SPAIN - UK - USA - VENEZUELA - VIETNAM