



SEABOATS

MARINE BROKERS WITH A GLOBAL APPROACH

AUSTRALIA - BULGARIA - INDIA - INDONESIA - ITALY - MALAYSIA - NEW ZEALAND - PANAMA - PHILIPPINES - SINGAPORE - SPAIN - UK - USA - VENEZUELA - VIETNAM

sales@seaboats.net - www.seaboats.net

316ft 4300dwt LCT Barge



Listing ID - 4269

Description 316ft 4300dwt LCT Barge

Date 2008

Launched

Length 96.26m (315ft 9in)

Beam 14m (45ft 11in)

Note 2x Zibo ZC8170 Engine

Location China

Broker Franklin Taylor
franklin.taylor@seaboatsbrokers.com
+64 27 276 5383

Price USD 800,000

Built: December 2008

Class: CCS (China Classification Society)

Navigation area: A1+A2

Double bottom

LOA: 96.26m

Breadth: 14m

Depth: 5.20m

Laden Draft: 4m

Laden Water Displacement: 4452.700t

Reference cargo capacity on paper: 2000t

Normal DWCC: 3200t

Maximum Deadweight: 4300dwt

Main Engine: ZC8170, 2sets, TTL 1200kW, Zibo

The volume of enclosed space below the upper deck (V1): 6311.90m³

The volume of enclosed space above the upper deck (V2): 494.50m³

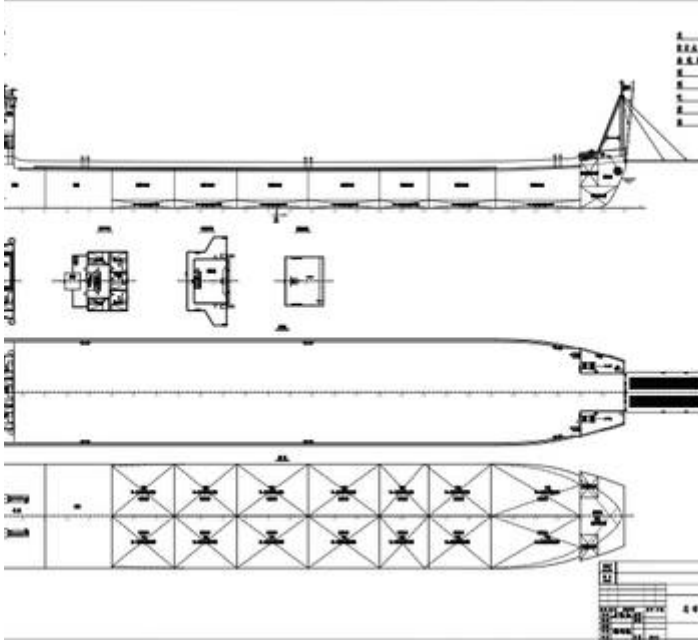
Portside Life Boat: 15ppl, 35kN

Life Raft: 15ppl * 2pcs

Free Deck Space: 76m(L) x 14m(W)

Next DD: March 31, 2023

Next SS: April 25, 2025













The details of all vessels are offered in good faith but we cannot guarantee or warrant the accuracy of this information nor warrant the condition of the vessel. Any buyer should instruct their agents, or their surveyors, to investigate such details as the buyer desires validated. This vessel is offered subject to sale, price change, location or withdrawal without notice.



