



# SEABOATS

MARINE BROKERS WITH A GLOBAL APPROACH

AUSTRALIA - BULGARIA - INDIA - INDONESIA - ITALY - MALAYSIA - NEW ZEALAND - PANAMA - PHILIPPINES - SINGAPORE - SPAIN - UK - USA - VENEZUELA - VIETNAM

[sales@seaboats.net](mailto:sales@seaboats.net) - [www.seaboats.net](http://www.seaboats.net)

## 103.8m 10200dwt LCT



### Listing ID - 4271

**Description** 10200 DWT LCT

**Date** 2000

**Launched**

**Length** 103.8m (340ft 6in)

**Beam** 25m (82ft)

**Draft** 5.65m (18ft 6in)

**Note** 2x Daihatsu

**Location** China

**Broker** Franklin Taylor

[franklin.taylor@seaboatsbrokers.com](mailto:franklin.taylor@seaboatsbrokers.com)

+64 27 276 5383

**Price** POA

This steel all-welded stone carrier with twin rudders twin fixed pitch propellers driven by two diesel engines is to be economical deck-type carrier for transferring stone at the Taiwan straits. The structure and the stability of the carrier is to be designed to meet concerned requirements for unrestricted service ship. Life saving apparatus and communication & navigation facilities are to be equipped to meet related requirements for deep sea-going ships.

CCS class (she was constructed under the standard of BV class)

Built Place/Year: China/2000.

Flag: Belize

Navigation Area: Great coastal waters

Vessel Type: Deck cargo barge

L.O.A: 103.8m

LPP: 99.80m

Breadth: 25m

Depth: 7.5m  
Draft: 5.65m  
Deadweight: 10200t  
Light Displacement: 2392.600 t  
Loaded Displacement: 12764.500 t  
Ramp Dimension: 16 m (length) \* 5 m (width)  
Laden Water Displacement: 12764.500t  
Reference Cargo Capacity: 9584t  
Max DWT: 10200T  
Deck Strength: 10 ton / m<sup>2</sup>  
Freeboard: 1.4m  
Max Height: 23.12m  
Ramp Installed: In 2014, size 16m\*5m  
G/T: 6744  
N/T: 3776  
Hull Material: Steel  
No. of Deck Layers: 1  
No. of transverse compartment's bulkhead: 7  
Type of Structure: Framework in longitudinal and transverse  
The volume of enclosed space below the upper deck(V1): 17140.03m<sup>3</sup>  
The volume of enclosed space above the upper deck(V1): 6326.34m<sup>3</sup>

Height Between Decks  
Compass deck to bridge deck: 2.35m  
Bridge deck to captain deck: 2.50m  
Captain deck to accommodation deck: 2.50m  
Accommodation deck to main deck: 2.50m

### **Accommodation**

Compliment: 18 person  
Crew Fixed: 16 people  
3 crew rooms with 2 berth each  
3 crew room with single berth  
1 electrical equipment room  
1 emergency generator room  
1 store and 1 laundry  
1 4.5m rescue boat with 1 set of SAF single-arm rotating hoist davit  
Boarding passage to free-fall lifeboat is set on port side.

Main Deck  
1 galley  
1 mess room  
1 crew room with 2 berth  
1 chief officer room  
1 washroom and 1 bathroom  
1 CO<sub>2</sub> room  
1 electrical equipment room (middle part)  
Deck hold painted from frame 19 to frame 154  
2 passages to fore part  
1 stock

1 boatswan's locker

1 painting room

Under Main Deck

Steering gear room

Emergency pump room

Fuel oil tanks

Engine room

Fresh water tanks

Ballast water tanks

Void and forepeaks are placed.

### **Engine**

M/E Type: 2 x DAIHATSU 6DLM 6 1692kW\*2/ 4604PS/750rpm

A/E Type: Nantong 6135Zcaf / 132.5KW X2/1500rpm

Generator: 3 MP-H-90-4 / 90KW

Emergency Generator: 1

Gear box: GWC45.49

Endurance: 3000 hrs

Fuel Oil Tank: 200.4m<sup>3</sup>

Fresh Water Tank: 131.6m<sup>3</sup>

Trial Speed: 11kn

Service Speed: 10kn

Air bottle

Shaft System

Starboard Stern Shaft: 1 x 265m

Starboard Middle Shaft: 1 x 220m

Portside Stern Shaft: 1 x 265m

Portside Middle Shaft: 1 x 220m

Propeller

Portside Propeller: Fixed Cu1 2880m

Starboard Propeller: Fixed Cu1 2880m

### **Electrics**

Power Distribution System: AC three-pharse three-wire insulated system

### **Equipment**

3 Anchor

2 Anchor windlass

2 rudders

Slinging ropes

### **Safety Equipment**

1 Liferaft

22 Life vest

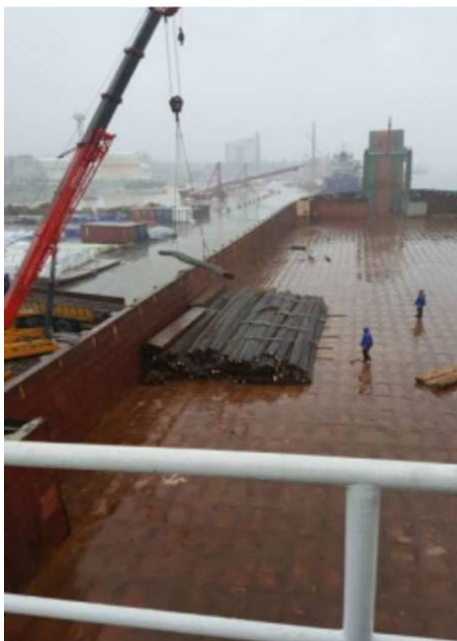
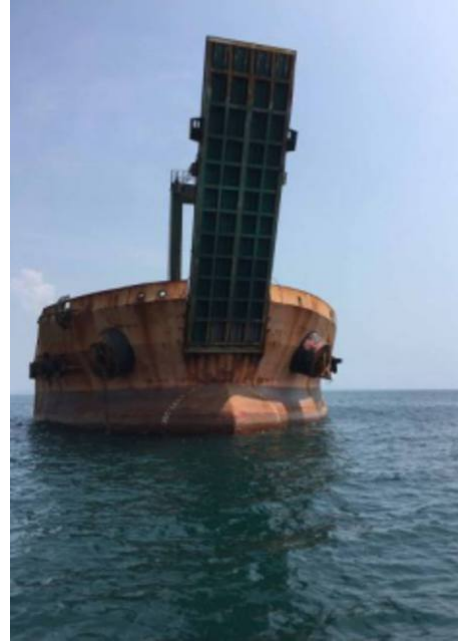
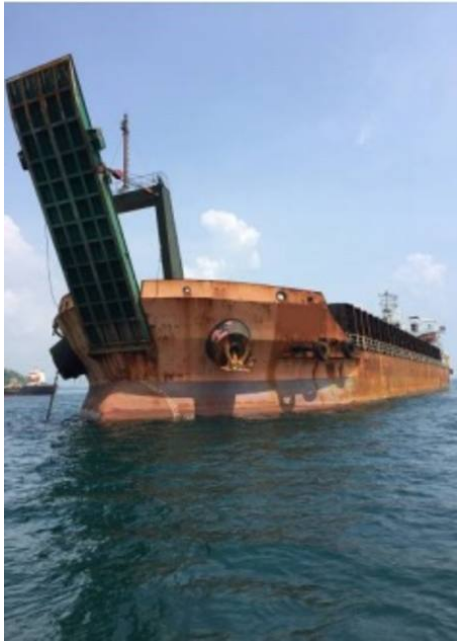
10 Life-ring

### **Navigation**

GPS: 1  
Magnetic Compass: 1  
Gyro Compass: 1  
Radar 1  
Radar 2  
AIS: 1  
Detector: 1  
Electronic chart: 1  
Rudder indicator: 1  
National Flag: 4  
Hooter: 1  
Large Signal Ball: 3  
Int'l Signal Flag: 2  
All around light  
Hand Flag: 1  
Tail light: 2  
Side light: 4  
Flash light: 1  
Gong: 1  
Signal clock: 1  
Anchor light: 2  
Red light: 2  
Mast light: 4  
MF / HF Radio installation  
VHF Radio installation  
Life-boat Two-way VHF radiotelephone apparatus  
Ship's earth-based station  
NAVTEX receiver  
Emergency radio position  
Rescue radar transponder: 1

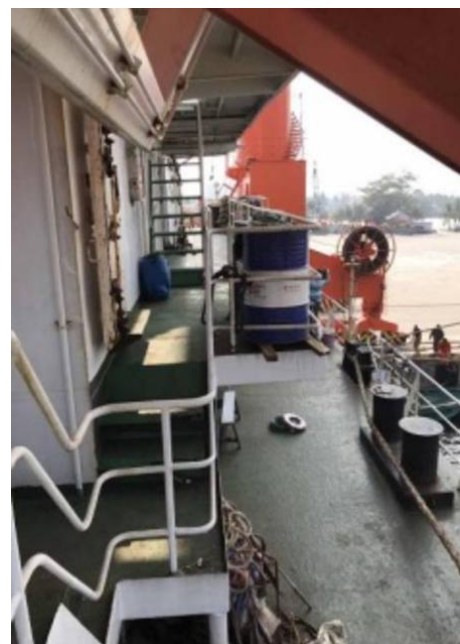
### **Certification**

Next SS: March 10, 2023























The details of all vessels are offered in good faith but we cannot guarantee or warrant the accuracy of this information nor warrant the condition of the vessel. Any buyer should instruct their agents, or their surveyors, to investigate such details as the buyer desires validated. This vessel is offered subject to sale, price change, location or withdrawal without notice.



