



SEABOATS

MARINE BROKERS WITH A GLOBAL APPROACH

AUSTRALIA - BULGARIA - INDIA - INDONESIA - ITALY - MALAYSIA - NEW ZEALAND - PANAMA - PHILIPPINES - SINGAPORE - SPAIN - UK - USA - VENEZUELA - VIETNAM

sales@seaboats.net - www.seaboats.net

22m Turkish Yacht Gulet



Listing ID - 4279

Description 22m Turkish yacht Gulet

Date 1990

Launched

Length 22.8m (74ft 9in)

Beam 6.20m (20ft 4in)

Draft 2.70m (8ft 10in)

Note 1x Cummin Engine

Location Chernomoretz , Bulgaria

Broker Georgi Savchev

georgi.savchev@seaboatsbrokers.com

+359 88 7228674

Price EUR 170,000

She is traditionally designed, transom stern gulet constructed for charter. She was constructed by Hasan Ali who is a famous Gulet builder in Turkey. She is launched in 1990. Upgraded in 2015 and 2020: Masts are replaced with 5mm, 2 steel masts. Painted with epoxy. Wires are replaced. The deck, aft and front seating areas are completely replaced. A new sun awning and sun energy panels installed within the same year. All periodic services are completed. The frames of the hull is mulberry wood. Super structure and interior is mahogany wood. She is 22.80 meters length and 5.60 meters beam. The draft is 2.70 meters. Powered with 420 HP Cummins main engine and 22 kVa generator. Supported with 24 V and 220 V. Accommodated with 6 double cabins. All of the cabins are ensuite with toilet and bathrooms. Fully air conditioned.

Date Launched: 1990

Refitted: 2015, 2020

Builder: Hasan Ali, Bodrum

Length: 22.8m

Beam: 6.20m
Draft: 2.70m
Hull Material: Wood
Deck: Teak
Cruising Speed: 10 knots

Engine & Machinery & Electronics

Engine: Diesel 1x 420 hp Cummin
Fuel Consumption Per Hour: 20 liters
Generator: Onan 24 kVa
Chart Plotter: Garmin
Radar: Garmin 36 NM
Echosounder: Garmin
Speed Log: Garmin
Electric System: DC 24 V ; AC 220 V
Solar Panel: 4 pcs
Battery Chargers
Inventor
VHF Salor 2048 and Navicom

Navigation Equipment

Garmin brand GPS
36 NM Radar
VHF
Speed log
Depth log

Tankage

Fuel Tank Capacity: 2500 L
Water Tank Capacity: 2500 L
Grey Water Tank: 2000 L

Sails and Rigging

Masts: 2 steel

Cabins & Galley

Fridge: 1
Deep Freezer: 1
Stereo System: Yes
Guest Cabin: 6 twin cabin
Crew Cabin: 1
Heads with Showers: 7
Saloon
Galley
Air condition in each cabin
Gas stove with extractor

Deck & Safety

Anchor Type: 2
Windlass: Hydraulic

Chain: 100m

Dinghy: 3.80 m joker out board engine – Honda 10 hp

Passarella: Stainless steel framed teak

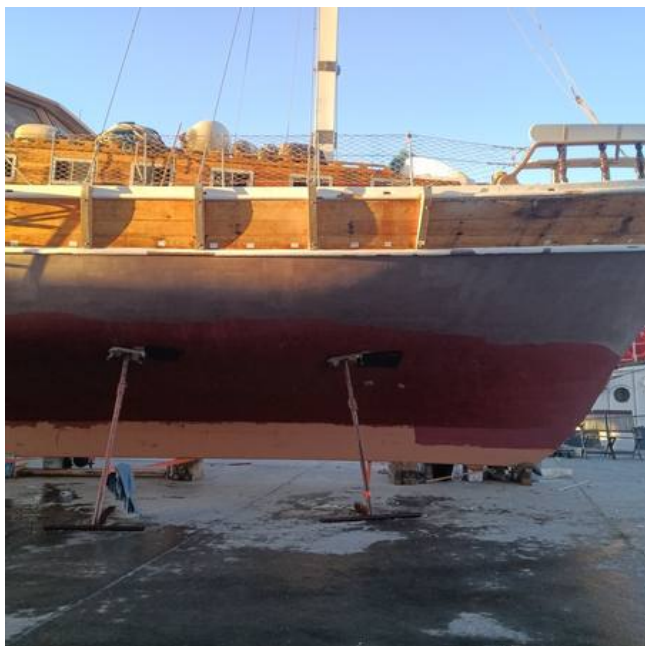
Engine Room Fire System: Automatic

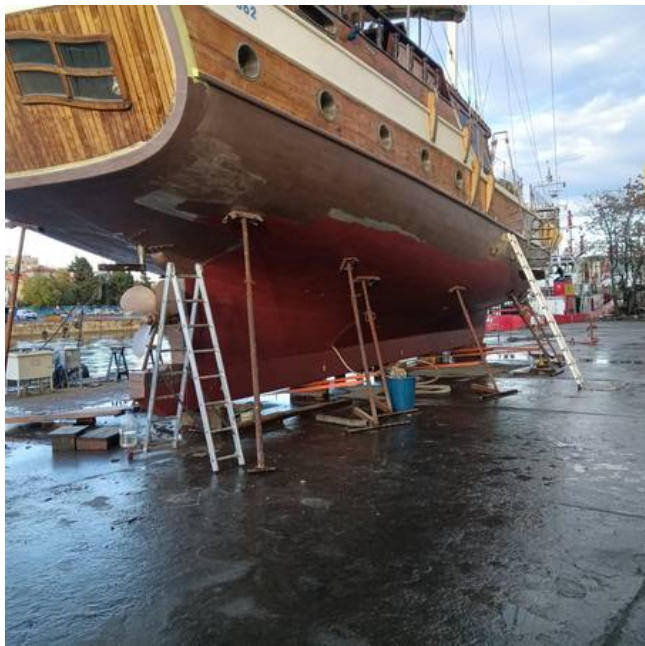
Life Raft: 12 persons

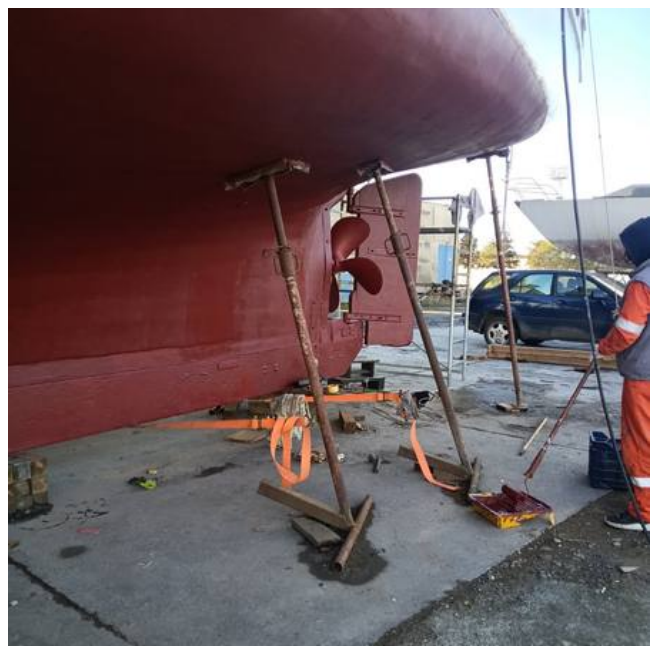
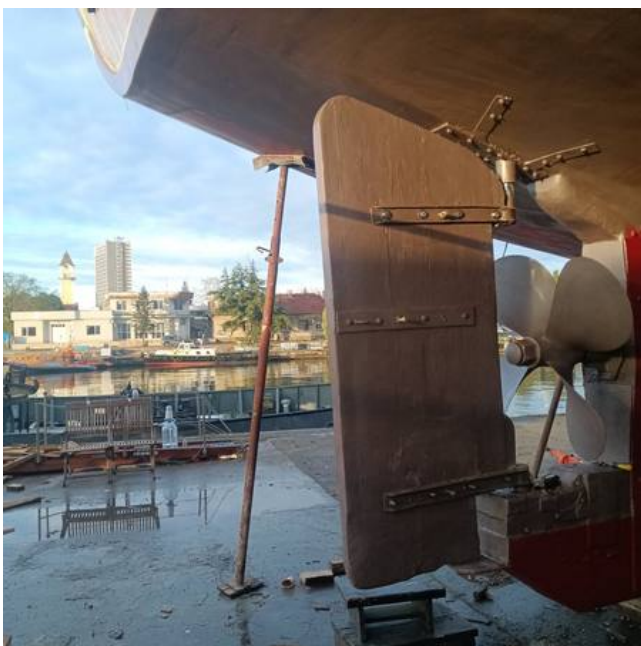
Life Ring: 6

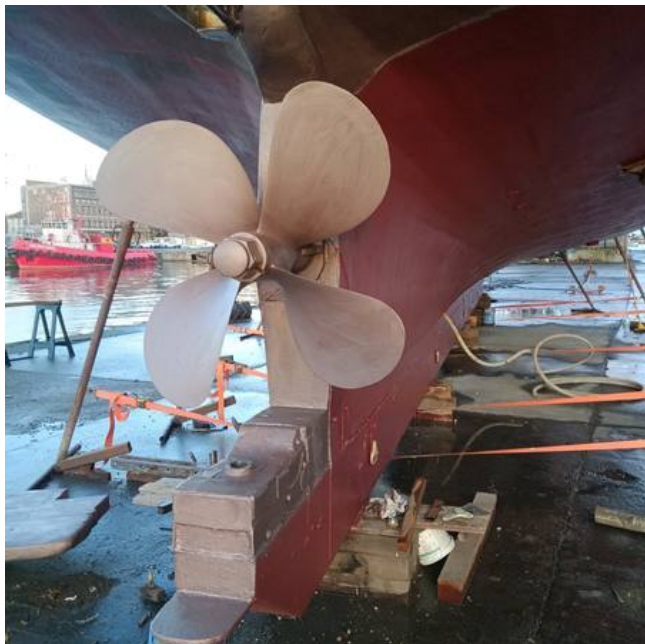
Fire extinguisher in each division









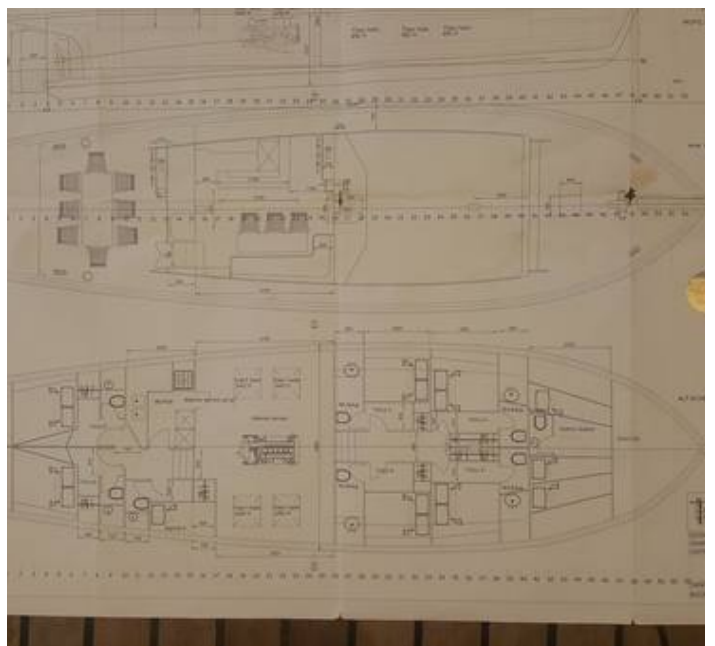




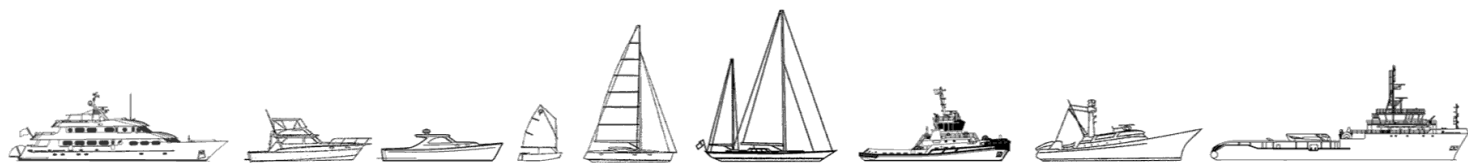








The details of all vessels are offered in good faith but we cannot guarantee or warrant the accuracy of this information nor warrant the condition of the vessel. Any buyer should instruct their agents, or their surveyors, to investigate such details as the buyer desires validated. This vessel is offered subject to sale, price change, location or withdrawal without notice.



AUSTRALIA - BULGARIA - INDIA - INDONESIA - ITALY - MALAYSIA - NEW ZEALAND - PANAMA - PHILIPPINES - SINGAPORE - SPAIN - UK - USA - VENEZUELA - VIETNAM