



SEABOATS

MARINE BROKERS WITH A GLOBAL APPROACH

AUSTRALIA - BULGARIA - INDIA - INDONESIA - ITALY - MALAYSIA - NEW ZEALAND - PANAMA - PHILIPPINES - SINGAPORE - SPAIN - UK - USA - VENEZUELA - VIETNAM

sales@seaboats.net - www.seaboats.net

61m (200ft) River Cruiser



Listing ID - 4297

Description 61m (200ft) River Cruiser

Date 2013

Launched

Length 61m (200ft)

Beam 12.2m (40ft)

Draft 1.4m (4.6ft)

Note 2x Cummins

Location Myanmar

Broker Ivan Colaco
ivan.colaco@seaboatsbrokers.com
+61 401 695 814

Vessel Type: Twin propelled river cruise ship

Length: 61m (200ft)

Beam: 12.2m (40ft)

Operational Draught: 1.4m (4.6ft)

Deadweight: 623 ts

Decks: 4 decks. Lower Deck, Main Deck, Upper Deck, Sun Deck

Built: Dawbon Shipyard, Outfitting at Thein Phyu Shipyard both Yangon, Myanmar

Completion: May 2013

Flag: Dual Flag Myanmar and Mongolia

Registry: Yangon, Myanmar, Ulaanbaatar, Mongolia

Class Myanmar: Department of Marine Administration (DMA). Class for inland powered vessels.

Class Singapore: Sing - Lloyd

Main Engine: 2x 350 HP Cummins NTA 855-M350 1800rpm Marine engines (propulsion only)

Propulsion: Twin Outboard rudder propeller propulsion NAV 151/152 system

Design Speed: 9.2 knots

Auxiliary Engine: 3x 200HP Cummins 6CTAA5.9-G1 engines (electricity only)

Navigation: All major navigational aids for inland vessels

Communication: All modern equipment installed

Fire Protection: Sprinklers installed in all cabins, heat and smoke detectors, break glass, alarm bells

Safety: All modern safety equipment installed

Air condition: Central air condition, water cooling, 4 chillers located behind galley on Upper Deck

Water: Sedimentation, Chemical Cleaning, Disinfection with Ultra-violet Light (UV) and Filtration with Reverse Osmosis (RO) system

Sewage: Micro biotic treatment units

Crew:

Marine Crew 14 (minimum requirement in Myanmar). Hotel staff as required by charterer including medical doctor, shop, massage, beauty salon staff and guides. Maximum crew accommodation 52 persons

Passenger Cabins:

25. All cabins have bathroom with toilet and shower. 9 different sized types

Passenger Cabin Sized:

1 suite 48 sqm on Upper Deck. Door to balcony in the bow of ship. Sliding doors toward the river

1 suite 38 sqm on Upper Deck. Door to balcony in the bow of ship. Sliding doors toward the river

1 suite 34 sqm on Main Deck. Sliding doors towards river

10 suites 26 sqm. Sliding doors towards river. 2 on Upper Deck, 8 on Main Deck

1 suite 24 sqm. Sliding door towards river

1 suite 23 sqm. Sliding door towards river on Main Deck.

3 suites 21 sqm. 1 on Upper Deck, 2 on Main Deck / Sliding door towards river

7 deluxe cabins 18.4 sqm on Lower Deck. Sliding door towards the river

Passenger Berths: 50

Crew Cabins: 18 crew cabins of various sizes on Lower Deck and Sun Deck (behind Bridge)

Restaurant: 178 sqm on Upper Deck

Galley: 77 sqm on Upper Deck

Office: 15.9 sqm on Main Deck

Boutique: 27 sqm on Upper Deck at the entry to the restaurant

Wine Cellar: 7 sqm on Upper Deck at entry to restaurant

Lounge and Bar: 114 sqm on Sun Deck

Medical: Doctors office on Lower Deck, 19 sqm

Open Sun Deck Aft: 274 sqm. Electric Controlled Awnings

Fitness Centre: 19 sqm on Sun Deck

Massage: 2 massage facilities on Sun Deck, each 14 sqm

Guest Toiles: 2 on Upper Deck, each 5 sqm

Sun Deck Forward: 135sqm with swimming pool

Swimming Pool: 17 sqm, 1.5m deep on Sun Deck

Laundry: On board laundry facility, Lower Deck

Facilities:

Observation Deck – With an open sun-deck area, lounge bar, and swimming pool, the observation deck is a perfect place for relaxation, magnificent riverside views, and cocktail parties. The Bar & Lounge is the perfect spot to relax with a refreshing cocktail.

Wellbeing and Fitness Area

Restaurant

Boutique

Accommodations:

State and Deluxe Cabins – 13 State Cabins and 9 Deluxe Cabins, featuring floor-to-ceiling sliding doors and Juliet balconies for perfect views of the river and life along its shores. Several Deluxe Cabins interconnect - ideal for families or friends traveling together. Amenities include:

- Double or twin beds
- Spacious en-suite bathroom stocked with locally made soaps
- Floor-to-ceiling sliding doors and Juliet balconies
- Locally commissioned artworks
- Seating area, writing desk and satellite TV
- Furniture crafted from gleaming hardwoods and opulent fabrics
- Satellite TV
- Air-conditioning
- iPod docking stations
- Generous closet space
- Luxurious linens and pillows
- Welcome flowers and fruit basket
- Complimentary bottled water replenished daily
- Slippers and bathrobes
- Complimentary morning tea and coffee
- Hair dryer

Balcony and Junior Suites – 2 Balcony Suites and 1 Junior Suite, featuring floor-to-ceiling windows with balconies. Balcony suites are located at the prow of the ship, offering unrivalled river views. Additional amenities include:

- King-sized bed or queen-sized twin beds
- Luxurious en-suite bathroom
- Floor-to-ceiling windows
- Juliet balcony in Junior Suite
- Walk out balcony in Balcony Suites
- Seating area, writing desk and satellite TV
- Butler service
- Complimentary spa treatment
- Complimentary mini-bar
- Fine linens, shimmering silks and exotic woods blend local style with modern luxury
- Satellite TV
- Air-conditioning
- iPod docking stations
- Generous closet
- Welcome flowers and fruit basket
- Complimentary bottled water replenished daily
- Slippers and bathrobes
- Complimentary morning tea and coffee
- Complimentary laundry service

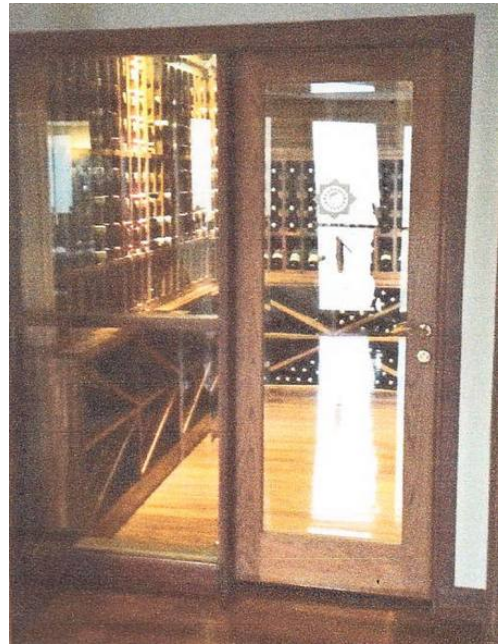
- Hair dryer
- Wireless internet

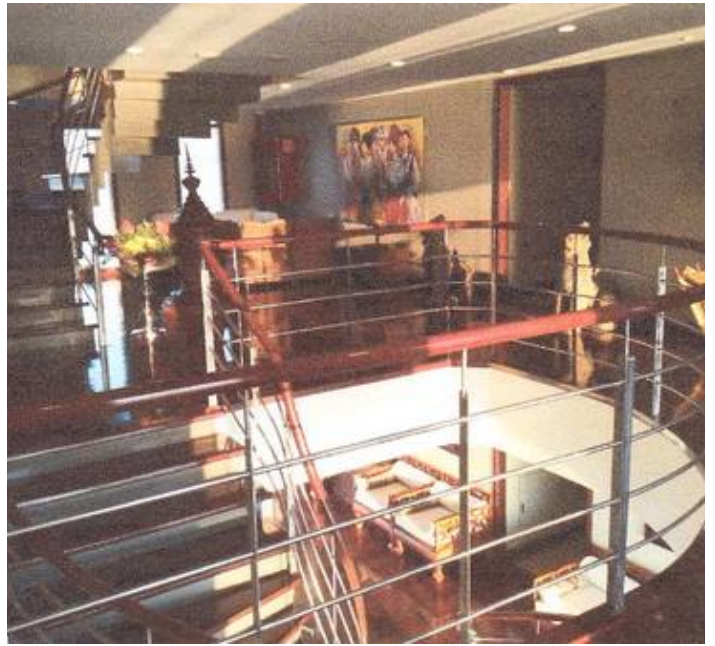




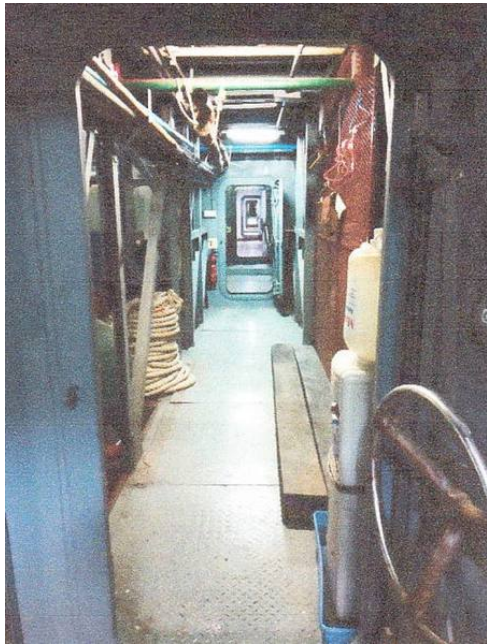




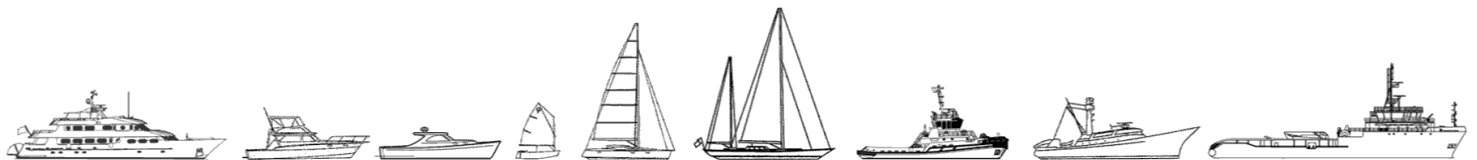








The details of all vessels are offered in good faith but we cannot guarantee or warrant the accuracy of this information nor warrant the condition of the vessel. Any buyer should instruct their agents, or their surveyors, to investigate such details as the buyer desires validated. This vessel is offered subject to sale, price change, location or withdrawal without notice.



AUSTRALIA - BULGARIA - INDIA - INDONESIA - ITALY - MALAYSIA - NEW ZEALAND - PANAMA - PHILIPPINES - SINGAPORE - SPAIN - UK - USA - VENEZUELA - VIETNAM