



# SEABOATS

MARINE BROKERS WITH A GLOBAL APPROACH

AUSTRALIA - BULGARIA - INDIA - INDONESIA - ITALY - MALAYSIA - NEW ZEALAND - PANAMA - PHILIPPINES - SINGAPORE - SPAIN - UK - USA - VENEZUELA - VIETNAM

[sales@seaboats.net](mailto:sales@seaboats.net) - [www.seaboats.net](http://www.seaboats.net)

## 48m Multipurpose Vessel / Utility Vessel.



**Listing ID - 431589**

**Description** 48m Multipurpose Vessel / Utility Vessel

**Length** 48m (157ft 5in)

**Beam** 11m (36ft)

**Draft** 3.5m (11ft 5in)

**Location** Malaysia

**Broker** Peter Cookson  
[peter.cookson@seaboatsbrokers.com](mailto:peter.cookson@seaboatsbrokers.com)  
+61 429 543 180

**Price** POA

### Basic Function

Transportation of equipment, & storage of fuel

Crew accommodation space

Offshore support

General assistance

### General

Type: 48 M Multi-Purpose Vessel

Year Built: 2002

Classification: American Bureau of Shipping (A1 + AMS for unrestricted services)

Official No. / Call Sign: 329772, 9WED4

Port of Registry & Flag: Kuching, Malaysia

Builder: Sealink Shipyard Sdn Bhd., Miri

IMO No.: 9278961

### **Main Dimension**

Length O.A: 48.00m

Beam: 11.00m

Depth: 3.50m

Designed Draft: 2.8m

Gross/Net Tonnage: 490/147

### **Tank & Loading Capacity (Appx.)**

Potable Water: 42.6m<sup>3</sup>

Fuel Oil: 405m<sup>3</sup>

Cargo FW: 193m<sup>3</sup>

Deck Area: 320m<sup>2</sup>

Deadweight: 597mt

Displacement: 1025.68mt

### **Performance**

Trial Speed: 11 knots at light ship, 10k at 85% MCR loaded

Power: 2 x 720 BHP @ 180 rpm

### **Machinery & Propulsion**

Main Engine: 2 x 720hp @ 1800rpm

Caterpillar 3412 c/w Twin Disc MG5202 gearbox

Propulsion: 2 x Fixed Pitch Propeller in Kort Nozzle

Generator: 2 x 95kW 415/3/50

Bow thruster: 3mt Schottel Tunnel jet type

Input 294 hp CAT3306TA

Control: Fwd & aft

Oily Water Separator

Sewage Treatment Plant: 24 Men

### **Navigation and Communication**

Complied with GMDSS A3 for vessel <500 GRT

### **Deck Machinery**

Bow Anchor: 2 x 900kg stockless anchor with 9 shackles anchor chain

Electro Hydraulic windlass Twin Gypsy c/w 2 wrapping heads c/w hydraulic-electro power pack

Reefer Point: 6 nos.

Capstan: 1 x 5mt

Tugger winch: 1 unit 10mt

### **Safety and Firefighting Equipment**

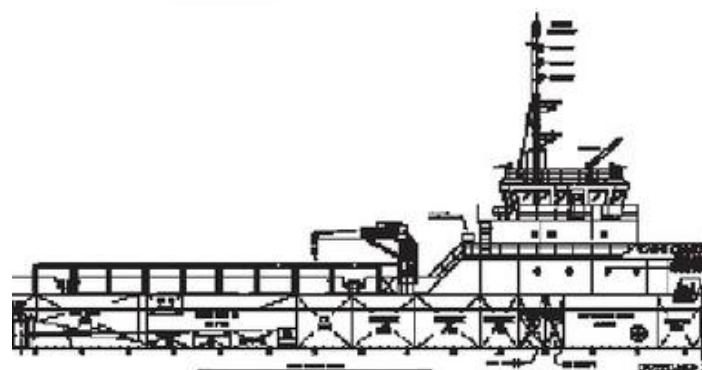
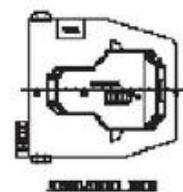
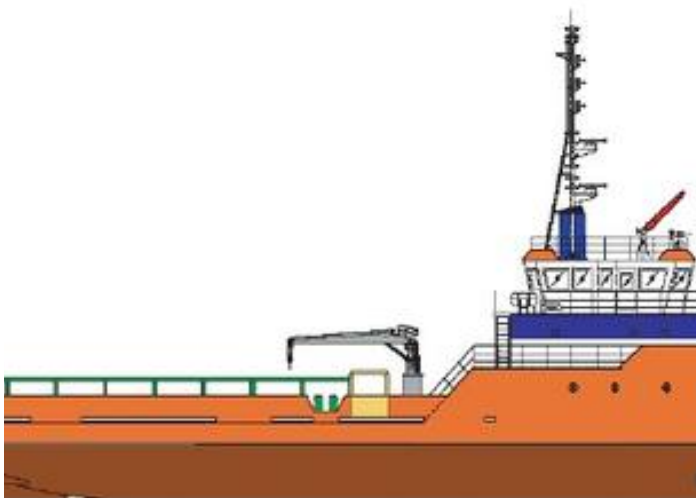
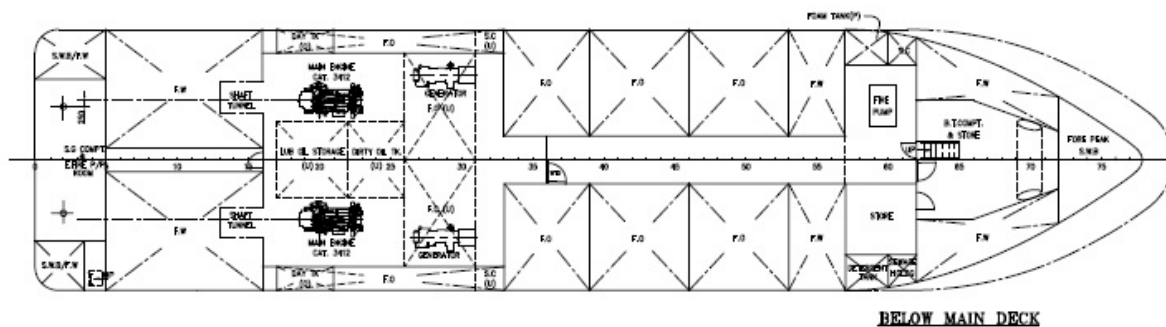
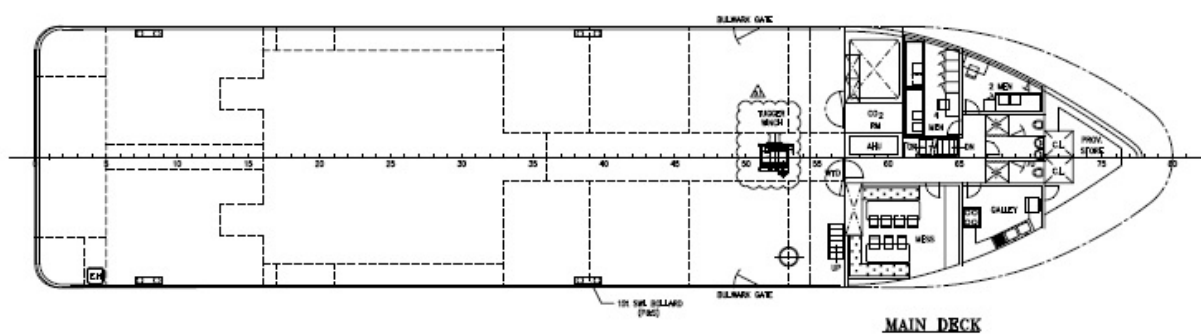
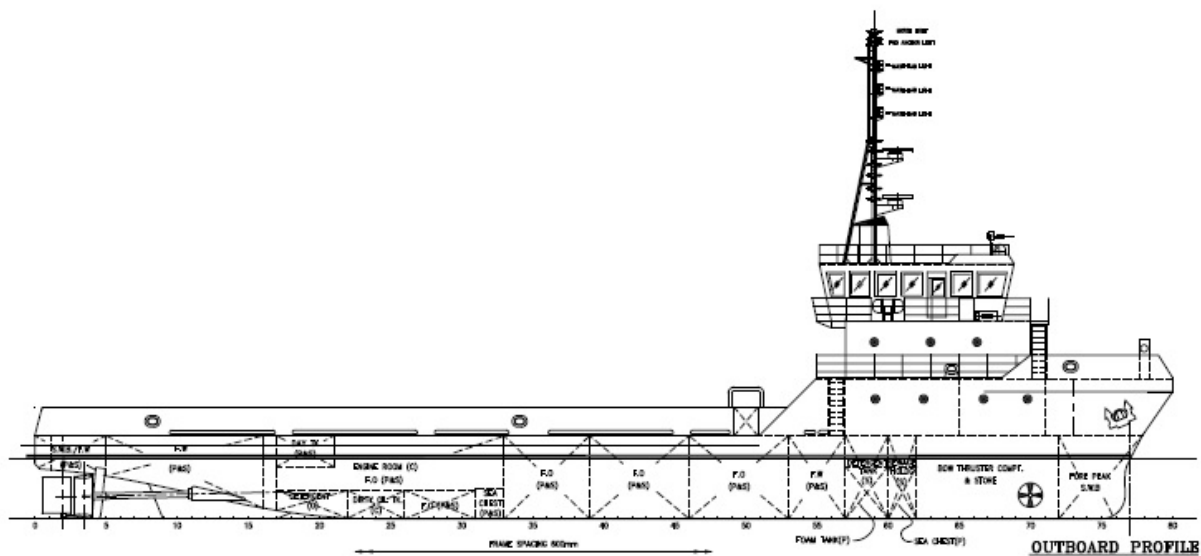
In compliance with Class requirement & / requirement of Flag administration. LSA is for 20-men complement.

Rigid Inflatable Boats: 6-men c/w 25BHP outbox engine

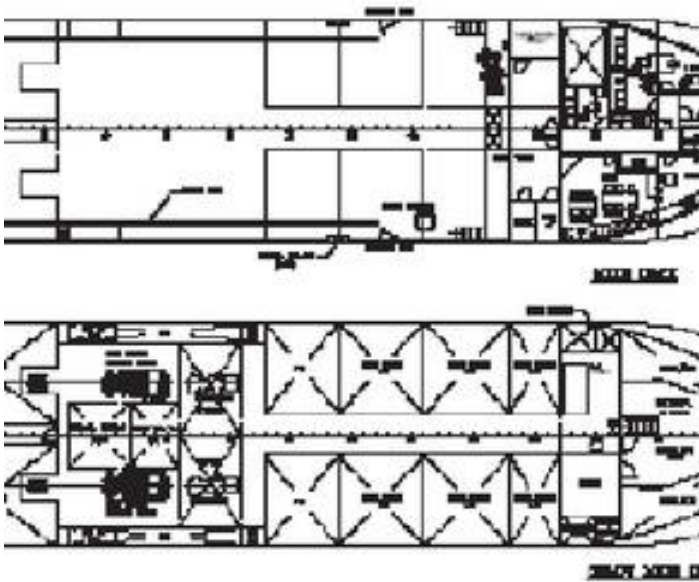
### **Accommodation**

Central Airconditioned: 18 berth including crew

System: Complement



























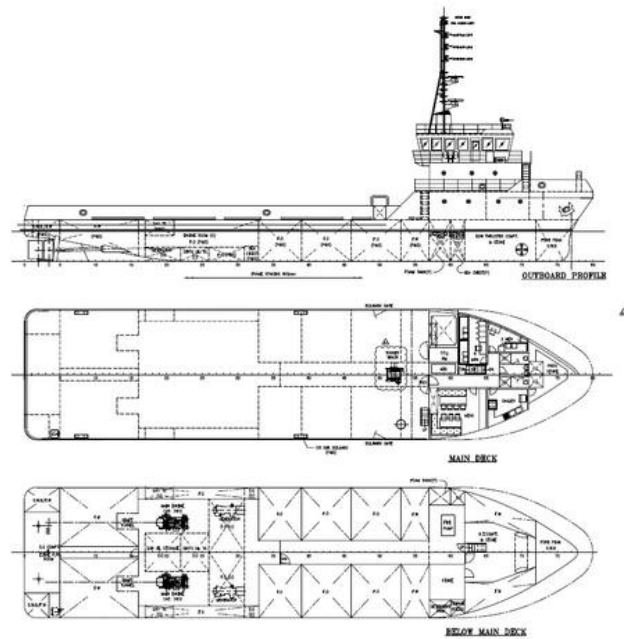




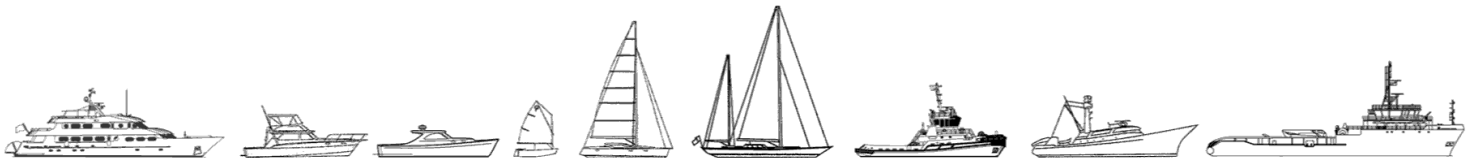








The details of all vessels are offered in good faith but we cannot guarantee or warrant the accuracy of this information nor warrant the condition of the vessel. Any buyer should instruct their agents, or their surveyors, to investigate such details as the buyer desires validated. This vessel is offered subject to sale, price change, location or withdrawal without notice.



AUSTRALIA - BULGARIA - INDIA - INDONESIA - ITALY - MALAYSIA - NEW ZEALAND - PANAMA - PHILIPPINES - SINGAPORE - SPAIN - UK - USA - VENEZUELA - VIETNAM