



SEABOATS

MARINE BROKERS WITH A GLOBAL APPROACH

AUSTRALIA - BULGARIA - INDIA - INDONESIA - ITALY - MALAYSIA - NEW ZEALAND - PANAMA - PHILIPPINES - SINGAPORE - SPAIN - UK - USA - VENEZUELA - VIETNAM

sales@seaboats.net - www.seaboats.net

26m Twin Screw Tug for Sale



Listing ID - 438725

Description	26m Twin Screw Tug
Date Launched	1972
Length	25.81m (84ft 8in)
Beam	9.49m (31ft 1in)
Draft	4.19m (13ft 8in)
Note	33T Bollard Pull
Location	Darwin, Australia
Broker	John Kearns john.kearns@seaboatsbrokers.com +64 21 400 805
Price	POA

Summary

Good pedigree 26m Twin Screw Tug. AMSA survey USL 2C.

Date of Delivery: 1972. Shipyard: Carrington Slipways Pty Ltd. Main Engine: 2x Mirrlees Blackstone, EWSZL 8M, 1491kW @ 900rpm. Fuel consumption approx.. 125 litres per hour free running. Propulsion: twin Screw steerable nozzles; Reintjes gear box WAV 1400. Bollard pull 33 tons. Winch Fwd.

Last major refit 2016, AMSA surveys extended to 2025

Details

Port of Registry: Darwin

Flag State: AUS

Date of Delivery: 1972

Shipyard: Carrington Slipways Pty Ltd, Australia

Main Dimension

Length Overall: 25.81m

Beam (moulded): 7.82m

Depth (moulded): 4.19m

Draught: 3.8m

Gross Tonnage: 245 tonnes

Performance

Main Engine: 2x Mirrlees Blackstone, EWSZL 8M, 1491kW @ 900rpm

Propulsion: Twin Screw fixed nozzle; Reintjes gear box WAV 1400

Bollard Pull: 33T Ahead, 18T Astern

Generators

Auxiliary Engine: No 1 Cummins 6BT

No 2 starboard Lister HRW

Equipment

Forward Towing Winch

Towing Hook: 50T

Tow Rope Storage Winch

Magnetic Compass: Henry Browne & Son (Sestrel)

GPS: JRC JLR – 6000

Radar: JRC JMA 2144

Echo Sounder: JRC JFC 20

Autopilot: Robertson AP45

VHF: Panasonic KXG2220A; GME Electrophone GX558

Capacities

Fuel: 46.23T (50,000 Litres)

Water: 25.9T (13,000 Litres)

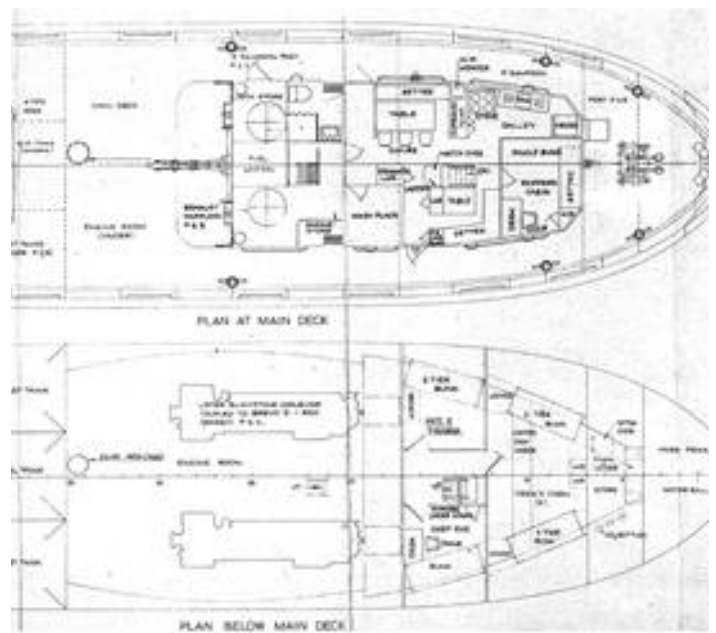
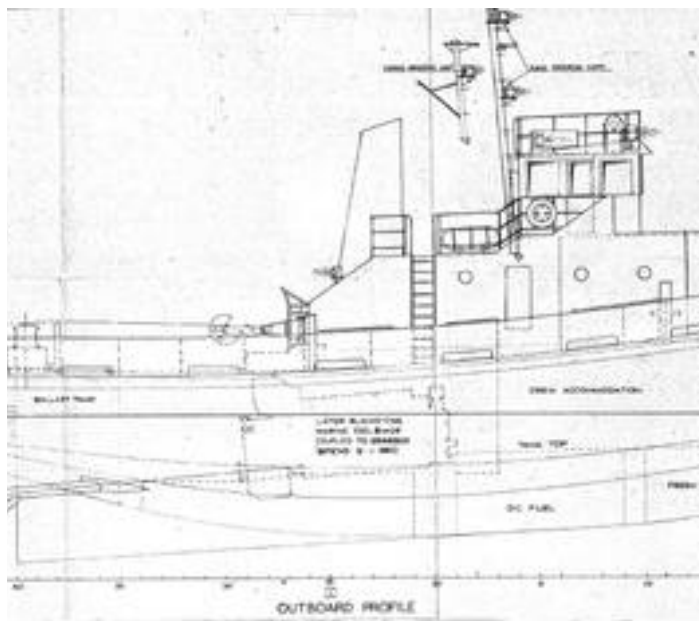
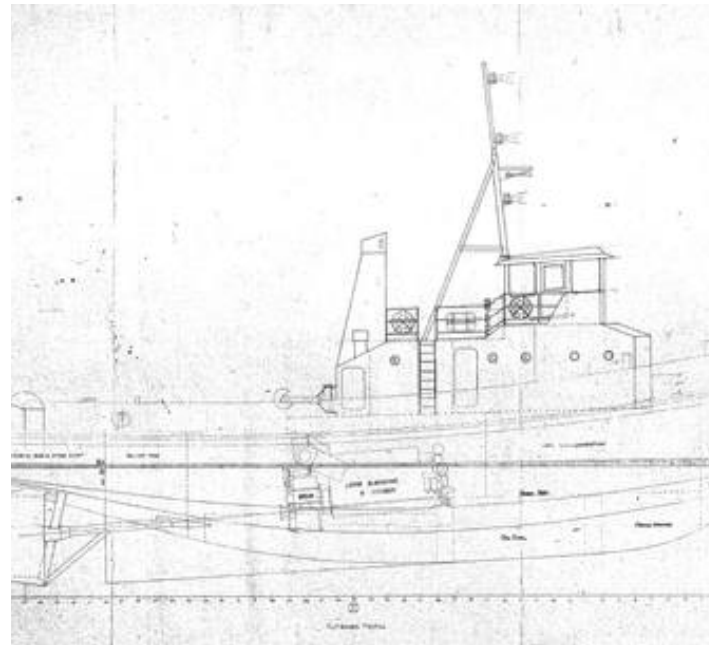
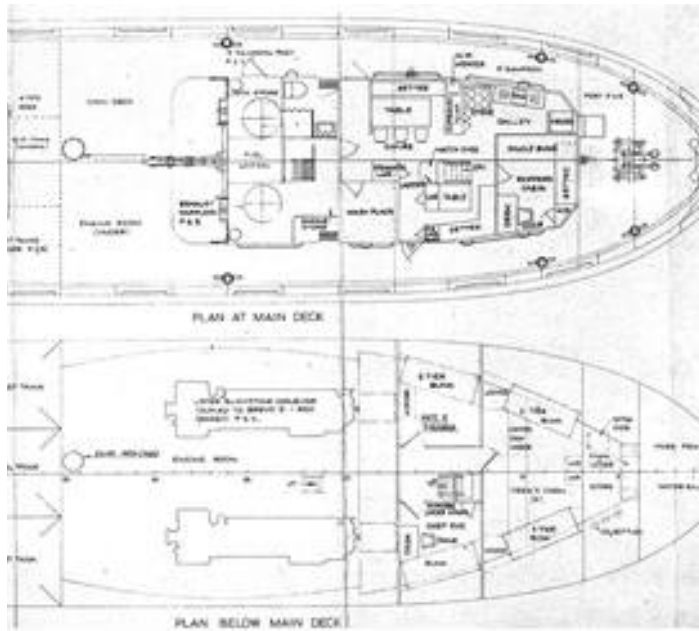
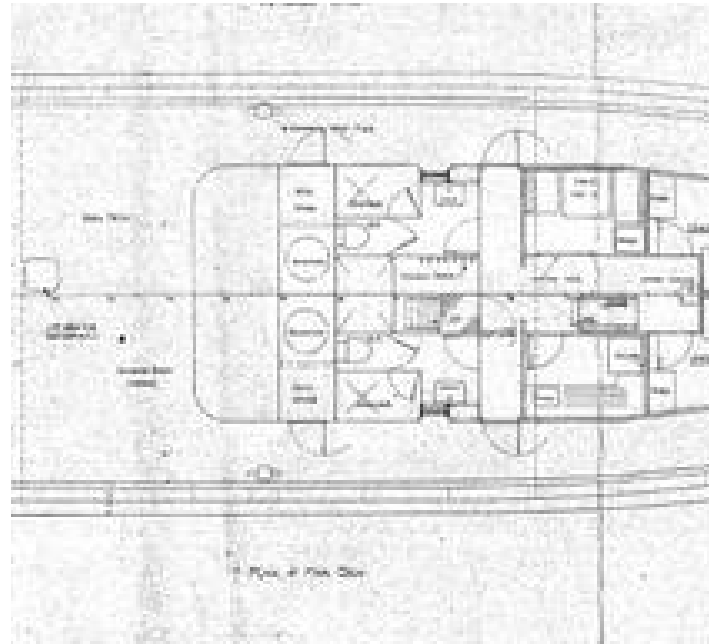
Lube Oil: 2T

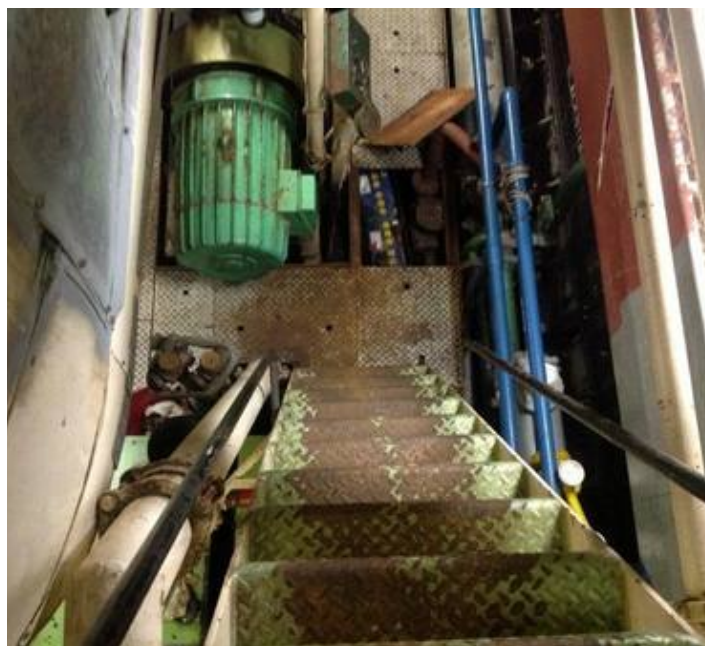
Ballast: 48T

Other

Fire Fighting Equipment: Engine Lister

Search light: Yes





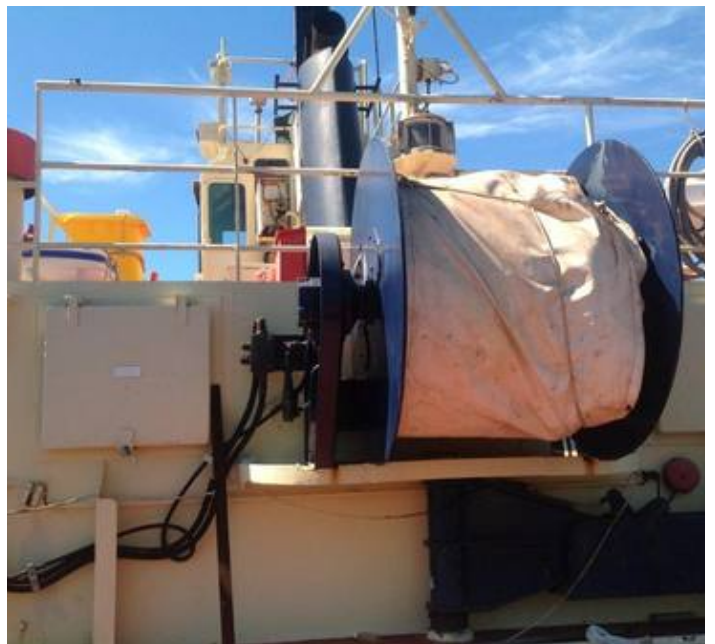


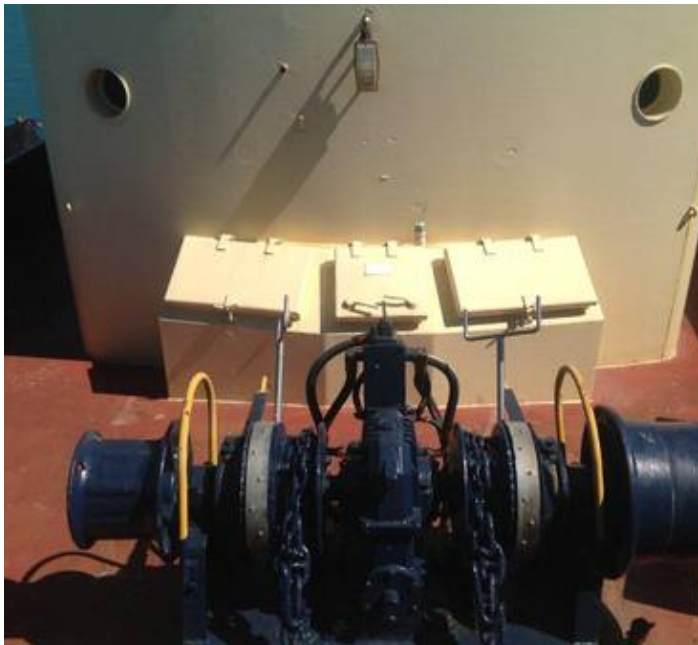










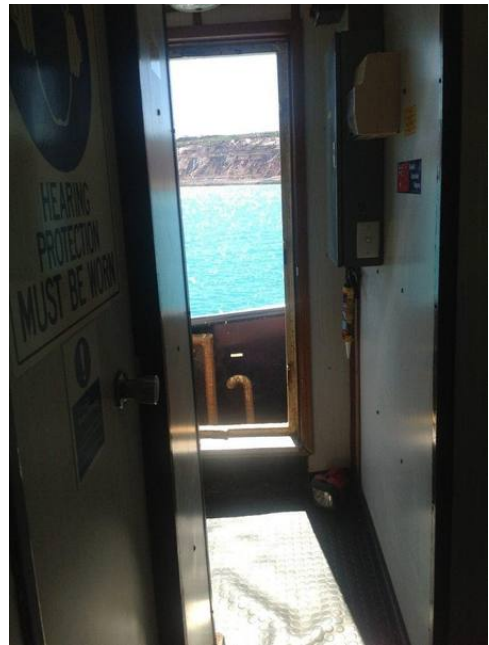


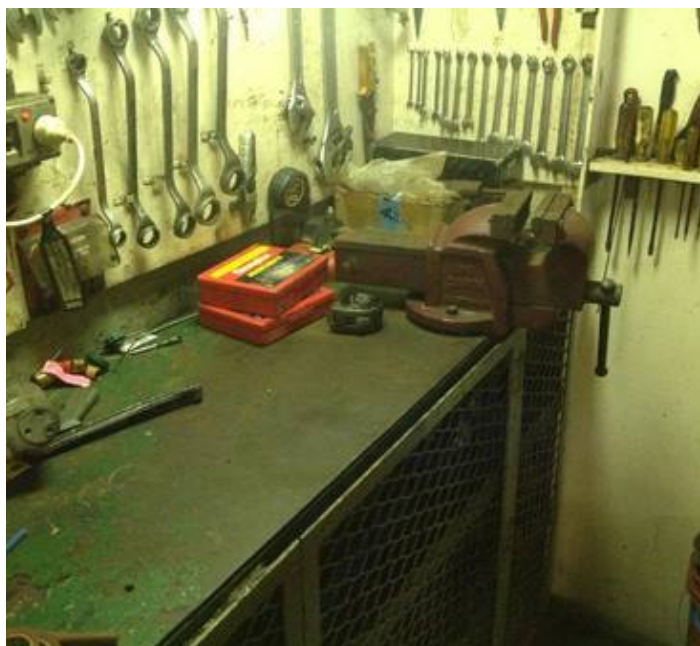














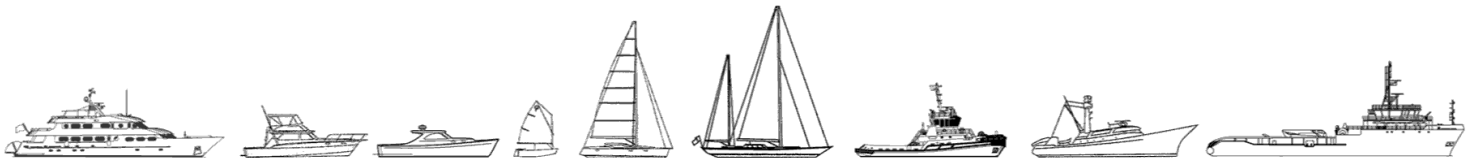








The details of all vessels are offered in good faith but we cannot guarantee or warrant the accuracy of this information nor warrant the condition of the vessel. Any buyer should instruct their agents, or their surveyors, to investigate such details as the buyer desires validated. This vessel is offered subject to sale, price change, location or withdrawal without notice.



AUSTRALIA - BULGARIA - INDIA - INDONESIA - ITALY - MALAYSIA - NEW ZEALAND - PANAMA - PHILIPPINES - SINGAPORE - SPAIN - UK - USA - VENEZUELA - VIETNAM