



# SEABOATS

MARINE BROKERS WITH A GLOBAL APPROACH

AUSTRALIA - BULGARIA - INDIA - INDONESIA - ITALY - MALAYSIA - NEW ZEALAND - PANAMA - PHILIPPINES - SINGAPORE - SPAIN - UK - USA - VENEZUELA - VIETNAM

[sales@seaboats.net](mailto:sales@seaboats.net) - [www.seaboats.net](http://www.seaboats.net)

## 300ft LCT Barge



### Listing ID - 4433

**Description** 300 ft LCT Barge

**Date** 2015

**Launched**

**Length** 91.40m (299ft 10in)

**Beam** 20.80m (68ft 2in)

**Draft** 4.50m (14ft 9in)

**Note** 2x Weichai Engines

**Location** China

**Broker** Franklin Taylor  
[franklin.taylor@seaboatsbrokers.com](mailto:franklin.taylor@seaboatsbrokers.com)  
+64 27 276 5383

**Price** USD 2.2 million

Type of Vessel: 300FT LCT BARGE

Built Time: Jul 2015

Keel Laid: April 3, 2015

Built Place: China

Class: CCS (China Classification Society)

Navigation Area: Coastal Waters

Operation Area: A1+A2

LOA: 91.40m

Length: 84.88m

Length of Upper Deck: 87.95m

LWL: 87m

Breadth: 20.80m

Depth: 6m

Laden Draft: 4.50m  
Laden Water Displacement: 7078.400T  
Reference Cargo Capacity on paper: 5100T  
Maximum Deadweight: 6000DWT  
GT: 2995  
NT: 1677  
Hull Material: Steel  
Deck Material: Steel  
Main Engine: CW6200ZC, 1200HP\*2, Weichai Power  
Location of Double bottom: Fr.29-Fr.119  
Next SS: July 25, 2025  
No. of Deck: 1  
No. Of Watertight Horizontal Bulkheads: 9  
Place Of Double Bottom: Fr29#-119#  
Structure Type: Transverse and longitudinal Frame Type  
No. of Crews: 10 persons

### **Freeboard**

Tropical: 1423 mm (R)  
Load line: 93 mm higher than X  
Summer: 1516 mm (X)  
The upper edge of line passed the disk center  
The breadth of fresh water of every freeboard exclude wood summer: 77 Tropical: 77 mm  
The breadth of wood freeboard  
Summer: 100  
Tropical: 100 mm

### **Equipment**

Anchors  
No. Of Outfitting: 916  
No. Of Anchors: 3  
No. Of Windlasses: 2  
Anchor Chain  
  
Rudders  
No. of Rudders: 2  
Main Steering Device Type: Electric hydraulic  
  
Rope Throwing Equipment: 4

### **Safety Equipment**

1 x Emergency fire pump  
2 x Main fire pump  
Manual CO2 Fire fighting system  
23 x Fire extinguisher container  
18 x Fire detection alarm  
1 x Fire extinguisher  
Portable foam gun: 1 piece  
Fireman's Outfit: 1 set  
Fire Pails: 4 pieces

Fire Axes: 2 pieces  
Lifesaving Equipment: 10  
Life Raft: 10ppl \* 2pcs  
Lifesaving Clothes: 10 pcs  
Lifebuoy: 2 with life rope, 2 with igniting light, 2 with light and smoke signal

### **Navigation**

1 AIS  
1 GPS  
1 Steering engine  
1 Magnetic compass  
1 Standard Magnetic compass  
1 Radar  
1 Search light  
1 Echo sounder  
1 Daylight signal light  
4 National flag  
1 Flute  
1 Ball  
3 Flash light  
1 Clock  
9 All-round light  
2 Mast light  
1 Tail light  
1 Signal flag  
2 Side light

### **Machineries**

No.: 2  
Maker: Weichai Power  
Model: CW6200ZC-16  
Type: Diesel engine  
Engine no.: 2115C000200  
Rated power(kw): 350.00 on cert, actual 1200HP  
Rated speed (r/min): 1000

2 Gearbox  
2 Propeller Shaft  
2 Middle Shaft  
1 Fixed type propeller

### **Electric**

Three phase AC three line insulated system  
3 Generating Equipment

### **Radio Equipment**

Receiver/sender  
Portable radio equipment of lifeboat and life raft  
Radiophone distress frequency receiver  
Broadcasting equipment

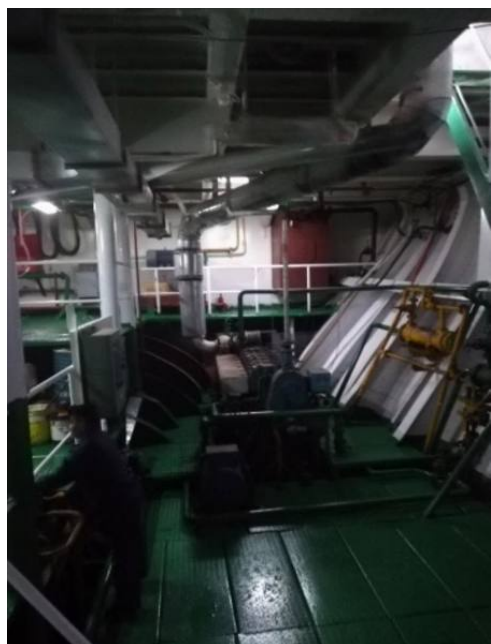
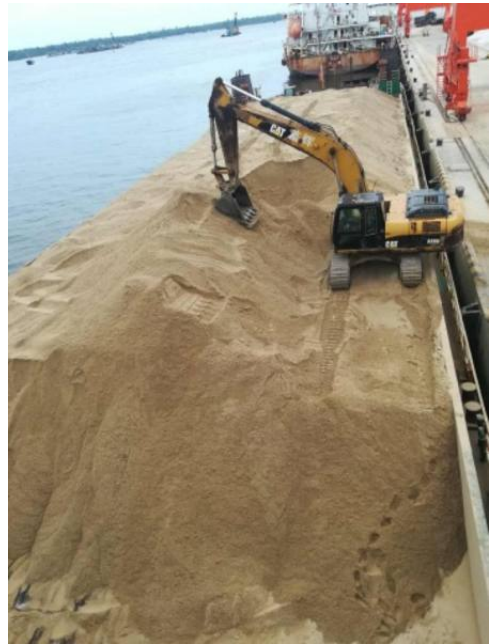
M(M/H)F radio device  
VHF radiophone  
NAVTEX receiver  
EPIRB  
Rescue radar transponder  
Rescue radar transponder

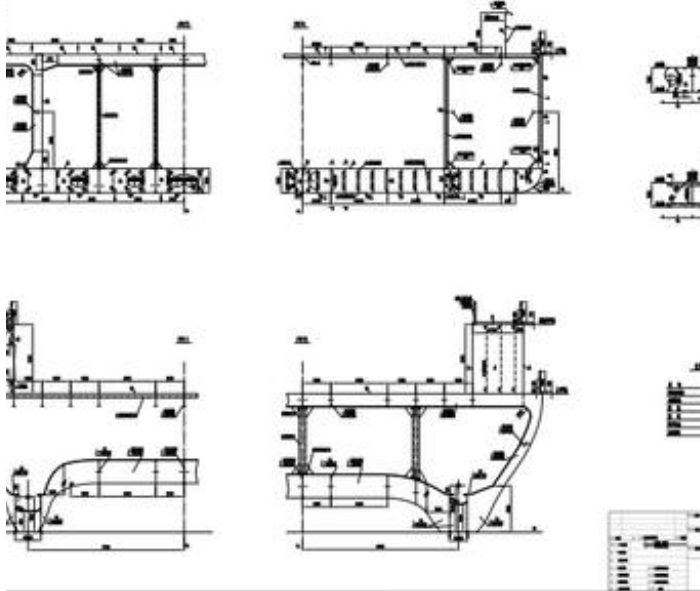
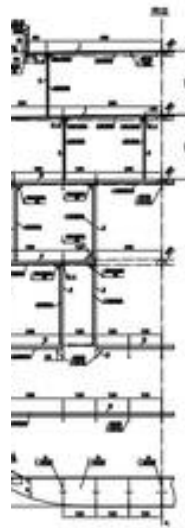
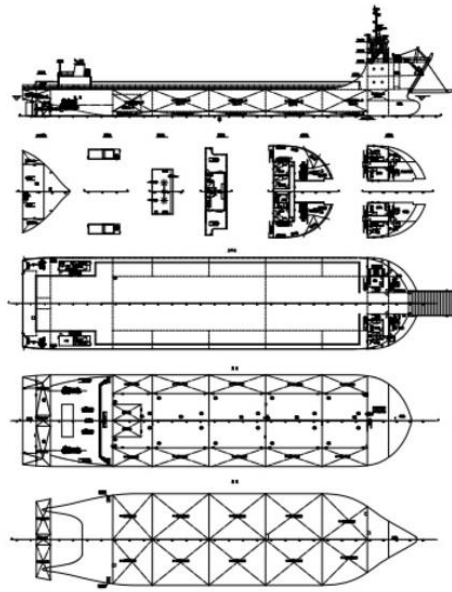












The details of all vessels are offered in good faith but we cannot guarantee or warrant the accuracy of this information nor warrant the condition of the vessel. Any buyer should instruct their agents, or their surveyors, to investigate such details as the buyer desires validated. This vessel is offered subject to sale, price change, location or withdrawal without notice.

