



SEABOATS

MARINE BROKERS WITH A GLOBAL APPROACH

AUSTRALIA - BULGARIA - INDIA - INDONESIA - ITALY - MALAYSIA - NEW ZEALAND - PANAMA - PHILIPPINES - SINGAPORE - SPAIN - UK - USA - VENEZUELA - VIETNAM

sales@seaboats.net - www.seaboats.net

17m Catamaran Workboat



Listing ID - 4459

| | |
|----------------------|--|
| Description | 17mt. Oceanographic Survey and Multi-Purpose Vessel |
| Date Launched | 2008 |
| Length | 16.9m (55ft 5in) |
| Beam | 7.5m (24ft 7in) |
| Draft | 1.68m (5ft 6in) |
| Note | 2x Vetus Deutz Engine |
| Location | Madeira, Portugal |
| Broker | Giuseppe Filippone |
| Price | EUR 900,000 |

This vessel was specifically designed as a submarine carrier with moon pool between the hulls, mainly for lifting/deploying and transporting research submersible vehicles. She has been regularly used as a bathymetric survey vessel and support vessel for manned submersible missions, as well as a platform for the necessary maintenance work on the sub..

Material: aluminium (Sealium 5383 H116)

Displacement: approx. 60 tons

Airdraft (approx.): 10,2m with mast, 5,3m lowered mast

Certificates: DNV/GL Hull 100 A5

CE Certification: A

Bathymetric survey equipment:

ELAC Multibeam Sonar SeaBeam 1050 & Hypack software

Coda Octopus F180 Motion Sensor

Klein 3000 Side Scan Sonar System with hydraulic winch and 2,200m cable
Marine Magnetism Magnetometer
Tracking/comms for diving vehicle:
USBL underwater tracking system LinkQuest 1500 HA with high power transponder
TN1510-AHR and Tracklink software
Underwater telephone (subphone 10 KHz)
Compressors: Bauer Oceanus air compressor 330bar (1 from 2014/200h, 1 from 2021/20h)
Lifting gear: 10 ton hydraulic crane for underwater vehicle (HOV, ROV, AUV)
Workshop including lathe, milling machine, tools and spares/materials.

Technical information:

Engines: 2x Vetus Deutz 170 Hp (125 kW), 6 cylinders, 2300 rpm
Type: BF 6M 2012 – DT66635D
2x electric engine control system
Running hours (approx.): port engine: 3100h, starboard: 2600h
Fuel tanks (aluminium):
Forward tanks: 2 x 2740 l
Aft tanks: 2 x 2640 l
Day tanks: 2 x 370 l
Hydraulic tank: 200 l with temperature and level gauge
Cooling system: 2x intercooling, wet exhaust

Propulsion and steering:

2 x 5 blade propeller
water lubricated propeller shaft
2x Propeller Nozzle (Poseidon)
Steering system: hydraulic
2x Aquadrive B20 thrust bearings
Gearbox: 2x ZF 63A-2,5 hydraulic Hurth-Marine , reduction: 2,52
Speed (approx.): 7.5 knots cruising speed at 1700 RPM (without sub)
7.0 knots cruising speed at 1700 RPM (with 8 ton sub)
9 knots top speed
Bow thruster: 2x 13 Kw hydraulic bow thruster MAX-Power Series 225HYD

Electric system:

12/24 VDC
230/400 VAC
400 Volt shore power connection

Batteries:

2x 24V, 70 Ah starter battery port engine
2x 24V, 70 Ah starter battery stb engine
1x 12V/58Ah Ah starter battery generator I.
1x 12V/58Ah Ah starter battery generator II.
1x 24V, 400 Ah domestic batterie (2x2 12V/200Ah Mastervolt)

Battery charger:

2 x Victron MultiPlus combi inverter/charger 24/3000
2 x Victron VE.Bus Multi Control

Isolation transformer: 6 kW isolation transformer 400Volt WALCHER 6,3
50m shorecable 400V
Earth-leakage breaker: present
Generator I: Paguro 8500 whisper set (main generator), 8,5 kVA 230 VAC @ 1500 RPM
Generator II: Paguro 1800 whisper set (submersible battery charge and Bauer air compressor 330bar), 18 kVA 400 VAC @ 3500 RPM
Inverter: 2 x Victron MultiPlus combi inverter/charger 24/3000
Air conditioning: 1 Portable
Fresh water tank (Aluminium): 2 x 1040 l
Water pressure system: electric water pump with pressure holding tank
Hot water system: 60 l boiler/water heater 230 Volt
Diesel water separator/filter (2 x SEPAR double unit):
Bilge pump: 4x electric pump 24V, 2x submersible pump 230V
Gas system: present

Accommodation

4 cabins
Berths:
2 forward: 2 x 1 pers
2 aft: 1 x 2 pers

Insulation:
80mm PU foamed insulation in living, working and storage space
80mm mineral wool in engine rooms (good sound insulation)
good quality sound dampening wall plates in engine rooms

Bathroom:
2x shower
hot & cold running water
wash basin with hot & cold running water
Toilet / Heads:
2x flush toilet, 24V Johnson silent Aqua T
washbasin with cold running water
Galley: in wheelhouse
Cooker: gas, 3-burner hob, stainless steel
Oven: Syndrox electric oven, 230V
Microwave: Sharp R-677D
Fridge / Refrigerator: INDEL 130 l/24 Volt
Freezer: Severin 45 l/230 Volt
Worktop: 14-17mm plywood with laminated surface (Formica type)
Wash basin: stainless steel sink
Water tap: hot & cold running water
Headroom:
Wheelhouse: 200cm
Workshop: 210cm
Work area: 210/285cm
Cabins: 185/202cm

Navigation equipment:

Furuno FCV-295 depth/echosounder with 50khz transducer

Simrad chartplotter/GPS CX44
Icom IC-M421 VHF with DSC
Icom IC-M330 VHF with DSC
Clipper Navtex
Simrad autopilot AP21
Simrad radar
Simrad windset IS20
1x compass analog: Ritchie
2x compass digital: Robertson + KVH-Azimuth1000
3x camera monitor system stern looking view
Icom GMDSS
2x Icom portable VHF

Equipment :

7x window wiper EXALTO KK-HD
navigation lights
radar reflector
Mast: aluminium mast
Boom: aluminium, extendable for lifting use (test load: 1t at 90° port and stb)

Equipment:

Anchor equipment: electric anchor winch THOR HR4000 with remote control
1x Pool main anchor
1x stern anchor
70 m anchor chain
bow roller
Boarding ladder: present
2 work (swimming) platforms with antislip
Dinghy: Aluminium RIB HIGHFIELD 310 (2018)
Yamaha outboard engine 15 Hp (2019)
Steering console with steering wheel and controls
Davits:
A-frame with electric winch (Superwinch C1000, 24V), remote control

Safety:

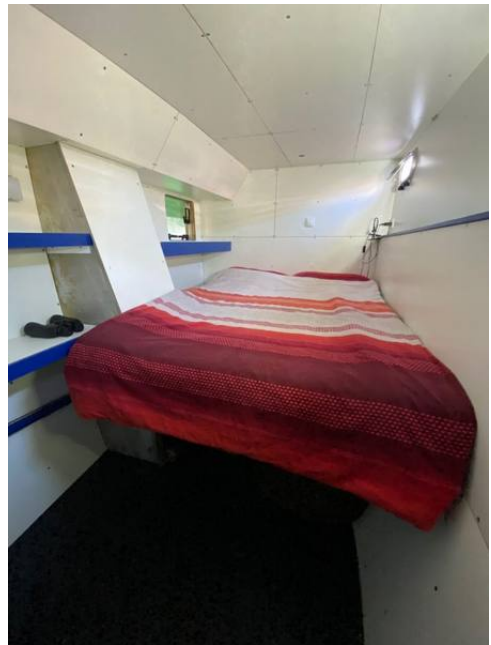
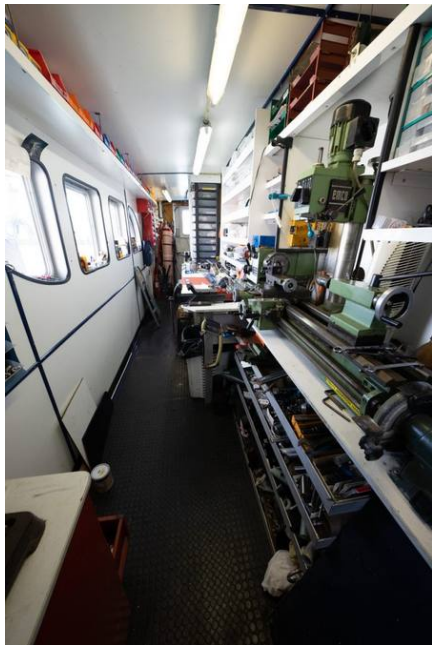
2x automatic fire extinguishing system engine rooms
6 fire extinguishers
4 life buoys
flares
10 pax liferaft (2020) with certificate
life jackets

Additional information:

deck shower
deck lights
gangway port and stb

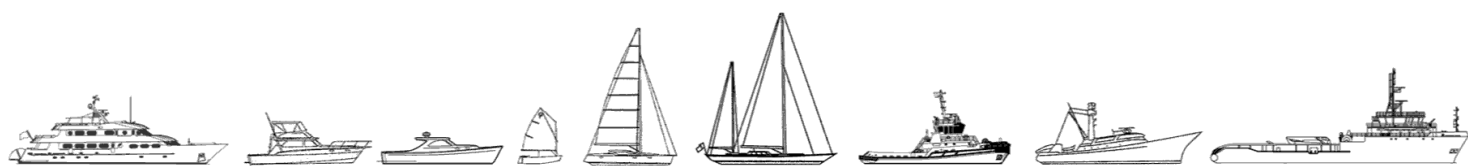








The details of all vessels are offered in good faith but we cannot guarantee or warrant the accuracy of this information nor warrant the condition of the vessel. Any buyer should instruct their agents, or their surveyors, to investigate such details as the buyer desires validated. This vessel is offered subject to sale, price change, location or withdrawal without notice.



AUSTRALIA - BULGARIA - INDIA - INDONESIA - ITALY - MALAYSIA - NEW ZEALAND - PANAMA - PHILIPPINES - SINGAPORE - SPAIN - UK - USA - VENEZUELA - VIETNAM