



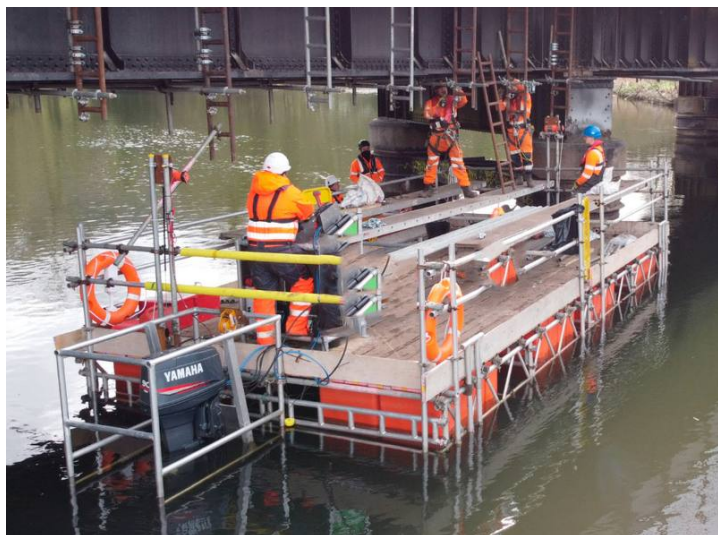
# SEABOATS

MARINE BROKERS WITH A GLOBAL APPROACH

AUSTRALIA - BULGARIA - INDIA - INDONESIA - ITALY - MALAYSIA - NEW ZEALAND - PANAMA - PHILIPPINES - SINGAPORE - SPAIN - UK - USA - VENEZUELA - VIETNAM

[sales@seaboats.net](mailto:sales@seaboats.net) - [www.seaboats.net](http://www.seaboats.net)

## 8m Flattop Barge For Sale & Charter



### Listing ID - 4471

**Description** 8m Flattop Barge For Sale & Charter

**Date** 2023

**Launched**

**Length** 8m (26ft 2in)

**Beam** 4m (13ft)

**Draft** 0.20m (7in)

**Note** 2x Yamaha Engines

**Location** UK Coast

**Price** POA

Built: 2023, United Kingdom

Hull material: Steel

Class Society and Notation: British

### PRINCIPLE DIMENSIONS

Length Overall: 8.00m

Breadth: 4.00m

Draft: 0.20m

### MACHINERY & PROPULSION

Total power output: 120 bhp

Main Engines: 2x Yamaha high thrust

Speed cruising: 5 knots

### ADDITIONAL INFORMATION

These are new platforms built as new.

Ideal for commercial projects in catagorised waters, harbors, ports, estuaries and shallow near water projects.

Full designs, stability & structural assessments and certification can be provided in line with various standards (Inc: MCA, IMO, PLA, EN1993-1-1-2005, DNVGL-T-0378, TG20:13, BS5975:2019, BS EN 1990:2002+Al:2010 & Lloyd's Register Code for Lifting Appliances in a Marine Environment, July 2021 (CLAME, 2021))

Extras: As well as the basic pontoon we have a wide range of attachments including high thrust engine pods, cranes, deck winches, spuds, handrails etc.

Shipping: All our units strip down to fit in a standard shipping container and can be assembled in under a day.

Uses: Towing, access, diving, crew transfers, general workboat, cargo handling, spill control. Very easy to operate, turns on its own length.

Listed here is our most popular size, the 8m x 4m model:

Deck Winch: 2t

Crane: 2.8 - 6tm

Deck Area: 32m<sup>2</sup>

Freeboard: LS 0.6m

Floats: 16 or 20 x Small

Buoyancy: 8m<sup>3</sup> or 10m<sup>3</sup>

Beams: 450mm

Payload: 4t

Self-Weight: 2.6t

Crane Lift Points: Yes

Handrails Full double handrails & kickboards

Sea Fastenings 4 x hooks @ 800kg each

Deck Heavy duty wood deck 1t/m<sup>2</sup>

Access 2 x hinged gate

Safety Pack - Compliant with MGN 469 (Cat A,B,C or D)

Life Rings 2 x one with line Throw Line x 1 Lifejacket All crew Radar

Reflector x 1 First Aid Kit X 1 Life raft Cat D

Fire Extinguisher x 1 VHF x 1 Flare Pack Cat C & D

Spill Kit x 1 Fog Horn x 1 Knife x 1

Anchor & Chain x1 Spotlight x1 Nav Lights & Shapes



The details of all vessels are offered in good faith but we cannot guarantee or warrant the accuracy of this information nor warrant the condition of the vessel. Any buyer should instruct their agents, or their surveyors, to investigate such details as the buyer desires validated. This vessel is offered subject to sale, price change, location or withdrawal without notice.

