



SEABOATS

MARINE BROKERS WITH A GLOBAL APPROACH

AUSTRALIA - BULGARIA - INDIA - INDONESIA - ITALY - MALAYSIA - NEW ZEALAND - PANAMA - PHILIPPINES - SINGAPORE - SPAIN - UK - USA - VENEZUELA - VIETNAM

sales@seaboats.net - www.seaboats.net

300 TEU MPP Container Ship



Listing ID - 4478

Description 300 TEU MPP Container Ship

Date 2010

Launched

Length 99.24m (325ft 7in)

Beam 15.80m (51ft 10in)

Draft 3.465m (11ft 4in)

Location China

Broker Franklin Taylor
franklin.taylor@seaboatsbrokers.com
+64 27 276 5383

Price USD 1.98m

Built Date: December 18, 2010

Navigation Area: Great Coastal Waters

Class: CCS

Loa: 99.24m

Length: 93.18m

Laden Waterline Length: 95.69m

Breadth: 15.80m

Depth: 7.50m

Light Draft: 3.465m

Laden Draft: 6.000m

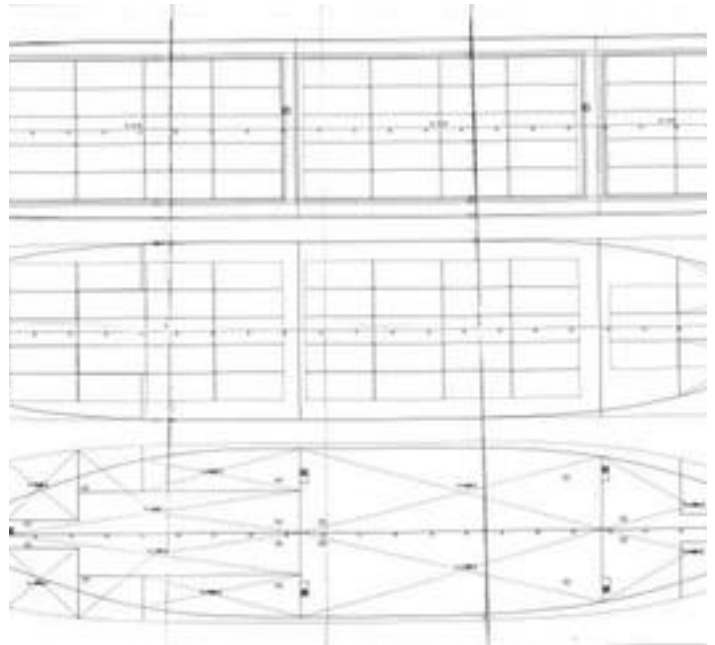
Laden Water Displacement: 7455.900t

Light Water Displacement: 1983.100t

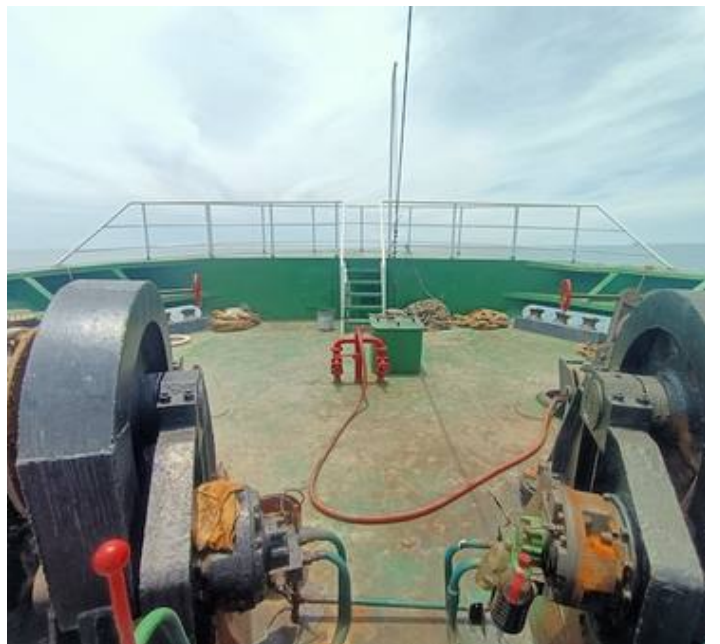
Type Of Structure: Framework in Transverse and Longitudinal

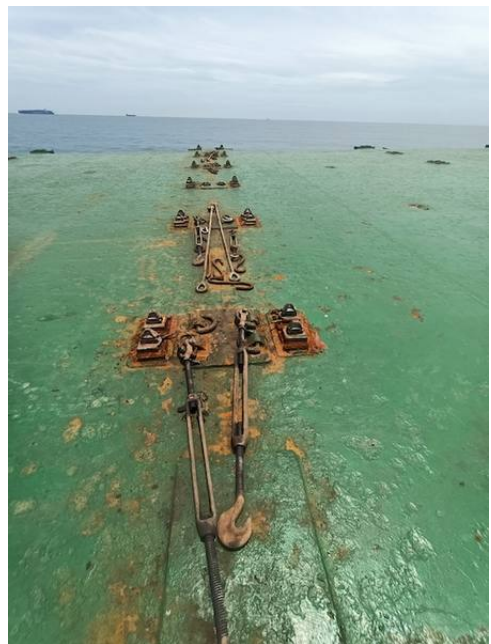
Navigation Area: A1+A2

Hull Material: Steel
No. Of Transverse Compartments Bulkhead: 5
Location Of Double Bottom: Fr 7#-139#
Additional Strengthening Structure: Ice Area Strengthening
Cargo Hold: 3
Hatch Type: Steel Weathertight
Quantity of Outfitting: 935
Quantity of Anchor: 3
Quantity of Anchor Windlass: 2
Main Engine: 8dl-32, 2353kW, 600rpm, Japan Osaka, Made in Oct 2006
Generator: 200kW * 2 Sets, 120kW * 1 Set, 64kW * 1 Set
Gross Tonnage: 2931
Net Tonnage: 1641
Crew: 15ppl
The Volume of Enclosed Space Below the Upper Deck (v1): 8185.89m³
The Volume of Enclosed Space Above the Upper Deck (v2): 2268.23m³

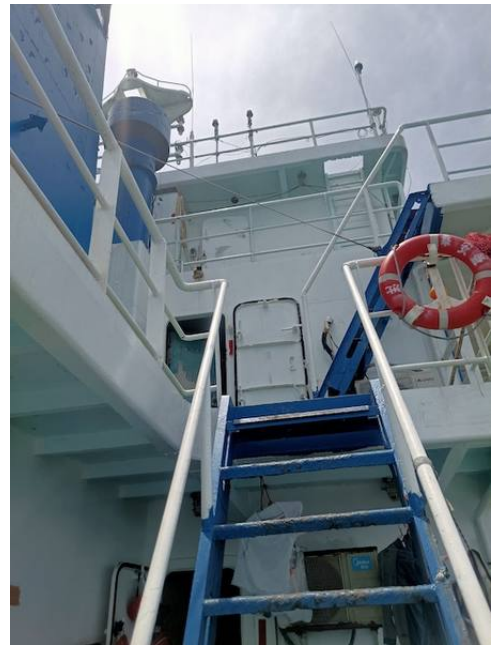
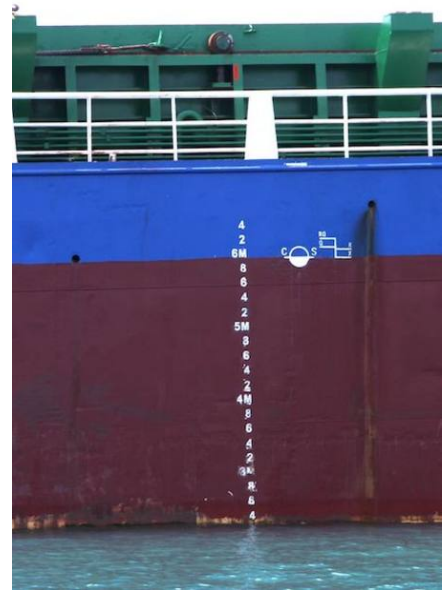




























The details of all vessels are offered in good faith but we cannot guarantee or warrant the accuracy of this information nor warrant the condition of the vessel. Any buyer should instruct their agents, or their surveyors, to investigate such details as the buyer desires validated. This vessel is offered subject to sale, price change, location or withdrawal without notice.



