



SEABOATS

MARINE BROKERS WITH A GLOBAL APPROACH

AUSTRALIA - BULGARIA - INDIA - INDONESIA - ITALY - MALAYSIA - NEW ZEALAND - PANAMA - PHILIPPINES - SINGAPORE - SPAIN - UK - USA - VENEZUELA - VIETNAM

sales@seaboats.net - www.seaboats.net

25000t Self-suction & Self-discharge Vessel (3-in-1 Dredger) For Sale



Listing ID - 4495

Description 25000t Self-suction & Self-discharge Vessel (3-in-1 Dredger) For Sale

Date Launched 2022

Length 170.46m (559ft 3in)

Beam 26m (85ft 3in)

Draft 7.05m (23ft 1in)

Note Guangchai Self-sail Engine

Location China

Broker Franklin Taylor
franklin.taylor@seaboatsbrokers.com
+64 27 276 5383

Price USD 16 million

This ship is a self-priming and self-unloading sand ship propelled by a stern model, twin engines, twin propellers, twin rudders, and diesel engines; There are four deckhouses at the rear. The cargo hold area is double bottom and double side, bottom and side are longitudinal frame structure. Behind the first anti-collision bulkhead is a double-bottom single-side transverse frame structure, and the bow and stern tip cabin and engine room are single-bottom single-side transverse skeleton structure, six cargo holds are arranged in the cargo area.

This ship is a cargo ship that uses its own belt conveyor to unload granular bulk cargo such as sand (cargo density 1.3~1.5t/m³); When loading, it is loaded according to the loading order of the loading calculation book. Each cabin needs to be trimmed. Flatten the bulkheads around the cargo hold. It is strictly forbidden to stack the cargo beyond the hatch coaming. If it has a serious impact on the stability, then pressurize the bag and baffle measures; the ship is not allowed to have partial loading conditions when loading the cargo; The ship is equipped with a sand suction pump.

The ship is equipped with self-priming system and belt conveyor self-unloading system and the cargo holds water drainage system. The belt conveyor self-unloading system consists of a sand chamber, a hopper, a belt conveying chamber. It is composed of belt conveyor, diesel engine, electric motor, gear box, reducer, etc. Cargo holds water drainage system, it is composed of a water well, a water suction pump, an alarm, etc., which can drain the water in the sand tank in time.

Before loading sand and gravel, the ship should check whether the self-priming equipment and cargo hold drainage system meet the requirements for use. Strictly follow the loading sequence in the loading calculation book during the sand suction operation, and the unloading order during the sand unloading operation. The order is opposite to the order of sand suction operation. When the sand suction tube is stuck on the seabed, it should be stopped in time and use a cutter or other equipment to cut and discard the sand suction tube.

Built: 2022

LOA: 170.46m

Beam: 26m

Depth: 10m

Draft: 7.05m

Rib Distance: 0.60/0.65m

Max Dredging Depth: 75m

GT: 12501

NT: 7000

Height from main deck to poop deck: 2.80m

Height from poop deck to crew deck: 2.50m

Height from crew deck to captain's deck: 2.50m

Captain's deck to driving deck height: 2.50m

Height from driving deck to compass deck: 2.50m

Beam Arch: 0.35m

Suction Main Engine Maker: Finland Wartsila

Power: 9500hp

Self-sail Main Engine Maker: Guangchai

Power: 3300hp + 3300hp

Conveyor: Hyundai 3000hp

Belt Width: 2.5m

Design Capacity: 18000-ton, max could be 25000 ton by overload

Accommodation: 24p

Minimum Safety Manning: 14p

The diameter of the pump is 1.2m, and the flow is 10,000cbm per hour suction ability: 18000 ton need 1.5 hour

Discharge Ability: 18000t/per hour

Execution Specification

Maritime Safety Administration of the People's Republic of China 2020 The "Technical Regulations for the Statutory Inspection of Domestic Navigational Sea-going Vessels" promulgated in 1999; Maritime Safety Administration of the People's Republic of China 2011 "Interim Regulations on the Survey of Self-unloading Sand Carriers at Sea" promulgated in 1988; China Classification Society 2018 The "Code for the Construction of Domestic Navigational Sea-going Vessels" promulgated in 1999 and 2019,2020 Revised notice in the year; China Classification Society 2018 The "Materials and Welding Specifications" promulgated in the year and 2019,2020 Revised notice in the year;

Layout

Under the ship's main deck

a.Stern~Fr5 Set tail pressure water tank (left and right);

b.Fr5~Fr11 Set up stern tube cooling water tank (left and right), hot oil discharge/storage tank (middle), left and right empty tank (6870 platform), domestic sewage tank (middle);

c. Fr11~Fr31 For the cabin:Fr25~Fr31 There is a centralized control room in the middle of the cabin platform, FR26~Fr31. The engine room platform is equipped with diesel daily cabins (left and right),FR27~Fr31 Set up a lubricating oil tank (right);

d. Fr31~Fr195: Pressure-carrying water tanks (left and right) are set under the two-side platform;

e. Fr31~Fr195 Is the cargo hold: the middle distance of the cargo hold 4200mm Under the sloping floor is a water tank; cargo hold oblique bottom distance to middle 4200mm~10500mm There are empty cabins on the double bottom of the inner longitudinal wall, and the double bottoms are empty cabins; side tanks There is an empty cabin on the platform, and a pressure cabin under the platform;Fr160~Fr175 Cargo hold sloping bottom distance center 4200mm~

10500mm On the double bottom of the inner longitudinal wall is a belt conveying equipment compartment.

f. Fr195~Fr203 There is an empty cabin on the platform, the port side is the lower cabin channel of the belt conveyor; the port side of the platform is Empty cabin, the starboard side is the emergency fire pump room;

g.Fr203~ Bow: The bow cabin (also a regulating water tank) is under the platform, and there is an empty cabin on the platform.

Main A: Stern~Fr5 Set fresh water tank (left and right), steering gear cabin (middle);

Main Deckhouse: FR5~FR31 Port side: electrician room, laundry room, ship office, charging and discharging board room, battery room, lower engine room stairway; in the middle: storage room, engine room shed, internal stairway; starboard: CO2 Room, bathroom, machine repair room, ship office, lower engine room stairway; 4 crew room

Poop Deck

Kitchen, dining room, dry food warehouse, toilet, engine room shed, emergency generator room, equipment Use room, storage room,4 Crew room

Crew Deck

Main wheel room, chief mate room,2 Senior crew bedrooms,3 Crew room,1 In between Use time,1 Bathroom,1 Room storage room, engine room shed;

Captain's Deck

Chief Engineer's Room, Internal Stairway, Toilet, Engine Room Shed, Storage Room,2 Spare time Room, captain room,2 Senior crew's bedrooms;

Driving Deck

Driving control room, internal stairway, duty room, toilet, clear water tank at the rear of the driving room (Port side), sea water tank (starboard side). See "General Layout Plan" for details

Structure

The structure of this ship is in accordance with China Classification Society 2018 Annual edition of "Code for Construction of Domestic Navigational Sea-going Vessels" and 2019, 2020 The design of the requirements for coastal navigation areas in the notification was revised in 2016. The use of hull materials for the whole ship owner CCS Approved materials. (Refer to relevant hull structure drawings for details)

Power Configuration

Host: 8320ZCd-6 2 tower

Rated Power: 2060kW

Rotating Speed: 525r/min

Gearbox: GWC52.62

Speed Ratio: i=3.5:1

Freeboard

According to the "Technical Regulations for Statutory Inspection of Domestic Navigational Seagoing Vessels" B Type ship requirements calculation: summer minimum freeboard 2930mm, Actual take 2974mm, Meet the specification requirements. Summer fresh water freeboard is 2798 mm; Tropical freeboard is 2827mm; Tropical fresh water freeboard is 2651mm. The bow height of the smallest boat is calculated as 4612.26mm, actual take 5285.00mm, meet the specification requirements.

Stability

Stability satisfies the Maritime Safety Administration of the People's Republic of China 2020 The Statutory Inspection Techniques for Domestic Navigational Sea-going Vessels issued in Technical Regulations on the requirements of coastal navigation areas.

Outfitting

Anchor Equipment

Own ship press 2018 "Code for Construction of Domestic Navigational Sea-going Vessels" and 2019, 2020 Announcement of the second revision of the year First 3 Chapter 2 Section related requirements are calculated and configured. N=1705.4, Choose $\phi 56$ Windlass 2 Taiwan with 5250Kg Hall anchor 2 only(GB/T 546-1997); CCS3- $\phi 56$ Stable welding chain twenty one Section (total length 577.5m).

Mooring Equipment

The ship's mooring configuration: $\phi 56$ mm Eight-strand polypropylene rope 5 root, 190 m/root; The ship's towing line configuration: steel wire rope 6 \times 37-48-1670 (breaking strength 1267KN) 1 root, 220 m/root; Own ship bollard configuration: A560 4 Only for towing cable, A355-10 for cable use only.

Rudder Equipment

The ship is equipped with two streamlined balanced rudders (NACA Type), rudder blade area: $A = 12.41 \text{ m}^2$ (single), Balance factor 0.222, Rudder area ratio 0.026. Servo selection 320KN.m Fork type hydraulic steering gear, the rudder pushing cylinder is plunger double rudder type, and the rudder rod is divided into upper the rudder stock and the lower rudder stock are two parts, the upper rudder stock is provided with a rolling upper and sliding rudder bearing, and the lower rudder stock and the rudder blade are welded It is connected as a whole, the upper part is connected with the upper rudder stock by a flange, and the lower part is provided with a rudder support device.

Railing and Stairway

All inclined ladders outside the cabin are made of marine steel inclined ladders (GB4444-1984), the ladder width is 700mm, Slope 50°. The width of the passage ladder in the cabin is 700mm, Slope 50°. Ladder width for vertical ladder in hull cabin 400 Steel Straight Ladder (GB/T3892-1983). Railings and high handrails are provided on the periphery of the deckhouse 1000mm.

Small Hatch

A hatch cover is provided on the left and right sides of the first deck as an entrance to the empty cabin, and an escape hatch is provided on the main deck. cover 2 Piece. Escape hatch cover 1 Piece. Ballast water tanks, empty tanks, fuel oil tanks, etc. are set appropriately according to the location. Suitable buried manhole cover or ordinary marine manhole cover.

Doors and Windows

The door on the outer wall of the ship's deckhouse adopts marine weathertight single-leaf steel doors.

The door of the crew accommodation use fire doors that meet the requirements of the regulations, and use sliding doors for the cab.

The door of the central control room in the engine room is made of steel for sound insulation and gas resistance door.

Fire doors are equipped according to the fire rating of the bulkhead.

The windows on the outer wall of the ship are steel welded ordinary rectangular windows and marine portholes.

The front wall of the cab adopts.

The cab is fixed with a rectangular window.

A chimney can be closed with blinds on the chimney.

Onboard supplies and Spare parts

All supplies, tools, spare parts, and artistic decorations shall be provided by the shipyard in accordance with the "Detailed list", "tool inventory", "spare inventory" and "art decoration inventory" are supplied. Except for special instructions, all tools and spare parts are in accordance with the manufacturer's and CCS Standard supply.

Life-saving Equipment

Life jacket (with life jacket light): 27pcs

Lifebuoy with self-lighting light: 10 only

Self-lighting lifebuoy with smoke signal: 2 only

Boarding ladder: 2 set

15 Popular inflatable life raft: 2 only (Self-righting type or both sides with canopy can be used as life-saving raft) with retractable device

Life jacket: 23 pcs

Lifebuoy with lifeline: 2 only

Life-saving rope thrower: 4 tool

Rocket parachute signal: 12 pcs

6 People life raft: 1 only

Fire Equipment

The ship is equipped with a water fire extinguishing system and CO2 Fire extinguishing system.

Two fire pumps are installed in the engine room.

An emergency fire pump is provided in the emergency fire pump room.

Firefighting equipment configuration

Portable foam fire extinguisher: 3 set

Fire Hydrant: 26 only

5 Kilogram CO2 fire extinguisher: 4 only

6 Kilogram dry powder fire extinguisher: 7 only

45L Hand push foam fire extinguisher: 3 pcs

Fire hose and box: 26 sets

9L Foam fire extinguisher: 18 only

Firefighter Outfit: 1 Set (according to regulations fan with complete equipment)

EEBD: 7 only

Signal Equipment

Two, CXH4-1 A white stern lamp, CXH5-1 Two white ring lights, CXH5-1 Five surrounding lights (Three reds, one green and one white), CXH5-1 Three flashes (one red, one white and one green).

Cabin Equipment

Crew Cabin

Equipped with: single bed 1 Zhang, single door wardrobe 1 only, bookshelf 1 only with drawer desk 1 Zhang, office chair 1 Zhang, plus appropriate mirrors, coat hooks, trash cans, etc.

Driver's Cab

The driver's cab is equipped with a chart table, a driver's platform and a chair.

Dining Room

With dining table 2 Zhang, chair 16 Handle, and equipped with dining cabinets, TV sets, trash cans, etc. on demand.

Toilet

Equipped with squat toilet, urinal, washbasin, anti-wave handrails, etc.

Woodwork, Insulation

Ceilings and enclosures of cabs, living cabins, conference rooms, corridors, and public spaces 30mm rock wool board, the interior of the cabin adjacent to the open air 50mm Rock wool serves as insulation.

Rock wool board and rock wool products are for ship inspection Approved products.

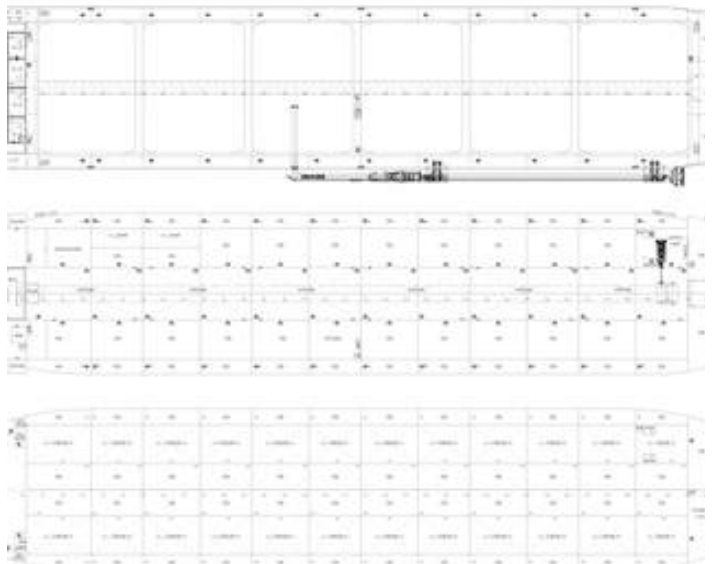
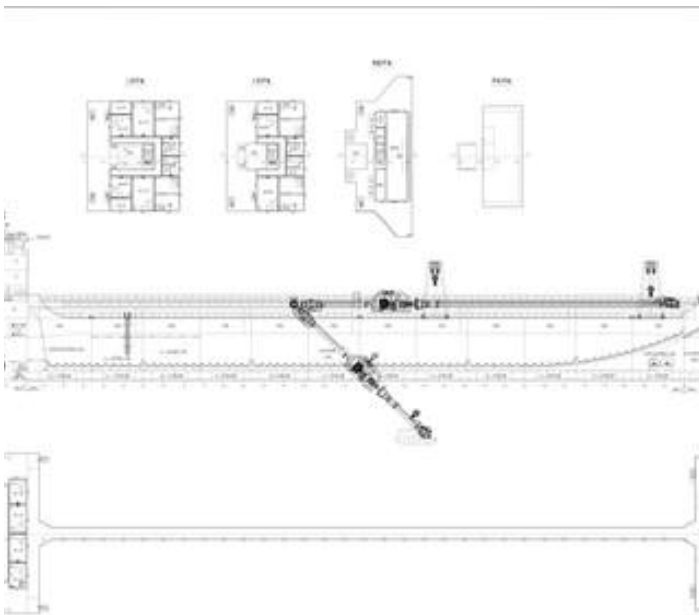
Floor laying of all crew cabins, dining rooms (floor tiles), wheelhouses (wood floors), meeting rooms, and walkways

Paste on deck dressing 2mmPVC floor.

The floors of kitchens, toilets and bathrooms are covered with cement and non-slip floor tiles. Tile tiles are placed around the wall.

All wood and textiles should meet the fire protection requirements of the classification society, and the open area should be treated with moisture.





The details of all vessels are offered in good faith but we cannot guarantee or warrant the accuracy of this information nor warrant the condition of the vessel. Any buyer should instruct their agents, or their surveyors, to investigate such details as the buyer desires validated. This vessel is offered subject to sale, price change, location or withdrawal without notice.



AUSTRALIA - BULGARIA - INDIA - INDONESIA - ITALY - MALAYSIA - NEW ZEALAND - PANAMA - PHILIPPINES - SINGAPORE - SPAIN - UK - USA - VENEZUELA - VIETNAM