



SEABOATS

MARINE BROKERS WITH A GLOBAL APPROACH

AUSTRALIA - BULGARIA - INDIA - INDONESIA - ITALY - MALAYSIA - NEW ZEALAND - PANAMA - PHILIPPINES - SINGAPORE - SPAIN - UK - USA - VENEZUELA - VIETNAM

sales@seaboats.net - www.seaboats.net

3800t Crane Barge Cheap Sale



Listing ID - 4527

Description 3800t Crane Barge Cheap Sale

Date 2011

Launched

Length 148.40m (486ft 10in)

Beam 45.30m (148ft 7in)

Draft 8.50m (27ft 10in)

Note 43792.66t

Location China

Broker Franklin Taylor

franklin.taylor@seaboatsbrokers.com

+64 27 276 5383

Price USD \$61 million

Built: Feb 22, 2011

Classification: CCS

LOA: 148.40m

LWL: 148m

Beam: 45.30m

Depth: 12m

Operation Draft: 8.50m

Scanting Draft: 9.50m

Full-load displacement : 43792.66t

Light displacement : 28152.42t

GT: 27,239t

NT: 8,171t

Accommodation

14x 1 man cabins: 14 men
8 x 2 men cabins: 16 men
19 x 4 - men cabins: 76 men
43 x 6 men cabins: 258 men
1 x 8 men cabins: 8 men
Total: 372 men
Hospital: 45m²

Safety Equipment

Life Boat PS: 1 x 128 persons
Life Rafts: 48 persons

Machineries

Main Generator: 3*900kW/400v
Work generator sets: 3 x 1000kW
Aux. generator sets: 2 x 400kW
Emergency gen set: 1*400kW/400v

Cargo Deck

Clear main deck: 35,000m²
Loading deck measurements: 1200m²
Deck load capacity: 4000t
Deck strength: 20t/m²

8 Point Mooring Winch

Mooring winches: 8*800kN
Rope diameter: 120mm
Storage capacity: 400m
Rated speed: 15m/min

1 Point Windlass

Windlass: 1*800kN
Anchor chain: 80mm (AM2)
Storage capacity: 385m
Rated speed: 9m/min

Anchors

Type SPEK: 11500kg*1pc
Type DELTA: 14260kg*3pcs, 14270kg*5pcs

Deck Crane

Working load: 40t
Max. working radius: 32.8m
Hoisting speed: 8m/min

Lifting Equipment

Heavy marine crane: Max testing lifting is 3500t/3800t, 2800t (360°full revolving type)
Deck Crane: 1*45 ton
Max lifting capacity: 45 ton (have passed test)

Main Hook: 45 ton

Aux. Hook: 10 ton

Summary

3500T crane barge + 372men accommodation

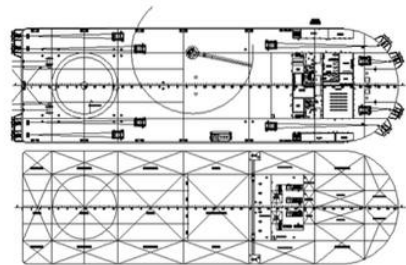
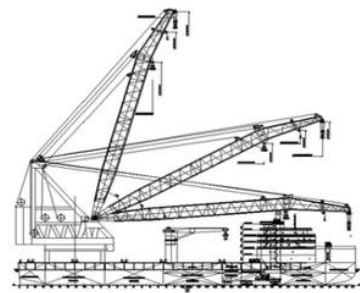
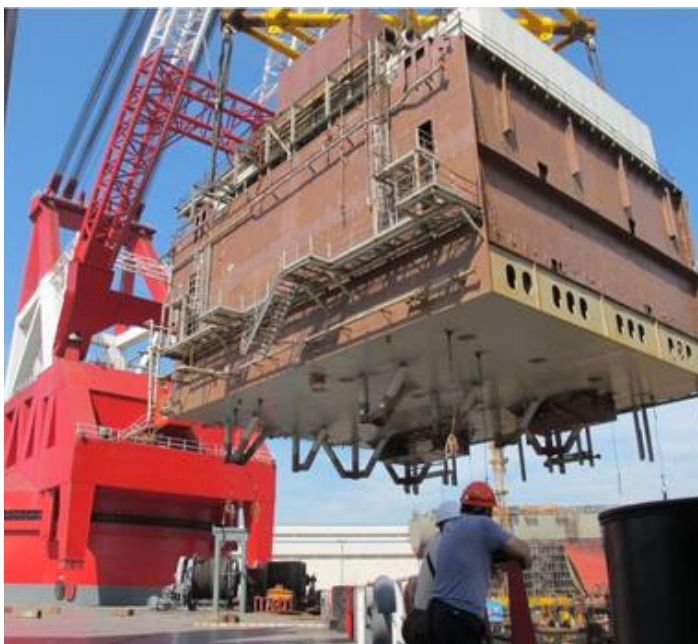
Fixed lifting capacity: 3500T

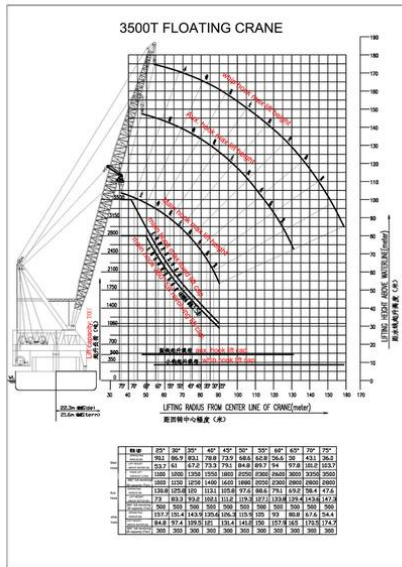
Revolving lifting capacity: 2800T

When crane is in fixed lifting status, boom angle in 75°

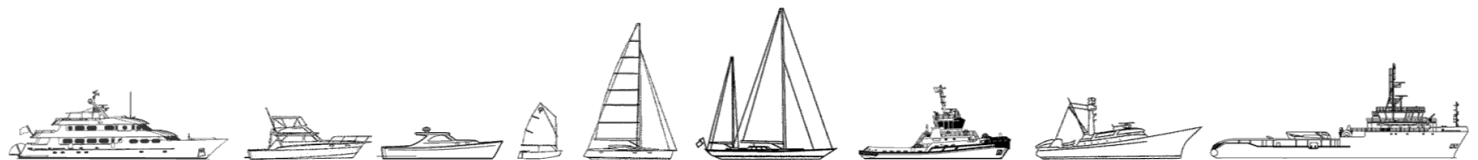
Main hook boom frame latitude at 37m, testing lifting capacity is 3850 ton.

Aux. hook boom frame latitude at 84m, testing lifting capacity is 726 ton.





The details of all vessels are offered in good faith but we cannot guarantee or warrant the accuracy of this information nor warrant the condition of the vessel. Any buyer should instruct their agents, or their surveyors, to investigate such details as the buyer desires validated. This vessel is offered subject to sale, price change, location or withdrawal without notice.



AUSTRALIA - BULGARIA - INDIA - INDONESIA - ITALY - MALAYSIA - NEW ZEALAND - PANAMA - PHILIPPINES - SINGAPORE - SPAIN - UK - USA - VENEZUELA - VIETNAM