



SEABOATS

MARINE BROKERS WITH A GLOBAL APPROACH

AUSTRALIA - BULGARIA - INDIA - INDONESIA - ITALY - MALAYSIA - NEW ZEALAND - PANAMA - PHILIPPINES - SINGAPORE - SPAIN - UK - USA - VENEZUELA - VIETNAM

sales@seaboats.net - www.seaboats.net

76m Research Vessel



Listing ID - 4573

Description 76m Research Vessel

Date Launched 1972, Rebuilt in 1994 and 2020

Length 76.6m (251ft)

Beam 12.6m (41ft 4in)

Draft 6.7m (21ft 11in)

Location Denmark

Broker Giuseppe Filippone
giuseppe.filippone@seaboatsbrokers.com
+39 329 886 8343

Price POA

Price Notes Low price for quick sale.

Dynamic Positioning Class II ROV Support DP2, AB+100 A1(ice class) originally built as a factory trawler, but with substantial rebuild in 1994, providing significant resources and facilities for the support of modern marine science. Or she can be converted for work in the offshore industry.

The ship is fully equipped to maintain and support extended deep-sea voyages. Handling equipment is installed for the operation of ROVs, deep and shallow water Search System, and the deployment of sub sea packages.

On the ship in 2021, there were over hull of all engines and generators (9 in total), replacement of metal on the deck and other repairs. The ship is in perfect condition and ready to go straight away. At the moment, all certificates have expired and the vessel is laid up with a team of mechanics and is maintained in good condition. Optionally, it is possible to leave one or two ROVs on the ship.

The Ship Is Old But In Very Good Condition With Good Strong Hull.

Main Features :

Classification: I.N.S.B. Nordic Ab+100 A1

Flag: Panama

Length Overall: 76.6m

Breadth: 12.65m

Draft: 6.7m

Speed Max: 12 Knots

Service: 10 Knots

Range: 16000 Nm

Duration: 60 Days

GT: 1431

NT: 504

Accommodation: 42 Persons

Crew: 12/15

Builder: Clellands

"A" Frame At Stern

Moon Pool: 5.3m X 3.5m Complete With Hanger

Remote Excavator Up To 3000m With Hydraulic Winch

ROV Control Room

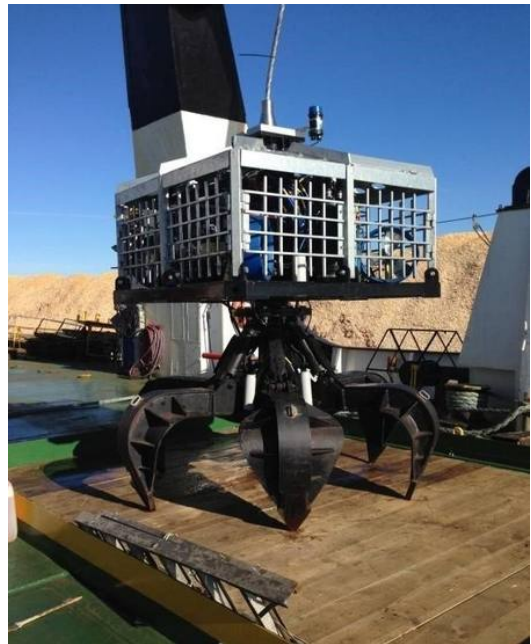
ROV Builder (Rb) Mini 300 Eprons

ROV, Røge (Rov) System 3000m Deep.

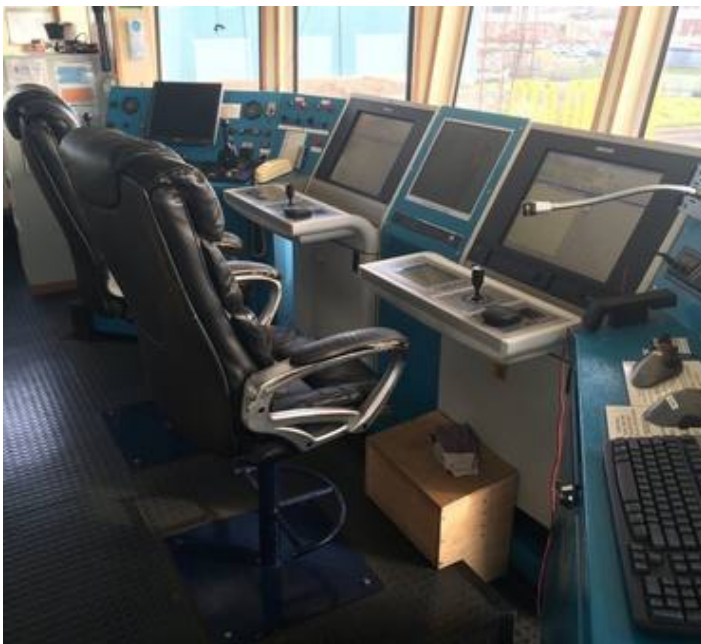
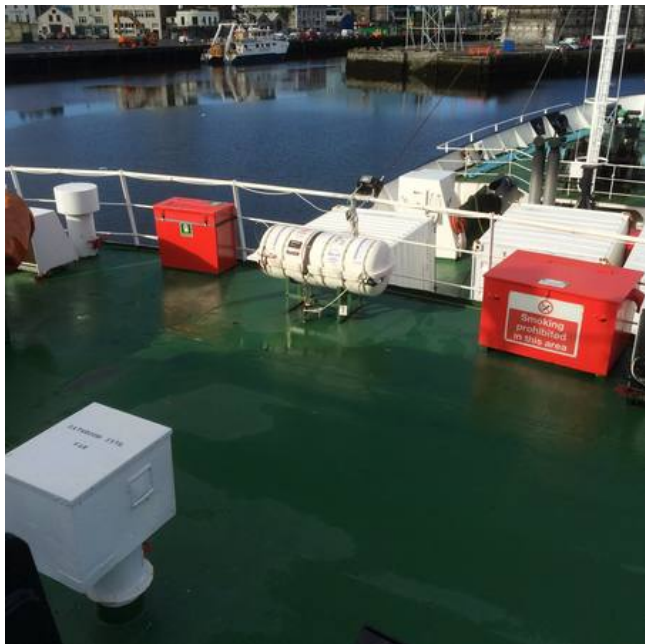
Cranes: 3 X 1.5- Ton Swl

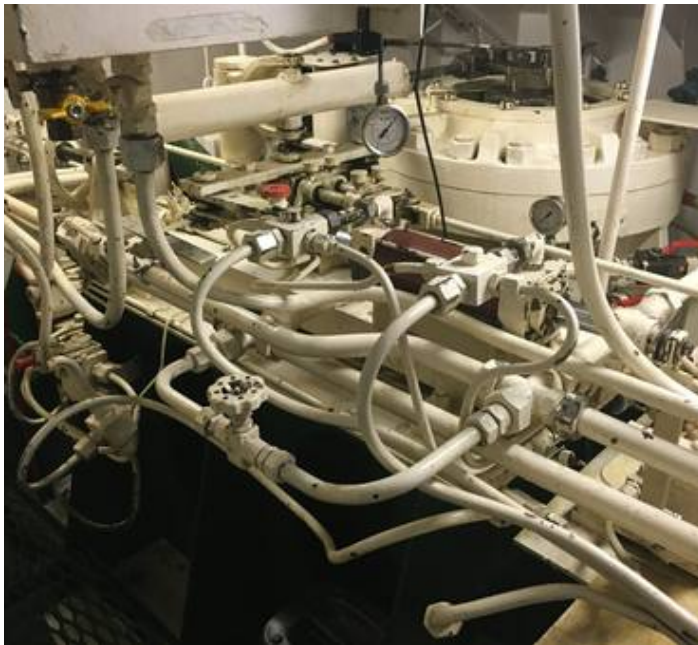
Knuckle Boom @ 6 Meters 1 X 9t Swl

Knuckle Boom. L/R For Rov 1 X 5-Ton Swl (Designed To 20- Ton Swl)



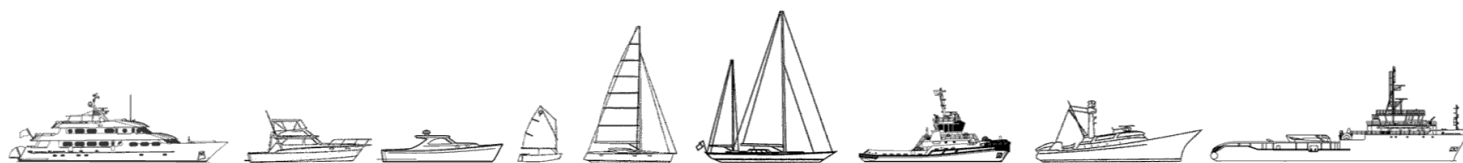








The details of all vessels are offered in good faith but we cannot guarantee or warrant the accuracy of this information nor warrant the condition of the vessel. Any buyer should instruct their agents, or their surveyors, to investigate such details as the buyer desires validated. This vessel is offered subject to sale, price change, location or withdrawal without notice.



AUSTRALIA - BULGARIA - INDIA - INDONESIA - ITALY - MALAYSIA - NEW ZEALAND - PANAMA - PHILIPPINES - SINGAPORE - SPAIN - UK - USA - VENEZUELA - VIETNAM