



SEA BOATS

MARINE BROKERS WITH A GLOBAL APPROACH

AUSTRALIA - BULGARIA - INDIA - INDONESIA - ITALY - MALAYSIA - NEW ZEALAND - PANAMA - PHILIPPINES - SINGAPORE - SPAIN - UK - USA - VENEZUELA - VIETNAM

sales@seaboats.net - www.seaboats.net

13.01m Workboat For Sale



Listing ID - 4584

Description 13.01m Workboat For Sale

Date 1977

Launched

Length 13.01m (42ft 8in)

Beam 4.95m (16ft 2in)

Draft 2.16m (7ft 1in)

Note 1 x Doosan Engine

Location UK Coast

Price GBP 55,000

Built: 1977, Faeroe Islands

Hull material: Steel

Flag: United Kingdom

Principle Dimension

LOA: 13.01m

Breadth: 4.95m

Depth: 2.16m

Draft: 2.16m

Machinery & Propulsion

Total power output: 282 bhp

Main Engine: 1 x Doosan LO86 TIH

Main Propulsion System: Single Screw

Additional Information

Hydraulics:

Palfinger pk1000 crane

2x Hydraulic David's

5 ton single barrel winch and Capitan

Hydraulic power steering

Electronics: 24v

The vessel arrived in Shetland in 1999, and was almost immediately laid up, for over-capacity in the operator's fleet. There are no notes on the history of the vessel whilst in Faroese ownership. It is purchased by current Owners in 2006, and immediately refurbished to vessel up to certification standard. It was in continuous use until early 2009, when the decision was taken to the vessel, and carry out a further refurbishment and wheelhouse renewal. It is flush decked, with a slight sheer, raised bulwarks forward and heavy bulwarks aft. The bow above the waterline is heavily raked, and even more so below the waterline in a ice-breaker format. The hull is single chine with a significant rise aft above the propeller, which is protected by line and an aft rudder post from the keel extension to the transom, which is heavily raked outwards.

The deck is pierced by the engine exhaust and the engine access hatch, and is surmounted by a deck crane. There is a massive underdeck storage area, which were originally the cabin and hold for the vessel. Presently these areas are not utilised as cargo spaces, but only as void spaces.

HULL

A comprehensive ultrasonic test of the hull was carried out whilst the vessel was ashore and confirms that the vessel is built to the scantlings below, and hat no significant wastage had taken place.

The hull is plated to the following scantlings

Keel and stern 12mm x 60mm

Frames 12mm x 50mm

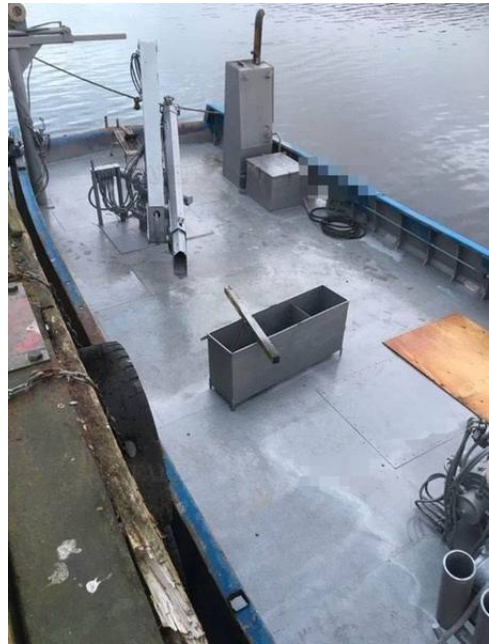
Frame spacing 500mm

Lower hull plating 8mm

Chine plating 7mm

Topside plating 6mm

Deck plating 5mm



The details of all vessels are offered in good faith but we cannot guarantee or warrant the accuracy of this information nor warrant the condition of the vessel. Any buyer should instruct their agents, or their surveyors, to investigate such details as the buyer desires validated. This vessel is offered subject to sale, price change, location or withdrawal without notice.



