



SEABOATS

MARINE BROKERS WITH A GLOBAL APPROACH

AUSTRALIA - BULGARIA - INDIA - INDONESIA - ITALY - MALAYSIA - NEW ZEALAND - PANAMA - PHILIPPINES - SINGAPORE - SPAIN - UK - USA - VENEZUELA - VIETNAM

sales@seaboats.net - www.seaboats.net

44m Steel Motor Yacht



Listing ID - 4637

Description 44m Steel Motor Yacht

Date 2010

Launched

Length 44.35m (145ft 6in)

Beam 7.04m (23ft 1in)

Draft 2.35m (7ft 8in)

Note Displacement: 280 tons

Location Valencia, Spain

Price POA

44m Steel Motor Yacht, built by Tersana Shipyards in Egypt, in 2010. Designed by Matt Hjortberg and Coriolis AB. Conceived to be a Commercial Yacht she is MCA certified (Unrestricted) and particularly suitable for Charter or Corporate use. Powered by twin 1056 HO MTU diesels she will cruise at a comfortable 10 to 11 knots. Separate owner's suite at Bridge Deck level gives excellent privacy when in use by the owner. Air- conditioner accommodation for 14 guests in one owners cabin, four double and two twin cabins and five crew plus a further double in the captains' cabin.

Year built: 2010

Registration: Cook Islands

Private/Commercial: Private

Classification: RINA C+ (Hull & Machinery)

MCA Coding: Unrestricted

Builder: Tersana Shipyard, Suez, Egypt

Construction: Hull steel hull and superstructure with teak decks

Exterior Designer: Coriolis AB

Interior Designer: Matt Hjortberg

LOA: 44.35m
LWL: 37.50m
Beam: 7.04m
Draft: 2.35m
GRT: 315
Displacement: 280 tons
Hull Material: Steel

Accommodation

Sleeps 14 in 7 cabins

Berths: 18

Heads: 9

Crew: Up to 7 in 5 cabins

Lady Scorpio's interior configuration has been designed to comfortably accommodate up to 14 guests overnight in 7 cabins.

Owners Suite on upper deck with en-suite bathroom and direct access to upper aft deck areas which can be closed off to make the area completely private.

2x Double VIP suites are located fully forward on the main deck level. There is a gymnasium and sauna on this level as well as a small office area.

Main Galley

- Galley equipped with
- Multi preparation machine
- Blender with mill
- Fridge
- Freezer
- Electric cordless steam iron
- Microwave oven
- METOS oven
- METOS stove
- Bistro griddle
- Coffee and tea making system

Dining area

The elegantly appointed dining area with table comfortably seating twelve guests.

Main salon

The spacious saloon features an open plan seating area. There are also various other seating areas and a bar to enjoy the evening cocktail on. Access to the spacious aft deck.

Lower deck

Four guest cabins, two twins and two doubles on the lower deck, also all with their own en-suite facilities.

Upper deck

On the upper most deck is a further sunbathing area, with jacuzzi.

Crew

There is separate crew accommodation forward with a messroom and sleeping accommodation for 5 crew. The captains' cabin, with double berth is also situated on the bridge deck forward of the owner's suite and with direct access to the bridge.

Capable of carrying up to 7 crew onboard in 5 cabins to ensure a relaxed and luxury yacht experience.

Machinery

Powered by 2 MTU (12 V 2000) diesel engines and propelled by her twin-screw propulsion the yacht is capable of a top speed of 11 knots, and comfortably cruises at 10 knots.

Main engines: Twin MTU V12 2000

Horse power / kW: 1056hp

Hours stbd: 674 at Feb 2018

Hours port: 651 at Feb 2018

Cruising speed: 10 knots

Maximum speed: 11 knots

Fuel Type: Diesel

Range at cruising: 3000nm

Extended Range: Nautical miles

Generators

Stbd: ONAN 80kW, 2000 hours at Feb 2018

Port: ONAN 80kW, 2000 hours at Feb 2018

Emergency: ONAN 30kW at Feb 2018

Stabilizers: Palad model 410 underway (zero speeds can be fitted)

Bow thruster: BUCKS 37kW with 2 hydraulic pumps

Water maker: 1300L per hour

Sewage treatment: Treatment plant

Fuel: 44000L, 11,623 US gallons

Water: 9200L, 2430 US gallons

Black water: 185L, 41 US gallons

Navigation Equipment

Raytheon standard radio STR 1500C INM-C

STR 2000 Raytheon

STR 8400 DSC Simrad Shipmate

Raytheon autopilot

GPS navigator

Gyro compass

Navtex receiver

Simrad CP31

2 x Simrad marine radar

Simrad AI80 display

Electrical Equipment

Shore power inlet

Generator

Electronics

Depth sounder

Log-Speedometer

Wind speed and direction

Computer
Repeater
TV set
VCR
Plotter
DVD player
CD player
GPS
Cockpit speakers
VHF

Inside Equipment

Sea keeper
Dish washer
Bow thruster
Washing machine
Electric bilge pump
Oven
Manual bilge pump
Microwave oven
Air compressor
Marine head
Air conditioning
Electric head
Heating
Chemical head
Hot water
Refrigerator
Fresh water maker
Deep freezer
Sea water pump
Battery charger

Outside Equipment / Extras

Teak cockpit
Cockpit shower
Teak side decks
Gangway
Davit
Hydraulic Gangway
Tender
Liferaft
Cockpit cushions
Cockpit table
Swimming ladder

Extra Inventory

Telescopic gangway
Panasonic washing machine
Electrolux washer

Air compressor

7 man Zodiac dinghy with 50HP outboard

SAFETY EQUIPMENT (To MCA LY2 Specifications)

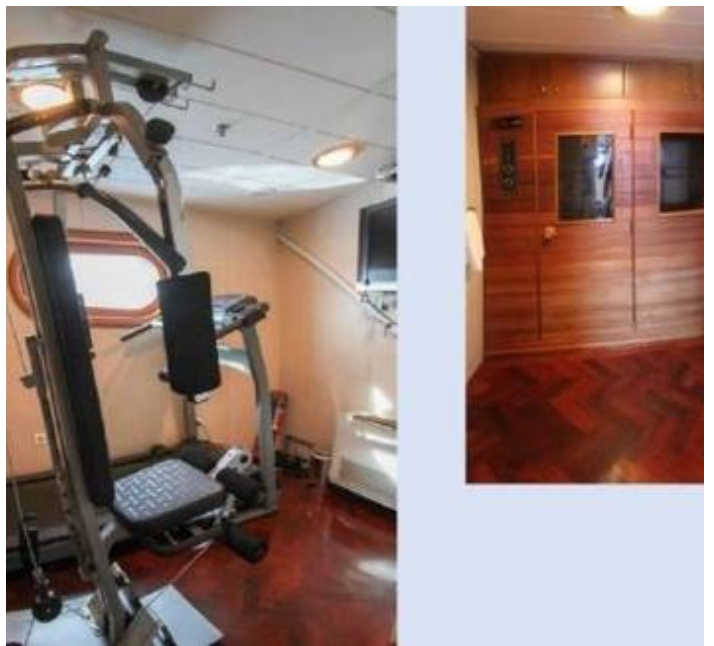
Sprinkler system

Smoke detectors

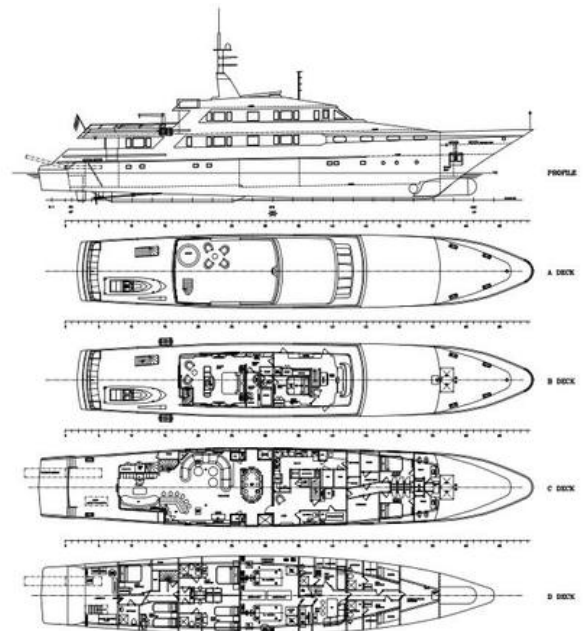
Ground Tackle: Twin anchors in hawse pipes



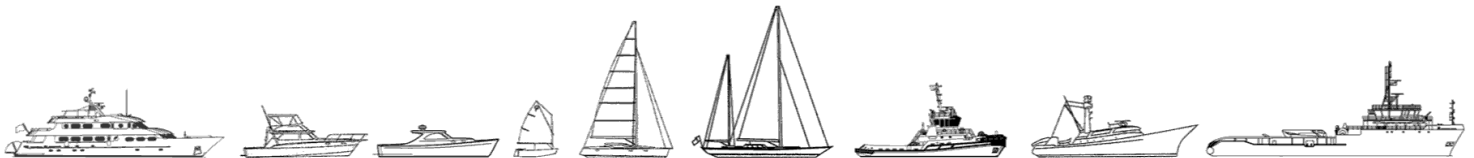








The details of all vessels are offered in good faith but we cannot guarantee or warrant the accuracy of this information nor warrant the condition of the vessel. Any buyer should instruct their agents, or their surveyors, to investigate such details as the buyer desires validated. This vessel is offered subject to sale, price change, location or withdrawal without notice.



AUSTRALIA - BULGARIA - INDIA - INDONESIA - ITALY - MALAYSIA - NEW ZEALAND - PANAMA - PHILIPPINES - SINGAPORE - SPAIN - UK - USA - VENEZUELA - VIETNAM