



# SEABOATS

MARINE BROKERS WITH A GLOBAL APPROACH

AUSTRALIA - BULGARIA - INDIA - INDONESIA - ITALY - MALAYSIA - NEW ZEALAND - PANAMA - PHILIPPINES - SINGAPORE - SPAIN - UK - USA - VENEZUELA - VIETNAM

[sales@seaboats.net](mailto:sales@seaboats.net) - [www.seaboats.net](http://www.seaboats.net)

## 38.5m Supply Support Vessel For Charter



### Listing ID - 4703

**Description** 38.5m Supply Support Vessel For Charter

**Date** 1984

**Launched**

**Length** 38.5m (126ft 3in)

**Beam** 8.66m (28ft 4in)

**Draft** 2.5m (8ft 2in)

**Note** 2 x Baudouin Engine

**Location** East Med

**Broker** Geoff Fraser  
[geoff.fraser@seaboats.net](mailto:geoff.fraser@seaboats.net)  
+64 21 61 222 5

**Price** POA

Built year / Place: 1984 / Brazil

Hull Material: Steel

Flag: Cyprus

Class Society and Notation: Polish Register Shipping, KM Supply Vessel (L3)

LOA: 38.5m

LBP: 34.7m

Breadth: 8.66m

Depth: 3.5m

Draft: 2.5m

NT: 92 tons

GT: 308 tons

DWT: 376 tons

### **Machinery & Propulsion**

Total power output (BHP): 1598

Main Engine: 2 x Baudouin

Main Propulsion System: Twin Screw

Auxiliary Engine: 2 x 350 kW, Boni marine

Propellers: 2

Maximum Speed: 11 knots

Cruising Speed: 9.5 knots

### **Cargo and Tanks Capacities**

Deck Cargo (tons) 100

Deck Area (m2) 129

Deck Load (tons/m2) 2.5

Fuel tanks capacity (m3) 90

Fresh Water tanks capacity (m3) 32

Ballast tanks capacity (m3) nil

Tanks certified for collection dangerous cargo and MARPOL collection 230

### **Additional Information**

The Vessel is certified as Recovery Oil / Marpol Vessel. Oil / Marpol recovery tank capacity 230m3

Last dry dock January 2022

RPM 1800

Bollard Pull: 13.5 tons

Bow Thruster 1.5 tons (300 hp) Electrical Generation

2 x 634 DSBIM.G 129KW

1 x Mareli MJD 125KW

### **Speed & Consumption**

Full operation 11 knots @ 3500 litres/24 hrs Eco cruising 9.5 knots @ 3000 litres/24 hrs

Deck Equipment: VCMR 2.65 tons @ 11m

Bridge

Fully Enclosed

Independent Fwd & Aft steering stations Radar

Echo Sounder

Plotter

GPS

SAT Phone

Auto Pilot

Search Light

Pa Intercom

System

Inmarsat C

CARGO AND TANKS CAPACITIES Deck Cargo (tons) 100

Deck Area (m2) 129

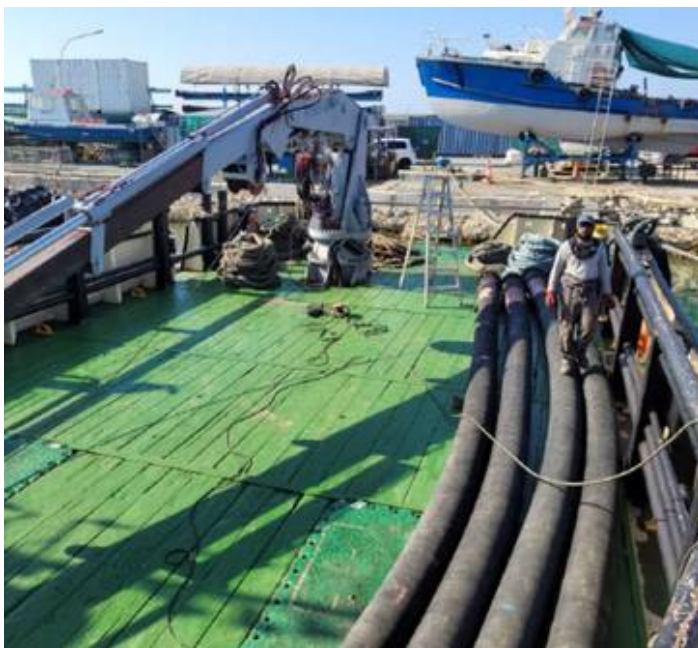
Deck Load (tons/m2) 2.5

Fuel tanks capacity (m3) 90

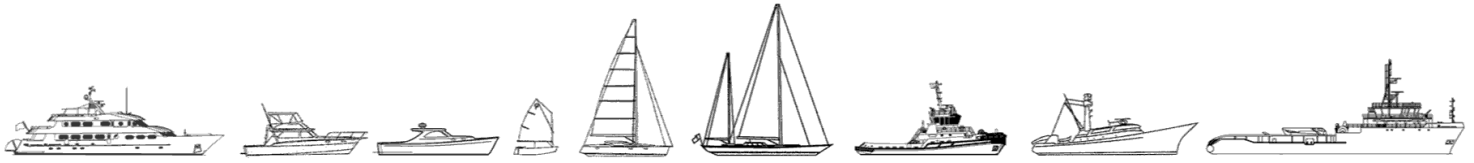
Fresh Water tanks capacity (m3) 32

Ballast tanks capacity (m3) nil

Tanks certified for collection dangerous cargo and MARPOL collection 230



The details of all vessels are offered in good faith but we cannot guarantee or warrant the accuracy of this information nor warrant the condition of the vessel. Any buyer should instruct their agents, or their surveyors, to investigate such details as the buyer desires validated. This vessel is offered subject to sale, price change, location or withdrawal without notice.



AUSTRALIA - BULGARIA - INDIA - INDONESIA - ITALY - MALAYSIA - NEW ZEALAND - PANAMA - PHILIPPINES - SINGAPORE - SPAIN - UK - USA - VENEZUELA - VIETNAM