



SEABOATS

MARINE BROKERS WITH A GLOBAL APPROACH

AUSTRALIA - BULGARIA - INDIA - INDONESIA - ITALY - MALAYSIA - NEW ZEALAND - PANAMA - PHILIPPINES - SINGAPORE - SPAIN - UK - USA - VENEZUELA - VIETNAM

sales@seaboats.net - www.seaboats.net

NEW BUILD - Solar Electric Catamaran



Listing ID - 4722

Description	Solar-Electric Catamaran Motoryacht
Date Launched	Built to Order
Length	13m (42ft 7in)
Beam	7.06m (23ft 1in)
Draft	0.73m (2ft 4in)
Note	2 x 50kW Electric Motors
Location	Europe
Broker	Giuseppe Filippone giuseppe.filippone@seaboatsbrokers.com +39 329 886 8343
Price	POA

Designed by the renowned designer Rick Welin (Canada) this catamaran is perfect as a live-aboard or charter motor-yacht. With huge interior spaces and very low running costs she is possibly the world's greenest boat design.

Main Characteristic

Length: 13m

Beam: 7.06m

Draft: 0.73m

Construction: Aluminum Alloy

Displ. Light Craft (No Fuel Water Dinghy): 28,164 lbs [12,775 kg]

Displ. Depart Port (Full load & tanks): 35,274 lbs [16,000 kg]

Air Draft – (Bimini Up): 18'-11" [5.77m]

Air Draft – (Bimini Down): 14'-0" [4.28m]

Air Gap: 2'-10" [.87m]

Molded depth at Transom: 4'-6" [1.38m]

Deadrise Midship: 11.7 deg.

Deadrise Transom: 5.7 deg.

Fuel: 475 gal [1800 Ltrs]

Water: 370 gal [1400 Ltrs]

Power: 2 x 50kW Electric Motors

Speed (Cruise): 6 Knots

CE Category: "B"

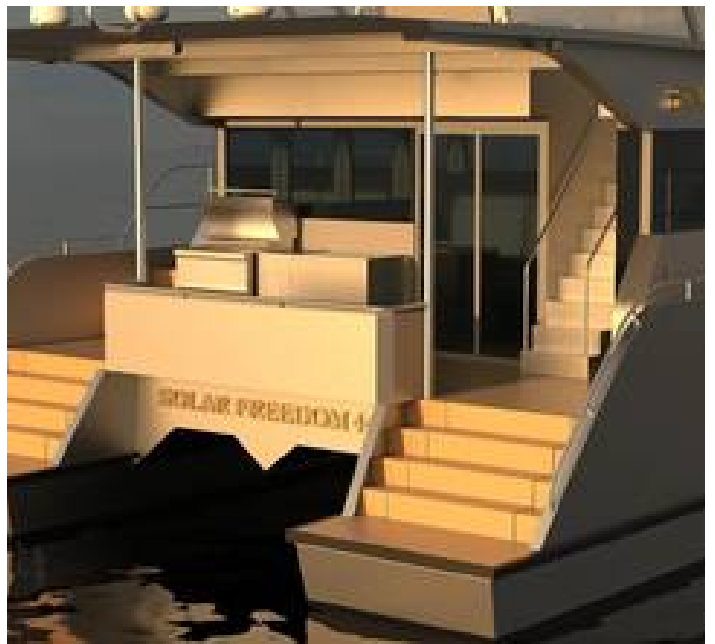
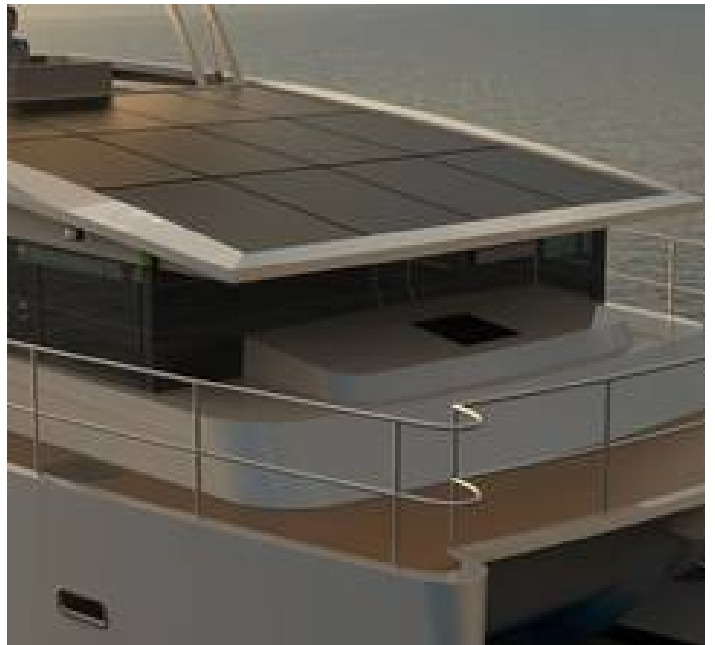
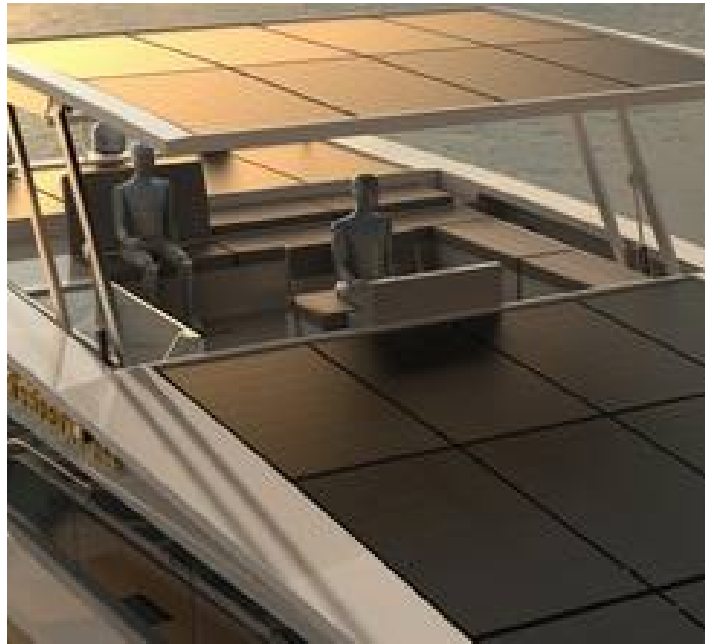
This catamaran motor-yacht has been designed from scratch specifically for electric power. Her long and slender hulls and a fine entry at the forefoot ensure minimal drag resistance and can be driven on a whisper. If you're looking for a greener lifestyle with minimal emissions and radically reduced diesel bills look no further.

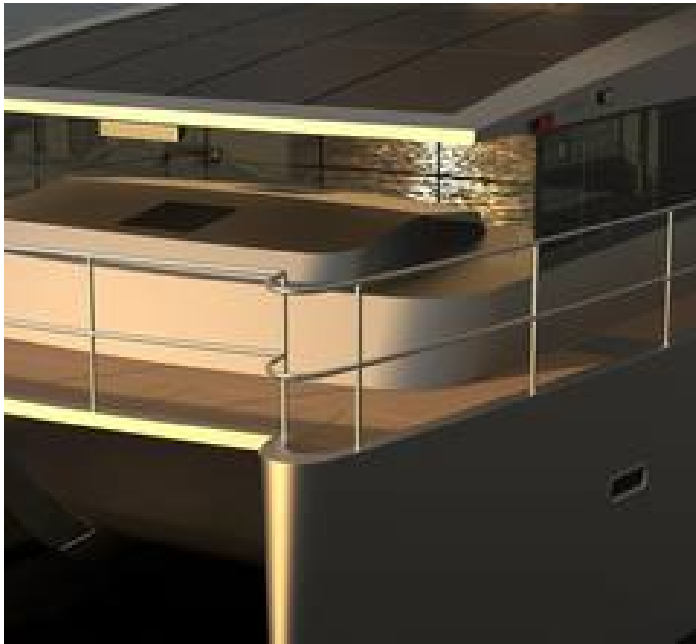
Powered by two 50 kW electric motors she will cruise at 6 knots on battery, and have an unlimited range at 4-5 knots directly off the solar panels. Battery power is provided by 100-150 kW LifePO4 battery bank(s) charged by the 8kW solar array which is backed up by a 50-100kW genset for cloudy days. With the auxiliary genset she can run continuously even on rainy days so there's never any down-time. Quick charging can also be achieved at the dock over the shore power cable.

Electric power means virtually no maintenance compared to a diesel-powered boat. Electric drive-trains have essentially only one moving part in the motor and those bearings are usually rated for a lifetime of service. The lifetime of savings in maintenance and fuel compared to a diesel drive are very real. No oil changes, no mechanics to hire, no mid-life rebuilds.

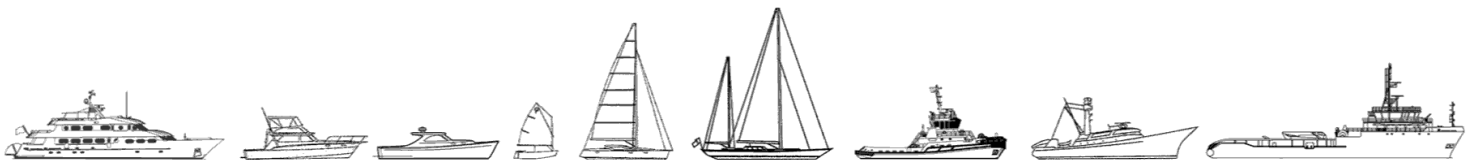
The catamaran is characterized by comfortable cabins, inviting salon and huge open areas. Each unit can be customized to Owner's requirements.







The details of all vessels are offered in good faith but we cannot guarantee or warrant the accuracy of this information nor warrant the condition of the vessel. Any buyer should instruct their agents, or their surveyors, to investigate such details as the buyer desires validated. This vessel is offered subject to sale, price change, location or withdrawal without notice.



AUSTRALIA - BULGARIA - INDIA - INDONESIA - ITALY - MALAYSIA - NEW ZEALAND - PANAMA - PHILIPPINES - SINGAPORE - SPAIN - UK - USA - VENEZUELA - VIETNAM