



SEABOATS

MARINE BROKERS WITH A GLOBAL APPROACH

AUSTRALIA - BULGARIA - INDIA - INDONESIA - ITALY - MALAYSIA - NEW ZEALAND - PANAMA - PHILIPPINES - SINGAPORE - SPAIN - UK - USA - VENEZUELA - VIETNAM

sales@seaboats.net - www.seaboats.net

60.58m Landing Craft For Charter



Listing ID - 4734

Description 60.58m Landing Craft For Charter

Date 1972

Launched

Length 60.58m (198ft 9in)

Beam 10.3m (33ft 9in)

Draft 2.1m (6ft 10in)

Location Nordic

Broker Richard Pierrepont
richard.pierrepont@seaboatsbrokers.com
+44 7798 607 323

Price POA

Built year / Place: 1972 / Norway

Hull Material: Steel

Flag: Norway

Class Society and Notation: Local Norwegian Class

Principle Dimension

LOA: 60.58m

LBP: 56.5m

Breadth: 10.3m

Draft: 2.1m

GT: 850 tons

Machinery & Propulsion

Total power output (BHP): 1004

Main Engine: 2 x
Main Propulsion System: Schottels
Propellers: 2
Maximum Speed: 10 knots
Cruising Speed: 8 knots

Additional Information

The ship went through a major rebuild in 1996. The rebuild included a major modernization of the vessel, including a new wheelhouse made of aluminum and the interior.

Bow gate, stern gate and deck hatches were replaced with new ones.

At the same time, all engines were renewed, and a double water jet was fitted to improve the control of the vessels.

- 2003, the vessel was sold to a private industry.
- 2016, The vessel went through a full certification, including thickness measurement and updated safety system and electrical system.
- 2017, the bridge was updated with Bridge Mate PKS and Operator Chair DGPS, Autopilot, 2xECDIS, Radar, Gyro and Sonar.
- 2019, major upgrade and gained European Certificates
- 2020, the dayroom was upgraded with new furniture and underfloor heating.
- 2021, 2 new engines from Scania were mounted and 2 new generators from John Deer. Engines are made for use with BIODIESEL. New alarm panel and New maneuvering system was also installed.

This ship is perfect for transporting machines and equipment. Weight, terrain, and low availability are our specialty. We can transport big and heavy components by sea. With its special design, the ship is very suitable for transport in shallow water.

Max drive height thorough drive deck ca 3.6 meter

Addition information for Landing Craft's class:

Length of transport deck: 54.5 meter

Width of deck: 6.2 meter

Max height under hatches: 3.6 meter

Max width of bow port: 4.0 meter

Max width of stem port: 4.3 meter

Max height of stem port: 3.5 meter

PROPULSION MACHINERY

- 2 SCANIA DI16-070M-625hk v/1800 rpm (2021 model)
- 2 propels type Schottel SRP 300 m rotational speed 453 rpm. Stb right-handed propel, bb lefthanded propel
- Clutch Electro Hydraulic type K305

BOW THRUSTERS

Made Schottel Werke

- 2 type Schottel Pumpejet SPJ 22
- Output 100 kW (134 Hp) v/2080 rpm

POWER SUPPLY

2 engines type

- John Deere 6068TFM50
- Output 89kw v/1500 rpm

1 engine type

- Type DEUTZ MWM TBD 234 V8
- Output 255 kW (342 Hp) v/1500 rpm

1 generators made Stamford

- Type MHC 434C
- Effect 200 KVA
- Voltage: 3 x 230V, Frequency 50Hz v/1500 rpm

2 generator made Stamford

- Effect 105 KVA / 84kw
- Voltage: 3 x 230V, Frequency 50Hz v/1500 rpm

FIRE DETECTING SYSTEM

Type Eltek ZLX 30

ROV

Type: Sirio inspection ROV

Operating depth: 300 m

Dimensions: 590x560x450 mm

Weight: 40 kg

Chassis: High Impact Resistant Maintenance Free Polyethylene

Cameras: n° 1 Color

Power requirements: 220-240 VAC, 380-410 VAC single phase 50/60 Hz 3 kW

Payload: 8 kg (up to 10 kg with optional buoyancy)

Tritech micron DST Sonar

Tritech Micronav 100 USBL

CRANE

Palfinger PK120000MH 120 T/M

Range 21.6 m (3.5 ton)

Range 26.6 m (2.2 ton)

DP SYSTEM

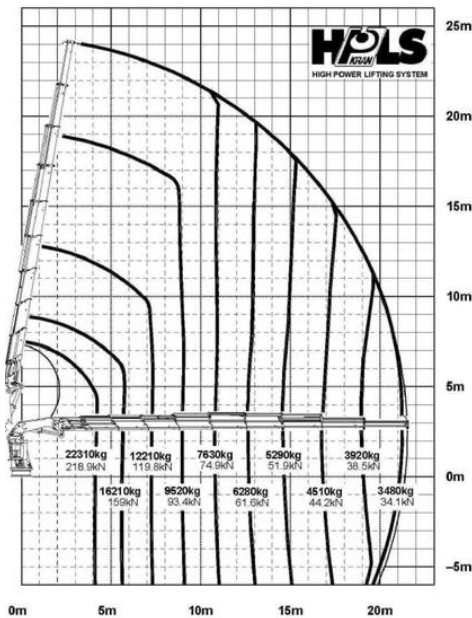
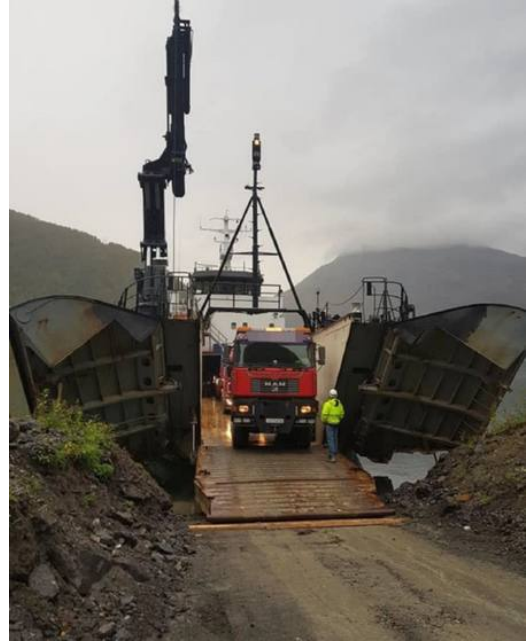
Type: MT Bridgemate DP0

Ref systems: 1 Diff GPS

Sensor: 1 acoustic wind sensor, 2 Gyros, 1 VRU

DP modes: DP, Joystick, Transit, DP Relaxed

Logging: 30 day logging of alarm/event and playback of DP screen.



The details of all vessels are offered in good faith but we cannot guarantee or warrant the accuracy of this information nor warrant the condition of the vessel. Any buyer should instruct their agents, or their surveyors, to investigate such details as the buyer desires validated. This vessel is offered subject to sale, price change, location or withdrawal without notice.

