



SEABOATS

MARINE BROKERS WITH A GLOBAL APPROACH

AUSTRALIA - BULGARIA - INDIA - INDONESIA - ITALY - MALAYSIA - NEW ZEALAND - PANAMA - PHILIPPINES - SINGAPORE - SPAIN - UK - USA - VENEZUELA - VIETNAM

sales@seaboats.net - www.seaboats.net

167m RoRo Car Passenger Ferry For Sale



Listing ID - 4783

Description 167m RoRo Car Passenger Ferry For Sale

Date 2002

Launched

Length 167m (547ft 10in)

Beam 25.6m (83ft 11in)

Draft 6m (19ft 8in)

Location South Korea

Broker Giuseppe Filippone
giuseppe.filippone@seaboatsbrokers.com
+39 329 886 8343

Price POA

Description: Car Pax Ferry

Type: RoRo Passenger Ferry

Built: October, 2002

Builder: Mitsubishi Heavy Industries, Japan

Class: KR

Date Launched: 2002

Length: 167m

Beam: 25.6m

Draft: 6m

Depth: 14.50m

Gross Tonnage: 9832 tons

Main Engine: NKK/NKK-SEMT Pielstic 18PC2-6V 13500p x2 (27000ps)

Aux. Engine: DAIHATSU 8DK-20 1454ps 900rpm x3

Generator: 60Hz 450v 1245kva 900rpm x3

Propeller: NAKASHIMA CPP 4blades

Side Thruster: NAKASHIMA TCT-200

Speed: 23.20 knots

Passenger: 930 persons

Crew: 32 persons

Car: Medium Sized (1.607tons weight) x 358, Motorcycle (0.238tons weight) x 37 or
8T Truck x 180 (thrust 16.0T), Passenger Car x 100

Receptacle For Reefer Containers: 220V X 60A X 40 pcs





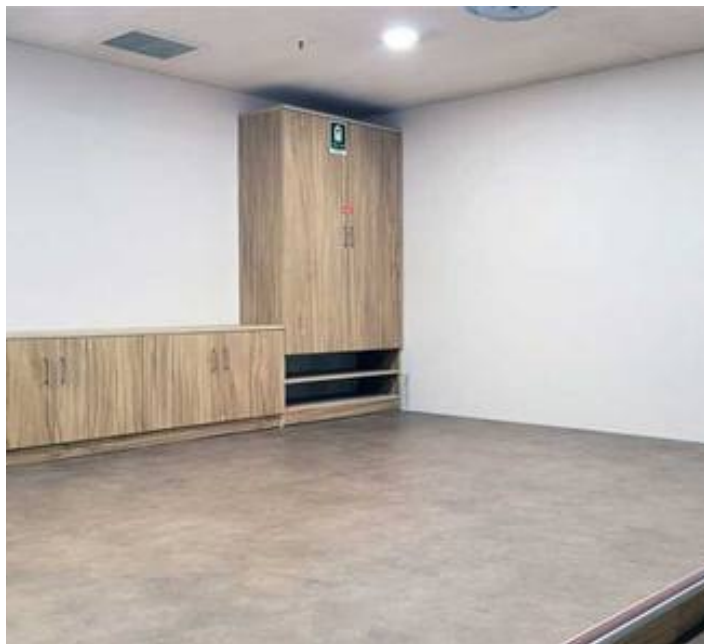








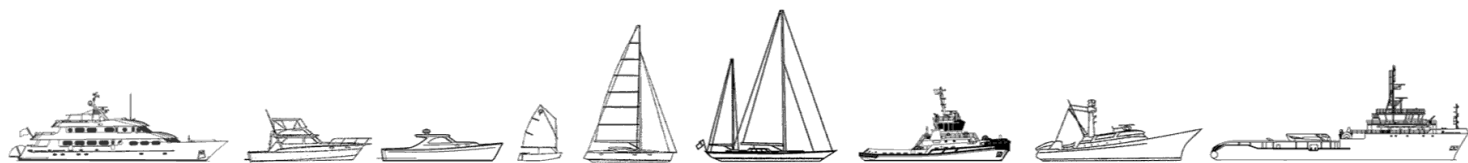








The details of all vessels are offered in good faith but we cannot guarantee or warrant the accuracy of this information nor warrant the condition of the vessel. Any buyer should instruct their agents, or their surveyors, to investigate such details as the buyer desires validated. This vessel is offered subject to sale, price change, location or withdrawal without notice.



AUSTRALIA - BULGARIA - INDIA - INDONESIA - ITALY - MALAYSIA - NEW ZEALAND - PANAMA - PHILIPPINES - SINGAPORE - SPAIN - UK - USA - VENEZUELA - VIETNAM