



SEABOATS

MARINE BROKERS WITH A GLOBAL APPROACH

AUSTRALIA - BULGARIA - INDIA - INDONESIA - ITALY - MALAYSIA - NEW ZEALAND - PANAMA - PHILIPPINES - SINGAPORE - SPAIN - UK - USA - VENEZUELA - VIETNAM

sales@seaboats.net - www.seaboats.net

3x Barges For Sale



Listing ID - 4784

Description 3 x Barges For Sale

Date 2009

Launched

Length 86.01m (282ft 2in)

Beam 21.36m (70ft)

Location Sri Lanka

Broker Richard Pierrepont
richard.pierrepont@seaboatsbrokers.com
+44 7798 607 323

Price USD 2.5 million

Price Notes Can be sold separately by negotiation

Date delivered: 2009

Builder: Taixing Hongtun Shipyard P.R, China

Flag: Sri Lanka

Port of Registry: Colombo

Trading area: Unrestricted Navigation

Trading area limits as documented on the vessel's certificate: No limits

Type of barge: Pontoon Barge

If barge is Non-powered or Other, it can be: Non-Powered

Type of cargoes vessel is certified to carry: Dry Bulk

Type of hull: Single hull

LOA: 86.01m

Beam: 21.36m

Moulded Depth: 5.20m

Maximum air draft in normal ballast: 3.65m

NRT: 730
GT: 2,434

Classification

Classification society: Bureau Veritas
Class notation: + Hull Pontoon Barge
Date of last special survey / date of next special survey: 29 Oct, 2023

Load line Information

Summer
Deadweight: 5000 metric tons
Displacement: 6,625 metric tons
Freeboard: 1.55m
Draft: 3.65m

Normal Ballast Condition
Deadweight: 1,625 metric tons
Displacement: 1,625 metric tons
Freeboard: 4.3m
Draft: 0.90m
Lightship: 1,625 mt

Certification

International Load line Certificate (ILC)
Certificate of Class (COC)
International Tonnage Certificate (ITC)

Tank Capacities

Maximum loading restrictions as per company policy (max): Center of gravity 2m above main deck
Maximum weight of cargo on deck: 5620 metric tons
Deck Loading density: 7mt/m³

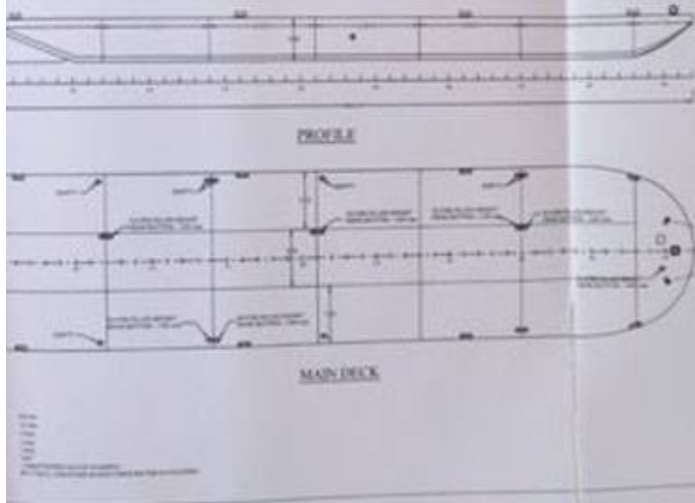
Mooring

Number / length / diameter of mooring wires (on drums): 4 Shackles of 28mm
Number / length / diameter of mooring wire tails: 4 Shackles of 28mm
Number length / diameter of mooring ropes: On drums
Number and brake holding power of winches: 2
Type of Mooring Winches: Single/split drum? Single Drum
If the vessel is equipped with mooring winches are the brakes set to render at 60% of mooring lines MBL? Yes

Engineering

Is vessel fitted with an emergency generator and or batteries: Fitted one engine for mooring winch
If fitted, number of engines: One
If fitted, engines rated at: kW 2000 R/min
Anchor handling winch: Yes
Anchor details: Stockless bow anchor 1020kg

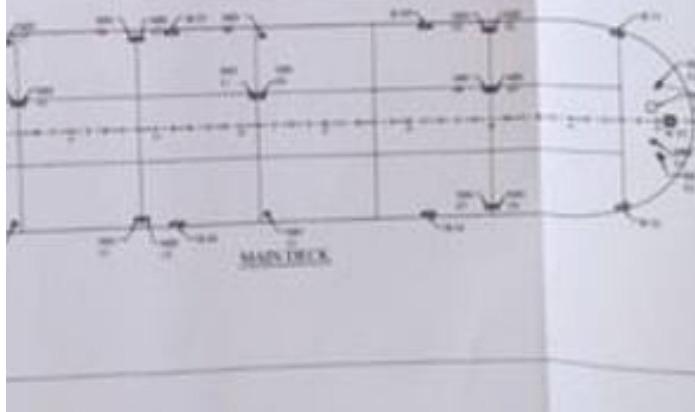
INDICATE WATER FILLED VOID SPACE OF CEB - PCPP B-3 BARGE



GENERAL ARRANGEMENT OF CARGO BARGE



GENERAL ARRANGEMENT OF CEB - PCPP B-2



GENERAL ARRANGEMENT OF CEB - PCPP B-1



ZINC ANODE ARRANGEMENT FOR CARGO BARGE

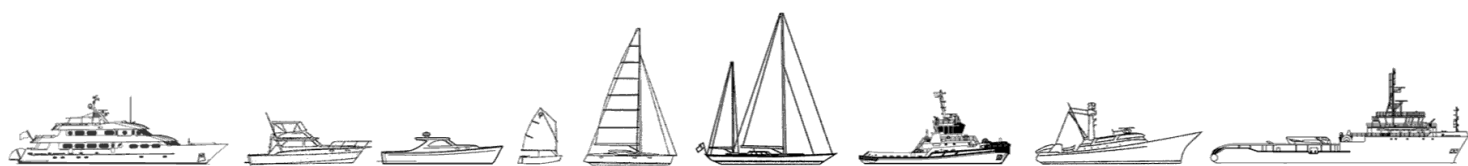


RESTRICTED

The basic particulars of the Barges are as follows:

- Identification No. - CEB-PCPPB-01, CEB-PCPPB-02 & CEB-PCPPB-03
- Age - Barges were built in year 2012 (10 years old)
- Size of the Barge
 - Length - 86.00 m
 - Width - 21.00 m
 - Height - 5.20 m
 - Scantling Draft - 3.00 m
 - Deck Loading - 70 mt
 - Hold Capacity - 3,900 mt
- Approximately total weight
 - CEB-PCPPB-01 - 1,021 mt
 - CEB-PCPPB-02 - 1,021 mt
 - CEB-PCPPB-03 - 1,021 mt (Side walls with square)

The details of all vessels are offered in good faith but we cannot guarantee or warrant the accuracy of this information nor warrant the condition of the vessel. Any buyer should instruct their agents, or their surveyors, to investigate such details as the buyer desires validated. This vessel is offered subject to sale, price change, location or withdrawal without notice.



AUSTRALIA - BULGARIA - INDIA - INDONESIA - ITALY - MALAYSIA - NEW ZEALAND - PANAMA - PHILIPPINES - SINGAPORE - SPAIN - UK - USA - VENEZUELA - VIETNAM