



# SEABOATS

MARINE BROKERS WITH A GLOBAL APPROACH

AUSTRALIA - BULGARIA - INDIA - INDONESIA - ITALY - MALAYSIA - NEW ZEALAND - PANAMA - PHILIPPINES - SINGAPORE - SPAIN - UK - USA - VENEZUELA - VIETNAM

[sales@seaboats.net](mailto:sales@seaboats.net) - [www.seaboats.net](http://www.seaboats.net)

## 30.48m Multicat For Charter



### Listing ID - 4795

**Description** 30.48m Multicat For Charter

**Length** 30.48m (100ft)

**Beam** 9.14m (29ft 11in)

**Draft** 1.39m (4ft 6in)

**Note** 2 x Ford Engine

**Location** UK Coast

**Price** POA

Hull material: Steel

Flag: United Kingdom

Class Society and Notation: MCA, VIII A

LOA: 30.48m

Breadth: 9.14m

Depth: 2.13m

Draft: 1.39m

DWT: 166 tons

### Machinery & Propulsion

Total power output (BHP): 300

Main Engine: 2 x Ford

Main Propulsion System: Twin Screw

Auxiliary engine(s): 1 x 45 kW, 1 x 65 kW

### Additional Information

Draft (Light) 1.00 m  
Spud Legs 3 x 15 m  
Moon Pool Ø 914 mm

Propulsion 360°rudder propeller pcX-Pro is an outstanding product for construction equipment guidance offering unsurpassed flexibility and performance. pcX- Pro is exclusively a 3D positioning product with capability to include multiple machine and tool types according to need. The system shares an operating system and functionality with its counterpart, Dig master Pro, so will be familiar to anyone used to using James Fisher Prolec's product but benefits from unique features which boost productivity and applicability more widely. There is virtually no limit to the configurations of this system and it can be further tailored to individual need if there is a bespoke application.

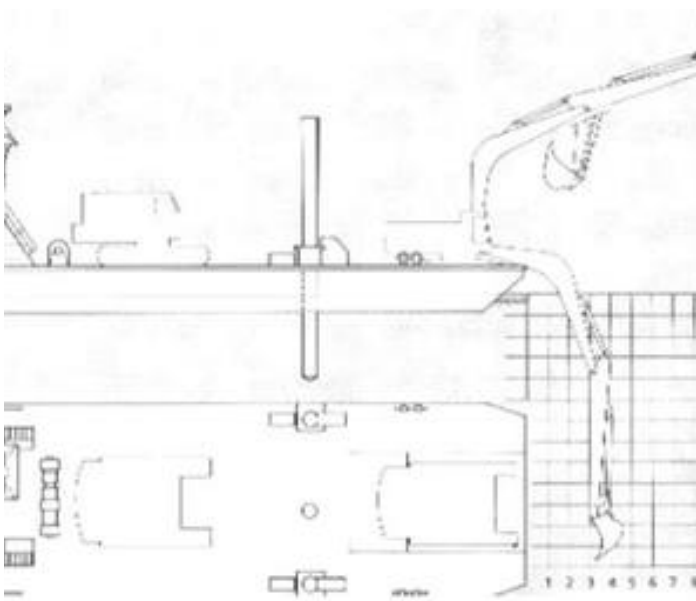
### **Benefits of RCI Pro**

- Ruggedized large display for ease of use and personalization
- Icon driven menu allows use in any language and without extensive training
- Industry benchmark for speed of operation and response
- Productivity gains in double digits through efficiency and removal of waste
- Multiple views and configurations tailored to suit your requirements
- Wide applicability including basic excavation, dredging, piling and revetment works

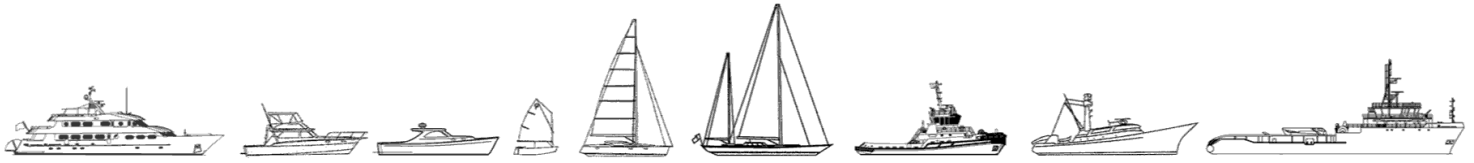
### **Standards features**

- Runs with and without GNSS input
  - Up to four views at once on screen
  - Familiar Windows™ operating system
  - Pan/zoom and rotate feature for improved visibility of work area
  - Fully removable touch screen computer
  - Display monitors bucket position precisely in real time
  - Progress maps in multiple colors (allows easy review of work progress) On grade target indicators Multiple tool point positions for precision grading
  - "Stake out" function provides guidance in rock armor placement
  - Terrain mapping – survey with tool
  - Built in job viewer with color shading
  - Unlimited bucket and special tool designs available
  - Configurable auto zoom and "rainbow" bucket features
  - Configurable dead band and cross hairs displayed when digging
  - Configurable data shown on display – distance to target, depth etc.
  - Configurable views allowing multiple views of one job
  - Configurable slew monitor status indicator
  - Configurable avoidance zones, chainage lines and POI (can be exported from works also)
  - Pro Job software allowing import and export of multiple file formats
  - Pro Job software allowing import and export of multiple file formats
  - Supports multiple languages options
  - Multiple sensor options fully compatible with the base hardware
  - Sensor variants for marine and long reach operation GPS compass for superior 2D heading display
  - Tilting bucket options
  - Almost universal acceptance of GNSS systems
  - Machine and tool configuration can be altered to suit specific applications and one-off requirements
- Standards and Tests and Specification Full testing, traceability and control on design to ensure the operation is as planned and the functionality as safe as possible.
- Display: 13.3" TFT touchscreen running Windows 7 professional 349 x 244 x 46mm (not including cradle)
  - Internal storage: 320GB (compatible with external storage devices)

- Interface: Serial DSUB 9pin and 3 x USB2.0 (1 dedicated to system input)
- Communications – CAN on sensors; Wireless/Bluetooth on display plus 4G mobile broadband connection
- Connectors – M12
- Input voltage 10 to 32VDC; Display voltage 15.6V DC



The details of all vessels are offered in good faith but we cannot guarantee or warrant the accuracy of this information nor warrant the condition of the vessel. Any buyer should instruct their agents, or their surveyors, to investigate such details as the buyer desires validated. This vessel is offered subject to sale, price change, location or withdrawal without notice.



AUSTRALIA - BULGARIA - INDIA - INDONESIA - ITALY - MALAYSIA - NEW ZEALAND - PANAMA - PHILIPPINES - SINGAPORE - SPAIN - UK - USA - VENEZUELA - VIETNAM