



SEABOATS

MARINE BROKERS WITH A GLOBAL APPROACH

AUSTRALIA - BULGARIA - INDIA - INDONESIA - ITALY - MALAYSIA - NEW ZEALAND - PANAMA - PHILIPPINES - SINGAPORE - SPAIN - UK - USA - VENEZUELA - VIETNAM

sales@seaboats.net - www.seaboats.net

140m RoRo



Listing ID - 4809

Description	140m RoRo
Date Launched	1996
Length	139.72m (458ft 4in)
Beam	21.50m (70ft 6in)
Draft	8.8m (28ft 10in)
Location	South Korea
Broker	Giuseppe Filippone giuseppe.filippone@seaboatsbrokers.com +39 329 886 8343
Price	POA

Description: RoRo Cargo

Date Launched: 1996

Builder: Yamanishi Corporation, Japan

Flag: Korea

Class: KR

Length: 139.72m

Beam: 21.50m

Draft: 8.8m

Gross Tonnage: 5310 tons

DWT: 5506 tons

Main Engine: NKK-SEMT-PIELSTICK 6PC40L 10800ps 375rpm x1

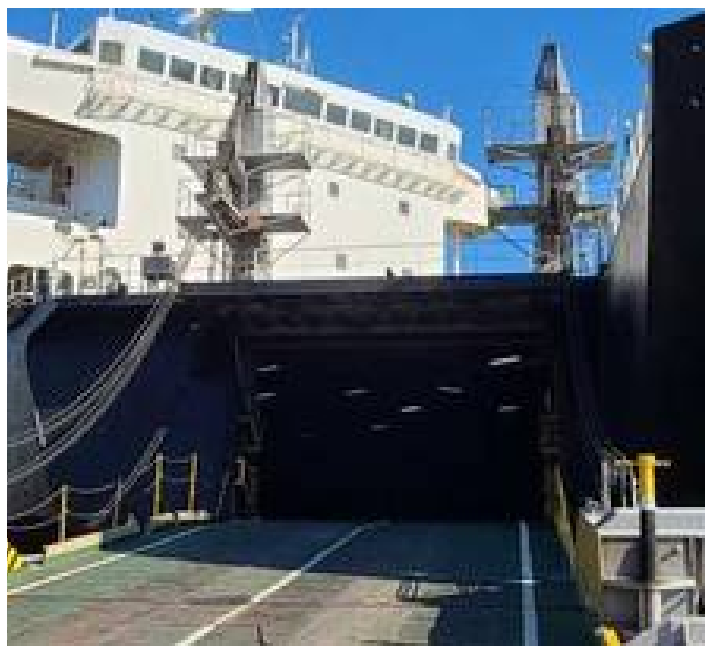
Aux. Engine: YANMAR 1000kva x2

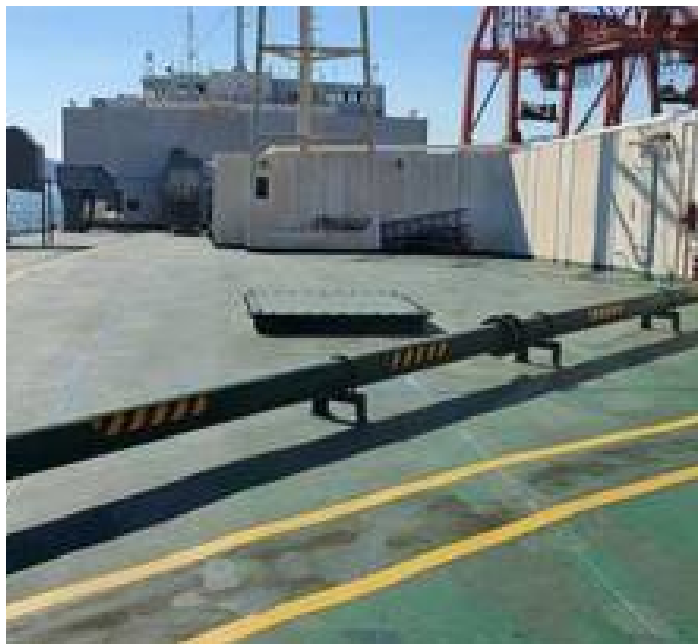
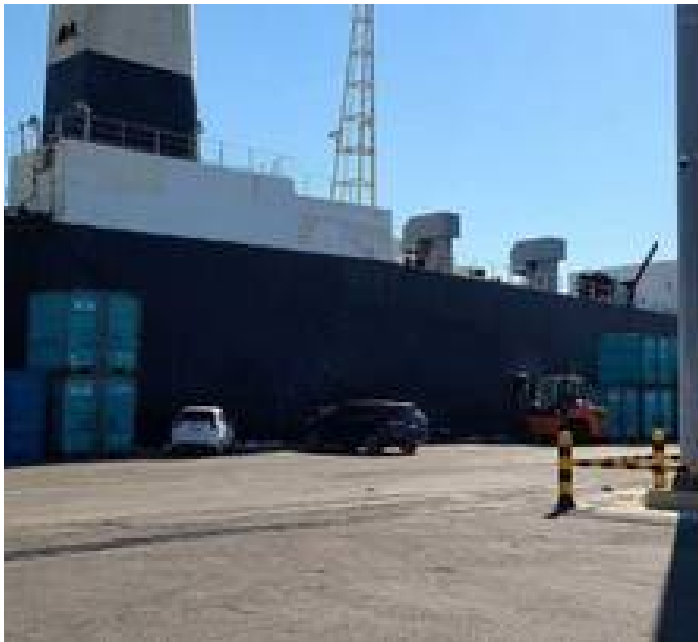
Car: Headless Chassis x15

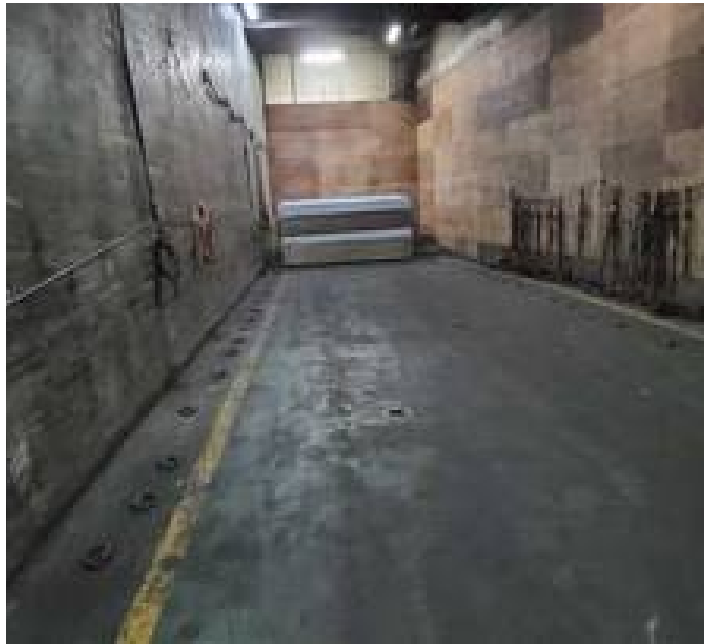
Cargo: Paper x4400tons

Speed: 19.7knots (trial), 17.0knots (service)
Ramp: Bow & Stern (Starboard, Quarter)
Thruster: Bow (837kw), Stern (765kw)
Delivery: Prompt

















The details of all vessels are offered in good faith but we cannot guarantee or warrant the accuracy of this information nor warrant the condition of the vessel. Any buyer should instruct their agents, or their surveyors, to investigate such details as the buyer desires validated. This vessel is offered subject to sale, price change, location or withdrawal without notice.



