



# SEABOATS

MARINE BROKERS WITH A GLOBAL APPROACH

AUSTRALIA - BULGARIA - INDIA - INDONESIA - ITALY - MALAYSIA - NEW ZEALAND - PANAMA - PHILIPPINES - SINGAPORE - SPAIN - UK - USA - VENEZUELA - VIETNAM

[sales@seaboats.net](mailto:sales@seaboats.net) - [www.seaboats.net](http://www.seaboats.net)

## 73.56m Cruise Vessel



### Listing ID - 4811

**Description** 73.56m Cruise Vessel

**Date** 1996

**Launched**

**Length** 73.56m (241ft)

**Beam** 14m (46ft)

**Draft** 3.6m (11ft 9in)

**Note** 156 (in 63 cabins), (24 crew cabins)

**Location** Nadi Bay, Fiji

**Broker** Peter Cookson  
[peter.cookson@seaboatsbrokers.com](mailto:peter.cookson@seaboatsbrokers.com)  
+61 429 543 180

**Price** POA

The vessel was built in Fiji Government Shipyard, Suva in 1996. She was designed for cruising in Fiji waters. Powered by 2xYanmar Z260A-ET, 6 cylinder diesel engines and 2 Yanmar diesel generators.

### Reef Endeavour Background Information 2024

Location - At anchor in Nadi Bay, Fiji

Availability - Immediate for inspection and purchase

Last docking - Dec 2022

Annodes replaced - Dec 2022

Next special survey - June 2024

Fuel economy - see spreadsheet

Stabilisers - no

SOLAS - no

Class - In survey under Fiji Flag, not in international class. She was built to Lloyds and taken out of class in 2012.

**Registry:** Suva, Fiji

**Builder:** Fiji Government Shipyard, Suva

**Built:** 1996

**Main Engines:** 2 x Yanmar Z260A-ET, 6-cylinder diesel engines

**Generators:** 2 x Yanmar FC-3-AA 4K602F4, 6-cylinder diesel engines

**Propulsion:** 2 multi bladed propellers

**Thruster:** Shottle Bow thruster 142kW

**Steering:** Single helm steering with port & st'd wing controls & twin rudders

**Hydraulics:** Steering rams, anchor winch, stern platform for Glass bottom boat, 2 x side loading dive boats, Dinel door system

**Pumps:** Bilge, fire, deck, fuel, oil, freshwater, hydraulic & sullage pumps

**Winches:** Anchor Winch & Cargo Crane

**Communication System:** Sailor RT2047 VHF transceiver radio, call sign VNRK 6 x ICOM, ICM32 Waterproof VHF transceiver radio, Codan 85285 transceiver radio, Barrett DSC2 Transceiver radio, Phone-tech satellite phone JRC NVA-410

**Tonnage:** 3125 tonnes

**Length:** 73.56 metres

**Beam:** 14 metres

**Draft:** 3.6 metres

**Fuel Storage:** 300 000 litres

**Water Storage:** 500 000 litres

**Sullage Storage:** 94 000 litres

**Speed:** 13.5 nots

**Passenger Cabins:** 63

**Passengers:** 156

**Crew Cabins:** 24

**Navigation System:** 1 x wheelhouse Tonimec steering compass. 1 x Azimuth compass on Sun/sports deck Furuno FR-1510DS radar. Furuno FR-2120 colour radar. Furuno GP-32 GPS Tonimec TP-20 autopilot. Simrad 1515 wind indicator.

**Hot Water:** Commercial System provided through engine room.

**Refrigeration:** 2 x walk in cool rooms on E Deck. Cool room, freezer & 2 icemakers on D Deck

**Air Conditioning:** Luke compression plant

**Compressors:** Commercial type Luke, Kirby, Puna, Bauer systems for Air-Conditioning, refrigeration & to provide air for divers

**Bulkheads:** Combination of stained timber, vinyl upholstered and painted panels.

**Deckheads:** Combination of acoustic, vinyl upholstered & painted panels

**Cabin Soles:** All weather Carpet, Pirelli style vinyl & polished timber for dance floor.

**Decks:** Outdoor carpet, Pirelli style vinyl & laid timber planking & nonskid paint

**Furniture:** Ratana Ratan furniture, built in polished timber.

**Tenders:** 1x40person Glass Bottom Boat, 2 x 19-person aluminium tenders, 1 x 10-person zodiac tender.

## **Accommodation**

63 Tabua Suites, Staterooms and Cabins each with private bathroom ensuite on/off air-conditioning and hair dryer.

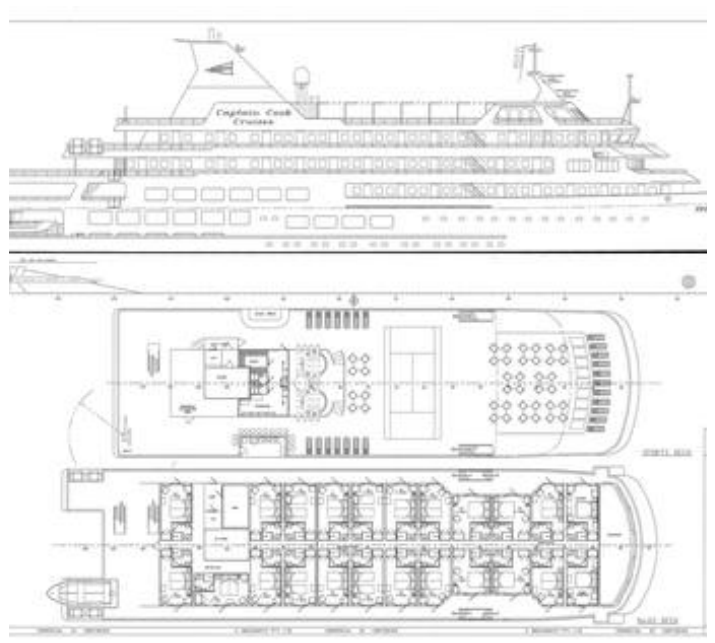
Tabua Suites have 2 ensuite, fridge, lounge and tea and coffee making. Each Stateroom and Cabin has a twin/convert double bed & approximately 14 sq metres. Tabua suites are approx. 28 sq metres. Tabua Suites and Staterooms open

onto outside walkways and have picture windows. Cabins open to an inside passageway and have port-holes facing the outside. 24 crew twin, triple and quad cabins, some with en-suite and most with 1 ensuite for 2 cabins (crew deck not shown)

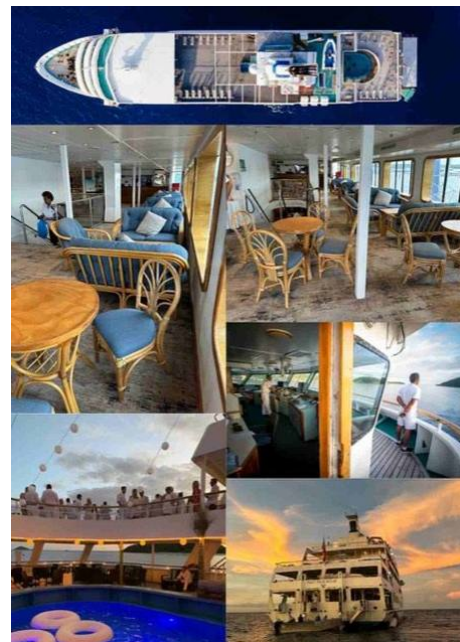
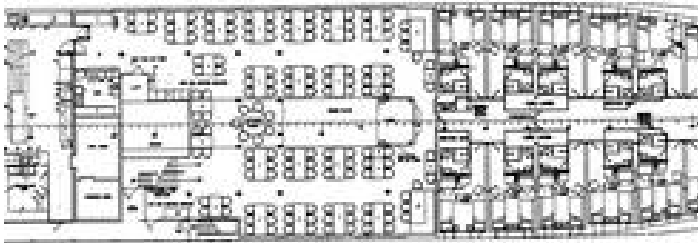
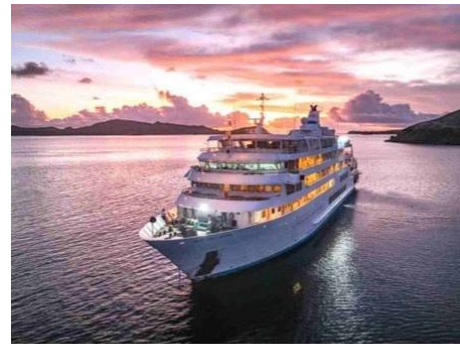
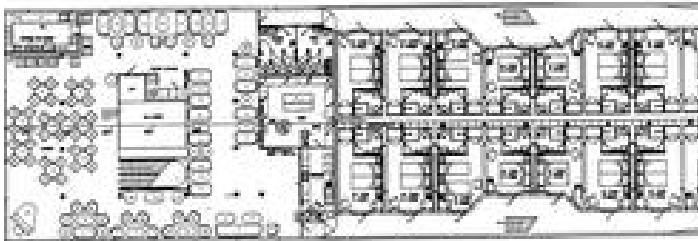
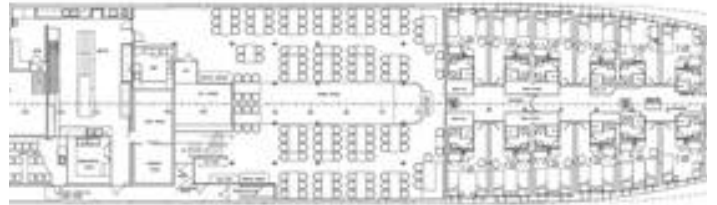
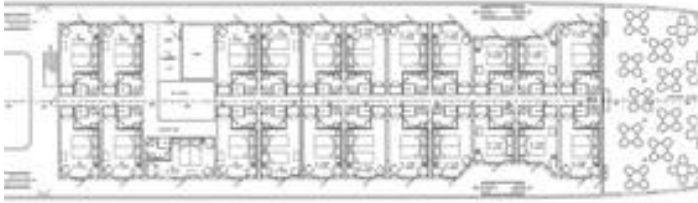
### Facilities

Fresh water swimming pool, spa pool on sun deck, sun deck, and mini gym, glass-bottomed boat, snorkeling and dive vessels, two bars, two crew mess, two lounges and single sitting dining saloon, gift shop, chart house, library with TV, 2 laundries (commercial and guest), lift from D Deck to sun deck, hydraulic platform on the stern of the ship for easy access. Commercial Galley and cool-rooms.

She is located at anchor off Nadi Bay in Fiji and easily reachable for inspections with immediate effect. Fiji's international airport of Nadi is 20 mins drive and we can arrange the short small boat ride out to the ship on request. Delivery can also be immediate if required as she is currently not operating.













The details of all vessels are offered in good faith but we cannot guarantee or warrant the accuracy of this information nor warrant the condition of the vessel. Any buyer should instruct their agents, or their surveyors, to investigate such details as the buyer desires validated. This vessel is offered subject to sale, price change, location or withdrawal without notice.



AUSTRALIA - BULGARIA - INDIA - INDONESIA - ITALY - MALAYSIA - NEW ZEALAND - PANAMA - PHILIPPINES - SINGAPORE - SPAIN - UK - USA - VENEZUELA - VIETNAM