



SEABOATS

MARINE BROKERS WITH A GLOBAL APPROACH

AUSTRALIA - BULGARIA - INDIA - INDONESIA - ITALY - MALAYSIA - NEW ZEALAND - PANAMA - PHILIPPINES - SINGAPORE - SPAIN - UK - USA - VENEZUELA - VIETNAM

sales@seaboats.net - www.seaboats.net

NEW BUILD - 17.7m Landing Craft



Listing ID - 4816

Description 17.7m Landing Craft

Date Launched Built to Order

Length 17.7m (58ft)

Beam 5.5m (18ft)

Draft 0.55m (1ft 9in)

Note Outboards Engine

Location Turkey

Broker Giuseppe Filippone
giuseppe.filippone@seaboatsbrokers.com
+39 329 886 8343

Price POA

Price Notes Delivery Upon Order :35 weeks

IZ 1770 AL LC aluminum landing craft was designed for delivering people as well as equipment (up to 8 tons) in all weather conditions. Thanks to the crane mounted on its deck, it can launch and take the boats on its deck. IZ 1770 AL LC was designed to sail in a variety of coastal areas and beaches without requiring any special docking facilities. This vessel offers very high safety standards and excellent stability. Of strong aluminum construction this LC Workboat can be fully customized to Owner's requirements.

Main characteristics

Length Overall : 17.70m

Beam: 5.50m

Draught: 0.55m

Material: AL. Hull + AL. Cabin

Seats: 1+5

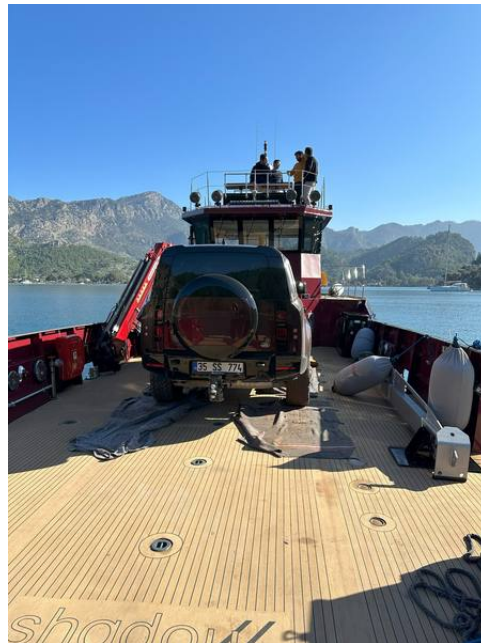
Propulsion: Outboard

Engine: 2 x 400 Hp

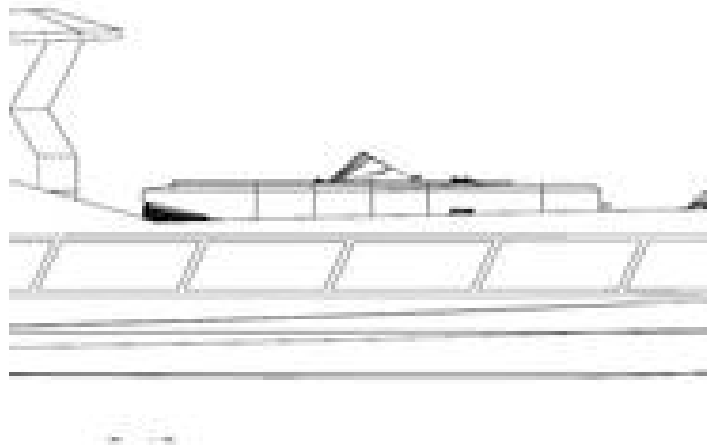
Speed: 24+ kts

Class Society: CE Category B

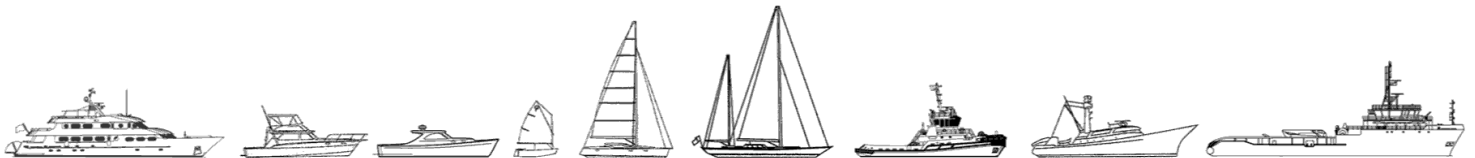
Delivery Upon Order :35 weeks







The details of all vessels are offered in good faith but we cannot guarantee or warrant the accuracy of this information nor warrant the condition of the vessel. Any buyer should instruct their agents, or their surveyors, to investigate such details as the buyer desires validated. This vessel is offered subject to sale, price change, location or withdrawal without notice.



AUSTRALIA - BULGARIA - INDIA - INDONESIA - ITALY - MALAYSIA - NEW ZEALAND - PANAMA - PHILIPPINES - SINGAPORE - SPAIN - UK - USA - VENEZUELA - VIETNAM