



SEABOATS

MARINE BROKERS WITH A GLOBAL APPROACH

AUSTRALIA - BULGARIA - INDIA - INDONESIA - ITALY - MALAYSIA - NEW ZEALAND - PANAMA - PHILIPPINES - SINGAPORE - SPAIN - UK - USA - VENEZUELA - VIETNAM

sales@seaboats.net - www.seaboats.net

New Build - 43.9m Motoryacht



Listing ID - 4862

Description New Build - 43.9m Motoryacht

Date Launched 2024, NEW

Length 43.9m (144 feet)

Beam 8.95m (29ft 4in)

Draft 2.7m (8ft 10in)

Note Engine: 2x Caterpillar C32 Acert

Location Hong Kong

Broker Reynaldo Gil
reynaldo.gil@seaboatsbrokers.com
+58 414 243 4966

Price \$19,500,000

GOLDEN ORCHID

BUILDER - KINGSHIP/CENTRAL YACHT YEAR DELIVERED - 2024

Unique and modern lines - a design statement

Golden Orchid is a global cooperation with Design from Horacio Bozzo, Engineering from Axis Yacht Group, Project Management from Central Yacht and assembly at the Kingship facility 1 hour from Hong Kong airport.

Golden Orchid has an exceptional specification and is being built to the highest North European standards and is classed RINA - C Maltese Cross HULL, MACH, Ych, Unrestricted Navigation, EFP MCA Large Yacht Code

The hull and superstructure are already complete allowing us to offer delivery at the end of 2024. Personalisation of the interior choice of fabrics, stones, veneers and loose furniture is still possible.

KEY FEATURES

Caterpillar C32 Acert 1450hp x 2
Kohler or Cat Generators 2 x 65kw
Long range - up to 5,500NM at 10 knots
High volume and Wide beam - 499GT / 8.95m (29'4" feet)
Very stable and comfortable - Quantum or equivalent zero-speed stabiliser
Steel hull, aluminium superstructure
Built to MCA commercial code
Shallow draft - 2.7m (8'10" feet)
Large sundeck - 93m² (1001 sq ft)
Sun deck spa pool and dining table

Overview

Length overall: 43.9m (144ft)
Beam: 8.95m (29ft 4in)
Draft: 2.7m (8ft 10in)
Gross Tonnage: 499 T

Construction

Builder: Kingship Marine
Year Build: 2024
Exterior: Horacio Bozzo
Interior Design: TBD

Performance

Cruising Speed: 13.5 knots (approx.)
Top Speed: 15 knots (approx)
Range: 5,500nm at 10 knots (approx.)

Accommodation

Guest Cabin

1 Master Suite
2 Double VIP Cabin
2 Twin Bed Cabins
Total 10 Guests

Crew Cabins

1 Captain Cabin x 2 berths
4 Crew Cabin x 2 berths
Total 10 Crew

Capacities

Fuel: 55,000L - 14,529USG
Water: 20,000L - 5,283USG

Machinery

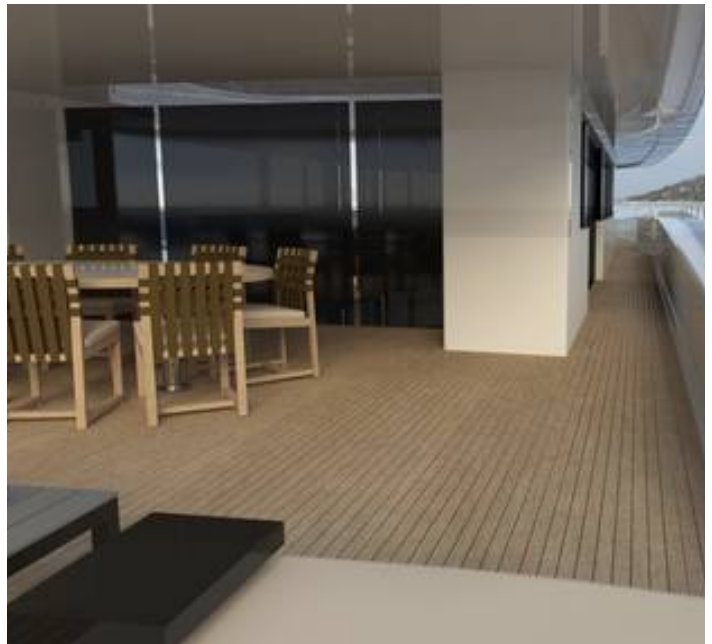
Main Engines: Caterpillar C32 Acert- 2x 1,450HP - 1,080kW
Generators: Kohler or Caterpillar - 2x 230V / 400V 3 phase, 50hz, 65kW
Stabilisers: Quantum or equivalent
Tenders: Provisional space for 1x 7m tender, 1x 4m rescue boat and 2x jetski

Classification

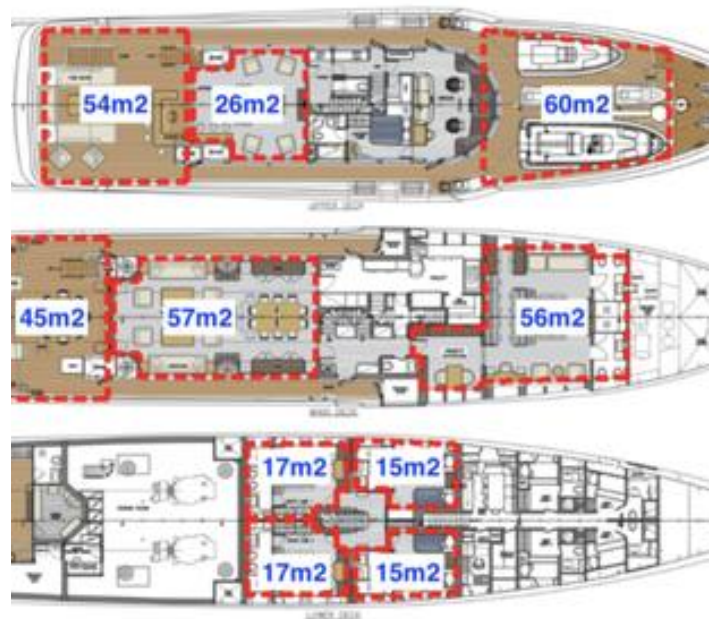
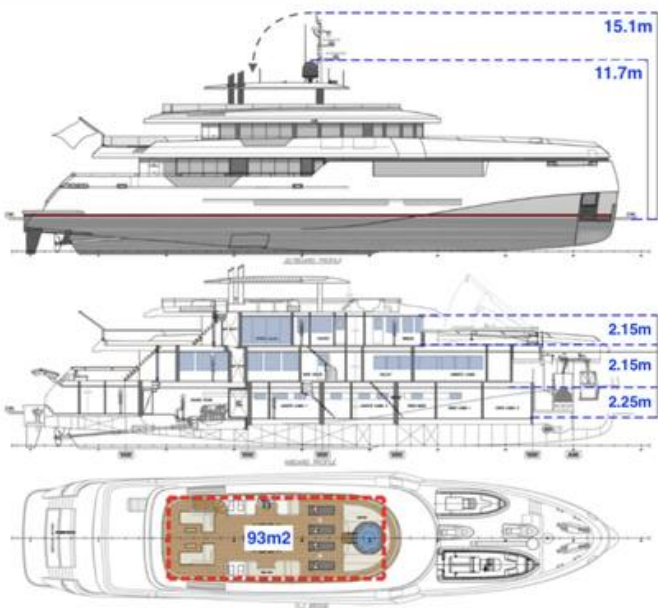
MCA: Large Yacht Code

Flag: Cayman Islands

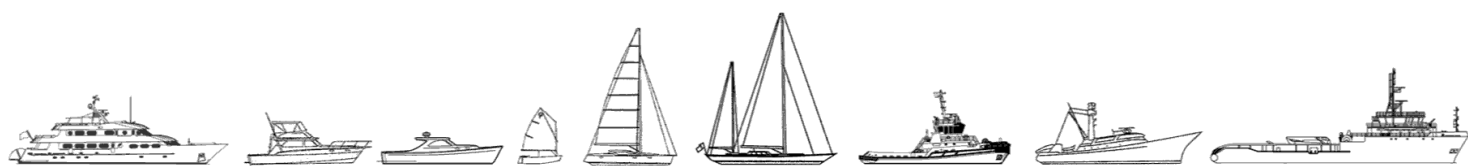
Class Society: RINA – C Hull Mach, Ych, Unrestricted Navigation, EFP







The details of all vessels are offered in good faith but we cannot guarantee or warrant the accuracy of this information nor warrant the condition of the vessel. Any buyer should instruct their agents, or their surveyors, to investigate such details as the buyer desires validated. This vessel is offered subject to sale, price change, location or withdrawal without notice.



AUSTRALIA - BULGARIA - INDIA - INDONESIA - ITALY - MALAYSIA - NEW ZEALAND - PANAMA - PHILIPPINES - SINGAPORE - SPAIN - UK - USA - VENEZUELA - VIETNAM