



SEABOATS

MARINE BROKERS WITH A GLOBAL APPROACH

AUSTRALIA - BULGARIA - INDIA - INDONESIA - ITALY - MALAYSIA - NEW ZEALAND - PANAMA - PHILIPPINES - SINGAPORE - SPAIN - UK - USA - VENEZUELA - VIETNAM

sales@seaboats.net - www.seaboats.net

NEW BUILD - 87m PSV



Listing ID - 493142

Description	New Build - 87m PSV
Date Launched	Available for prompt delivery.
Length	87.075m
Beam	18.80m
Draft	7.40m
Location	China
Broker	Geoff Fraser geoff.fraser@seaboats.net +64 21 61 222 5

General

Design: MMC 887

Class ABS: +A1, (E) Offshore Support Vessel, ACCU, +AMS, +DPS-2, +FFV Class 1,

Flag: St. Vincent and the Grenadines

Owner: Marine Assets Corporation

Yard: Mawei Shipbuilding Ltd., China

Yard Built No.: MW619/41,42

Delivery date: 2013.3.31/2013.4.30

Main Particulars

LOA: 87.075m

Length bet pp: 83.00m

Breadth moulded: 18.80m

Depth Main Deck: 7.40m

Max Summer Draft: 6.05m

Cargo Deck Area: 1000m²
Deck Cargo: 2480mt approx
Deadweight at 6.05m: 5145mt
Gross Tonnage: 3671

Performance

Speed at 5.0m: 14.3knots
Fuel Consumption: Max transit speed: 14.3knots
Draft 5.0m: 24.0mt/24h
Service speed: 12.0knots; draft 5.0m: 15.7mt/24h
DP-2 off loading 3 cargos: 16.5mt/24h

Machinery System

Main Engines: 4x Cummins QSK60-D(M), 4x1900kW; 4x2 547hp
Emergency/Harbour engine: 1xCummins, 435kW, 570hp
Bow thruster: 1x Rolls Royce
TT1850 DPN CP 1x910kW; 1x1 072hp
Stern Thruster: 2x Rolls Royce
255P30 FP: 2x2000kW; 2x2 680hp

Generators

Main generators: Water cooled 4x ABB; 4x2 282kVA
Emergency Generator: Air cooled 1xABB; 1 x 481kVA

Pumps with Discharge Rate

Fuel oil cargo transfer: 1x DESMI pump off 150/20m³/h 9 bar, electric driven
Ballast Water/Drill Water: 1x DESMI pump off 150/80m³/h 9 bar, electric driven
Fresh Water: 1x DESMI pump off 150/80m³/h 9 bar, electric driven
Liquid Mud: 4x P.G. pump off 150m³/h 14 bar, electric driven
Mud Cleaning System: Butterworth for 8 off liquid mud tanks
Dry Bulk: 2x INGERSOLL-RAND compressors off 1100m³/h 5.6 bar, electric driven
Bilge: 1x DESMI pump off 65m³/h 2.5bar electric driven
Methanol pump: HAMWORTHY DW 100/100-4K Cbm 0.57/h 1.13MPa
Fifi Pumps: FFV Class 1, 2xFFS pumps 1600m³/h

Cargo Systems

Dry Bulk: 5x “p” tanks; 5x80.14m³
Maker: Van Aalst: 2x INGERSOLL-RAND air compressors, 1200m³/h, 7.0 bar, electric driven, 2x dryers

Deck Machinery

Provision Crane SB side: 1x provision, straight arm deck crane – 2mt at 10m, Maker Zhenijang West, China
Tugger Winches: 2x10mt; electric driven, maker South Chia

Anchoring and Mooring Equipment

Windlass: 2x combined windlass / mooring winch; electric driven, maker South China
Capstan: 2x capstan aft; 7.5mt pull; electric driven, maker South China

Accommodation

Number of persons: 52

16 x one man cabins

10 x two men cabins

4 x four men cabins

1 x Dispensary

1 x Office

Rescue Equipment

MOB: 1x SOLAS type MOB for 6 persons made from GRP

Speed: 6 knots

Davit: Single arm rescue boat crane

SWL: 15kN

Dynamic Position System

DP – 2 (Kongdberg)

3 x Wind Sensor

3 x MRU

3 x Gyrocompass

2 x DGPS

2 x Radius System

2 x Independent Joystic

Interface for future HiPAP installation

Follow Target Mode (R.O.V. mode)

2 x Portable Joystic

Navigation / Communication Equipment

Radar: 1 x Furuno ARPA S-band; 1x Furuno ARPA X-band

Satellite: 1x INMARSAT C

Gyro: 3x Gyrocompasses (combined use with DP-system)

Other Equipment

1x GPS for Navigation

1x Complete GMDSS A3 Radio Installation

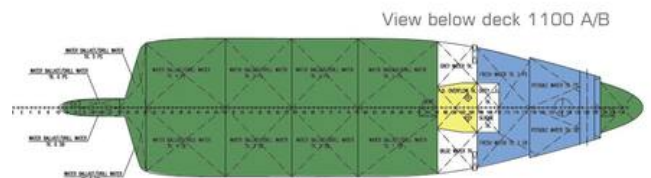
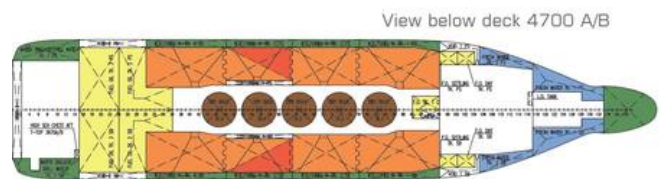
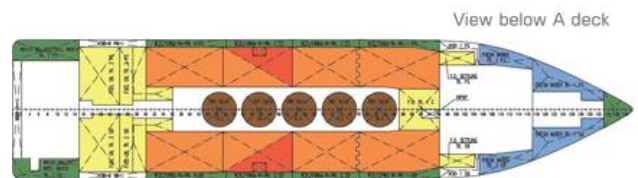
1x AIS Automatic Identification System

1 x VDR (Voyage Data Recorder)

1 x SSAS Distress Alarm (combine with Inmarsat-C) Maker Furuno



004.jpg



WATER BALLAST / DRILL WATER (99%)			
Tanks	SPG. (t/m³)	Capacity (m³)	Capacity (t)
FORE PEAK	1.025	189.00	193.73
TK. 1 PS	1.025	163.90	167.90
TK. 1 SB	1.025	163.90	167.90
TK. 2 PS	1.025	136.80	140.22
TK. 2 SB	1.025	136.80	140.22
TK. 3 PS	1.025	139.70	143.19
TK. 3 SB	1.025	140.90	144.42
TK. 4 PS	1.025	152.70	156.00
TK. 4 SB	1.025	152.70	156.00
TK. 5 PS	1.025	42.74	43.81
TK. 5 SB	1.025	42.74	43.81
TK. 6 PS	1.025	57.81	59.26
TK. 6 SB	1.025	57.81	59.26
TK. 7 PS	1.025	84.57	86.68
TK. 7 SB	1.025	78.59	80.54
TOTAL		1739.45	1782.94

LIQUID MUD (100%)			
Tanks	SPG. (t/m³)	Capacity (m³)	Capacity (t)
TK. 1 PS	2.400	360.60	865.44
TK. 1 SB	2.400	360.60	865.44
TK. 2 PS	2.400	299.10	693.84
TK. 2 SB	2.400	299.10	693.84
TK. 3 PS	2.400	342.20	821.28
TK. 3 SB	2.400	342.20	821.28
TOTAL		1984.22	4761.12

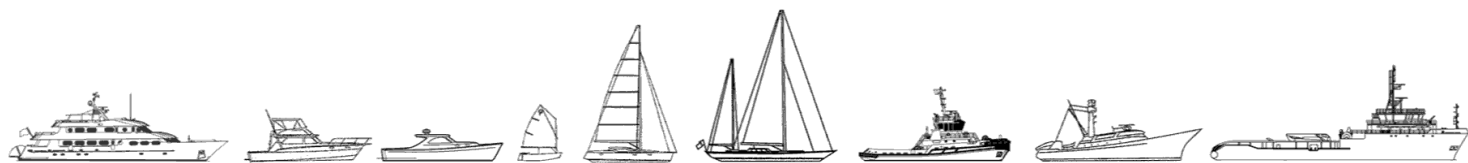
LIQUID MUD METHANOL (100%)			
Tanks	SPG. (t/m³)	Capacity (m³)	Capacity (t)
TK. 1 PS	2.400	215.10	516.24
TK. 1 SB	2.400	215.10	516.24
TOTAL		430.20	1032.48

POTABLE WATER (99%)			
Tanks	SPG. (t/m³)	Capacity (m³)	Capacity (t)
TK. PS	1.000	83.40	83.40
TK. SB	1.000	83.40	83.40
TOTAL		166.80	166.80

FRESH WATER (99%)			
Tanks	SPG. (t/m³)	Capacity (m³)	Capacity (t)
TK. 1 PS	1.000	126.40	126.40
TK. 1 SB	1.000	126.40	126.40
TK. 2 PS	1.000	39.99	39.99
TK. 2 SB	1.000	39.99	39.99
TK. 3 PS	1.000	80.70	80.70
TK. 3 SB	1.000	80.70	80.70
TOTAL		494.18	494.18

FUEL OIL (98%)			
Tanks	SPG. (t/m³)	Capacity (m³)	Capacity (t)
DAY TK. PS	0.87	15.24	13.26
DAY TK. SB	0.87	15.24	13.26
SETTLING TK. PS	0.87	38.10	33.15
SETTLING TK. SB	0.87	38.10	33.15
TK. 1 C	0.87	100.30	87.26
TK. 2 PS	0.87	182.60	158.86
TK. 2 SB	0.87	182.60	158.86
TK. 3 PS	0.87	183.80	159.90
TK. 3 SB	0.87	183.80	159.90
TOTAL		939.78	817.60

The details of all vessels are offered in good faith but we cannot guarantee or warrant the accuracy of this information nor warrant the condition of the vessel. Any buyer should instruct their agents, or their surveyors, to investigate such details as the buyer desires validated. This vessel is offered subject to sale, price change, location or withdrawal without notice.



AUSTRALIA - BULGARIA - INDIA - INDONESIA - ITALY - MALAYSIA - NEW ZEALAND - PANAMA - PHILIPPINES - SINGAPORE - SPAIN - UK - USA - VENEZUELA - VIETNAM